



LABOR SITUATION

Office of Research

FOR IMMEDIATE RELEASE

April 2011 Data

CT Unemployment Rate = 9.1%

National Unemployment Rate = 9.0%

State Adds 7,900 Jobs; Unemployment Rate Remains at 9.1 Percent

WETHERSFIELD, May 19, 2011 – After a loss of more than 6,500 jobs in March, Connecticut’s workforce experienced another turnaround in April with 7,900 additional jobs estimated for the month. This brings the state’s nonfarm employment to 1,625,100. On a seasonally adjusted basis, this represents an increase of 19,300 jobs over the year, when nonfarm employment totaled 1,605,800. The state’s unemployment rate remained steady at 9.1 percent, which is slightly above the national rate of 9.0 percent.

“While it has definitely been an uphill battle regarding job gains, the small victories are slowly beginning to help us regain the nearly 120,000 jobs lost during the recession,” noted Labor Statistics Supervisor Salvatore DiPillo. “Although Connecticut has only seen gains in six of the last 12 months, we have still managed to add more than 31,000 jobs since the job market turned around in January 2010. Unfortunately our unemployment rate remains persistently high at 9.1 percent, which is above the national average. Still, trends in the past year - fewer new claims for unemployment, increased workweek hours, and a decline in the number of unemployed people - are encouraging signs for the future.”

Nonfarm Employment

There were job gains in most industry sectors in April. Among the largest gains were those in the **education and health services** sector, which added 3,800 jobs, the **trade, transportation and utilities** sector which added 3,700, and the **leisure and hospitality** sector with 2,200 additional jobs. Employment in the **government** sector was down 2,200, while **construction** and **financial activities** sectors each posted 1,100 fewer jobs. The **information** sector was mostly unchanged over the month. Over the year, all but four of the major industry sectors added jobs.

Overall, as the national and state economies recover, volatility in monthly numbers can be expected. Additionally, changes in methodology that culminated in March 2011 with the U.S. Department of Labor, Bureau of Labor Statistics assuming complete responsibility for estimating all states’ monthly nonfarm job counts, are expected to contribute to the month-to-month variability in the numbers. Jobs estimates are best understood in the context of their movement over several months rather than observed changes in a single month’s estimate.

Among those sectors that have added employment over the year is the **educational and health services** sector. This sector showed resilience during the recession and continues to add jobs. Since last April **educational and health services** has added 9,200 positions, and now totals 315,200. Gains in the **healthcare and social assistance** industries over the year numbered 7,500, while **education services** added 1,700 jobs.

The **professional and business services**, which after losing nearly 11 percent of its employment between the beginning of 2008 and the fall of 2009, has been steadily adding jobs in most months. Over the past year, the sector has added 5,600 jobs to now total 196,200. Most of these additional positions are in the **employment services** industry, including **temporary help agencies**.

Over the past year the **leisure and hospitality** sector added 1,200 jobs, with employment now at 135,300. There have been gains in both of this sector’s component industries – **arts, entertainment and recreation** and **accommodations and food services**. This sector continues to rebound from the recession fairly well in Connecticut.

The **manufacturing** sector experienced some growth throughout much of 2010 after years of a long and steady decline. This sector has added 1,700 jobs since April 2010, and now employs 167,100 workers. Over-the-year gains were seen in both the **durable goods** and **nondurable goods** industries that comprise the **manufacturing** sector.

The **construction** sector, which began losing jobs in July of 2007, lost 20,500, or 30 percent of its jobs between that time and December 2010. March and April's losses followed a busier than usual winter due to repair work caused by this winter's storms. The **construction** sector's employment is down 400 jobs over the year, now totaling 49,800.

Employment in the **financial activities** sector peaked in January 2007, and lost 11,000 jobs before starting to show some gains in the summer of 2010. However with losses in March and April of this year, employment in **financial activities** – now at 134,500 – is down by 200 from April of last year.

The **other services** sector, which includes **repair and maintenance services, personal and laundry services** and **religious, grantmaking, civic, and professional organizations**, saw its employment peak in December 2006 and lost 6.8 percent of its jobs before turning around in February 2010. In the past year this sector has added 600 jobs to now total 61,000.

The **government** sector's employment had a temporary boost in 2010 with the hiring of several thousand federal Census workers, but their work was mostly done by the fall months. The number of **federal** employees, at 17,900 in April, was down 1,800 from April 2010 – to some extent the result of post office staff reductions, but also the result of the large number of temporary Census workers hired last year. Employment in **state government**, at 68,100, is up 1,700 from April 2010, while **local government** (which includes **tribal governments** and their **gaming establishments**) dropped 1,700 jobs over the year. Employment in **local government** peaked in May 2008, and since then is down 7,500 to total 156,000 jobs.

The **trade, transportation and utilities** sector lost 27,500 positions, or 8.7 percent of its employment, between January 2008 and February 2010. The sector added jobs in much of 2010 and added 4,500 since the beginning of 2011. Employment in this sector now totals 292,000 with the sector's growth over the past year occurring in **wholesale** and **retail trade**, as well as the **transportation and utilities** industries.

The **information** sector, which includes **publishing industries** including **newspapers**, began losing jobs in 2000 – well before the current recession began. In the past year losses have moderated, and with 31,500 jobs in April, this sector is down just 200 positions from a year earlier.

Labor Market Areas (LMAs): Since January of 2010 when the state overall began adding jobs, there were gains in the Hartford LMA (+12,800), Bridgeport-Stamford LMA (+8,800), Danbury LMA (+1,300), New Haven LMA (+2,200) and the Waterbury LMA (+1,700). Job losses were reported in the Norwich-New London LMA (-1,800).

Hours and Earnings: The workweek for employees in the private sector, not seasonally adjusted, averaged 33.8 hours in April, up 0.5 hours from the April 2010 figure of 33.3 hours. Average hourly earnings at \$28.24, not seasonally adjusted, were up \$0.19 from a year ago at this time when the number was \$28.43. This resulted in an average weekly wage for private sector employees of \$954.51, up \$7.79 over the year, representing an increase of 0.8 percent. Information for the manufacturing production workweek and earnings can be found in the table section of this release under the "Hours and Earnings" data category.

Labor Force Data

Connecticut's seasonally adjusted labor force numbered 1,898,500 in April 2011, with 700 more employed people and 1,600 fewer unemployed people than there were in April 2010.

Unemployment: Based on the household survey, the estimate of people unemployed, seasonally adjusted, was up

300 from March at 172,300, and the unemployment rate remained at 9.1 percent. This is one-tenth of a percentage point more than the national rate of 9.0 percent. Compared to the state's unemployment rate of 9.2 percent in April 2010, this month's rate represents a decrease of 0.1 percentage point over the year. Average weekly initial unemployment claims in April 2011 for first-time filers increased over the month by 338 to 5,262 and were down 1.7 percent, or 89 claims from this time last year.

Release of April 2011 labor force data for the labor market areas, cities and towns is restricted by the U.S. Bureau of Labor Statistics until tomorrow, May 20. These data will be available on our website tomorrow at: <http://www1.ctdol.state.ct.us/lmi/LAUS/default.asp>. An updated **Connecticut Labor Situation** publication including this data will be available at: <http://www1.ctdol.state.ct.us/lmi/laborsit.pdf>.

The nonfarm employment estimate, derived from a survey of businesses, is a measure of jobs in the state; the unemployment rate, based on a household survey, is a measure of the work status of people who live in Connecticut.

Contact: Communications Office

(860) 263-6535

5-19-11

Labor market information is available on the Internet at www.ctdol.state.ct.us/lmi
200 Folly Brook Boulevard, Wethersfield, CT 06109-1114 - www.ct.gov/dol
An Equal Opportunity/Affirmative Action Employer

NONFARM EMPLOYMENT

Jobs - by Place of Work

CONNECTICUT AND THE UNITED STATES - Seasonally Adjusted

	Apr. 2011 P	Mar. 2011 R	Feb. 2011	Jan 2011	Apr. 2010	Over Month Change	Rate	Over Year Change	Rate
CONNECTICUT	1,625,100	1,617,200	1,623,800	1,617,800	1,605,800	7,900	0.5%	19,300	1.2%
Goods Producing Industries									
Construction	49,800	50,900	52,600	50,600	50,200	-1,100	-2.2%	-400	-0.8%
Manufacturing	167,100	166,200	166,300	167,200	165,400	900	0.5%	1,700	1.0%
Durable Goods	128,300	127,600	127,500	128,200	127,100	700	0.5%	1,200	0.9%
Nondurable Goods	38,800	38,600	38,800	39,000	38,300	200	0.5%	500	1.3%
Service Providing Industries									
Trade, Transportation & Utilities	292,000	288,300	287,700	287,500	288,300	3,700	1.3%	3,700	1.3%
Wholesale	63,800	63,400	63,000	62,400	62,600	400	0.6%	1,200	1.9%
Retail	179,700	176,900	176,900	177,200	177,700	2,800	1.6%	2,000	1.1%
Transp, Warehousing & Utilities	48,500	48,000	47,800	47,900	48,000	500	1.0%	500	1.0%
Information	31,500	31,400	31,600	31,700	31,700	100	0.3%	-200	-0.6%
Financial Activities	134,500	135,600	136,200	136,200	134,700	-1,100	-0.8%	-200	-0.1%
Finance & Insurance	115,400	116,500	116,900	116,800	115,700	-1,100	-0.9%	-300	-0.3%
Real Estate, Rental & Leasing	19,100	19,100	19,300	19,400	19,000	0	0.0%	100	0.5%
Professional & Business Services	196,200	195,300	199,300	195,800	190,600	900	0.5%	5,600	2.9%
Prof, Scientific & Tech Services	88,000	88,200	87,900	86,600	85,800	-200	-0.2%	2,200	2.6%
Management of Companies	25,700	26,000	26,000	26,000	26,100	-300	-1.2%	-400	-1.5%
Admn & Support & Waste Mgt Serv	82,500	81,100	85,400	83,200	78,700	1,400	1.7%	3,800	4.8%
Educational & Health Services	315,200	311,400	311,900	311,000	306,000	3,800	1.2%	9,200	3.0%
Educational Services	60,600	59,600	58,700	58,400	58,900	1,000	1.7%	1,700	2.9%
Health Care & Social Assistance	254,600	251,800	253,200	252,600	247,100	2,800	1.1%	7,500	3.0%
Leisure and Hospitality	135,300	133,100	133,600	133,700	134,100	2,200	1.7%	1,200	0.9%
Arts, Entertainment & Recreation	24,100	24,000	23,900	23,800	23,900	100	0.4%	200	0.8%
Accommodation & Food Services	111,200	109,100	109,700	109,900	110,200	2,100	1.9%	1,000	0.9%
Other Services	61,000	60,400	60,700	60,700	60,400	600	1.0%	600	1.0%
Government**	242,000	244,200	243,500	242,900	243,800	-2,200	-0.9%	-1,800	-0.7%
UNITED STATES	131,028,000	130,784,000	130,563,000	130,328,000	129,715,000	244,000	0.2%	1,313,000	1.0%

LABOR MARKET AREAS (LMA)

Labor Market Area employment estimates are made independently of Statewide estimates.

	Apr. 2011 P	Mar. 2011 R	Feb. 2011	Jan 2011	Apr. 2010	Over Month Change	Rate	Over Year Change	Rate
<i>Seasonally Adjusted data</i>									
Bridgeport-Stamford	401,400	399,100	400,700	399,700	394,700	2,300	0.6%	6,700	1.7%
Danbury	65,200	65,300	66,500	65,800	64,800	-100	-0.2%	400	0.6%
Hartford	541,200	538,200	538,000	534,800	532,200	3,000	0.6%	9,000	1.7%
New Haven	265,100	261,900	262,900	265,600	264,000	3,200	1.2%	1,100	0.4%
Norwich-New London	128,100	127,100	128,100	128,600	129,900	1,000	0.8%	-1,800	-1.4%
Waterbury	63,100	62,200	62,200	62,100	62,100	900	1.4%	1,000	1.6%
<i>Not Seasonally Adjusted data</i>									
Enfield	44,700	44,100	44,000	44,200	44,500	600	1.4%	200	0.4%
Torrington	34,600	34,400	33,700	33,900	34,200	200	0.6%	400	1.2%
Willimantic-Danielson	35,200	35,000	35,000	35,300	35,200	200	0.6%	0	0.0%

* Less than 0.05% ** Includes Native American tribal government employment

P = Preliminary

R = Revised

Starting with March, 2011, our monthly statewide and major LMA nonfarm job estimates have been taken over by the US Department of Labor Bureau of Labor Statistics. This is the final phase of transition in this program, which began in 2008. As a result of changes in the estimation procedures, you are likely to see more variability in month-to-month estimates of job counts. Caution should be used in interpreting any single month's estimate. The data are best interpreted to identify trends and cycles over several months and quarters. If you have any questions about these changes, please email us at: dol.lmi@ct.gov.

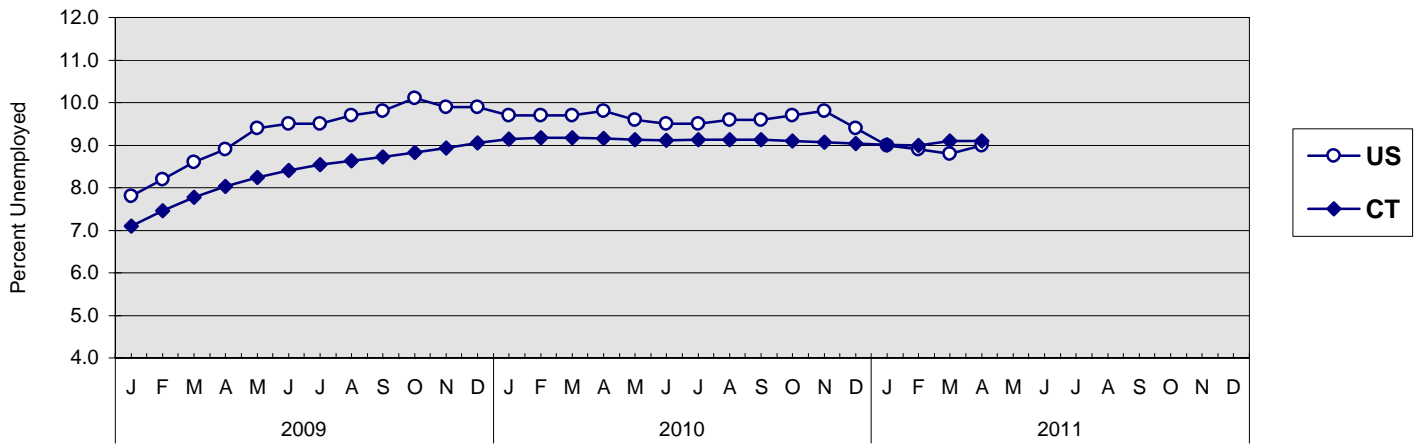
UNEMPLOYMENT

Persons Unemployed - by Place of Residence

CONNECTICUT AND THE UNITED STATES - Seasonally Adjusted

	April 2011 P		April 2010		Change		March 2011 R	
	Number	Rate	Number	Rate	Number	Points	Number	Rate
CONNECTICUT								
Unemployed	172,300	9.1	173,900	9.2	-1,600	-0.1	172,000	9.1
Labor Force	1,898,500		1,899,400		-900		1,898,200	
UNITED STATES								
Unemployed	13,747,000	9.0	15,138,000	9.8	-1,391,000	-0.8	13,542,000	8.8
Labor Force	153,421,000		154,520,000		-1,099,000		153,406,000	

U.S. AND CONNECTICUT UNEMPLOYMENT RATES - Seasonally Adjusted 2009 - 2011



LABOR MARKET AREAS - Not Seasonally Adjusted

	April 2011 P		April 2010		Change		March 2011 R	
	Number	Rate	Number	Rate	Number	Points	Number	Rate
Bridgeport-Stamford	39,600	8.3	39,400	8.3	200	0.0	41,500	8.7
Danbury	6,600	7.3	6,600	7.3	0	0.0	7,000	7.7
Enfield	4,600	9.0	4,600	9.1	0	-0.1	4,100	8.2
Hartford	53,300	8.9	53,400	8.9	-100	0.0	56,100	9.3
New Haven	29,400	9.3	28,500	9.0	900	0.3	30,300	9.6
Norwich-New London	13,200	8.8	13,300	8.7	-100	0.1	13,800	9.2
Torrington	4,700	8.8	4,900	9.0	-200	-0.2	5,200	9.5
Waterbury	12,100	11.9	12,300	12.0	-200	-0.1	12,500	12.3
Willimantic-Danielson	5,900	10.2	6,000	10.2	-100	0.0	6,000	10.3
CONNECTICUT	168,300	8.9	167,700	8.9	600	0.0	175,100	9.3
UNITED STATES	13,237,000	8.7	14,609,000	9.5	-1,372,000	-0.8	14,060,000	9.2

P = Preliminary

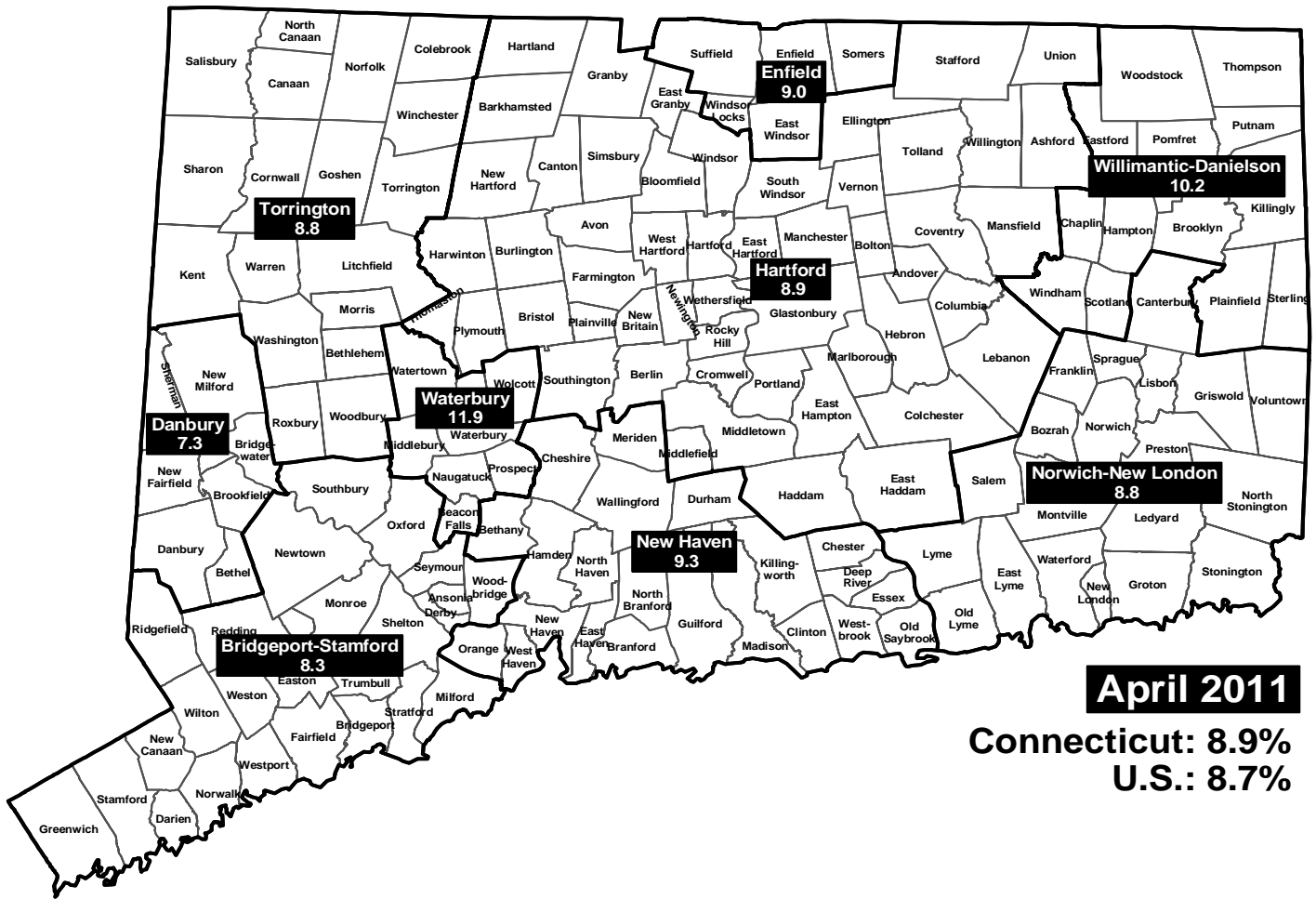
R = Revised

Labor force data included in this publication are developed in cooperation with the U.S. Department of Labor, Bureau of Labor Statistics.

UNEMPLOYMENT RATES

Not Seasonally Adjusted

LABOR MARKET AREAS



HOURS AND EARNINGS

CONNECTICUT Statewide - Not Seasonally Adjusted

	Average Weekly Earnings				Average Weekly Hours				Average Hourly Earnings			
	Apr. 2011 P	Apr. 2010	Change over Yr.	Mar. 2011 R	Apr. 2011 P	Apr. 2010	Change over Yr.	Mar. 2011 R	Apr. 2011 P	Apr. 2010	Change over Yr.	Mar. 2011 R
Private Industry All Employees	\$954.51	\$946.72	\$7.79	\$953.37	33.8	33.3	0.5	33.7	\$28.24	\$28.43	-\$0.19	\$28.29
Manufacturing Production Workers	\$1,003.23	\$960.07	\$43.16	\$1,019.69	40.6	41.4	-0.8	41.1	\$24.71	\$23.19	\$1.52	\$24.81

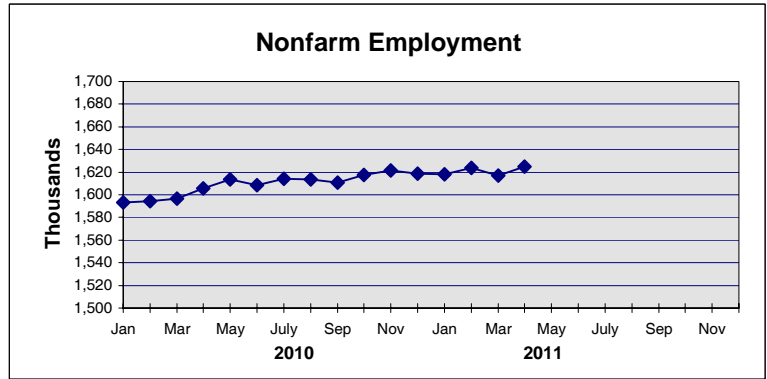
P = Preliminary R = Revised

Hours and earnings are also developed for the state's major industry sectors and Labor Market Areas. They can be found on our website at: www.ctdol.state.ct.us/lmi.

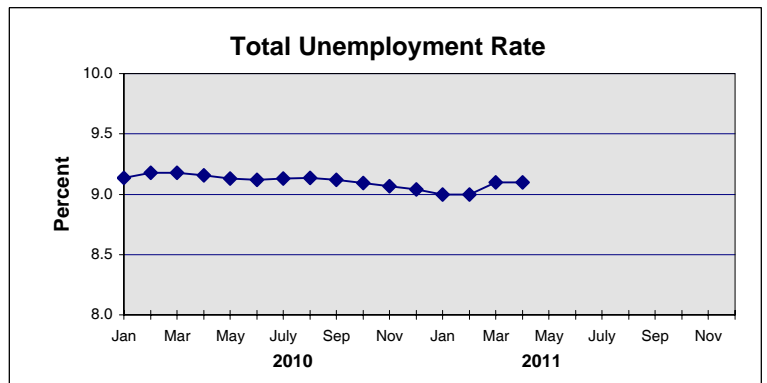
TRENDS

Seasonally Adjusted

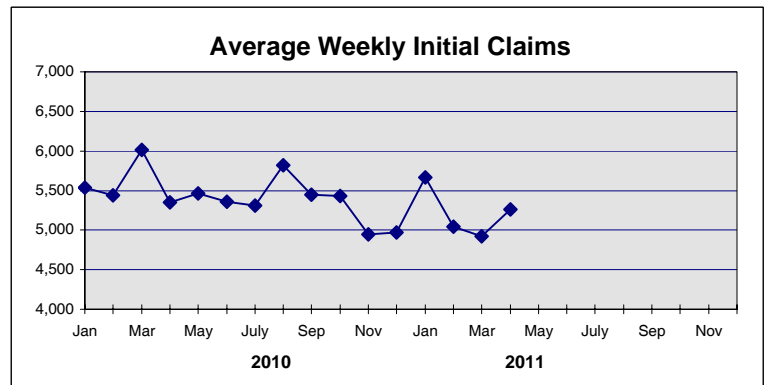
	Nonfarm Employment (000s)	Total Unemployment Rate
2010		
Jan	1,593.5	9.1
Feb	1,594.3	9.2
Mar	1,596.7	9.2
Apr	1,605.8	9.2
May	1,613.3	9.1
Jun	1,608.2	9.1
July	1,614.4	9.1
Aug	1,613.3	9.1
Sep	1,610.5	9.1
Oct	1,617.5	9.1
Nov	1,621.2	9.1
Dec	1,618.8	9.0



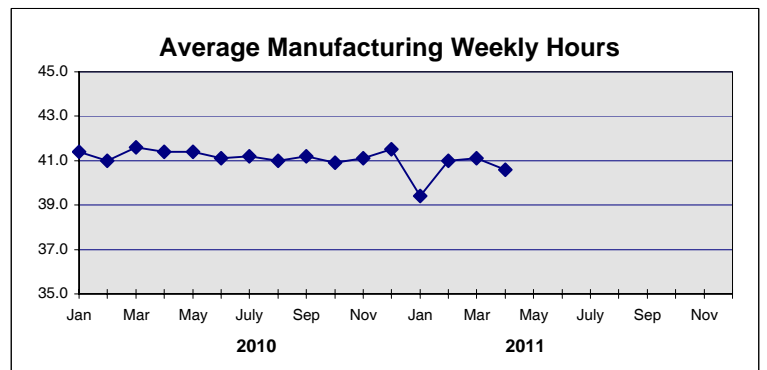
2011		
Jan	1,617.8	9.0
Feb	1,623.8	9.0
Mar	1,617.2 R	9.1 R
Apr	1,625.1 P	9.1 P
May		
Jun		
July		
Aug		
Sep		
Oct		
Nov		
Dec		



	Avg Weekly Initial Claims	Avg Manufacturing Weekly Hours*
2010		
Jan	5,539	41.4
Feb	5,443	41.0
Mar	6,011	41.6
Apr	5,351	41.4
May	5,467	41.4
Jun	5,357	41.1
July	5,313	41.2
Aug	5,821	41.0
Sep	5,450	41.2
Oct	5,432	40.9
Nov	4,948	41.1
Dec	4,972	41.5



2011		
Jan	5,665	39.4
Feb	5,046	41.0
Mar	4,924 R	41.1 R
Apr	5,262 P	40.6 P
May		
Jun		
July		
Aug		
Sep		
Oct		
Nov		
Dec		



* Not seasonally adjusted

P = Preliminary

R = Revised

** Labor-management dispute