



LABOR SITUATION

Office of Research
Scott D. Jackson, Commissioner

FOR IMMEDIATE RELEASE

November 2017 Data
CT Unemployment Rate = 4.6%
US Unemployment Rate = 4.1%

Nonfarm jobs decline 3,500 in November; unemployment rate at 4.6%

WETHERSFIELD, December 21, 2017 – Preliminary Connecticut nonfarm job estimates from the business payroll survey administered by the US Bureau of Labor Statistics (BLS) show the state lost 3,500 net jobs (-0.2%) in November 2017, to a level of 1,677,500, seasonally adjusted. Over the year, nonagricultural employment in the state fell by 700 jobs (-0.04%). October's originally-released job loss of 6,600 was revised upward by the BLS to a loss of 6,200 for the month. The number of the state's unemployed residents increased by 1,400, while the number of residents employed fell by 5,000. As a result, Connecticut's unemployment rate increased by one-tenth of a point to 4.6% in November, seasonally adjusted. Resident employment estimates include the self-employed and residents working out of state and are determined separately from the nonfarm payroll job estimates above.

"Job growth in 2017 has slowed significantly since peaking in the second quarter," said Andy Condon, Director of the Office of Research. "However, November's year-over-year decline of 700 jobs does not necessarily mean Connecticut has produced fewer jobs in 2017 than in 2016. On an annual average basis, Connecticut has grown 5,000 jobs over 2016 in the twelve months ending in November."

Nonfarm Jobs Detail (business establishment survey)

Private sector employment fell by 3,300 (-0.2%) to 1,446,700 jobs over the month in November, but remains up by 2,800 jobs (0.2%) over the year. The **government supersector** declined by 200 (-0.1%) to 230,800 jobs last month and over-the-year losses are at -3,500 or -1.5%. The **government supersector** includes all federal, state and local employment, including public higher education and Native American casinos located on tribal land.

Seven of the ten major industry *supersectors* lost employment in November, while only two increased. The **education & health services supersector** remained unchanged (333,600 total jobs). **Other services** led growing industries with 1,300 net new jobs (2.0%, 67,700 total jobs). **Financial activities** saw an increase of 700 jobs (0.5%, 133,300 total).

On the downside, **leisure & hospitality** dropped an estimated 2,000 jobs in November (-1.3%, 151,700 total). **Leisure & hospitality** has lost 9,400 seasonally-adjusted jobs since its peak in June; however, this large drop is more reflective of declines from a very strong summer season to more typical levels than it is of any weakness in the industry. These losses are not reflected in the annualized not seasonally adjusted data. **Professional & business services** was next with a loss of 1,400 (-0.6%, 216,700 total), while the volatile **construction and mining** industry shed 1,300 jobs (-2.2%, 57,700). **Trade, transportation & utilities** lost 400 positions (-0.1%, 297,300 total), driven by a 1,100 seasonally adjusted decline in retail employment. The **manufacturing** (-0.1%, 157,200) and **information** (-0.3%, 31,500 total) *supersectors* both saw small losses of 100 jobs.

Connecticut has now recovered **69.9%** (83,300 jobs) of the 119,100 seasonally adjusted jobs lost in the Great Recession (3/08-2/10). The job recovery is into its 93rd month and the state needs an additional 35,800 jobs to reach an overall nonfarm employment expansion. The state's **private sector** also slipped a bit in the recovery, regaining **89.7%** (100,200) of the 111,700 private sector jobs lost in that same employment downturn. The **government supersector** has lost a total of 24,300 positions since the recession began in March 2008.

Connecticut Labor Market Areas (LMAs): Two of the six LMAs that are seasonally adjusted by the BLS saw job increases in November 2017 and four saw losses. The **Danbury LMA** led gains in November (400, -0.5%, 79,500 total). The **Waterbury LMA** saw a small increase of 100 (0.1%, 67,100 total).

The **Norwich-New London-Westerly LMA** led declines with a drop of 1,100 jobs (-0.9%, 127,900 total). **Bridgeport-Stamford-Norwalk** was next with a loss of 900 jobs (-0.2%, 411,000 total). The **New Haven LMA** shed 700 jobs in November (-0.2%, 284,300 total). Smaller losses were seen in **Hartford-West Hartford-East Hartford** (-300, -0.1%, 570,700 total).

Note: The six major Connecticut LMAs are estimated independently from the statewide data by the BLS and cover more than 90% of the nonfarm employment in the state. Thus, estimates will not fully sum to the statewide total.

Hours and Earnings: The **private sector** workweek, not seasonally adjusted, averaged 34.0 hours in November 2017, up three-tenths of an hour from the same month a year ago. Average hourly earnings at \$31.01, not seasonally adjusted, were up \$0.44 (1.4%) from the November 2016 estimate (\$30.57). The resultant average **private sector** weekly pay amounted to \$1,054.34, up \$24.13 from a year ago (2.3%). The 12-month percentage change in the Consumer Price Index for All Urban Consumers (CPI-U, U.S. City Average, not seasonally adjusted) in November 2017 was 2.2%. Information for the manufacturing production workweek and earnings can be found in the table section of this release under the “Hours and Earnings” data category. *Current all-employee private sector hours and earnings estimates can be volatile due to fluctuating sample responses.*

Labor Force Data (residential household survey)

The November 2017 unemployment rate for Connecticut is estimated at **4.6%** (seasonally adjusted), up one-tenth from October 2017 and up one-tenth of a percentage point from a year ago when it was 4.5%. The US jobless rate in November 2017 was 4.1%, unchanged from October.

Based on the Local Area Unemployment Statistics model (LAUS - a statistical model using the CPS – Current Population Survey residential data), the number of Connecticut unemployed residents, seasonally adjusted, increased by 1,400 (1.6%) over the month to 87,000 in November. Over the year, the number of the state’s jobless residents increased by 2,700 (3.2%). The state’s labor force decreased by 3,700 (-0.2%) over the month, but continued to expand over the year (14,900, 0.8%). This is the fifth consecutive monthly drop in the state’s labor force.

November 2017 seasonally adjusted average weekly initial unemployment claims for first-time filers in Connecticut increased by 566 claimants (16.8%) to 3,931 from October 2017, and were higher by 87 claims (2.3%) from the November 2016 level of 3,844.

*The nonfarm employment estimate, derived from a survey of businesses, is a measure of jobs in the state; the unemployment rate and labor force estimates are based on a household survey, and measure the work status of people who live in Connecticut. Overall, as the national and state economies recover, volatility in monthly numbers can be expected. **Job and employment estimates are best understood in the context of their movement over several months rather than observed changes in a single month’s value.***

Next Connecticut Labor Situation release: Monday, January 22, 2018 (December 2017 data)

Contact: Communications Office

(860) 263-6535

12-21-17

Labor market information is available on the Internet at www.ctdol.state.ct.us/lmi
200 Folly Brook Boulevard, Wethersfield, CT 06109-1114 - www.ct.gov/dol

An Equal Opportunity/Affirmative Action Employer

NONFARM EMPLOYMENT

Jobs - by Place of Work

CONNECTICUT AND THE UNITED STATES - Seasonally Adjusted

	November 2017 P	October 2017 R	September 2017	August 2017	November 2016	Over Month Change	Over Month Rate	Over Year Change	Over Year Rate
CONNECTICUT	1,677,500	1,681,000	1,687,200	1,686,900	1,678,200	-3,500	-0.2%	-700	0.0%
Total Private	1,446,700	1,450,000	1,455,300	1,454,100	1,443,900	-3,300	-0.2%	2,800	0.2%
Goods Producing Industries									
Mining	600	600	600	500	600	0	0.0%	0	0.0%
Construction	57,100	58,400	56,500	57,700	58,100	-1,300	-2.2%	-1,000	-1.7%
Manufacturing	157,200	157,300	156,700	157,000	156,000	-100	-0.1%	1,200	0.8%
Durable Goods	123,100	123,100	122,500	122,900	122,600	0	0.0%	500	0.4%
Nondurable Goods	34,100	34,200	34,200	34,100	33,400	-100	-0.3%	700	2.1%
Service Providing Industries									
Trade, Transportation & Utilities	297,300	297,700	299,100	298,000	298,500	-400	-0.1%	-1,200	-0.4%
Wholesale	64,200	63,400	63,200	63,300	62,800	800	1.3%	1,400	2.2%
Retail	179,100	180,200	182,000	181,400	183,700	-1,100	-0.6%	-4,600	-2.5%
Transp, Warehousing & Utilities	54,000	54,100	53,900	53,300	52,000	-100	-0.2%	2,000	3.8%
Information	31,500	31,600	32,100	31,800	32,100	-100	-0.3%	-600	-1.9%
Financial Activities	133,300	132,600	133,400	132,100	130,200	700	0.5%	3,100	2.4%
Finance & Insurance	112,100	111,700	112,500	111,400	110,000	400	0.4%	2,100	1.9%
Real Estate, Rental & Leasing	21,200	20,900	20,900	20,700	20,200	300	1.4%	1,000	5.0%
Professional & Business Services	216,700	218,100	218,200	216,500	215,800	-1,400	-0.6%	900	0.4%
Prof, Scientific & Tech Services	97,800	98,100	97,900	98,900	96,200	-300	-0.3%	1,600	1.7%
Management of Companies	31,600	31,800	31,700	31,400	32,300	-200	-0.6%	-700	-2.2%
Admn & Support & Waste Mgt Serv	87,300	88,200	88,600	86,200	87,300	-900	-1.0%	0	0.0%
Educational & Health Services	333,600	333,600	333,200	333,300	331,200	0	0.0%	2,400	0.7%
Educational Services	63,800	64,100	64,600	64,900	64,100	-300	-0.5%	-300	-0.5%
Health Care & Social Assistance	269,800	269,500	268,600	268,400	267,100	300	0.1%	2,700	1.0%
Leisure and Hospitality	151,700	153,700	157,000	158,800	155,300	-2,000	-1.3%	-3,600	-2.3%
Arts, Entertainment & Recreation	26,700	28,100	28,500	29,300	26,200	-1,400	-5.0%	500	1.9%
Accommodation & Food Services	125,000	125,600	128,500	129,500	129,100	-600	-0.5%	-4,100	-3.2%
Other Services	67,700	66,400	68,500	68,400	66,100	1,300	2.0%	1,600	2.4%
Government**	230,800	231,000	231,900	232,800	234,300	-200	-0.1%	-3,500	-1.5%
UNITED STATES	147,241,000	147,013,000	146,769,000	146,731,000	145,170,000	228,000	0.2%	2,071,000	1.4%

LABOR MARKET AREAS (LMA)

Labor Market Area employment estimates are made independently of Statewide estimates.

Seasonally Adjusted data	November 2017 P	October 2017 R	September 2017	August 2017	November 2016	Over Month Change	Over Month Rate	Over Year Change	Over Year Rate
Bridgeport-Stamford-Norwalk	411,000	411,900	412,500	411,200	408,300	-900	-0.2%	2,700	0.7%
Danbury	79,500	79,100	79,900	79,900	79,000	400	0.5%	500	0.6%
Hartford	570,700	571,000	571,300	573,300	569,200	-300	-0.1%	1,500	0.3%
New Haven	284,300	285,000	286,500	284,900	282,900	-700	-0.2%	1,400	0.5%
Norwich-New London-Westerly, RI	127,900	129,000	129,400	130,000	129,100	-1,100	-0.9%	-1,200	-0.9%
Waterbury	67,100	67,000	67,000	66,900	67,000	100	0.1%	100	0.1%
<i>Not Seasonally Adjusted data (Non-Classified Areas, State estimated not BLS)</i>									
Enfield	45,500	45,300	44,700	44,500	45,300	200	0.4%	200	0.4%
Torrington-Northwest	33,100	33,300	33,300	33,100	33,000	-200	-0.6%	100	0.3%
Danielson-Northeast	27,500	27,400	27,200	27,100	27,300	100	0.4%	200	0.7%

* Less than 0.05% ** Includes Native American tribal government employment

P = Preliminary

R = Revised

Starting with March, 2011, our monthly statewide and major LMA nonfarm job estimates have been taken over by the US Department of Labor Bureau of Labor Statistics. This is the final phase of transition in this program, which began in 2008. As a result of changes in the estimation procedures, you are likely to see more variability in month-to-month estimates of job counts. Caution should be used in interpreting any single month's estimate. The data are best interpreted to identify trends and cycles over several months and quarters. If you have any questions about these changes, please email us at: dol.lmi@ct.gov. Danbury and Waterbury LMA's are now back to being seasonally adjusted.

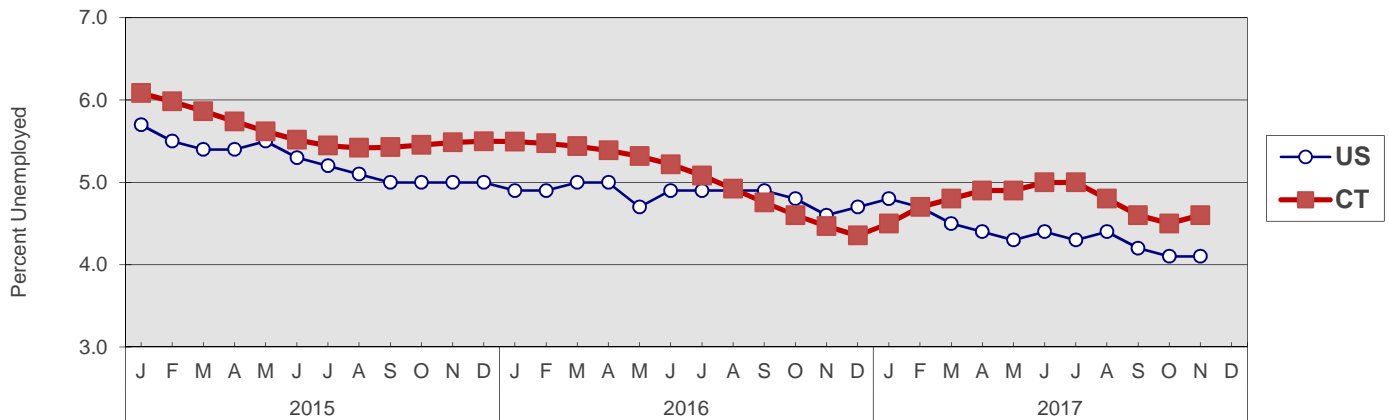
UNEMPLOYMENT

Persons Unemployed - by Place of Residence

CONNECTICUT AND THE UNITED STATES - Seasonally Adjusted

	November 2017 P		November 2016 R		Change		October 2017 R	
	Number	Rate	Number	Rate	Number	Points	Number	Rate
CONNECTICUT								
Unemployed	87,000	4.6	84,300	4.5	2,700	0.1	85,600	4.5
Labor Force	1,902,400		1,887,500		14,900		1,906,100	
UNITED STATES								
Unemployed	6,610,000	4.1	7,409,000	4.6	-799,000	-0.5	6,520,000	4.1
Labor Force	160,529,000		159,456,000		1,073,000		160,381,000	

U.S. AND CONNECTICUT UNEMPLOYMENT RATES - Seasonally Adjusted 2015 - 2017



LABOR MARKET AREAS - Not Seasonally Adjusted

	November 2017 P		November 2016 R		Change		October 2017 R	
	Number	Rate	Number	Rate	Number	Points	Number	Rate
Bridgeport-Stamford								
Danbury								
Danielson-Northeast*								
Worcester NECTA								
Hampton								
Enfield								
Hartford								
New Haven								
Norwich-New London								
Torrington-Northwest**								
Torrington NECTA								
Litchfield								
Waterbury								
CONNECTICUT	82,100	4.3	73,400	3.9	8,700	0.4	81,900	4.3
UNITED STATES	6,286,000	3.9	7,066,000	4.4	-780,000	-0.5	6,242,000	3.9

Release of the November 2017 sub-state labor force data is restricted by the U.S. Bureau of Labor Statistics until Friday, December 22, 2017. An updated *Connecticut Labor Situation* with these data will be available on our website at that time at: <http://www1.ctdol.state.ct.us/lmi/laborsit.pdf>.

P = Preliminary

R = Revised

Labor force data included in this publication are developed in cooperation with the U.S. Department of Labor, Bureau of Labor Statistics.

* Worcester NECTA, CT part and Hampton LMA are combined ** Torrington Metropolitan NECTA and Litchfield LMA are combined

UNEMPLOYMENT RATES

Not Seasonally Adjusted

Release of the November 2017 sub-state labor force data is restricted by the U.S. Bureau of Labor Statistics until Friday, December 22, 2017.

An updated *Connecticut Labor Situation* with these data will be available on our website at that time at:

<http://www1.ctdol.state.ct.us/lmi/laborsit.pdf>.

HOURS AND EARNINGS

CONNECTICUT Statewide - Not Seasonally Adjusted

	Average Weekly Earnings				Average Weekly Hours				Average Hourly Earnings			
	Nov. 2017 P	Nov. 2016	Change over Yr.	Oct. 2017 R	Nov. 2017 P	Nov. 2016	Change over Yr.	Oct. 2017 R	Nov. 2017 P	Nov. 2016	Change over Yr.	Oct. 2017 R
Private Industry All Employees	\$1,054.34	\$1,030.21	\$24.13	\$1,075.86	34.0	33.7	0.3	34.1	\$31.01	\$30.57	\$0.44	\$31.55
Manufacturing*												
Production Workers	\$1,047.08	\$1,082.74	-\$35.66	\$1,040.82	41.9	43.0	-1.1	41.8	\$24.99	\$25.18	-\$0.19	\$24.90

* Production worker data have been impacted by the loss of a large, high-paying manufacturer from the monthly sample.

P = Preliminary

R = Revised

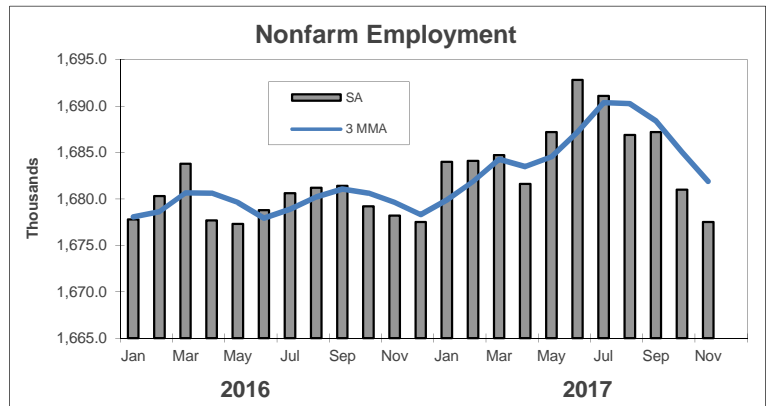
Hours and earnings are also developed for the state's major industry sectors and Labor Market Areas. They can be found on our website at: www.ctdol.state.ct.us/lmi.

TRENDS

Seasonally Adjusted

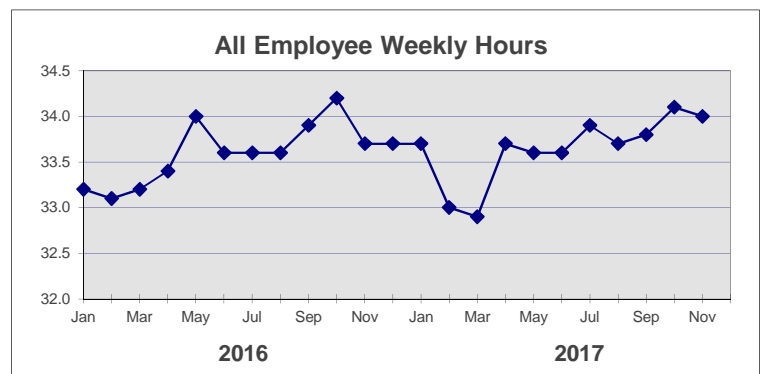
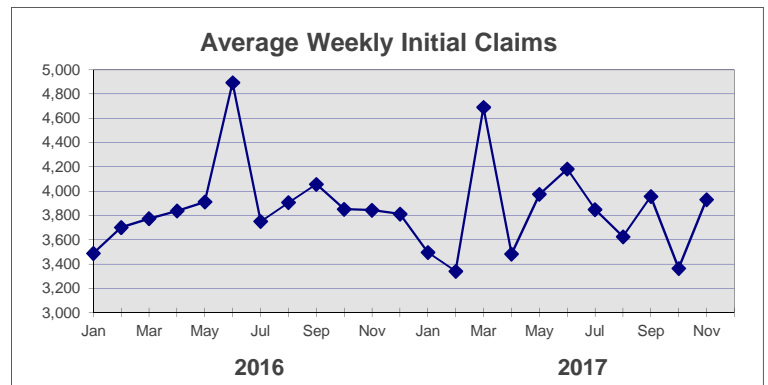
	Nonfarm Employment (000s)	Total Unemployment Rate
2016		
Jan	1,677.8	5.5
Feb	1,680.3	5.5
Mar	1,683.8	5.4
Apr	1,677.7	5.4
May	1,677.3	5.3
Jun	1,678.8	5.2
Jul	1,680.6	5.1
Aug	1,681.2	4.9
Sep	1,681.4	4.8
Oct	1,679.2	4.6
Nov	1,678.2	4.5
Dec	1,677.5	4.4

2017		
Jan	1,684.0	4.5
Feb	1,684.1	4.7
Mar	1,684.7	4.8
Apr	1,681.6	4.9
May	1,687.2	4.9
Jun	1,692.8	5.0
Jul	1,691.1	5.0
Aug	1,686.9	4.8
Sep	1,687.2	4.6
Oct	1,681.0 R	4.5 R
Nov	1,677.5 P	4.6 P
Dec		



	Avg Weekly Initial Claims	All Employee Weekly Hours*
2016		
Jan	3,488	33.2
Feb	3,702	33.1
Mar	3,774	33.2
Apr	3,838	33.4
May	3,911	34.0
Jun	4,894	33.6
Jul	3,750	33.6
Aug	3,906	33.6
Sep	4,057	33.9
Oct	3,852	34.2
Nov	3,844	33.7
Dec	3,812	33.7

2017		
Jan	3,496	33.7
Feb	3,341	33.0
Mar	4,691	32.9
Apr	3,483	33.7
May	3,974	33.6
Jun	4,182	33.6
Jul	3,849	33.9
Aug	3,625	33.7
Sep	3,956	33.8
Oct	3,365	34.1 R
Nov	3,931	34.0 P
Dec		



* Not seasonally adjusted

P = Preliminary

R = Revised

** Labor-management dispute