



LABOR SITUATION

Office of Research
Scott D. Jackson, Commissioner

FOR IMMEDIATE RELEASE

October 2017 Data
CT Unemployment Rate = 4.5%
US Unemployment Rate = 4.1%

Nonfarm jobs decline 6,600 in October; unemployment rate falls to 4.5%

WETHERSFIELD, November 16, 2017 – Preliminary Connecticut nonfarm job estimates from the business payroll survey administered by the US Bureau of Labor Statistics (BLS) show the state lost 6,600 net jobs (-0.4%) in October 2017, to a level of 1,680,600, seasonally adjusted. Over the year, nonagricultural employment in the state grew by 1,400 jobs (0.1%). September's originally-released job loss of 2,000 was revised upward by the BLS to a gain of 300 for the month. The number of the state's unemployed residents fell by 1,500, while the number of residents employed also fell by 6,400. As a result, Connecticut's unemployment rate fell by one-tenth of a point to 4.5% in October, seasonally adjusted. Resident employment estimates include the self-employed and residents working out of state and are determined separately from the nonfarm payroll job estimates above.

"October's decline of 6,600 seasonally adjusted payroll jobs is not good news, but it is not as bad as it appears," said Andy Condon, Director of the Office of Research. "Nearly half the decline comes from the very seasonal leisure & hospitality sector. This loss is exaggerated because the very high summer peak season employment levels were well ahead of last year. In the fall, employment levels returned to a more typical pattern, making recent job losses appear extreme. On an annual average basis, Connecticut's leisure & hospitality employment levels are well ahead of last year."

Nonfarm Jobs Detail (business establishment survey)

Private sector employment fell by 5,600 (-0.4%) to 1,449,700 jobs over the month in October, but remains up by 4,400 jobs (0.3%) over the year. The **government supersector** declined by 1,000 (-0.4%) to 230,900 jobs last month and over-the-year losses are at -3,000, -1.3%. The **government supersector** includes all federal, state and local employment, including public higher education and Native American casinos located on tribal land.

Seven of the ten major industry *supersectors* lost employment in October, while three increased. **Construction & mining** led growing industries with 2,200 net new jobs (3.9%, 59,300 total jobs). **Education & health services** saw an increase of 500 jobs (0.2%, 333,700 total) while the **manufacturing supersector** contributed 100 jobs (0.1%, 156,800 total).

On the downside, **leisure & hospitality** dropped an estimated 3,000 jobs in October (-1.9%, 154,000 total). However, this large drop is more reflective of declines from a very strong summer season to more typical levels than it is of any weakness in the industry. **Other services** was next with a loss of 2,100 (-3.1%, 66,400 total). **Trade, transportation & utilities** shed 1,400 jobs (-0.5%, 297,700) with the retail component accounting for all of the loss. **Financial activities** lost 1,000 positions (-0.8%, 132,400 total), although the *supersector* remains up in employment over the year. The **government supersector** also lost 1,000 positions (-0.4, 230,900), continuing its long-term downward slide. The **information supersector** lost 500 jobs (-1.6%, 31,600 total). Finally, **professional & business services** lost 400 jobs (-0.2%, 217,800 total).

Connecticut has now recovered 72.5% (86,400 jobs) of the 119,100 seasonally adjusted jobs lost in the Great Recession (3/08-2/10). The job recovery is into its 92nd month and the state needs an additional 32,700 jobs to reach an overall nonfarm employment expansion. The state's **private sector** also slipped a bit in the recovery, regaining **92.4%** (103,200) of the 111,700 private sector jobs lost in that same employment downturn. The **government supersector** has lost a total of 24,200 positions since the recession began in March 2008.

Connecticut Labor Market Areas (LMAs): Four of the six LMAs that are seasonally adjusted by the BLS saw job losses in October 2017 and two were unchanged. The **New Haven LMA** led declines in October (-2,500, -0.9%, 284,000 total). The **Bridgeport, Stamford, Norwalk LMA** dropped by 700 (-0.2%, 411,800 total). The **Danbury LMA** dropped 800 jobs (-1.0%, 79,100 total) and the **Waterbury LMA** saw a small loss of 100 (-0.1%, 66,900 total). The **Hartford-West Hartford-East Hartford LMA** and **Norwich, New London, Westerly LMA** were unchanged.

Note: Six major Connecticut LMAs are estimated independently from the statewide data by the BLS and cover more than 90% of the nonfarm employment in the state. Thus, estimates will not fully sum to the statewide total.

Hours and Earnings: The **private sector** workweek, not seasonally adjusted, averaged 34.0 hours in October 2017, down two-tenths of an hour from the same month a year ago. Average hourly earnings at \$31.52, not seasonally adjusted, were up \$0.57 (1.8%) from the October 2016 estimate (\$30.95). The resultant average **private sector** weekly pay amounted to \$1,071.68, up \$13.19 from a year ago (1.2%). The 12-month percentage change in the Consumer Price Index for All Urban Consumers (CPI-U, U.S. City Average, not seasonally adjusted) in October 2017 was 2.0%. Information for the manufacturing production workweek and earnings can be found in the table section of this release under the “Hours and Earnings” data category. *Current all-employee private sector hours and earnings estimates can be volatile due to fluctuating sample responses.*

Labor Force Data (residential household survey)

The October 2017 unemployment rate for Connecticut is estimated at **4.5%** (seasonally adjusted), down one-tenth from September 2017 and down one-tenth of a percentage point from a year ago when it was 4.6%. The US jobless rate in October 2017 was 4.1%, down one-tenth of a point from 4.2% in September.

Based on the Local Area Unemployment Statistics model (LAUS - a statistical model using the CPS – Current Population Survey residential data), the number of Connecticut unemployed residents, seasonally adjusted, decreased by 1,500 (-1.7%) over the month to 85,600 in October. Over the year, the number of the state’s jobless residents has decreased by 1,200 (-1.4%). The state’s labor force decreased by 7,900 (-0.4%) over the month, but continued to expand over the year (17,300, 0.9%). This is the fourth consecutive drop in the state’s labor force.

October 2017 seasonally adjusted average weekly initial unemployment claims for first-time filers in Connecticut decreased by 591 claimants (-14.9%) to 3,365 from September 2017, and were lower by 487 claims (-12.6%) from the October 2016 level of 3,852.

*The nonfarm employment estimate, derived from a survey of businesses, is a measure of jobs in the state; the unemployment rate and labor force estimates are based on a household survey, and measure the work status of people who live in Connecticut. Overall, as the national and state economies recover, volatility in monthly numbers can be expected. **Job and employment estimates are best understood in the context of their movement over several months rather than observed changes in a single month’s value.***

Next Connecticut Labor Situation release: Thursday, December 21, 2017 (November 2017 data)

Contact: Communications Office

(860) 263-6535

11-16-17

Labor market information is available on the Internet at www.ctdol.state.ct.us/lmi

200 Folly Brook Boulevard, Wethersfield, CT 06109-1114 - www.ct.gov/dol

An Equal Opportunity/Affirmative Action Employer

NONFARM EMPLOYMENT

Jobs - by Place of Work

CONNECTICUT AND THE UNITED STATES - Seasonally Adjusted

	October 2017 P	September 2017 R	August 2017	July 2017	October 2016	Over Month Change	Over Month Rate	Over Year Change	Over Year Rate
CONNECTICUT	1,680,600	1,687,200	1,686,900	1,691,100	1,679,200	-6,600	-0.4%	1,400	0.1%
Total Private	1,449,700	1,455,300	1,454,100	1,458,200	1,445,300	-5,600	-0.4%	4,400	0.3%
Goods Producing Industries									
Mining	600	600	500	600	600	0	0.0%	0	0.0%
Construction	58,700	56,500	57,700	58,700	58,600	2,200	3.9%	100	0.2%
Manufacturing	156,800	156,700	157,000	156,400	156,600	100	0.1%	200	0.1%
Durable Goods	122,600	122,500	122,900	122,200	122,800	100	0.1%	-200	-0.2%
Nondurable Goods	34,200	34,200	34,100	34,200	33,800	0	0.0%	400	1.2%
Service Providing Industries									
Trade, Transportation & Utilities	297,700	299,100	298,000	299,900	298,100	-1,400	-0.5%	-400	-0.1%
Wholesale	63,600	63,200	63,300	63,700	63,000	400	0.6%	600	1.0%
Retail	180,000	182,000	181,400	182,300	184,000	-2,000	-1.1%	-4,000	-2.2%
Transp, Warehousing & Utilities	54,100	53,900	53,300	53,900	51,100	200	0.4%	3,000	5.9%
Information	31,600	32,100	31,800	31,800	32,200	-500	-1.6%	-600	-1.9%
Financial Activities	132,400	133,400	132,100	133,000	130,400	-1,000	-0.7%	2,000	1.5%
Finance & Insurance	111,500	112,500	111,400	112,400	110,100	-1,000	-0.9%	1,400	1.3%
Real Estate, Rental & Leasing	20,900	20,900	20,700	20,600	20,300	0	0.0%	600	3.0%
Professional & Business Services	217,800	218,200	216,500	216,400	216,600	-400	-0.2%	1,200	0.6%
Prof, Scientific & Tech Services	98,100	97,900	98,900	99,400	96,200	200	0.2%	1,900	2.0%
Management of Companies	31,700	31,700	31,400	31,500	32,300	0	0.0%	-600	-1.9%
Admn & Support & Waste Mgt Serv	88,000	88,600	86,200	85,500	88,100	-600	-0.7%	-100	-0.1%
Educational & Health Services	333,700	333,200	333,300	333,400	330,700	500	0.2%	3,000	0.9%
Educational Services	64,100	64,600	64,900	65,800	63,900	-500	-0.8%	200	0.3%
Health Care & Social Assistance	269,600	268,600	268,400	267,600	266,800	1,000	0.4%	2,800	1.0%
Leisure and Hospitality	154,000	157,000	158,800	159,100	155,300	-3,000	-1.9%	-1,300	-0.8%
Arts, Entertainment & Recreation	28,200	28,500	29,300	29,000	26,700	-300	-1.1%	1,500	5.6%
Accommodation & Food Services	125,800	128,500	129,500	130,100	128,600	-2,700	-2.1%	-2,800	-2.2%
Other Services	66,400	68,500	68,400	68,900	66,200	-2,100	-3.1%	200	0.3%
Government**	230,900	231,900	232,800	232,900	233,900	-1,000	-0.4%	-3,000	-1.3%
UNITED STATES	147,010,000	146,749,000	146,731,000	146,523,000	145,006,000	261,000	0.2%	2,004,000	1.4%

LABOR MARKET AREAS (LMA)

Labor Market Area employment estimates are made independently of Statewide estimates.

Seasonally Adjusted data	October 2017 P	September 2017 R	August 2017	July 2017	October 2016	Over Month Change	Over Month Rate	Over Year Change	Over Year Rate
Bridgeport-Stamford-Norwalk	411,800	412,500	411,200	411,400	408,800	-700	-0.2%	3,000	0.7%
Danbury	79,100	79,900	79,900	79,900	78,600	-800	-1.0%	500	0.6%
Hartford	571,300	571,300	573,300	575,600	572,300	0	0.0%	-1,000	-0.2%
New Haven	284,000	286,500	284,900	284,700	281,900	-2,500	-0.9%	2,100	0.7%
Norwich-New London-Westerly, RI	129,400	129,400	130,000	131,100	129,200	0	0.0%	200	0.2%
Waterbury	66,900	67,000	66,900	67,100	67,200	-100	-0.1%	-300	-0.4%
<i>Not Seasonally Adjusted data (Non-Classified Areas, State estimated not BLS)</i>									
Enfield	45,200	44,700	44,500	44,700	45,000	500	1.1%	200	0.4%
Torrington-Northwest	33,300	33,300	33,100	33,800	33,200	0	0.0%	100	0.3%
Danielson-Northeast	27,300	27,200	27,100	27,000	27,200	100	0.4%	100	0.4%

* Less than 0.05%

** Includes Native American tribal government employment

P = Preliminary

R = Revised

Starting with March, 2011, our monthly statewide and major LMA nonfarm job estimates have been taken over by the US Department of Labor Bureau of Labor Statistics. This is the final phase of transition in this program, which began in 2008. As a result of changes in the estimation procedures, you are likely to see more variability in month-to-month estimates of job counts. Caution should be used in interpreting any single month's estimate. The data are best interpreted to identify trends and cycles over several months and quarters. If you have any questions about these changes, please email us at: dol.lmi@ct.gov. Danbury and Waterbury LMA's are now back to being seasonally adjusted.

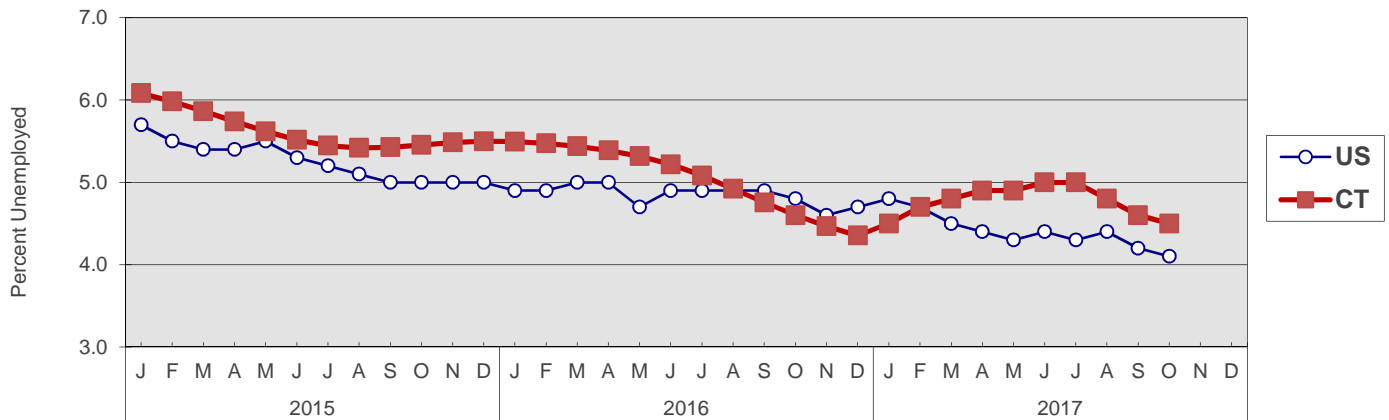
UNEMPLOYMENT

Persons Unemployed - by Place of Residence

CONNECTICUT AND THE UNITED STATES - Seasonally Adjusted

	October 2017 P		October 2016 R		Change		September 2017 R	
	Number	Rate	Number	Rate	Number	Points	Number	Rate
CONNECTICUT								
Unemployed	85,600	4.5	86,900	4.6	-1,300	-0.1	87,100	4.6
Labor Force	1,906,100		1,888,800		17,300		1,914,000	
UNITED STATES								
Unemployed	6,520,000	4.1	7,740,000	4.8	-1,220,000	-0.7	6,801,000	4.2
Labor Force	160,381,000		159,643,000		738,000		161,146,000	

U.S. AND CONNECTICUT UNEMPLOYMENT RATES - Seasonally Adjusted 2015 - 2017



LABOR MARKET AREAS - Not Seasonally Adjusted

	October 2017 P		October 2016 R		Change		September 2017 R	
	Number	Rate	Number	Rate	Number	Points	Number	Rate
Bridgeport-Stamford								
Danbury								
Danielson-Northeast*								
Worcester NECTA								
Hampton								
Enfield								
Hartford								
New Haven								
Norwich-New London								
Torrington-Northwest**								
Torrington NECTA								
Litchfield								
Waterbury								
CONNECTICUT	82,000	4.3	79,400	4.2	2,600	0.1	76,200	4.0
UNITED STATES	6,242,000	3.9	7,447,000	4.7	-1,205,000	-0.8	6,556,000	4.1

Release of the October 2017 sub-state labor force data is restricted by the U.S. Bureau of Labor Statistics until Friday, November 17, 2017.

An updated *Connecticut Labor Situation* with these data will be available on our website at that time at:

<http://www1.ctdol.state.ct.us/lmi/laborsit.pdf>.

P = Preliminary

R = Revised

Labor force data included in this publication are developed in cooperation with the U.S. Department of Labor, Bureau of Labor Statistics.

* Worcester NECTA, CT part and Hampton LMA are combined ** Torrington Metropolitan NECTA and Litchfield LMA are combined

UNEMPLOYMENT RATES

Not Seasonally Adjusted

Release of the October 2017 sub-state labor force data is restricted by the U.S. Bureau of Labor Statistics until Friday, November 17, 2017.

An updated *Connecticut Labor Situation* with these data will be available on our website at that time at:

<http://www1.ctdol.state.ct.us/lmi/laborsit.pdf>.

HOURS AND EARNINGS

CONNECTICUT Statewide - Not Seasonally Adjusted

	Average Weekly Earnings				Average Weekly Hours				Average Hourly Earnings			
	Oct. 2017 P	Oct. 2016	Change over Yr.	Sept. 2017 R	Oct. 2017 P	Oct. 2016	Change over Yr.	Sept. 2017 R	Oct. 2017 P	Oct. 2016	Change over Yr.	Sept. 2017 R
Private Industry All Employees	\$1,071.68	\$1,058.49	\$13.19	\$1,047.80	34.0	34.2	-0.2	33.8	\$31.52	\$30.95	\$0.57	\$31.00
Manufacturing*												
Production Workers	\$1,026.27	\$1,109.30	-\$83.03	\$1,045.00	41.6	43.4	-1.8	41.7	\$24.67	\$25.56	-\$0.89	\$25.06

* Production worker data have been impacted by the loss of a large, high-paying manufacturer from the monthly sample.

P = Preliminary

R = Revised

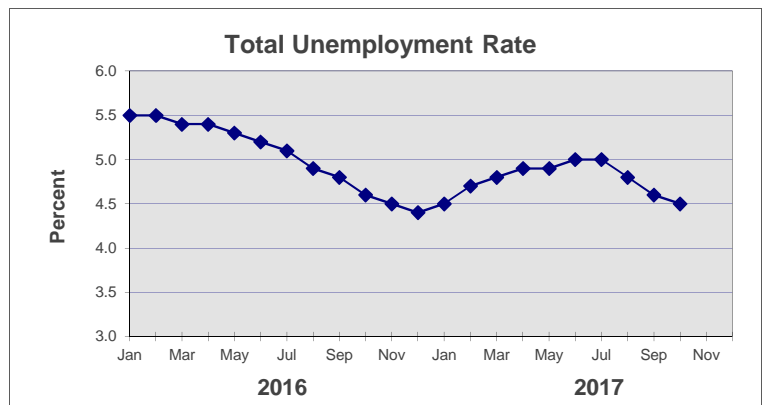
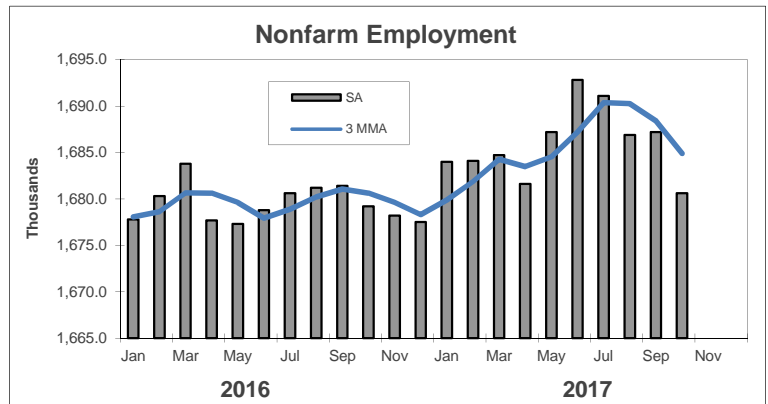
Hours and earnings are also developed for the state's major industry sectors and Labor Market Areas. They can be found on our website at: www.ctdol.state.ct.us/lmi.

TRENDS

Seasonally Adjusted

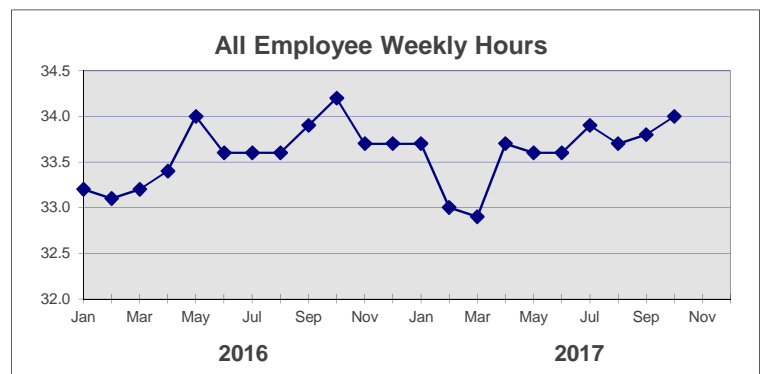
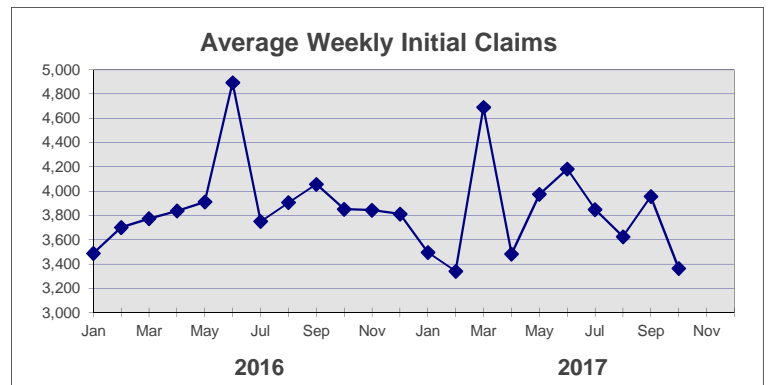
	Nonfarm Employment (000s)	Total Unemployment Rate
2016		
Jan	1,677.8	5.5
Feb	1,680.3	5.5
Mar	1,683.8	5.4
Apr	1,677.7	5.4
May	1,677.3	5.3
Jun	1,678.8	5.2
Jul	1,680.6	5.1
Aug	1,681.2	4.9
Sep	1,681.4	4.8
Oct	1,679.2	4.6
Nov	1,678.2	4.5
Dec	1,677.5	4.4

2017		
Jan	1,684.0	4.5
Feb	1,684.1	4.7
Mar	1,684.7	4.8
Apr	1,681.6	4.9
May	1,687.2	4.9
Jun	1,692.8	5.0
Jul	1,691.1	5.0
Aug	1,686.9	4.8
Sep	1,687.2 R	4.6 P
Oct	1,680.6 P	4.5 R
Nov		
Dec		



	Avg Weekly Initial Claims	All Employee Weekly Hours*
2016		
Jan	3,488	33.2
Feb	3,702	33.1
Mar	3,774	33.2
Apr	3,838	33.4
May	3,911	34.0
Jun	4,894	33.6
Jul	3,750	33.6
Aug	3,906	33.6
Sep	4,057	33.9
Oct	3,852	34.2
Nov	3,844	33.7
Dec	3,812	33.7

2017		
Jan	3,496	33.7
Feb	3,341	33.0
Mar	4,691	32.9
Apr	3,483	33.7
May	3,974	33.6
Jun	4,182	33.6
Jul	3,849	33.9
Aug	3,625	33.7
Sep	3,956	33.8 R
Oct	3,365	34.0 P
Nov		
Dec		



* Not seasonally adjusted

P = Preliminary

R = Revised

** Labor-management dispute