



LABOR SITUATION

Office of Research
Scott D. Jackson, Commissioner

FOR IMMEDIATE RELEASE

October 2016 Data
CT Unemployment Rate = 5.1%
US Unemployment Rate = 4.9%

Nonfarm jobs fall 7,200 in October; unemployment rate declines to 5.1%

WETHERSFIELD, November 17, 2016 – Preliminary Connecticut nonfarm job estimates from the business survey administered by the US Bureau of Labor Statistics (BLS) show the state shed 7,200 jobs in October 2016 to a level of 1,676,400, seasonally adjusted. Over the year, nonagricultural employment in the state has grown by approximately 3,200 jobs (0.2%). September's originally released job decline of 5,200 was revised down further to a loss of 6,600. Despite the sharp decline in payroll jobs, Connecticut's unemployment rate for October fell three tenths of a point to 5.1%, which is now three tenths of a point lower than it was a year ago. The number of the state's unemployed declined by 5,300 (-5.1%) in October.

"Connecticut's two monthly measures of labor market health continue to send mixed signals. Payroll job counts have declined for four consecutive months, indicating a significant slowing of recent job growth trends," said Andy Condon, Director of the Office of Research. "However, the residential employment survey and model continue to show increasing employment, decreasing unemployment and a significant drop in the unemployment rate. We will have to await further data to see which direction our labor markets are headed."

Nonfarm Jobs Detail (business establishment survey)

October 2016 preliminary seasonally adjusted nonfarm job estimates show a decline of 7,200 jobs (-0.4%) over the month. Four of the ten major industry *supersectors* saw job gains. Over the last twelve months, the state has increased nonagricultural employment by 3,200 positions (0.2%) with seven of the ten measured *supersectors* continuing to show annual gains.

Private sector employment fell by 4,200 (-0.3%, 1,440,700 jobs) in October but remains up by 5,000 jobs (0.3%) over the year. The **government supersector** lost 3,000 jobs (-1.3%, 235,700) last month and is now down over the year (-1,800, -0.8%).

Other services (1,100, 1.7%, 66,000 positions) added the most jobs last month. **Construction & mining** was next (800, 1.4%, 57,800), while **manufacturing** contributed 600 net new jobs (0.4%, 159,800) and remains up over the year. **Financial activities** grew by 200 (0.3%, 132,100).

On the down side, the **government supersector** (-3,000, -1.3%, 235,700) saw another sharp loss. **Professional and business services** was next (-2,600, -1.2%, 216,700). Private **education and health services** saw a loss of 1,700 (-0.5%, 327,500 jobs) with both education (-1,100, -1.7%, 63,800) and health (-600, -0.2%, 263,700) contributing. **Leisure and hospitality** dropped jobs for the second month in a row (-1,400, -0.9%, 152,200 jobs) after healthy summer gains. **Trade, transportation and utilities** shed 900 jobs (-0.3%, 295,700) based entirely on weakness in the retail sector (-1,700, -0.9%). Small losses were observed in the **information supersector** (-300, -0.9%, 32,900 jobs).

Recession recovery: Connecticut has now recovered 69.0% (82,200, about 1,028 jobs per month) of the 119,100 seasonally adjusted jobs lost in the Great Recession (3/08-2/10). The job recovery is into its 80th month and the state needs an additional 36,900 jobs to reach an employment expansion. The state's private sector has done somewhat better, recovering 84.3% (94,200, or about 1,178 per month) of the 111,700 private sector jobs lost in that same employment downturn. The **government supersector** has lost 19,400 positions since the recession started in March 2008; including 12,000 since the state's nonfarm employment recovery began in February 2010.

Connecticut Labor Market Areas (LMAs): The *Hartford-West Hartford-East Hartford LMA* (700, 0.1%, 576,100 jobs) was the only regional labor market to add jobs in October and is still the strongest labor market in terms of job growth over the year (8,100, 1.4%) in both numeric and percentage terms. Both the *New Haven LMA* (-2,600, -0.9%, 280,500 jobs) and the *Bridgeport-Stamford-Norwalk LMA* (-2,600, -0.6%, 410,500 jobs) lost an identical amount of jobs in October. The *Norwich-New London-Westerly LMA* also dropped 300 jobs (-0.2%, 128,000 positions) and has now gone back slightly negative over the year (-300, -0.2%).

Note: Six major Connecticut LMAs are estimated independently from the statewide data by the BLS and cover more than 90% of the nonfarm employment in the state. Thus, estimates will not fully sum to the statewide total. Only four of the six BLS-estimated labor markets are seasonally adjusted. The Danbury LMA and the Waterbury LMA are not seasonally adjusted at this time due to a recent geography change.

Hours and Earnings: The **private sector** workweek, not seasonally adjusted, averaged 34.2 hours in October 2016, up one half of an hour from the same month a year ago (1.5%). Average hourly earnings at \$30.86, not seasonally adjusted, were up \$1.37, or 4.6%, from the October 2015 hourly earnings estimate (\$29.49). The resultant average **private sector** weekly pay amounted to \$1,055.41, up \$61.60, or 6.2% higher than a year ago. The 12-month percent change in the Consumer Price Index for All Urban Consumers (CPI-U, U.S. City Average, not seasonally adjusted) in October 2016 was 1.6%. Information for the manufacturing production workweek and earnings can be found in the table section of this release under the "Hours and Earnings" data category. *Current all-employee private sector hours and earnings estimates can be volatile due to fluctuating sample responses.*

Labor Force Data (residential household survey)

The October 2016 unemployment rate for Connecticut was estimated at **5.1%** (seasonally adjusted), down three-tenths of a percentage point from September 2016 (5.4%). This is the fourth consecutive monthly decline in the state's unemployment rate. The state's jobless rate is now three-tenths of percentage point lower than a year ago (5.4%). The US unemployment rate was calculated at 4.9% in October, down one-tenth from both September 2016 and a year ago.

Unemployment: Based on the Local Area Unemployment Statistics model (LAUS - a statistical model applying the CPS – the Current Population Survey residential data), the number of Connecticut unemployed residents, seasonally adjusted, decreased by 5,300 (-5.1%) over the month to 97,900 in October 2016. Over the year, the number of the state's jobless residents has decreased by 3,000 (-3.0%). The state's labor force declined slightly (-600, -0.03%) over the month, but continues to expand moderately over the year (19,700, 1.1%).

The October 2016 seasonally adjusted average weekly initial unemployment claims for first-time filers in Connecticut declined by 272 claimants (-6.6%) to 3,854 from September 2016, and were higher by 131 claims (3.5%) from the October 2015 level of 3,723.

*The nonfarm employment estimate, derived from a survey of businesses, is a measure of jobs in the state; the unemployment rate and labor force estimates are based on a household survey, and measure the work status of people who live in Connecticut. Overall, as the national and state economies recover, volatility in monthly numbers can be expected. **Job and employment estimates are best understood in the context of their movement over several months rather than observed changes in a single month's value.***

Next Connecticut Labor Situation release: Thursday, December 15, 2016 (November 2016 data)

Contact: Communications Office

(860) 263-6535

11-17-16

Labor market information is available on the Internet at www.ctdol.state.ct.us/lmi
200 Folly Brook Boulevard, Wethersfield, CT 06109-1114 - www.ct.gov/dol
An Equal Opportunity/Affirmative Action Employer

NONFARM EMPLOYMENT

Jobs - by Place of Work

CONNECTICUT AND THE UNITED STATES - Seasonally Adjusted

	October 2016 P	September 2016 R	August 2016	July 2016	October 2015	Over Month Change	Over Month Rate	Over Year Change	Over Year Rate
CONNECTICUT	1,676,400	1,683,600	1,690,200	1,690,500	1,673,200	-7,200	-0.4%	3,200	0.2%
Total Private	1,440,700	1,444,900	1,449,100	1,451,200	1,435,700	-4,200	-0.3%	5,000	0.3%
Goods Producing Industries									
Mining	600	600	500	600	600	0	0.0%	0	0.0%
Construction	57,200	56,400	56,300	57,600	57,000	800	1.4%	200	0.4%
Manufacturing	159,800	159,200	159,800	160,300	158,400	600	0.4%	1,400	0.9%
Durable Goods	122,500	122,100	122,400	123,800	122,900	400	0.3%	-400	-0.3%
Nondurable Goods	37,300	37,100	37,400	36,500	35,500	200	0.5%	1,800	5.1%
Service Providing Industries									
Trade, Transportation & Utilities	295,700	296,600	297,200	297,400	297,200	-900	-0.3%	-1,500	-0.5%
Wholesale	64,000	63,800	63,500	63,400	62,600	200	0.3%	1,400	2.2%
Retail	181,000	182,700	183,100	182,600	184,100	-1,700	-0.9%	-3,100	-1.7%
Transp, Warehousing & Utilities	50,700	50,100	50,600	51,400	50,500	600	1.2%	200	0.4%
Information	32,900	33,200	33,600	33,300	32,600	-300	-0.9%	300	0.9%
Financial Activities	132,100	131,900	132,700	133,400	130,200	200	0.2%	1,900	1.5%
Finance & Insurance	111,200	111,200	111,900	112,400	110,000	0	0.0%	1,200	1.1%
Real Estate, Rental & Leasing	20,900	20,700	20,800	21,000	20,200	200	1.0%	700	3.5%
Professional & Business Services	216,700	219,300	218,500	219,000	216,400	-2,600	-1.2%	300	0.1%
Prof, Scientific & Tech Services	94,700	95,200	94,900	96,000	94,600	-500	-0.5%	100	0.1%
Management of Companies	32,800	33,100	32,700	32,800	33,100	-300	-0.9%	-300	-0.9%
Admn & Support & Waste Mgt Serv	89,200	91,000	90,900	90,200	88,700	-1,800	-2.0%	500	0.6%
Educational & Health Services	327,500	329,200	329,100	327,900	326,700	-1,700	-0.5%	800	0.2%
Educational Services	63,800	64,900	64,400	64,000	63,700	-1,100	-1.7%	100	0.2%
Health Care & Social Assistance	263,700	264,300	264,700	263,900	263,000	-600	-0.2%	700	0.3%
Leisure and Hospitality	152,200	153,600	155,500	154,100	152,700	-1,400	-0.9%	-500	-0.3%
Arts, Entertainment & Recreation	28,400	28,300	30,500	29,200	27,100	100	0.4%	1,300	4.8%
Accommodation & Food Services	123,800	125,300	125,000	124,900	125,600	-1,500	-1.2%	-1,800	-1.4%
Other Services	66,000	64,900	65,900	67,600	63,900	1,100	1.7%	2,100	3.3%
Government**	235,700	238,700	241,100	239,300	237,500	-3,000	-1.3%	-1,800	-0.8%
UNITED STATES	144,952,000	144,791,000	144,600,000	144,424,000	142,595,000	161,000	0.1%	2,357,000	1.7%

LABOR MARKET AREAS (LMA)

Labor Market Area employment estimates are made independently of Statewide estimates.

Seasonally Adjusted data	October 2016 P	September 2016 R	August 2016	July 2016	October 2015	Over Month Change	Over Month Rate	Over Year Change	Over Year Rate
Bridgeport-Stamford-Norwalk	410,500	413,100	416,400	415,300	410,800	-2,600	-0.6%	-300	-0.1%
Hartford	576,100	575,400	575,300	574,900	568,000	700	0.1%	8,100	1.4%
New Haven	280,500	283,100	283,700	283,400	279,600	-2,600	-0.9%	900	0.3%
Norwich-New London-Westerly	128,000	128,300	129,200	128,700	128,300	-300	-0.2%	-300	-0.2%
Danbury - Not Seasonally Adjusted	79,000	78,700	78,000	79,000	78,300	300	0.4%	700	0.9%
Waterbury - Not Seasonally Adjusted	67,700	67,300	66,500	67,300	66,400	400	0.6%	1,300	2.0%
<i>Not Seasonally Adjusted data (Non-Classified Areas, State estimated not BLS)</i>									
Enfield	44,800	44,900	45,200	45,600	45,400	-100	-0.2%	-600	-1.3%
Torrington-Northwest	33,600	34,000	33,900	34,700	34,300	-400	-1.2%	-700	-2.0%
Danielson-Northeast	26,800	26,900	27,300	27,200	27,000	-100	-0.4%	-200	-0.7%

* Less than 0.05% ** Includes Native American tribal government employment

P = Preliminary

R = Revised

Starting with March, 2011, our monthly statewide and major LMA nonfarm job estimates have been taken over by the US Department of Labor Bureau of Labor Statistics. This is the final phase of transition in this program, which began in 2008. As a result of changes in the estimation procedures, you are likely to see more variability in month-to-month estimates of job counts. Caution should be used in interpreting any single month's estimate. The data are best interpreted to identify trends and cycles over several months and quarters. If you have any questions about these changes, please email us at: dol.lmi@ct.gov. Danbury and Waterbury LMA's are now not seasonally adjusted.

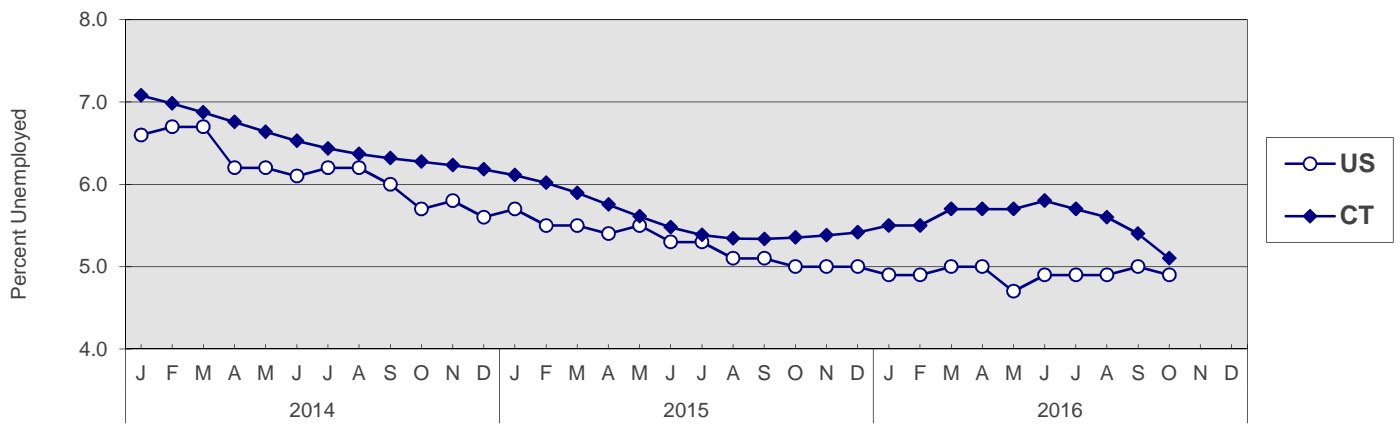
UNEMPLOYMENT

Persons Unemployed - by Place of Residence

CONNECTICUT AND THE UNITED STATES - Seasonally Adjusted

	October 2016 P		October 2015 R		Change		September 2016 R	
	Number	Rate	Number	Rate	Number	Points	Number	Rate
CONNECTICUT								
Unemployed	97,900	5.1	100,800	5.4	-2,900	-0.3	103,200	5.4
Labor Force	1,903,500		1,883,800		19,700		1,904,200	
UNITED STATES								
Unemployed	7,787,000	4.9	7,899,000	5.0	-112,000	-0.1	7,939,000	5.0
Labor Force	159,712,000		157,096,000		2,616,000		159,907,000	

U.S. AND CONNECTICUT UNEMPLOYMENT RATES - Seasonally Adjusted 2014 - 2016



LABOR MARKET AREAS - Not Seasonally Adjusted

	October 2016 P		October 2015 R		Change		September 2016 R	
	Number	Rate	Number	Rate	Number	Points	Number	Rate
Bridgeport-Stamford								
Danbury								
Danielson-Northeast*								
Worcester NECTA								
Hampton								
Enfield								
Hartford								
New Haven								
Norwich-New London								
Torrington-Northwest**								
Torrington NECTA								
Litchfield								
Waterbury								
<p>Release of the October 2016 sub-state labor force data is restricted by the U.S. Bureau of Labor Statistics until Friday, November 18, 2016. An updated <i>Connecticut Labor Situation</i> with these data will be available on our website at that time at: http://www1.ctdol.state.ct.us/lmi/laborsit.pdf.</p>								
CONNECTICUT	85,500	4.5	95,000	5.0	-9,500	-0.5	96,000	5.1
UNITED STATES	7,447,000	4.7	7,597,000	4.8	-150,000	-0.1	7,658,000	4.8

P = Preliminary

R = Revised

Labor force data included in this publication are developed in cooperation with the U.S. Department of Labor, Bureau of Labor Statistics.

* Worcester NECTA, CT part and Hampton LMA are combined ** Torrington Metropolitan NECTA and Litchfield LMA are combined

UNEMPLOYMENT RATES

Not Seasonally Adjusted

Release of the October 2016 sub-state labor force data is restricted by the U.S. Bureau of Labor Statistics until Friday, November 18, 2016.

An updated *Connecticut Labor Situation* with these data will be available on our website at that time at:

<http://www1.ctdol.state.ct.us/lmi/laborsit.pdf>.

HOURS AND EARNINGS

CONNECTICUT Statewide - Not Seasonally Adjusted

	Average Weekly Earnings				Average Weekly Hours				Average Hourly Earnings			
	Oct. 2016 P	Oct. 2015	Change over Yr.	Sep. 2016 R	Oct. 2016 P	Oct. 2015	Change over Yr.	Sep. 2016 R	Oct. 2016 P	Oct. 2015	Change over Yr.	Sep. 2016 R
Private Industry All Employees	\$1,055.41	\$993.81	\$61.60	\$1,029.88	34.2	33.7	0.5	33.9	\$30.86	\$29.49	\$1.37	\$30.38
Manufacturing*												
Production Workers	\$1,107.13	\$1,071.22	\$35.91	\$1,111.54	43.4	40.7	2.7	42.9	\$25.51	\$26.32	-\$0.81	\$25.91

* Production worker data have been impacted by the loss of a large, high-paying manufacturer from the monthly sample.

P = Preliminary

R = Revised

Hours and earnings are also developed for the state's major industry sectors and Labor Market Areas. They can be found on our website at: www.ctdol.state.ct.us/lmi.

TRENDS

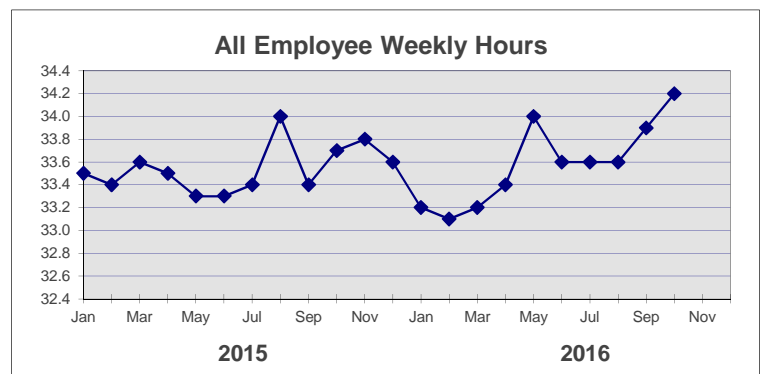
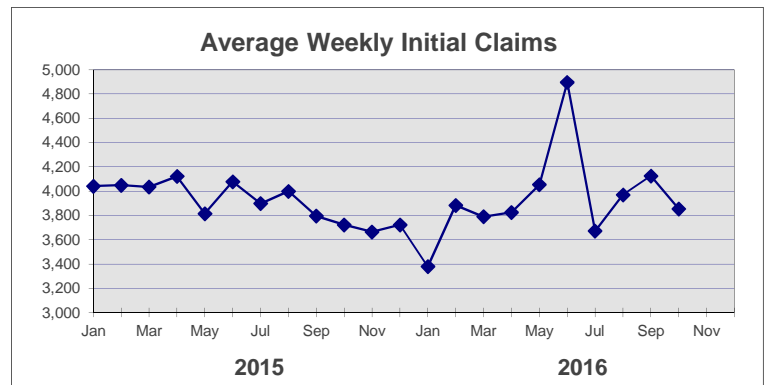
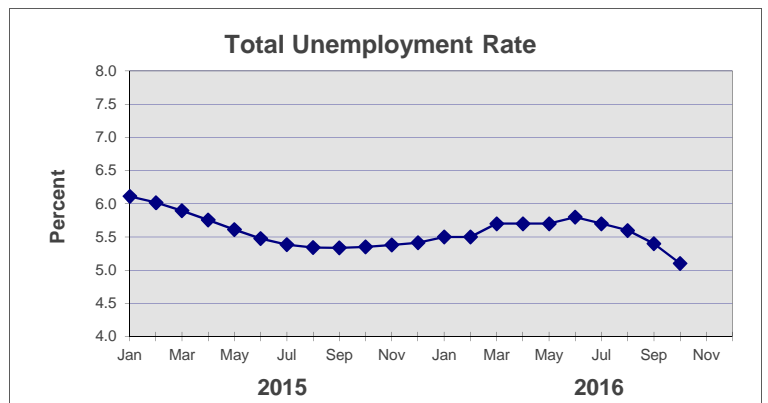
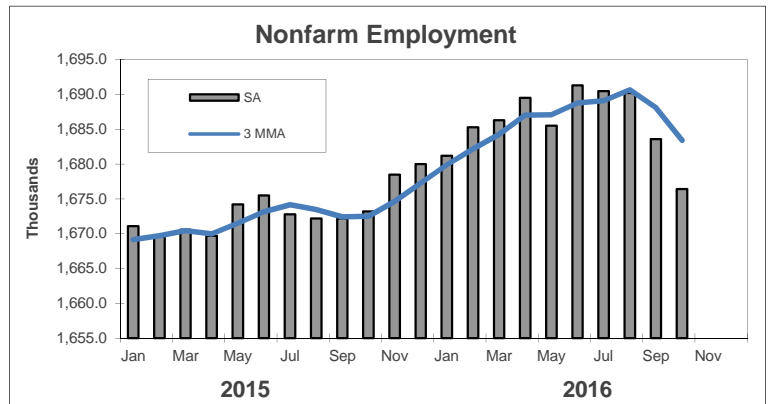
Seasonally Adjusted

	Nonfarm Employment (000s)	Total Unemployment Rate
2015		
Jan	1,671.1	6.1
Feb	1,669.6	6.0
Mar	1,670.6	5.9
Apr	1,669.7	5.8
May	1,674.2	5.6
Jun	1,675.5	5.5
Jul	1,672.8	5.4
Aug	1,672.2	5.3
Sep	1,672.2	5.3
Oct	1,673.2	5.4
Nov	1,678.5	5.4
Dec	1,680.0	5.4

2016		
Jan	1,681.2	5.5
Feb	1,685.3	5.5
Mar	1,686.3	5.7
Apr	1,689.5	5.7
May	1,685.5	5.7
Jun	1,691.3	5.8
Jul	1,690.5	5.7
Aug	1,690.2	5.6
Sep	1,683.6 R	5.4 R
Oct	1,676.4 P	5.1 P
Nov		
Dec		

	Avg Weekly Initial Claims	All Employee Weekly Hours*
2015		
Jan	4,042	33.5
Feb	4,049	33.4
Mar	4,035	33.6
Apr	4,122	33.5
May	3,814	33.3
Jun	4,079	33.3
Jul	3,898	33.4
Aug	4,000	34.0
Sep	3,795	33.4
Oct	3,723	33.7
Nov	3,665	33.8
Dec	3,722	33.6

2016		
Jan	3,379	33.2
Feb	3,884	33.1
Mar	3,790	33.2
Apr	3,825	33.4
May	4,053	34.0
Jun	4,896	33.6
Jul	3,671	33.6
Aug	3,970	33.6
Sep	4,126	33.9 R
Oct	3,854	34.2 P
Nov		
Dec		



* Not seasonally adjusted

P = Preliminary

R = Revised

** Labor-management dispute