



LABOR SITUATION

Office of Research
Sharon M. Palmer, Commissioner

FOR IMMEDIATE RELEASE

June 2014 Data

CT Unemployment Rate = 6.7%
US Unemployment Rate = 6.1%

State unemployment rate continues decline; fifth straight month of nonfarm job gains

WETHERSFIELD, July 17, 2014 – June preliminary nonfarm employment estimates from the national establishment survey indicate steady ongoing job growth for Connecticut. The state added 1,700 total nonfarm positions (0.1%) in June for the fifth straight monthly increase and has now added 5,300 jobs (0.3%) over the year. May's initial nonfarm job gain of 5,800 was revised higher to 6,000 (0.4%). The June level of seasonally adjusted nonfarm employment, at 1,667,400, is now at another new employment recovery high.

Connecticut's unemployment rate was calculated at 6.7% for June (residential survey), down two-tenths of a percentage point from the May 2014 rate of 6.9% and lower by one and two-tenths of a percentage point from June 2013 (7.9%). The unemployment rate at 6.7% has not been this low since December 2008. Connecticut's number of unemployed residents underwent the biggest monthly drop in 2014 (-4,338, -3.3%). Since June 2013, the number of unemployed residents has declined by 20,876 (-14.3%). The civilian labor force continued to increase slightly in June (750) and has managed six consecutive monthly increases in 2014. Connecticut's labor force is now higher by 16,076 (0.9%) participants over the year.

"Connecticut's unemployment rate continues to decline for all the right reasons, such as broad industry job growth coupled with declining unemployment, and an expanding labor force," said Andy Condon, Director of the Office of Research. "Summer seasonal hiring seems to have begun at expected rates."

Nonfarm Jobs (business establishment survey)

June initial nonfarm employment estimates increased 1,700 (0.1%) positions to 1,667,400 – another new Connecticut employment recovery high (seasonally adjusted). This is the fifth monthly nonfarm job gain in a row since the January 2014 deep freeze. The state's overall nonfarm employment has increased 5,300 positions (0.3%) since June 2013. The three-month moving average of the state's nonfarm employment has been on a rising trend since March, indicating sustained growth (see page 7).

Private sector job growth increased just 500 positions (0.03%) in June but is responsible for all of the nonfarm job gains over the year (14,400, 1.0%). **Government** entities were also higher in June (1,200, 0.5%), but are still showing losses - declining 9,100 jobs (-3.7%) over the year. **Local government** groupings look especially weak over the year (-6,900, -4.3%) this month, mostly driven by very late school closings in June 2013. Also the state is no longer seeing the usual summer uptick in tribal casino hiring, which is measured in local government, as had occurred in years past.

Seven of the ten major industry *supersectors* added positions in June, while three industry *supersectors* declined. Recent *supersector* industry gains have come from a broad span of industry sectors, with seven of ten *supersectors* expanding jobs in June and eight of ten in May.

The seven major industry *supersector* nonfarm job gains (business survey) were led higher by the **government supersector** (1,200, 0.5%) this June. Small job losses from **federal** (-100, -0.6%) and **local government** (-100, -0.1%) entities were more than offset by a **state government** employment gain (1,400, 2.1%), which may have been related to summer hiring. **Professional and business services** (700, 0.3%) were the next fastest growing *supersector*. The **scientific and technical services** (2,000, 2.2%) component was especially vibrant. The **trade, transportation & utilities** (600, 0.2%) *supersector* also added positions, led by **wholesale trade** (600, 0.2%) while the **education and health services** (400, 0.1%) *supersector* contributed to monthly gains as well. Both of the goods-producing *supersectors* chipped in small job increases. The **manufacturing supersector** (300, 0.2%) was boosted by **non-durable goods** (500, 1.3%), while the combined **construction and mining** (200, 0.4%) *supersector* rebounded a little from a loss in May. Additionally, Connecticut experienced a slight job increase from

the small **information supersector** (100, 0.3%) which could be influenced by movie production hiring for the summer.

The three job-losing industry *supersectors* were led by the **leisure and hospitality** (-1,000, -0.7%) *supersector*. This grouping had been expanding consistently for four months in a row since the January deep freeze, but fell off this month as **restaurants and hotels** (-1,300, -1.0%) were surprisingly lower. The **other services** (-600, -1.0%) *supersector* was also down, as was **financial activities** (-200, -0.2%). **Finance and insurance** (-200, -0.2%) was the weakest component in the group while **real estate** was unchanged.

Recession recovery: Connecticut has now recovered 73,500 positions, or 61.7% of the 119,100 seasonally adjusted **total nonfarm** jobs that were lost in the state during the March 2008 - February 2010 employment downturn. Connecticut's jobs recovery is now 52 months old and is averaging approximately 1,413 jobs per month overall since February 2010. The **private sector** has recuperated at a faster pace and has now recovered 82,600 (73.7%, 1,588 per month) of the 112,000 private sector jobs that were lost during the same period. Now at 1,667,400 nonfarm jobs for June, the state needs to reach the 1,713,000 level to start a true nonfarm employment expansion. This will require an additional 45,600 jobs going forward. A total of 29,400 additional private sector positions are needed to have a fully recovered private sector.

Labor Market Areas (LMAs): June 2014 preliminary nonfarm estimates show four of the six major Connecticut Labor Market Areas (Bureau of Labor Statistics-recognized LMAs) expanded employment, while two LMAs posted job declines. The **New Haven LMA** (2,200, 0.8%) led LMA job gainers this month, while the **Bridgeport-Stamford-Norwalk LMA** (1,800, 0.4%) also exhibited a solid employment increase. The **Waterbury LMA** (600, 0.9%) and the **Danbury LMA** (600, 0.9%) both posted very similar monthly job gains. The **Hartford LMA** (-2,500, -0.5%) was the big declining LMA this month, while the **Norwich-New London LMA** (-100, -0.1%) was also lower in June. Over the year, only the **Norwich-New London LMA** is lower (-1,900, -1.5%) in nonfarm job counts. *Note: The major Connecticut LMAs are estimated and seasonally adjusted independently from the statewide numbers by the BLS and cover about 90% of the nonfarm employment in the state, so they will not fully sum to the statewide total.*

Hours and Earnings: The **private sector** workweek, not seasonally adjusted, averaged 33.8 hours in June 2014, down two-tenths of an hour from the year-ago June 2013 estimate of 34.0 hours. Average hourly earnings at \$28.18, not seasonally adjusted, were up ten cents, or 0.4% from the June 2013 hourly private sector pay figure of \$28.08. The resulting average **private sector** weekly pay was calculated at \$952.48, down \$2.24, or -0.2% over the year. The year-to-year change in the Consumer Price Index for All Urban Consumers (CPI-U, U.S. City Average, not seasonally adjusted) in June 2014 was not available at the time of this release (due out July 22). Information for the manufacturing production workweek and earnings can be found in the table section of this release under the "Hours and Earnings" data category.

Labor Force Data (residential household survey)

Connecticut's unemployment rate was estimated at **6.7%** for June 2014 (seasonally adjusted). This is down two-tenths of a percentage point from May 2014, and down one and two-tenths of a percentage point from the June 2013 unemployment rate of 7.9%. June's statewide civilian labor force was higher for the sixth straight month (750) and is now on a clear upward trend over the year (16,079, 0.9%). The unemployment rate in Connecticut has not been this low since December of 2008. The jobless rate continues to decline appreciably in 2014, even with an expanding labor force that signals more people are looking for work.

Unemployment: Based on the household survey, the number of unemployed, seasonally adjusted, decreased by 4,338 (-3.3%) over the month to 125,399 in June 2014. This was biggest monthly decline in the number of unemployed in 2014. The state's number of unemployed residents has declined by 20,876 (-14.3%) since June 2013. The labor force statistics for the state have been encouraging so far this year. The United States unemployment rate was 6.1% in June, down two-tenths of a percent from the May 2014 rate (6.3%), and lower by one and four-tenths of a percentage point from the June 2013 rate, which was estimated at 7.5%.

It is worth noting that the household survey employment component has been growing meaningfully since the beginning of the year, posting a nice increase this month (5,088, 0.3%) and running very strong over the year (36,952, 2.2%). Full historical unemployment data from the household survey are available on our website under the Local Area Unemployment Statistics (LAUS) program section. **As always, the sample size underlying our labor force and unemployment data is very small and caution is advised in interpreting these trends.**

The June 2014 average weekly initial unemployment claims for first-time Connecticut filers (seasonally adjusted) increased over the month by 400 claims (9.6%) to 4,550, but were slightly lower by 52 claims (-1.1%) from last June (4,602).

*The nonfarm employment estimate, derived from a survey of businesses, is a measure of jobs in the state; the unemployment rate, based on a household survey, is a measure of the work status of people who live in Connecticut. Overall, as the national and state economies recover, volatility in monthly numbers can be expected. Additionally, changes in methodology that culminated in March 2011 with the U.S. Department of Labor, Bureau of Labor Statistics assuming complete responsibility for estimating all states' monthly nonfarm job counts, have contributed to the month-to-month variability in the numbers. **Jobs estimates are best understood in the context of their movement over several months rather than observed changes in a single month's estimate.***

Next Connecticut Labor Situation release: Friday, August 15, 2014 (July 2014 data)

Contact: Communications Office

(860) 263-6535

07-17-14

Labor market information is available on the Internet at www.ctdol.state.ct.us/lmi
200 Folly Brook Boulevard, Wethersfield, CT 06109-1114 - www.ct.gov/dol
An Equal Opportunity/Affirmative Action Employer

NONFARM EMPLOYMENT

Jobs - by Place of Work

CONNECTICUT AND THE UNITED STATES - Seasonally Adjusted

	June 2014 P	May 2014 R	April 2014	March 2014	June 2013	Over Month Change	Over Month Rate	Over Year Change	Over Year Rate
CONNECTICUT	1,667,400	1,665,700	1,659,700	1,658,000	1,662,100	1,700	0.1%	5,300	0.3%
Total Private	1,431,000	1,430,500	1,425,300	1,424,000	1,416,600	500	0.0%	14,400	1.0%
Goods Producing Industries									
Mining	600	600	500	600	600	0	0.0%	0	0.0%
Construction	55,600	55,400	56,400	56,000	53,700	200	0.4%	1,900	3.5%
Manufacturing	163,000	162,700	161,900	162,100	164,100	300	0.2%	-1,100	-0.7%
Durable Goods	124,900	125,100	124,200	124,600	127,800	-200	-0.2%	-2,900	-2.3%
Nondurable Goods	38,100	37,600	37,700	37,500	36,300	500	1.3%	1,800	5.0%
Service Providing Industries									
Trade, Transportation & Utilities	303,700	303,100	301,300	300,500	298,700	600	0.2%	5,000	1.7%
Wholesale	65,600	65,000	64,100	64,100	63,200	600	0.9%	2,400	3.8%
Retail	183,600	183,400	183,500	183,700	183,500	200	0.1%	100	0.1%
Transp, Warehousing & Utilities	54,500	54,700	53,700	52,700	52,000	-200	-0.4%	2,500	4.8%
Information	31,800	31,700	31,500	31,700	32,100	100	0.3%	-300	-0.9%
Financial Activities	130,300	130,500	130,900	130,700	131,400	-200	-0.2%	-1,100	-0.8%
Finance & Insurance	111,200	111,400	111,700	111,600	112,400	-200	-0.2%	-1,200	-1.1%
Real Estate, Rental & Leasing	19,100	19,100	19,200	19,100	19,000	0	0.0%	100	0.5%
Professional & Business Services	206,900	206,200	203,900	203,500	204,900	700	0.3%	2,000	1.0%
Prof, Scientific & Tech Services	92,200	90,200	88,400	89,900	90,500	2,000	2.2%	1,700	1.9%
Management of Companies	29,100	29,200	29,300	29,400	29,000	-100	-0.3%	100	0.3%
Admn & Support & Waste Mgt Serv	85,600	86,800	86,200	84,200	85,400	-1,200	-1.4%	200	0.2%
Educational & Health Services	326,300	325,900	325,500	325,600	321,400	400	0.1%	4,900	1.5%
Educational Services	63,400	63,500	63,200	63,700	62,300	-100	-0.2%	1,100	1.8%
Health Care & Social Assistance	262,900	262,400	262,300	261,900	259,100	500	0.2%	3,800	1.5%
Leisure and Hospitality	151,100	152,100	151,400	151,100	147,600	-1,000	-0.7%	3,500	2.4%
Arts, Entertainment & Recreation	25,700	25,400	25,100	25,000	25,900	300	1.2%	-200	-0.8%
Accommodation & Food Services	125,400	126,700	126,300	126,100	121,700	-1,300	-1.0%	3,700	3.0%
Other Services	61,700	62,300	62,000	62,200	62,100	-600	-1.0%	-400	-0.6%
Government**	236,400	235,200	234,400	234,000	245,500	1,200	0.5%	-9,100	-3.7%
UNITED STATES	138,780,000	138,492,000	138,268,000	137,964,000	136,285,000	288,000	0.2%	2,495,000	1.8%

LABOR MARKET AREAS (LMA)

Labor Market Area employment estimates are made independently of Statewide estimates.

Seasonally Adjusted data	June 2014 P	May 2014 R	April 2014	March 2014	June 2013	Over Month Change	Over Month Rate	Over Year Change	Over Year Rate
Bridgeport-Stamford	419,200	417,400	417,500	415,800	411,600	1,800	0.4%	7,600	1.8%
Danbury	69,500	68,900	69,100	69,500	69,000	600	0.9%	500	0.7%
Hartford	553,200	555,700	549,900	550,900	551,300	-2,500	-0.4%	1,900	0.3%
New Haven	280,300	278,100	277,700	277,600	274,900	2,200	0.8%	5,400	2.0%
Norwich-New London	126,100	126,200	126,600	126,100	128,000	-100	-0.1%	-1,900	-1.5%
Waterbury	65,200	64,600	64,300	64,500	64,500	600	0.9%	700	1.1%
<i>Not Seasonally Adjusted data (Non-Classified Areas, State estimated not BLS)</i>									
Enfield	45,100	45,000	45,200	43,800	44,900	100	0.2%	200	0.4%
Torrington	37,300	36,700	36,400	35,500	37,100	600	1.6%	200	0.5%
Willimantic-Danielson	38,300	38,100	37,800	37,300	37,700	200	0.5%	600	1.6%

* Less than 0.05% ** Includes Native American tribal government employment

P = Preliminary

R = Revised

Starting with March, 2011, our monthly statewide and major LMA nonfarm job estimates have been taken over by the US Department of Labor Bureau of Labor Statistics. This is the final phase of transition in this program, which began in 2008. As a result of changes in the estimation procedures, you are likely to see more variability in month-to-month estimates of job counts. Caution should be used in interpreting any single month's estimate. The data are best interpreted to identify trends and cycles over several months and quarters. If you have any questions about these changes, please email us at: dol.lmi@ct.gov.

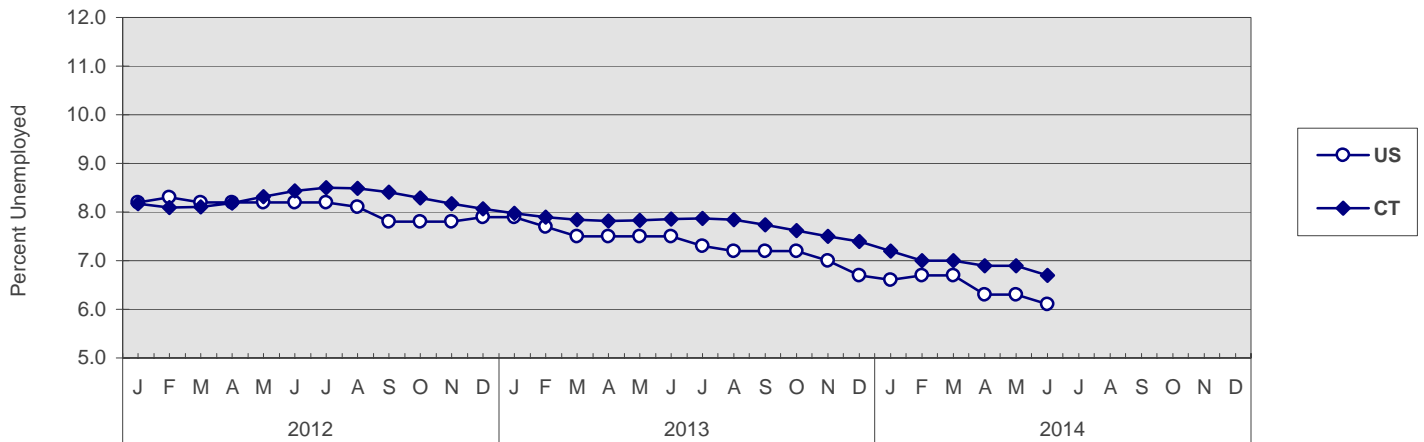
UNEMPLOYMENT

Persons Unemployed - by Place of Residence

CONNECTICUT AND THE UNITED STATES - Seasonally Adjusted

	June 2014 P		June 2013		Change		May 2014 R	
	Number	Rate	Number	Rate	Number	Points	Number	Rate
CONNECTICUT								
Unemployed	125,400	6.7	146,300	7.9	-20,900	-1.2	129,700	6.9
Labor Force	1,878,400		1,862,300		16,100		1,877,600	
UNITED STATES								
Unemployed	9,474,000	6.1	11,747,000	7.5	-2,273,000	-1.4	9,799,000	6.3
Labor Force	155,694,000		155,822,000		-128,000		155,613,000	

U.S. AND CONNECTICUT UNEMPLOYMENT RATES - Seasonally Adjusted 2012 - 2014



LABOR MARKET AREAS - Not Seasonally Adjusted

	June 2014 P		June 2013		Change		May 2014 R	
	Number	Rate	Number	Rate	Number	Points	Number	Rate
Bridgeport-Stamford								
Danbury								
Enfield								
Hartford								
New Haven								
Norwich-New Britain								
Torrington								
Waterbury								
Willimantic-Danielson								
CONNECTICUT	122,200	6.4	152,700	8.1	-30,500	-1.7	130,500	6.9
UNITED STATES	9,893,000	6.3	12,248,000	7.8	-2,355,000	-1.5	9,443,000	6.1

Release of the June 2014 sub-state labor force data is restricted by the U.S. Bureau of Labor Statistics until Friday, July 18, 2014. An updated *Connecticut Labor Situation* with these data will be available on our website at that time at: <http://www1.ctdol.state.ct.us/lmi/laborsit.pdf>.

P = Preliminary

R = Revised

Labor force data included in this publication are developed in cooperation with the U.S. Department of Labor, Bureau of Labor Statistics.

UNEMPLOYMENT RATES

Not Seasonally Adjusted

LABOR MARKET AREAS

Release of the June 2014 sub-state labor force data is restricted by the U.S. Bureau of Labor Statistics until Friday, July 18, 2014. An updated *Connecticut Labor Situation* with these data will be available on our website at that time at:
<http://www1.ctdol.state.ct.us/lmi/laborsit.pdf>.

HOURS AND EARNINGS

CONNECTICUT Statewide - Not Seasonally Adjusted

	Average Weekly Earnings				Average Weekly Hours				Average Hourly Earnings			
	June 2014 P	June 2013	Change over Yr.	May 2014 R	June 2014 P	June 2013	Change over Yr.	May 2014 R	June 2014 P	June 2013	Change over Yr.	May 2014 R
Private Industry All Employees	\$952.48	\$954.72	-\$2.24	\$935.09	33.8	34.0	-0.2	33.6	\$28.18	\$28.08	\$0.10	\$27.83
Manufacturing*												
Production Workers	\$898.16	\$897.21	\$0.95	\$877.89	41.2	41.1	0.1	40.4	\$21.80	\$21.83	-\$0.03	\$21.73

* Production worker data have been impacted by the loss of a large, high-paying manufacturer from the monthly sample.

P = Preliminary

R = Revised

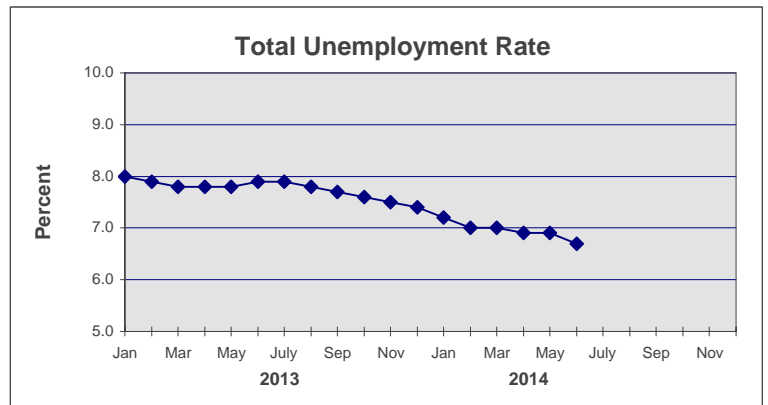
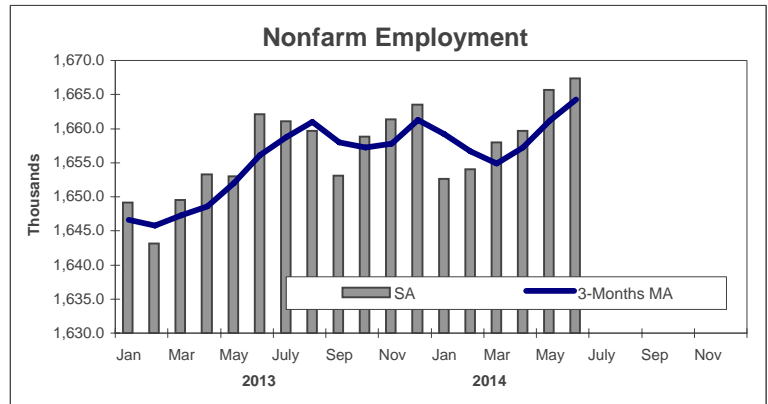
Hours and earnings are also developed for the state's major industry sectors and Labor Market Areas. They can be found on our website at: www.ctdol.state.ct.us/lmi.

TRENDS

Seasonally Adjusted

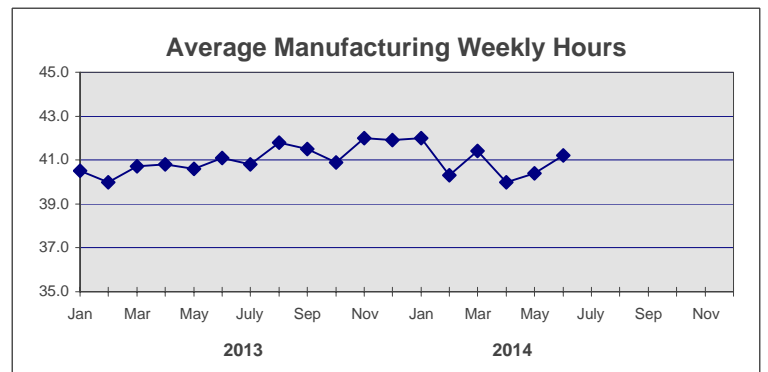
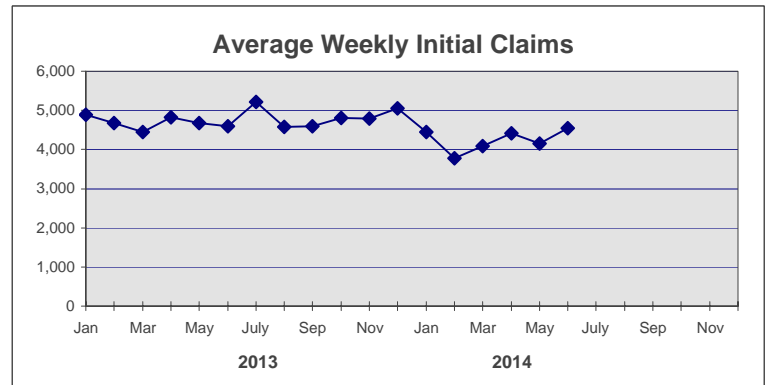
	Nonfarm Employment (000s)	Total Unemployment Rate
2013		
Jan	1,649.2	8.0
Feb	1,643.1	7.9
Mar	1,649.5	7.8
Apr	1,653.3	7.8
May	1,653.0	7.8
Jun	1,662.1	7.9
July	1,661.1	7.9
Aug	1,659.7	7.8
Sep	1,653.1	7.7
Oct	1,658.8	7.6
Nov	1,661.4	7.5
Dec	1,663.5	7.4

2014		
Jan	1,652.6	7.2
Feb	1,654.0	7.0
Mar	1,658.0	7.0
Apr	1,659.7	6.9
May	1,665.7 R	6.9 R
Jun	1,667.4 P	6.7 P
July		
Aug		
Sep		
Oct		
Nov		
Dec		



	Avg Weekly Initial Claims	Avg Manufacturing Weekly Hours*
2013		
Jan	4,884	40.5
Feb	4,669	40.0
Mar	4,452	40.7
Apr	4,823	40.8
May	4,672	40.6
Jun	4,602	41.1
July	5,220	40.8
Aug	4,585	41.8
Sep	4,598	41.5
Oct	4,805	40.9
Nov	4,786	42.0
Dec	5,054	41.9

2014		
Jan	4,442	42.0
Feb	3,775	40.3
Mar	4,089	41.4
Apr	4,412	40.0
May	4,150	40.4 R
Jun	4,550	41.2 P
July		
Aug		
Sep		
Oct		
Nov		
Dec		



* Not seasonally adjusted

P = Preliminary

R = Revised

** Labor-management dispute