



LABOR SITUATION

Office of Research
Sharon M. Palmer, Commissioner

FOR IMMEDIATE RELEASE

April 2014 Data
CT Unemployment Rate = 6.9%
US Unemployment Rate = 6.3%

April nonfarm jobs gain (2,200); unemployment rate drops to 6.9%

WETHERSFIELD, May 15, 2014 – Preliminary nonfarm employment estimates from the business establishment payroll survey show a pattern of continuing job growth for Connecticut. The state added 2,200 total nonfarm jobs (0.1%) in April for the third consecutive monthly increase and has now added 6,900 jobs (0.4%) over the year. Private sector job gains comprised 1,800 (0.1%) of last month's increase and are stronger over the year (10,800, 0.8%) compared to overall nonfarm employment.

Connecticut's unemployment rate was estimated at 6.9% in April, down one-tenth of a percentage point from March 2014, and down nine-tenths of a percentage point from the 7.8% rate a year ago. The underlying statistical components of the unemployment rate are quite positive trends with the first yearly gain in civilian labor force since March 2011, and the strongest annual residential employment gain (19,595, 1.1%) since April 2007. The number of unemployed residents declined 2,023 (-1.6%) in April and has declined by 17,302 (-11.9%) since April 2013.

"Both the establishment and household employment surveys are pointing to an improving labor market going forward for the state after extreme winter volatility," said Andy Condon, Director of the Office of Research. "The expanding labor force, growing private sector work hours, and diminishing unemployment are encouraging signs for Connecticut's economy. Even though the pace of Connecticut's employment recovery is moderate, it seems to be on solid footing."

Nonfarm Jobs (business establishment survey)

Nonfarm job estimates for the state increased again in April adding 2,200 (0.1%) to payrolls. This is the third straight monthly job gain. Over-the-year, nonfarm employment has increased 6,900 positions (0.4%). Job gains were 1,400 for February, 4,000 in March, and 2,200 in April (7,600 net positions in the last three months) and this helped make up for some of the job loss from the extreme January weather-related decline (-10,900). The three-month moving average of nonfarm employment (page 7), used to smooth month-to-month volatility, is depicting this spring rebound.

At the major industry *supersector* level, nonfarm job gains and losses were modest in April as no *supersector* changed by more than a thousand positions. Six major industry *supersectors* added positions and four declined.

The **trade, transportation, and utilities** (800, 0.3%) *supersector* led the job gainers. Transportation components were the most robust in this grouping, while a later-than-usual Easter had little impact on retail or wholesale trade. Also growing were the **leisure and hospitality** (700, 0.5%) and **education and health services** (700, 0.2%) *supersectors*. Restaurants and hotels continue to be a strong contributor for leisure sectors, while colleges and universities resumed pace after the March spring break. **Financial activities** (500, 0.4%) were also positive in April with both real estate and finance and insurance drifting higher. The combined **construction and mining** (400, 0.7%) *supersector*, which had been fairly resilient this winter, continued to add jobs. The **government** *supersector* (400, 0.2%) also saw a small increase in April but has lost the most jobs of any *supersector* over the year (-3,900, 1.6%). Government has lost the most jobs since the overall employment recovery began (-11,100) in February 2010.

The four job-losing industry *supersectors* were led down by **professional and business services** (-600, -0.3%). The **other services** (-400, -0.6%) *supersector* was also lower in April. The **manufacturing** *supersector* (-200, -0.1%) components were also slightly lower. Durable goods was off (-400, -0.3%). The **information** (-100, -0.3%) *supersector* was just slightly down.

Recession recovery: Connecticut has recovered 66,300 positions, or 55.7% of the 119,100 seasonally adjusted total nonfarm jobs that were lost in the state during the March 2008 - February 2010 employment downturn.

Connecticut's jobs recovery is now 50 months old and is averaging approximately 1,326 jobs per month overall since February 2010. The core **private sector** has recovered at a faster pace and has now gotten back 77,400 (69.1%, 1,548 per month) of the 112,000 private jobs that were lost during the same recessionary period. Now at 1,660,200 nonfarm jobs for April, the state needs to reach the 1,713,000 level to start a true nonfarm employment expansion. This will require an additional 52,800 jobs going forward.

Labor Market Areas (LMAs): April 2014 preliminary nonfarm estimates reveal three of the six major Connecticut Labor Market Areas (Bureau of Labor Statistics-recognized LMAs) posted nonfarm job gains, while three showed declines. The employment growth last month was located along the shoreline. The **Bridgeport-Stamford-Norwalk LMA** (1,500, 0.4%) exhibited the best April job increase and also leads the state in regional employment growth over the year (7,200, 1.8%). The **New Haven LMA** (600, 0.2%) also had solid job gains in April, as did the **Norwich-New London LMA** (500, 0.4%). The **Danbury LMA** (-500, -0.7%), **Hartford LMA** (-400, -0.1%), and **Waterbury LMA** (-200, -0.3%) were all lower last month. The **Danbury LMA** (-100, -0.1%) joined the **Norwich-New London LMA** (-1,500, -1.2%) last month as the only two major LMA's in the state to lose jobs over the year. *Note: The major Connecticut LMAs are estimated and seasonally adjusted independently from the statewide numbers by the BLS and cover about 90% of the nonfarm employment in the state, so they will not fully sum to the statewide total.*

Hours and Earnings: The **private sector** workweek, not seasonally adjusted, averaged 33.7 hours in April 2014, up one-tenth of an hour from the year ago April 2013 estimate of 33.6 hours. Average hourly earnings at \$27.84, not seasonally adjusted, were down 24 cents, or -0.9% from the April 2013 hourly private sector pay figure of \$28.08. The resulting average **private sector** weekly pay was calculated at \$938.21, down \$5.28, or -0.6% over the year. The year-to-year change in the Consumer Price Index for All Urban Consumers (CPI-U, U.S. City Average, not seasonally adjusted) in April 2014 was 2.0%. Information for the manufacturing production workweek and earnings can be found in the table section of this release under the "Hours and Earnings" data category.

Labor Force Data (residential household survey)

Connecticut's unemployment rate was estimated at **6.9%** for April 2014. This is down one-tenth of a percentage point from March 2013, and down nine-tenths of a percentage point from the April 2013 unemployment rate of 7.8%. April's statewide civilian labor force (3,763, 0.2%) was higher again for the fourth month in a row, and is now slightly positive over the year (2,293, 0.1%). The unemployment rate in Connecticut has not been this low since it was 7.0% in January of 2009, in the midst of the financial crisis.

Unemployment: Based on the household survey, the number of unemployed, seasonally adjusted, declined by 2,023 (-1.6%) over the month to 128,481 in April 2014. The state's number of unemployed residents has declined by 17,302 (-11.9%) since April 2013. The United States unemployment rate was 6.3% in April, down four-tenths of a percentage point from the March 2014 rate (6.3%), and lower by one and two-tenths of a percentage point from the April 2013 rate, when it was calculated at 7.5%.

The April 2014 average weekly initial unemployment claims for first-time Connecticut filers (seasonally adjusted) increased over the month by 323 claims (7.9%) to 4,412, but were lower by 411 claims (-8.5%) from last April (4,823).

*The nonfarm employment estimate, derived from a survey of businesses, is a measure of jobs in the state; the unemployment rate, based on a household survey, is a measure of the work status of people who live in Connecticut. Overall, as the national and state economies recover, volatility in monthly numbers can be expected. Additionally, changes in methodology that culminated in March 2011 with the U.S. Department of Labor, Bureau of Labor Statistics assuming complete responsibility for estimating all states' monthly nonfarm job counts, have contributed to the month-to-month variability in the numbers. **Jobs estimates are best understood in the context of their movement over several months rather than observed changes in a single month's estimate.***

Next Connecticut Labor Situation release: Thursday, June 19, 2014 (May 2014 data)

Contact: Communications Office

(860) 263-6535

05-15-14

Labor market information is available on the Internet at www.ctdol.state.ct.us/lmi
200 Folly Brook Boulevard, Wethersfield, CT 06109-1114 - www.ct.gov/dol

An Equal Opportunity/Affirmative Action Employer

NONFARM EMPLOYMENT

Jobs - by Place of Work

CONNECTICUT AND THE UNITED STATES - Seasonally Adjusted

	April 2014 P	March 2014 R	February 2014	January 2014	April 2013	Over Month Change	Over Month Rate	Over Year Change	Over Year Rate
CONNECTICUT	1,660,200	1,658,000	1,654,000	1,652,600	1,653,300	2,200	0.1%	6,900	0.4%
Total Private	1,425,800	1,424,000	1,420,800	1,417,500	1,415,000	1,800	0.1%	10,800	0.8%
Goods Producing Industries									
Mining	500	600	600	500	500	-100	-16.7%	0	0.0%
Construction	56,500	56,000	56,700	55,400	53,500	500	0.9%	3,000	5.6%
Manufacturing	161,900	162,100	161,700	163,800	164,500	-200	-0.1%	-2,600	-1.6%
Durable Goods	124,200	124,600	124,400	126,400	128,300	-400	-0.3%	-4,100	-3.2%
Nondurable Goods	37,700	37,500	37,300	37,400	36,200	200	0.5%	1,500	4.1%
Service Providing Industries									
Trade, Transportation & Utilities	301,300	300,500	298,400	298,400	298,900	800	0.3%	2,400	0.8%
Wholesale	64,000	64,100	64,200	63,900	63,300	-100	-0.2%	700	1.1%
Retail	183,400	183,700	181,900	181,900	183,900	-300	-0.2%	-500	-0.3%
Transp, Warehousing & Utilities	53,900	52,700	52,300	52,600	51,700	1,200	2.3%	2,200	4.3%
Information	31,600	31,700	31,500	31,400	31,800	-100	-0.3%	-200	-0.6%
Financial Activities	131,200	130,700	130,000	130,800	131,700	500	0.4%	-500	-0.4%
Finance & Insurance	112,000	111,600	111,000	111,700	112,800	400	0.4%	-800	-0.7%
Real Estate, Rental & Leasing	19,200	19,100	19,000	19,100	18,900	100	0.5%	300	1.6%
Professional & Business Services	202,900	203,500	204,800	202,900	203,700	-600	-0.3%	-800	-0.4%
Prof, Scientific & Tech Services	88,500	89,900	90,100	89,900	90,100	-1,400	-1.6%	-1,600	-1.8%
Management of Companies	29,300	29,400	29,300	29,400	29,100	-100	-0.3%	200	0.7%
Admn & Support & Waste Mgt Serv	85,100	84,200	85,400	83,600	84,500	900	1.1%	600	0.7%
Educational & Health Services	326,300	325,600	325,600	325,000	320,700	700	0.2%	5,600	1.7%
Educational Services	63,900	63,700	64,900	62,500	61,900	200	0.3%	2,000	3.2%
Health Care & Social Assistance	262,400	261,900	260,700	262,500	258,800	500	0.2%	3,600	1.4%
Leisure and Hospitality	151,800	151,100	149,500	148,000	147,400	700	0.5%	4,400	3.0%
Arts, Entertainment & Recreation	24,600	25,000	25,000	24,800	26,000	-400	-1.6%	-1,400	-5.4%
Accommodation & Food Services	127,200	126,100	124,500	123,200	121,400	1,100	0.9%	5,800	4.8%
Other Services	61,800	62,200	62,000	61,300	62,300	-400	-0.6%	-500	-0.8%
Government**	234,400	234,000	233,200	235,100	238,300	400	0.2%	-3,900	-1.6%
UNITED STATES	138,252,000	137,964,000	137,761,000	137,539,000	135,885,000	288,000	0.2%	2,367,000	1.7%

LABOR MARKET AREAS (LMA)

Labor Market Area employment estimates are made independently of Statewide estimates.

Seasonally Adjusted data	April 2014 P	March 2014 R	February 2014	January 2014	April 2013	Over Month Change	Over Month Rate	Over Year Change	Over Year Rate
Bridgeport-Stamford	417,300	415,800	413,300	413,000	410,100	1,500	0.4%	7,200	1.8%
Danbury	69,000	69,500	69,000	68,600	69,100	-500	-0.7%	-100	-0.1%
Hartford	550,500	550,900	547,300	552,000	547,800	-400	-0.1%	2,700	0.5%
New Haven	278,200	277,600	276,400	274,700	274,700	600	0.2%	3,500	1.3%
Norwich-New London	126,600	126,100	126,000	126,000	128,200	500	0.4%	-1,600	-1.2%
Waterbury	64,300	64,500	64,300	64,500	64,000	-200	-0.3%	300	0.5%
<i>Not Seasonally Adjusted data (Non-Classified Areas, State estimated not BLS)</i>									
Enfield	45,200	43,800	43,300	43,400	45,200	1,400	3.2%	0	0.0%
Torrington	36,300	35,500	35,400	35,900	36,100	800	2.3%	200	0.6%
Willimantic-Danielson	37,800	37,300	37,000	37,300	37,200	500	1.3%	600	1.6%

* Less than 0.05% ** Includes Native American tribal government employment

P = Preliminary

R = Revised

Starting with March, 2011, our monthly statewide and major LMA nonfarm job estimates have been taken over by the US Department of Labor Bureau of Labor Statistics. This is the final phase of transition in this program, which began in 2008. As a result of changes in the estimation procedures, you are likely to see more variability in month-to-month estimates of job counts. Caution should be used in interpreting any single month's estimate. The data are best interpreted to identify trends and cycles over several months and quarters. If you have any questions about these changes, please email us at: dol.lmi@ct.gov.

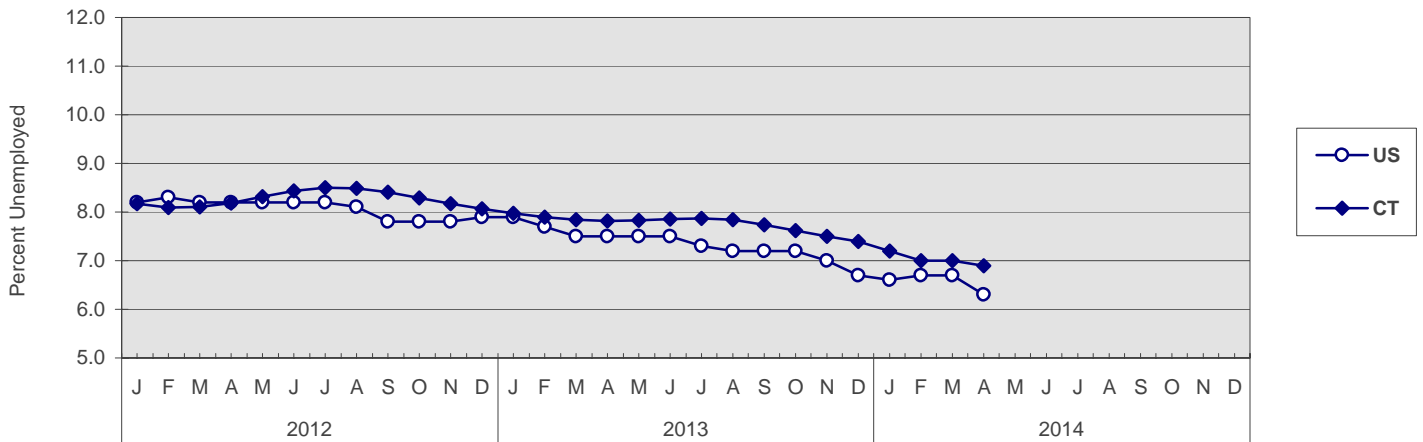
UNEMPLOYMENT

Persons Unemployed - by Place of Residence

CONNECTICUT AND THE UNITED STATES - Seasonally Adjusted

	April 2014 P		April 2013		Change		March 2014 R	
	Number	Rate	Number	Rate	Number	Points	Number	Rate
CONNECTICUT								
Unemployed	128,500	6.9	145,800	7.8	-17,300	-0.9	130,500	7.0
Labor Force	1,868,600		1,866,300		2,300		1,864,800	
UNITED STATES								
Unemployed	9,753,000	6.3	11,683,000	7.5	-1,930,000	-1.2	10,486,000	6.7
Labor Force	155,421,000		155,359,000		62,000		156,227,000	

U.S. AND CONNECTICUT UNEMPLOYMENT RATES - Seasonally Adjusted 2012 - 2014



LABOR MARKET AREAS - Not Seasonally Adjusted

	April 2014 P		April 2013		Change		March 2014 R	
	Number	Rate	Number	Rate	Number	Points	Number	Rate
Bridgeport-Stamford								
Danbury								
Enfield								
Hartford								
New Haven								
Norwich-New Britain								
Torrington								
Waterbury								
Willimantic-Danielson								
CONNECTICUT	122,700	6.6	137,800	7.4	-15,100	-0.8	137,500	7.4
UNITED STATES	9,079,000	5.9	11,014,000	7.1	-1,935,000	-1.2	10,537,000	6.8

Release of April 2014 sub-state labor force data is restricted by the U.S. Bureau of Labor Statistics until Friday, May 16, 2014. An updated *Connecticut Labor Situation* with these data will be available on our website at that time at: <http://www1.ctdol.state.ct.us/lmi/laborsit.pdf>.

P = Preliminary

R = Revised

Labor force data included in this publication are developed in cooperation with the U.S. Department of Labor, Bureau of Labor Statistics.

UNEMPLOYMENT RATES

Not Seasonally Adjusted

LABOR MARKET AREAS

Release of April 2014 sub-state labor force data is restricted by the U.S. Bureau of Labor Statistics until Friday, May 16, 2014. An updated *Connecticut Labor Situation* with these data will be available on our website at that time at:
<http://www1.ctdol.state.ct.us/lmi/laborsit.pdf>.

HOURS AND EARNINGS

CONNECTICUT Statewide - Not Seasonally Adjusted

	Average Weekly Earnings				Average Weekly Hours				Average Hourly Earnings			
	Apr. 2014 P	Apr. 2013	Change over Yr.	Mar. 2013 R	Apr. 2014 P	Apr. 2013	Change over Yr.	Mar. 2013 R	Apr. 2014 P	Apr. 2013	Change over Yr.	Mar. 2013 R
Private Industry All Employees	\$938.21	\$943.49	-\$5.28	\$946.18	33.7	33.6	0.1	33.6	\$27.84	\$28.08	-\$0.24	\$28.16
Manufacturing*												
Production Workers	\$886.37	\$905.94	-\$19.57	\$894.24	41.4	40.9	0.5	41.4	\$21.41	\$22.15	-\$0.74	\$21.60

* Production worker data have been impacted by the loss of a large, high-paying manufacturer from the monthly sample.

P = Preliminary

R = Revised

Hours and earnings are also developed for the state's major industry sectors and Labor Market Areas. They can be found on our website at: www.ctdol.state.ct.us/lmi.

TRENDS

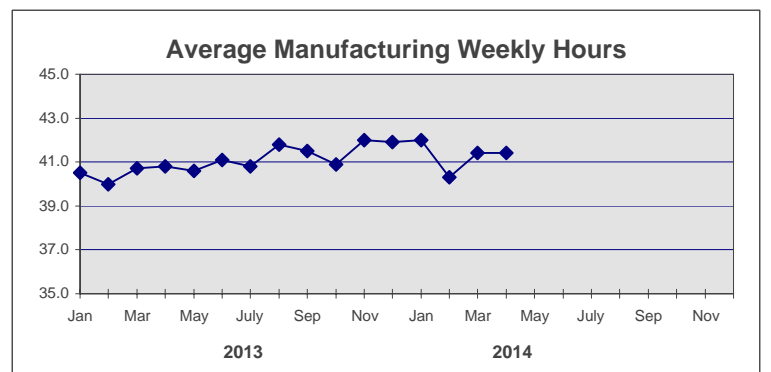
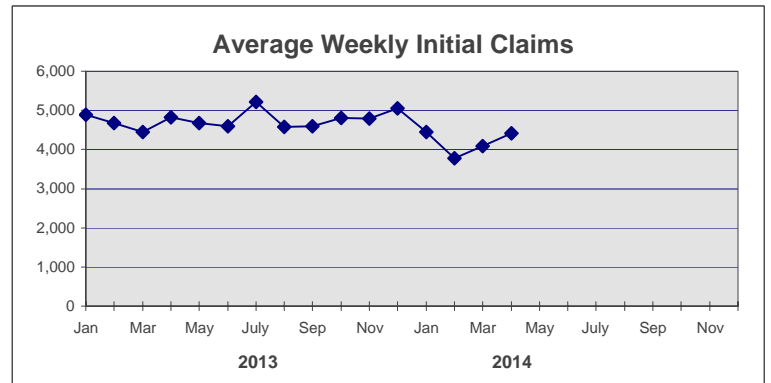
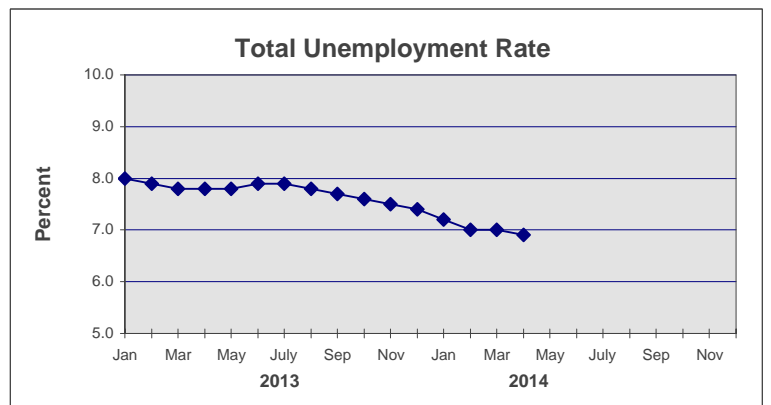
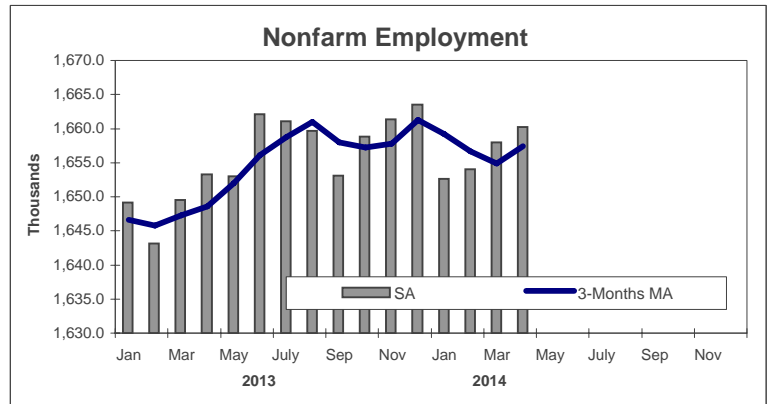
Seasonally Adjusted

	Nonfarm Employment (000s)	Total Unemployment Rate
2013		
Jan	1,649.2	8.0
Feb	1,643.1	7.9
Mar	1,649.5	7.8
Apr	1,653.3	7.8
May	1,653.0	7.8
Jun	1,662.1	7.9
July	1,661.1	7.9
Aug	1,659.7	7.8
Sep	1,653.1	7.7
Oct	1,658.8	7.6
Nov	1,661.4	7.5
Dec	1,663.5	7.4

2014		
Jan	1,652.6	7.2
Feb	1,654.0	7.0
Mar	1,658.0 R	7.0 R
Apr	1,660.2 P	6.9 P
May		
Jun		
July		
Aug		
Sep		
Oct		
Nov		
Dec		

	Avg Weekly Initial Claims	Avg Manufacturing Weekly Hours*
2013		
Jan	4,884	40.5
Feb	4,669	40.0
Mar	4,452	40.7
Apr	4,823	40.8
May	4,672	40.6
Jun	4,602	41.1
July	5,220	40.8
Aug	4,585	41.8
Sep	4,598	41.5
Oct	4,805	40.9
Nov	4,786	42.0
Dec	5,054	41.9

2014		
Jan	4,442	42.0
Feb	3,775	40.3
Mar	4,089	41.4 R
Apr	4,412	41.4 P
May		
Jun		
July		
Aug		
Sep		
Oct		
Nov		
Dec		



* Not seasonally adjusted

P = Preliminary

R = Revised

** Labor-management dispute