



LABOR SITUATION

Office of Research
Sharon M. Palmer, Commissioner

FOR IMMEDIATE RELEASE

October 2014 Data
CT Unemployment Rate = 6.4%
US Unemployment Rate = 5.8%

October nonfarm jobs extend gains; unemployment rate unchanged

WETHERSFIELD, November 20, 2014 – The Connecticut preliminary jobs estimate from the federal Bureau of Labor Statistics's (BLS) monthly establishment survey indicate the state added 3,600 jobs (0.21%, seasonally adjusted) in October 2014. This is the eighth monthly nonfarm job gain in 2014 and the tenth of the last twelve since October 2013. The state's nonfarm employment achieved another new recovery highpoint last month at 1,681,800 jobs and has now added 23,000 positions (1.39%) seasonally adjusted over the year.

Connecticut's unemployment rate, calculated from the household survey (Current Population Survey), was 6.4% in October 2014. This is unchanged from the September 2014 estimate, but down by one and two-tenths of a percentage point from the October 2013 unemployment rate of 7.6%. The state's unemployment rate has not been this low since November 2008. The number of unemployed in the state has fallen by 19,534 over the year to 121,575. In October, Connecticut's labor force experienced its largest increase in 2014 (10,675, 0.6%, considered statistically significant) and has now increased by 35,651 (1.9%) participants over the year.

"Connecticut's job market continues to steadily add jobs this year at the best pace since the recovery began and that growth seems to be drawing more people into the labor force," said Andy Condon, Director of the Office of Research. "Retail trade was especially strong this month, possibly reflecting an earlier buildup for the holiday season, although the government sector is experiencing continued declines."

Nonfarm Jobs (business establishment survey)

Connecticut preliminary nonfarm employment extended monthly job gains by adding 3,600 (0.21%) jobs in October to 1,681,800 (seasonally adjusted). October nonfarm job gains now total 23,000 (+1.39%) over the year. Connecticut has added 18,300 jobs (about 1,830 per month) through the first ten months of the year which is better than the 2013 pace of 13,700 through October on a seasonally adjusted basis. This is shaping up to be the best year of Connecticut's employment recovery so far, even with the large loss of 10,900 that started off the year in January.

The **private sector** added 4,900 positions (0.3%) in October, representing the ninth consecutive monthly gain. Over the year, Connecticut has now added 22,100 private sector jobs (1.6%, 2,210 monthly pace).

The four industry *supersector* job gainers in October were led by the **education and health services** (+2,400, +0.7%). The **education** (+1,100, +1.7%) and **health** (+1,300, +0.5%) components were both solid contributors. The **trade, transportation & utilities (TTU)** (+1,500, +0.5%) *supersector* was also adding jobs last month. **Retail trade** (+2,400, +1.3%) was the strongest segment, possibly indicating an earlier-than-normal holiday buildup. **TTU** remains the fastest growing *supersector* over the year (+8,100, +2.7%). **Leisure and hospitality** (+1,000, +0.7%) saw employment increasing again with continued activity coming from **accommodation and food services** (+700, +0.6%) which has been benefitting from the nice string of weather since spring and the recent gasoline price decline. The **professional, scientific, and technical** (+700, +0.3%) *supersector* also was adding positions led by **administrative services** (+800, +0.9%) where temporary employment is tallied.

Government (-1,300, -0.6%) led the five *supersectors* that lost jobs in the state in October. **Federal** (-100, -0.6%), **state** (-400, -0.6%) and **local** (-800, -0.5%) entities were all similarly lower percentagewise. The **financial activities** *supersector* (-400, -0.3%) also lost positions last month, with the **finance and insurance** (-300, -0.3%) component and the **real estate** (-100, -0.5%) segment both lower. Declines in the other three *supersectors* were small. The **manufacturing** *supersector* (-100, -0.1%) was just slightly lower as was the combined **construction and mining** (-100, -0.2%) *supersector* and the **information** *supersector* (-100, -0.3%). The **other services** *supersector* was unchanged in October.

Recession recovery: Connecticut has now recovered 87,900 positions, or 73.8% of the 119,100 seasonally adjusted **total nonfarm** jobs that were lost in the state during the March 2008 - February 2010 recessionary downturn. Connecticut's jobs recovery is now 56 months old and is averaging approximately 1,570 jobs per month overall since February 2010. The **private sector** has restored employment at a quicker pace and has now recovered 97,600 (87.1%) of the 112,000 private sector jobs that were lost during the same period (1,743 per month pace). At 1,681,800 overall nonfarm jobs for October 2014, the state needs to reach the 1,713,000 level to start an official nonfarm employment expansion. This will require an additional 31,200 jobs. A total of just 14,400 additional private sector positions are needed to have a fully recovered private sector. The **government supersector** has continued to lose net jobs (-9,700) throughout the overall nonfarm employment recovery.

Labor Market Areas (LMAs): The October 2014 preliminary nonfarm job numbers show that four of the six major Connecticut Labor Market Areas (Bureau of Labor Statistics-recognized LMAs) had job gains. Just one LMA posted a decline while the **Bridgeport-Stamford-Norwalk LMA** came in unchanged. For the first time in quite a while, the **Norwich-New London LMA** (1,100, 0.87%) posted back-to-back monthly gains of a thousand or better, including the best gain of all LMAs this month (in magnitude). The **Waterbury LMA** (600, 0.93%) put up the best showing in percentage terms for the month after being the only LMA to decline in September. The **New Haven LMA** (700, 0.3%) and the **Danbury LMA** (300, 0.4%) also were positive last month. The largest labor market in the state, the **Hartford LMA** (-600, -0.1%), was the only LMA to lose jobs in October 2014 after exhibiting the best LMA job gain in the prior month. The **Norwich-New London LMA** (100, 0.1%) has now turned slightly positive over the year. This now makes all Connecticut BLS-recognized LMAs positive over the year. *Note: The major Connecticut LMAs are estimated and seasonally adjusted independently from the statewide numbers by the BLS and cover about 90% of the nonfarm employment in the state, so they will not fully sum to the statewide total.*

Hours and Earnings: The **private sector** workweek, not seasonally adjusted, averaged 33.9 hours in October 2014, and is higher by two-tenths of an hour from the year-ago estimate of 33.7 hours. Average hourly earnings at \$28.33, not seasonally adjusted, were up 61 cents, or 2.2%, from the October 2013 hourly private sector pay figure of \$27.72. The resulting average **private sector** weekly pay was calculated at \$960.39, up \$26.23, or 2.8% over the year. All employee private sector wage estimates have been out-pacing inflation recently. The year-to-year change in the Consumer Price Index for All Urban Consumers (CPI-U, U.S. City Average, not seasonally adjusted) in October 2014 was 1.7%. Information for the manufacturing production workweek and earnings can be found in the table section of this release under the "Hours and Earnings" data category.

Labor Force Data (residential household survey)

Connecticut's unemployment rate was calculated at **6.4%** for October 2014 (seasonally adjusted). This is unchanged from September 2014, and down one and two-tenths of a percentage point from the October 2013 unemployment rate of 7.6%. The unemployment rate in Connecticut has not been this low since November of 2008.

Unemployment: Based on the household survey, the number of unemployed, seasonally adjusted, posted an increase of 1,771 (1.5%) over the month to 121,575 in October 2014. The number of unemployed residents has decreased by 19,534 (-13.8%, considered statistically significant) since October 2013. Connecticut's unchanged unemployment rate last month came about with the largest labor force increase this year (+10,675, +0.6%, also considered statistically significant) which reflects more residents being drawn to the labor market looking for work. Year-to-year labor force growth now measures +35,651 (+1.9%). Connecticut's civilian labor force has increased 8 of 10 months in 2014 after bottoming out in this recovery in December 2013 at 1,845,784. The United States unemployment rate was 5.8% in October, down one-tenth of a percentage point from the September 2014 rate of 5.9%, and lower by one and one-four tenths of a percentage point from the October 2013 rate when it was estimated at 7.2%.

As always, the sample size underlying labor force and unemployment data is very small and caution is advised in interpreting these trends.

The October 2014 average weekly initial unemployment claims for first-time Connecticut filers (seasonally adjusted) declined slightly over the month by 89 claims (-2.1%) to 4,101, and were lower by 704 claims (-14.7%) from last October 2013 (4,805).

*The nonfarm employment estimate, derived from a survey of businesses, is a measure of jobs in the state; the unemployment rate, based on a household survey, is a measure of the work status of people who live in Connecticut. Overall, as the national and state economies recover, volatility in monthly numbers can be expected. Additionally, changes in methodology that culminated in March 2011 with the U.S. Department of Labor, Bureau of Labor Statistics assuming complete responsibility for estimating all states' monthly nonfarm job counts, have contributed to the month-to-month variability in the numbers. **Jobs estimates are best understood in the context of their movement over several months rather than observed changes in a single month's estimate.***

Next Connecticut Labor Situation release: Thursday, December 18, 2014 (November 2014 data)

Contact: Communications Office

(860) 263-6535

11-20-14

Labor market information is available on the Internet at www.ctdol.state.ct.us/lmi
200 Folly Brook Boulevard, Wethersfield, CT 06109-1114 - www.ct.gov/dol
An Equal Opportunity/Affirmative Action Employer

NONFARM EMPLOYMENT

Jobs - by Place of Work

CONNECTICUT AND THE UNITED STATES - Seasonally Adjusted

	October 2014 P	September 2014 R	August 2014	July 2014	October 2013	Over Month Change	Over Month Rate	Over Year Change	Over Year Rate
CONNECTICUT	1,681,800	1,678,200	1,667,700	1,668,900	1,658,800	3,600	0.2%	23,000	1.4%
Total Private	1,446,000	1,441,100	1,432,000	1,431,900	1,423,900	4,900	0.3%	22,100	1.6%
Goods Producing Industries									
Mining	600	600	600	600	600	0	0.0%	0	0.0%
Construction	57,200	57,300	57,000	56,000	54,500	-100	-0.2%	2,700	5.0%
Manufacturing	163,300	163,400	163,900	162,700	163,400	-100	-0.1%	-100	-0.1%
Durable Goods	124,900	125,200	125,900	124,500	126,300	-300	-0.2%	-1,400	-1.1%
Nondurable Goods	38,400	38,200	38,000	38,200	37,100	200	0.5%	1,300	3.5%
Service Providing Industries									
Trade, Transportation & Utilities	308,300	306,800	304,200	303,000	300,200	1,500	0.5%	8,100	2.7%
Wholesale	64,800	66,100	65,500	65,600	63,400	-1,300	-2.0%	1,400	2.2%
Retail	189,000	186,600	184,700	183,300	184,300	2,400	1.3%	4,700	2.6%
Transp, Warehousing & Utilities	54,500	54,100	54,000	54,100	52,500	400	0.7%	2,000	3.8%
Information	31,500	31,600	31,400	31,500	31,600	-100	-0.3%	-100	-0.3%
Financial Activities	129,500	129,900	130,700	130,600	131,300	-400	-0.3%	-1,800	-1.4%
Finance & Insurance	110,600	110,900	111,500	111,500	112,300	-300	-0.3%	-1,700	-1.5%
Real Estate, Rental & Leasing	18,900	19,000	19,200	19,100	19,000	-100	-0.5%	-100	-0.5%
Professional & Business Services	207,500	206,800	205,100	207,100	205,500	700	0.3%	2,000	1.0%
Prof, Scientific & Tech Services	91,600	91,800	91,000	92,500	90,500	-200	-0.2%	1,100	1.2%
Management of Companies	29,000	28,900	28,700	28,900	29,400	100	0.3%	-400	-1.4%
Admn & Support & Waste Mgt Serv	86,900	86,100	85,400	85,700	85,600	800	0.9%	1,300	1.5%
Educational & Health Services	331,100	328,700	325,000	326,300	324,700	2,400	0.7%	6,400	2.0%
Educational Services	64,900	63,800	62,800	62,800	63,500	1,100	1.7%	1,400	2.2%
Health Care & Social Assistance	266,200	264,900	262,200	263,500	261,200	1,300	0.5%	5,000	1.9%
Leisure and Hospitality	154,500	153,500	150,900	151,400	150,400	1,000	0.7%	4,100	2.7%
Arts, Entertainment & Recreation	25,800	25,500	24,800	25,300	25,800	300	1.2%	0	0.0%
Accommodation & Food Services	128,700	128,000	126,100	126,100	124,600	700	0.5%	4,100	3.3%
Other Services	62,500	62,500	63,200	62,700	61,700	0	0.0%	800	1.3%
Government**	235,800	237,100	235,700	237,000	234,900	-1,300	-0.5%	900	0.4%
UNITED STATES	139,680,000	139,466,000	139,210,000	139,007,000	137,037,000	214,000	0.2%	2,643,000	1.9%

LABOR MARKET AREAS (LMA)

Labor Market Area employment estimates are made independently of Statewide estimates.

Seasonally Adjusted data	October 2014 P	September 2014 R	August 2014	July 2014	October 2013	Over Month Change	Over Month Rate	Over Year Change	Over Year Rate
Bridgeport-Stamford	420,800	420,800	419,400	420,100	411,300	0	0.0%	9,500	2.3%
Danbury	70,300	70,000	69,500	69,800	69,100	300	0.4%	1,200	1.7%
Hartford	554,900	555,500	553,900	552,900	550,800	-600	-0.1%	4,100	0.7%
New Haven	279,000	278,300	278,100	279,600	274,100	700	0.3%	4,900	1.8%
Norwich-New London	127,500	126,400	125,400	125,200	127,400	1,100	0.9%	100	0.1%
Waterbury	65,300	64,700	65,000	64,800	64,900	600	0.9%	400	0.6%
<i>Not Seasonally Adjusted data (Non-Classified Areas, State estimated not BLS)</i>									
Enfield	44,800	44,700	43,800	43,700	44,100	100	0.2%	700	1.6%
Torrington	37,200	37,100	36,700	36,900	36,900	100	0.3%	300	0.8%
Willimantic-Danielson	38,400	38,100	37,500	37,700	38,100	300	0.8%	300	0.8%

* Less than 0.05% ** Includes Native American tribal government employment

P = Preliminary

R = Revised

Starting with March, 2011, our monthly statewide and major LMA nonfarm job estimates have been taken over by the US Department of Labor Bureau of Labor Statistics. This is the final phase of transition in this program, which began in 2008. As a result of changes in the estimation procedures, you are likely to see more variability in month-to-month estimates of job counts. Caution should be used in interpreting any single month's estimate. The data are best interpreted to identify trends and cycles over several months and quarters. If you have any questions about these changes, please email us at: dol.lmi@ct.gov.

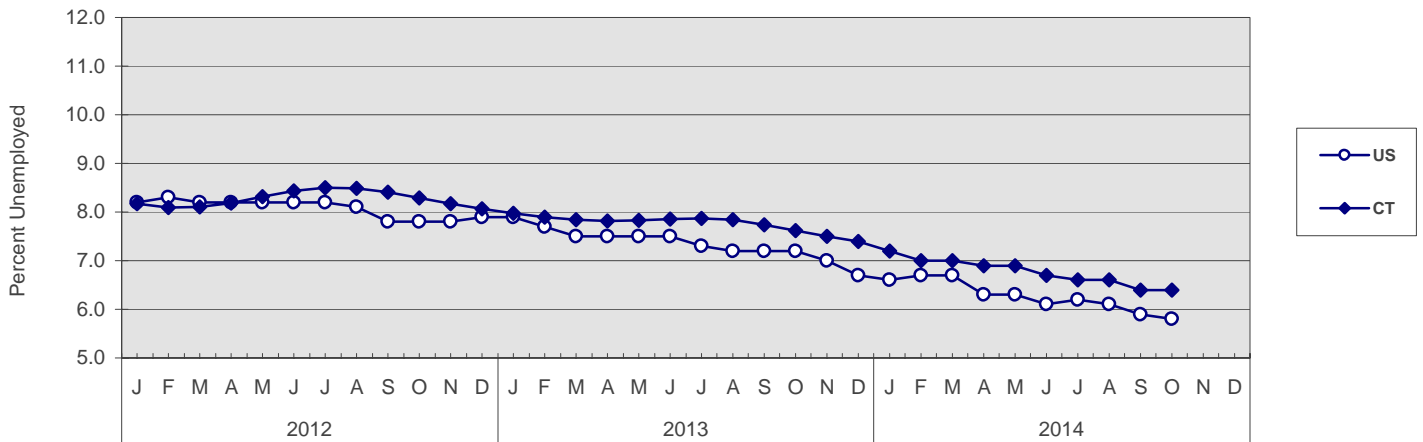
UNEMPLOYMENT

Persons Unemployed - by Place of Residence

CONNECTICUT AND THE UNITED STATES - Seasonally Adjusted

	Oct. 2014 P		Oct. 2013		Change		Sep. 2014 R	
	Number	Rate	Number	Rate	Number	Points	Number	Rate
CONNECTICUT								
Unemployed	121,600	6.4	141,100	7.6	-19,500	-1.2	119,800	6.4
Labor Force	1,886,300		1,850,600		35,700		1,875,600	
UNITED STATES								
Unemployed	8,995,000	5.8	11,140,000	7.2	-2,145,000	-1.4	9,262,000	5.9
Labor Force	156,278,000		154,625,000		1,653,000		155,862,000	

U.S. AND CONNECTICUT UNEMPLOYMENT RATES - Seasonally Adjusted 2012 - 2014



LABOR MARKET AREAS - Not Seasonally Adjusted

	Oct. 2014 P		Oct. 2013		Change		Sep. 2014 R	
	Number	Rate	Number	Rate	Number	Points	Number	Rate
Bridgeport-Stamford								
Danbury								
Enfield								
Hartford								
New Haven								
Norwich-New Britain								
Torrington								
Waterbury								
Willimantic-Danielson								
CONNECTICUT	119,200	6.3	137,000	7.4	-17,800	-1.1	110,600	5.9
UNITED STATES	8,680,000	5.5	10,773,000	7.0	-2,093,000	-1.5	8,962,000	5.7

Release of the October 2014 sub-state labor force data is restricted by the U.S. Bureau of Labor Statistics until Friday, November 21, 2014.

An updated *Connecticut Labor Situation* with these data will be available on our website at that time at:

<http://www1.ctdol.state.ct.us/lmi/laborsit.pdf>

P = Preliminary

R = Revised

Labor force data included in this publication are developed in cooperation with the U.S. Department of Labor, Bureau of Labor Statistics.

UNEMPLOYMENT RATES

Not Seasonally Adjusted

LABOR MARKET AREAS

Release of the October 2014 sub-state labor force data is restricted by the U.S. Bureau of Labor Statistics until Friday, November 21, 2014.

An updated *Connecticut Labor Situation* with these data will be available on our website at that time at:

<http://www1.ctdol.state.ct.us/lmi/laborsit.pdf>.

HOURS AND EARNINGS

CONNECTICUT Statewide - Not Seasonally Adjusted

	Average Weekly Earnings				Average Weekly Hours				Average Hourly Earnings			
	Oct. 2014 P	Oct. 2013	Change over Yr.	Sep. 2014 R	Oct. 2014 P	Oct. 2013	Change over Yr.	Sep. 2014 R	Oct. 2014 P	Oct. 2013	Change over Yr.	Sep. 2014 R
Private Industry All Employees	\$960.39	\$934.16	\$26.23	\$958.35	33.9	33.7	0.2	33.9	\$28.33	\$27.72	\$0.61	\$28.27
Manufacturing*												
Production Workers	\$939.39	\$874.85	\$64.54	\$927.30	40.3	40.9	-0.6	40.6	\$23.31	\$21.39	\$1.92	\$22.84

* Production worker data have been impacted by the loss of a large, high-paying manufacturer from the monthly sample.

P = Preliminary

R = Revised

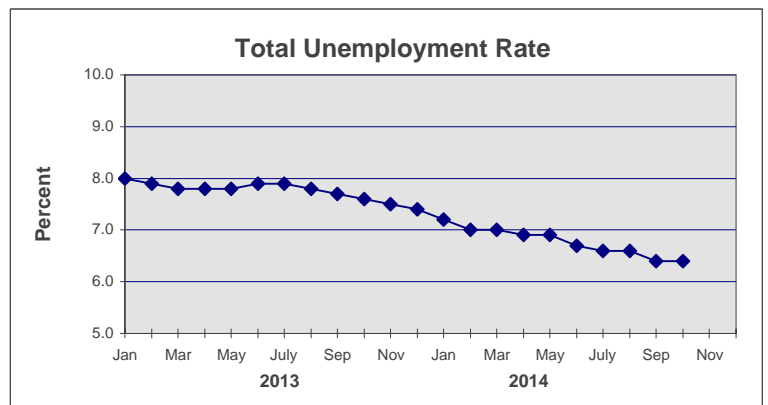
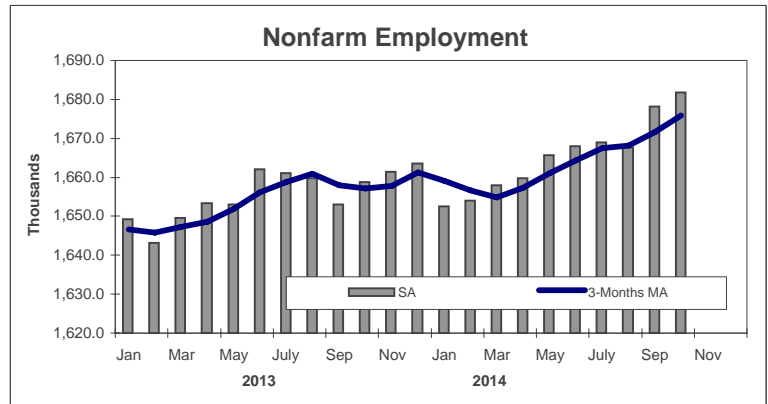
Hours and earnings are also developed for the state's major industry sectors and Labor Market Areas. They can be found on our website at: www.ctdol.state.ct.us/lmi.

TRENDS

Seasonally Adjusted

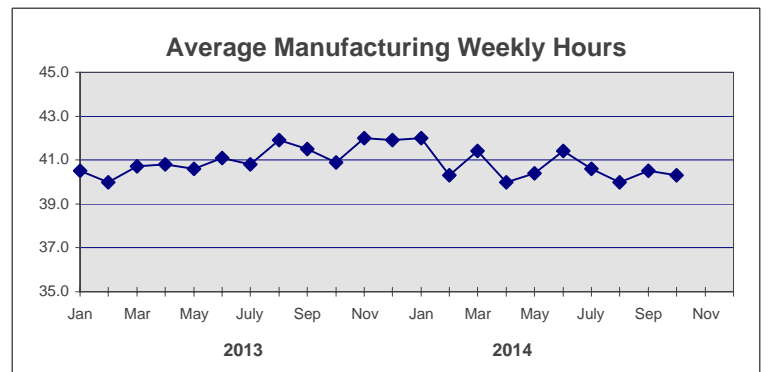
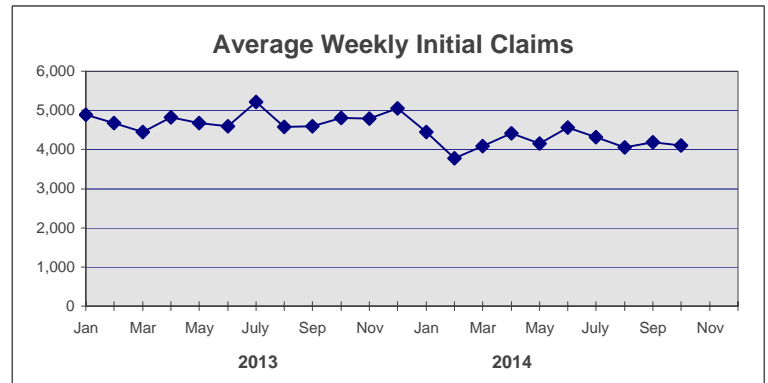
	Nonfarm Employment (000s)	Total Unemployment Rate
2013		
Jan	1,649.2	8.0
Feb	1,643.1	7.9
Mar	1,649.5	7.8
Apr	1,653.3	7.8
May	1,653.0	7.8
Jun	1,662.1	7.9
July	1,661.1	7.9
Aug	1,659.7	7.8
Sep	1,653.1	7.7
Oct	1,658.8	7.6
Nov	1,661.4	7.5
Dec	1,663.5	7.4

2014		
Jan	1,652.6	7.2
Feb	1,654.0	7.0
Mar	1,658.0	7.0
Apr	1,659.7	6.9
May	1,665.7	6.9
Jun	1,667.9	6.7
July	1,668.9	6.6
Aug	1,667.7	6.6
Sep	1,678.2 R	6.4 R
Oct	1,681.8 P	6.4 P
Nov		
Dec		



	Avg Weekly Initial Claims	Avg Manufacturing Weekly Hours*
2013		
Jan	4,884	40.5
Feb	4,669	40.0
Mar	4,452	40.7
Apr	4,823	40.8
May	4,672	40.6
Jun	4,602	41.1
July	5,220	40.8
Aug	4,585	41.9
Sep	4,598	41.5
Oct	4,805	40.9
Nov	4,786	42.0
Dec	5,054	41.9

2014		
Jan	4,442	42.0
Feb	3,775	40.3
Mar	4,089	41.4
Apr	4,412	40.0
May	4,150	40.4
Jun	4,556	41.4
July	4,311	40.6
Aug	4,052	40.0
Sep	4,190	40.5 R
Oct	4,101	40.3 P
Nov		
Dec		



* Not seasonally adjusted

P = Preliminary

R = Revised

** Labor-management dispute