



LABOR SITUATION

Office of Research
Sharon M. Palmer, Commissioner

FOR IMMEDIATE RELEASE

March 2014 Data
CT Unemployment Rate = 7.0%
US Unemployment Rate = 6.7%

March nonfarm jobs increase 4,900, unemployment rate steady at 7.0%

WETHERSFIELD, April 17, 2014 – Connecticut added 4,900 total nonfarm jobs (0.3%) in March, further restoring positions lost in the extreme January deep freeze. The state has now added 9,400 jobs (0.6%) over the year. The March increase was enhanced by February's upwardly revised increase (1,400, 0.1%) that was 600 jobs higher than originally reported. The state's nonfarm employment growth rate appears to be returning to the moderate expansion pace experienced before the winter chill took hold at the start of the year.

The unemployment rate in the state for March was 7.0%, unchanged from February 2014, but down from the 7.8% rate determined a year ago. The statewide labor force estimate grew again in March (7,012, 0.4%), mostly on increased residential employment. The number of unemployed residents in the state increased slightly (396, 0.3%) in March 2014, but is down significantly (-15,918, -10.9%) since a year ago. This month's unchanged rate of 7.0% ends a string of seven monthly declines in a row going back to July 2013 when the rate was 7.9%.

"March showed some solid signs of a return to previous job growth trends," said Andy Condon, Director of the Office of Research. "These include the third month in a row of an expanding labor force and employment/population ratio, growing manufacturing employment, and positive movements in private-sector hours and earnings. Recovery trend employment growth appears to be returning following the volatile winter."

Nonfarm Jobs (business establishment survey)

Preliminary nonfarm employment estimates for March show a strong 4,900 job gain (0.3%) which is helping Connecticut return to the moderate nonfarm employment growth trend that was apparent at the end of 2013. Since March 2013, the state has added 9,400 jobs (0.6%) for a total nonfarm employment level of 1,658,900. March's monthly employment level has ascended through its three-month moving average, which is used to address monthly volatility.

Private-sector job growth in March (4,100, 0.3%) also added more jobs over-the-year (13,500, 1.0%) than total nonfarm employment. Government *supersectors* (800, 0.3%) added employment this March as well, but have remained a constraint on overall employment gains over the year (-4,100, -1.7%) and throughout the recovery. An additional 11,500 government *supersector* jobs have been lost since the recovery started in February 2010 (tribal casino employment on reservations is classified in local government and accounts for some of the weakness).

Seven industry *supersectors* gained jobs in March, while two *supersectors* were lower, and **education and health services** was unchanged. The seven growing *supersectors* in March were led by the **leisure and hospitality** (2,300, 1.5%) *supersector*. There was very strong job growth from the **restaurants and hotels** component (2,200, 1.8%). **Trade, transportation, and utilities** (2,000, 0.7%) also rebounded, with **retail trade** (1,700, 0.9%) providing much of the increase. Again, the **government** *supersector* (800, 0.3%) added positions in March, led higher by **state government** (700, 1.1%). **Financial activities** (700, 0.5%) posted an increase with both **finance and insurance** (600, 0.5%) and **real estate** (100, 0.5%) contributing to the gain. **Manufacturing** entities were higher this month (400, 0.2%) as **durables** (200, 0.2%) and **non-durables** (200, 0.5%) production sectors both contributed. Smaller job gains came from the **other services** (200, 0.3%) and the **information** (100, 0.3%) *supersectors*.

The two job losing *supersectors* were **professional and business services** (-900, -0.4%) and the combined **construction and mining** (-700, -1.2%) *supersector*. **Construction and mining** had held up pretty well in the January-February freeze, but was lower this month.

Recession recovery: Connecticut has regained 65,000 positions, or 54.6% of the 119,100 seasonally adjusted **total nonfarm** jobs that were lost in the state during the March 2008 - February 2010 employment recession. Connecticut's jobs recovery is now 49 months old and is averaging approximately 1,327 jobs per month overall since February 2010. The core **private sector** has recovered at a faster pace and has now gotten back 76,500 (68.3%, 1,561 per month) of the 112,000 private jobs that were lost during the same downturn. Now at 1,658,900 nonfarm jobs for March, the state needs to reach the 1,713,000 level to start a true nonfarm employment expansion. This will require an additional 54,100 jobs going forward.

Labor Market Areas (LMAs): March 2014 preliminary estimates show five of the six major Connecticut Labor Market Areas (Bureau of Labor Statistics recognized LMAs) posted nonfarm job gains, while the **Norwich-New London LMA** was just slightly lower (-100, -0.1%). **Hartford** (3,900, 0.7%), the largest LMA, led all in job growth magnitude in March after posting a large job loss last month. The **Bridgeport-Stamford-Norwalk LMA** (1,900, 0.5%) also was positive and the **New Haven LMA** (1,300, 0.5%) added jobs as well. The **Danbury LMA** (500, 0.7%) led just barely in percentage terms, and the **Waterbury LMA** (200, 0.3%) was higher as well. The **Norwich-New London LMA** continues to be the only BLS-recognized LMA to lose jobs over the year (-2,200, -1.7%).
Note: The major Connecticut LMAs are estimated and seasonally adjusted independently from the statewide numbers by the BLS and cover about 90% of the nonfarm employment in the state, so they will not fully sum to the statewide total.

Hours and Earnings: The **private sector** workweek, not seasonally adjusted, averaged 33.6 hours in March 2014, up four-tenths of an hour from the year ago March 2013 figure of 33.2 hours. Average hourly earnings at \$28.06, not seasonally adjusted, were up five cents, or 0.2% from the March 2013 hourly private sector pay estimate (\$28.01). The resulting average **private sector** weekly pay was calculated at \$942.82, up \$12.89, or 1.4% over the year. The year-over-year gain in private sector hourly pay, weekly hours worked, and average weekly pay is a very positive development this month. The year-to-year change in the Consumer Price Index for All Urban Consumers (CPI-U, U.S. City Average, not seasonally adjusted) in March 2014 was 1.5%. Information for the manufacturing production workweek and earnings can be found in the table section of this release under the "Hours and Earnings" data category.

Labor Force Data (residential household survey)

Connecticut's unemployment rate was estimated at **7.0%** for March 2014. This is unchanged from February, but down eight-tenths of a percentage point from the March 2013 unemployment rate of 7.8%. This month's unchanged unemployment rate of 7.0% ends a string of seven monthly declines in a row since July 2013 when the rate was 7.9%. March's statewide civilian labor force (7,012, 0.4%) grew again for the third month in a row. The unemployment rate in Connecticut has not been this low since it was 7.0% in January of 2009.

Unemployment: Based on the household survey, the number of unemployed, seasonally adjusted, slightly increased by 396 (0.3%) over the month to 130,555 in March 2014. The state's number of unemployed residents has declined by 15,918 (-10.9%) since March 2013. The March United States unemployment rate was 6.7%, unchanged from the February 2014 rate (6.7%), and lower by eight-tenths of a percentage point from the March 2013 rate, when it was estimated at 7.5%.

The March 2014 average weekly initial unemployment claims for first-time Connecticut filers (seasonally adjusted) increased over the month by 314 claims (8.3%) to 4,089, but were lower by 363 claims (-8.2%) from last March (4,452).

Release of March 2014 sub-state labor force data is restricted by the U.S. Bureau of Labor Statistics until Friday, April 18, 2013. However, state offices will be closed that day for Good Friday observances. Data will be available Monday, April 21, 2014. An updated **Connecticut Labor Situation** with these data will be available on our website at that time at:
<http://www1.ctdol.state.ct.us/lmi/laborsit.pdf>.

*The nonfarm employment estimate, derived from a survey of businesses, is a measure of jobs in the state; the unemployment rate, based on a household survey, is a measure of the work status of people who live in Connecticut. Overall, as the national and state economies recover, volatility in monthly numbers can be expected. Additionally, changes in methodology that culminated in March 2011 with the U.S. Department of Labor, Bureau of Labor Statistics assuming complete responsibility for estimating all states' monthly nonfarm job counts, have contributed to the month-to-month variability in the numbers. **Jobs estimates are best understood in the context of their movement over several months rather than observed changes in a single month's estimate.***

Next Connecticut Labor Situation release: Thursday, May 15, 2014 (April 2014 data)

Contact: Communications Office

(860) 263-6535

04-17-14

Labor market information is available on the Internet at www.ctdol.state.ct.us/lmi
200 Folly Brook Boulevard, Wethersfield, CT 06109-1114 - www.ct.gov/dol
An Equal Opportunity/Affirmative Action Employer

NONFARM EMPLOYMENT

Jobs - by Place of Work

CONNECTICUT AND THE UNITED STATES - Seasonally Adjusted

	March 2014 P	February 2014 R	January 2014	December 2013	March 2013	Over Month Change	Over Month Rate	Over Year Change	Over Year Rate
CONNECTICUT	1,658,900	1,654,000	1,652,600	1,663,500	1,649,500	4,900	0.3%	9,400	0.6%
Total Private	1,424,900	1,420,800	1,417,500	1,427,900	1,411,400	4,100	0.3%	13,500	1.0%
Goods Producing Industries									
Mining	600	600	500	600	600	0	0.0%	0	0.0%
Construction	56,000	56,700	55,400	55,400	53,200	-700	-1.2%	2,800	5.3%
Manufacturing	162,100	161,700	163,800	162,300	164,400	400	0.2%	-2,300	-1.4%
Durable Goods	124,600	124,400	126,400	125,200	128,100	200	0.2%	-3,500	-2.7%
Nondurable Goods	37,500	37,300	37,400	37,100	36,300	200	0.5%	1,200	3.3%
Service Providing Industries									
Trade, Transportation & Utilities	300,400	298,400	298,400	301,900	297,300	2,000	0.7%	3,100	1.0%
Wholesale	64,100	64,200	63,900	63,300	63,100	-100	-0.2%	1,000	1.6%
Retail	183,600	181,900	181,900	185,500	182,700	1,700	0.9%	900	0.5%
Transp, Warehousing & Utilities	52,700	52,300	52,600	53,100	51,500	400	0.8%	1,200	2.3%
Information	31,600	31,500	31,400	31,300	32,100	100	0.3%	-500	-1.6%
Financial Activities	130,700	130,000	130,800	132,300	131,500	700	0.5%	-800	-0.6%
Finance & Insurance	111,600	111,000	111,700	113,000	112,600	600	0.5%	-1,000	-0.9%
Real Estate, Rental & Leasing	19,100	19,000	19,100	19,300	18,900	100	0.5%	200	1.1%
Professional & Business Services	203,900	204,800	202,900	205,500	203,300	-900	-0.4%	600	0.3%
Prof, Scientific & Tech Services	89,900	90,100	89,900	90,900	90,000	-200	-0.2%	-100	-0.1%
Management of Companies	29,400	29,300	29,400	29,200	29,000	100	0.3%	400	1.4%
Admn & Support & Waste Mgt Serv	84,600	85,400	83,600	85,400	84,300	-800	-0.9%	300	0.4%
Educational & Health Services	325,600	325,600	325,000	326,300	320,200	0	0.0%	5,400	1.7%
Educational Services	63,400	64,900	62,500	63,700	62,000	-1,500	-2.3%	1,400	2.3%
Health Care & Social Assistance	262,200	260,700	262,500	262,600	258,200	1,500	0.6%	4,000	1.5%
Leisure and Hospitality	151,800	149,500	148,000	150,600	146,300	2,300	1.5%	5,500	3.8%
Arts, Entertainment & Recreation	25,100	25,000	24,800	25,500	25,800	100	0.4%	-700	-2.7%
Accommodation & Food Services	126,700	124,500	123,200	125,100	120,500	2,200	1.8%	6,200	5.1%
Other Services	62,200	62,000	61,300	61,700	62,500	200	0.3%	-300	-0.5%
Government**	234,000	233,200	235,100	235,600	238,100	800	0.3%	-4,100	-1.7%
UNITED STATES	137,928,000	137,736,000	137,539,000	137,395,000	135,682,000	192,000	0.1%	2,246,000	1.7%

LABOR MARKET AREAS (LMA)

Labor Market Area employment estimates are made independently of Statewide estimates.

Seasonally Adjusted data	March 2014 P	February 2014 R	January 2014	December 2013	March 2013	Over Month Change	Over Month Rate	Over Year Change	Over Year Rate
Bridgeport-Stamford	415,200	413,300	413,000	414,900	408,900	1,900	0.5%	6,300	1.5%
Danbury	69,500	69,000	68,600	69,700	68,900	500	0.7%	600	0.9%
Hartford	551,200	547,300	552,000	552,000	547,700	3,900	0.7%	3,500	0.6%
New Haven	277,700	276,400	274,700	276,200	273,100	1,300	0.5%	4,600	1.7%
Norwich-New London	125,900	126,000	126,000	127,000	128,100	-100	-0.1%	-2,200	-1.7%
Waterbury	64,500	64,300	64,500	65,300	63,900	200	0.3%	600	0.9%
<i>Not Seasonally Adjusted data (Non-Classified Areas, State estimated not BLS)</i>									
Enfield	43,700	43,300	43,400	44,200	43,600	400	0.9%	100	0.2%
Torrington	35,500	35,400	35,900	36,900	35,200	100	0.3%	300	0.9%
Willimantic-Danielson	37,300	37,000	37,300	37,900	36,600	300	0.8%	700	1.9%

* Less than 0.05% ** Includes Native American tribal government employment

P = Preliminary

R = Revised

Starting with March, 2011, our monthly statewide and major LMA nonfarm job estimates have been taken over by the US Department of Labor Bureau of Labor Statistics. This is the final phase of transition in this program, which began in 2008. As a result of changes in the estimation procedures, you are likely to see more variability in month-to-month estimates of job counts. Caution should be used in interpreting any single month's estimate. The data are best interpreted to identify trends and cycles over several months and quarters. If you have any questions about these changes, please email us at: dol.lmi@ct.gov.

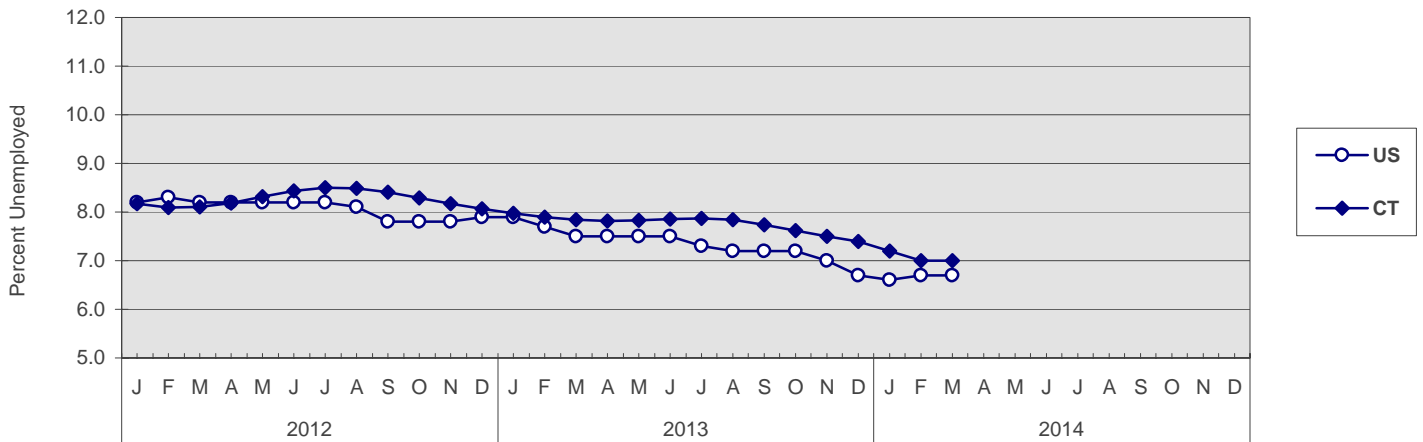
UNEMPLOYMENT

Persons Unemployed - by Place of Residence

CONNECTICUT AND THE UNITED STATES - Seasonally Adjusted

	March 2014 P		March 2013		Change		February 2014 R	
	Number	Rate	Number	Rate	Number	Points	Number	Rate
CONNECTICUT								
Unemployed	130,600	7.0	146,500	7.8	-15,900	-0.8	130,200	7.0
Labor Force	1,864,900		1,868,100		-3,200		1,857,900	
UNITED STATES								
Unemployed	10,486,000	6.7	11,706,000	7.5	-1,220,000	-0.8	10,459,000	6.7
Labor Force	156,227,000		155,099,000		1,128,000		155,724,000	

U.S. AND CONNECTICUT UNEMPLOYMENT RATES - Seasonally Adjusted 2012 - 2014



LABOR MARKET AREAS - Not Seasonally Adjusted

	March 2014 P		March 2013		Change		February 2014 R	
	Number	Rate	Number	Rate	Number	Points	Number	Rate

Release of March 2014 sub-state labor force data is restricted by the U.S. Bureau of Labor Statistics until Friday, April 18, 2013. However, state offices will be closed that day for Good Friday observances. Data will be available Monday, April 21, 2014.

An updated *Connecticut Labor Situation* with these data will be available on our website at that time at:

<http://www1.ctdol.state.ct.us/lmi/laborsit.pdf>.

CONNECTICUT	137,600	7.4	147,100	7.9	-9,500	-0.5	137,300	7.4
UNITED STATES	10,537,000	6.8	11,815,000	7.6	-1,278,000	-0.8	10,893,000	7.0

P = Preliminary

R = Revised

Labor force data included in this publication are developed in cooperation with the U.S. Department of Labor, Bureau of Labor Statistics.

UNEMPLOYMENT RATES

Not Seasonally Adjusted

LABOR MARKET AREAS

Release of March 2014 sub-state labor force data is restricted by the U.S. Bureau of Labor Statistics until Friday, April 18, 2013. However, state offices will be closed that day for Good Friday observances. Data will be available Monday, April 21, 2014. An updated *Connecticut Labor Situation* with these data will be available on our website at that time at: <http://www1.ctdol.state.ct.us/lmi/laborsit.pdf>.

HOURS AND EARNINGS

CONNECTICUT Statewide - Not Seasonally Adjusted

	Average Weekly Earnings				Average Weekly Hours				Average Hourly Earnings			
	Mar. 2014 P	Mar. 2013	Change over Yr.	Feb. 2013 R	Mar. 2014 P	Mar. 2013	Change over Yr.	Feb. 2013 R	Mar. 2014 P	Mar. 2013	Change over Yr.	Feb. 2013 R
Private Industry All Employees	\$942.82	\$929.93	\$12.89	\$931.52	33.6	33.2	0.4	32.8	\$28.06	\$28.01	\$0.05	\$28.40
Manufacturing* Production Workers	\$893.41	\$906.80	-\$13.39	\$880.15	41.4	40.7	0.7	40.3	\$21.58	\$22.28	-\$0.70	\$21.84

* Production worker data have been impacted by the loss of a large, high-paying manufacturer from the monthly sample.

P = Preliminary

R = Revised

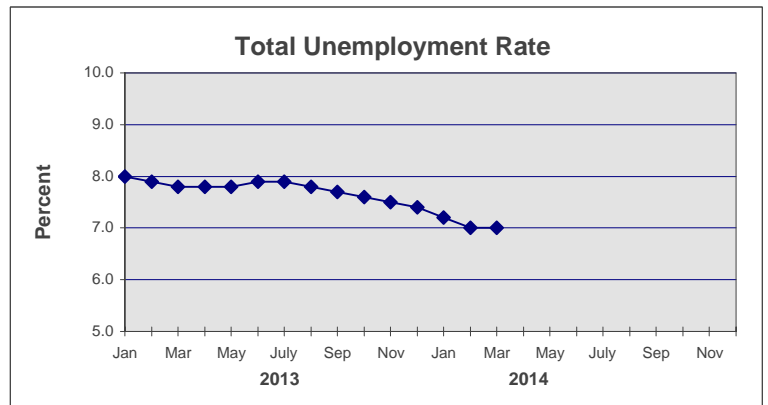
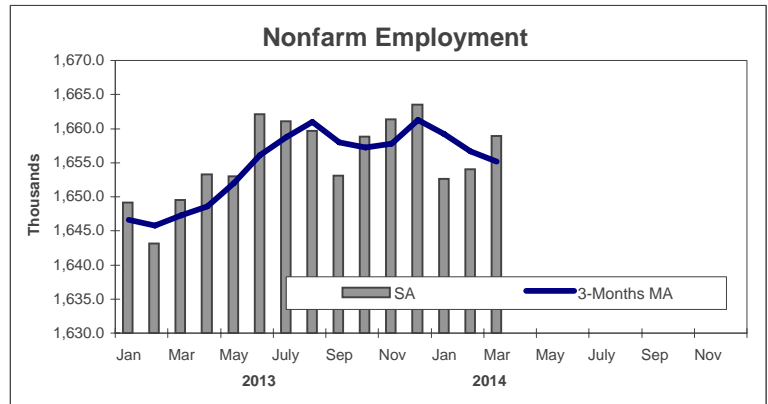
Hours and earnings are also developed for the state's major industry sectors and Labor Market Areas. They can be found on our website at: www.ctdol.state.ct.us/lmi.

TRENDS

Seasonally Adjusted

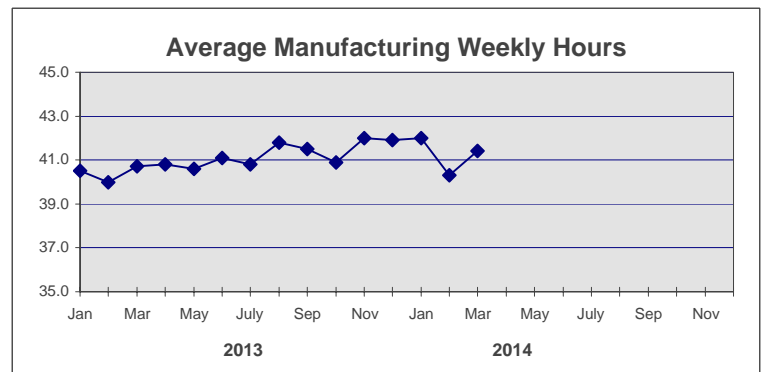
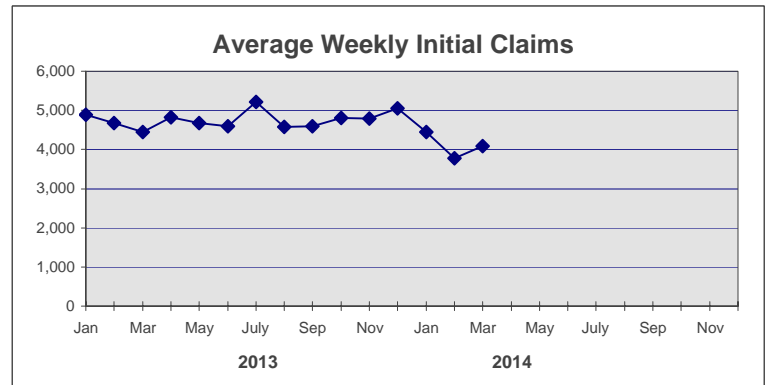
	Nonfarm Employment (000s)	Total Unemployment Rate
2013		
Jan	1,649.2	8.0
Feb	1,643.1	7.9
Mar	1,649.5	7.8
Apr	1,653.3	7.8
May	1,653.0	7.8
Jun	1,662.1	7.9
July	1,661.1	7.9
Aug	1,659.7	7.8
Sep	1,653.1	7.7
Oct	1,658.8	7.6
Nov	1,661.4	7.5
Dec	1,663.5	7.4

2014		
Jan	1,652.6	7.2
Feb	1,654.0 R	7.0 R
Mar	1,658.9 P	7.0 P
Apr		
May		
Jun		
July		
Aug		
Sep		
Oct		
Nov		
Dec		



	Avg Weekly Initial Claims	Avg Manufacturing Weekly Hours*
2013		
Jan	4,884	40.5
Feb	4,669	40.0
Mar	4,452	40.7
Apr	4,823	40.8
May	4,672	40.6
Jun	4,602	41.1
July	5,220	40.8
Aug	4,585	41.8
Sep	4,598	41.5
Oct	4,805	40.9
Nov	4,786	42.0
Dec	5,054	41.9

2014		
Jan	4,442	42.0
Feb	3,775	40.3 R
Mar	4,089	41.4 P
Apr		
May		
Jun		
July		
Aug		
Sep		
Oct		
Nov		
Dec		



* Not seasonally adjusted

P = Preliminary

R = Revised

** Labor-management dispute