



LABOR SITUATION

Office of Research
Sharon M. Palmer, Commissioner

FOR IMMEDIATE RELEASE

January 2014 Data
CT Unemployment Rate = 7.2%
US Unemployment Rate = 6.6%

Jobs decline 10,400, unemployment rate falls to 7.2%, 2013 job numbers revised upward

This release of the Connecticut Labor Situation contains nonfarm employment, hours and earnings, and labor force data (including the unemployment rate) that have been revised as part of an annual benchmark revision process that follows methods and procedures established by the U.S. Bureau of Labor Statistics (BLS).

WETHERSFIELD, March 14, 2014 – After hitting a new employment recovery high in December (1,663,500), Connecticut's nonfarm employment dropped 10,400 positions (-0.6%, seasonally adjusted) to a level of 1,653,100 jobs in January 2014. Cold and snowy winter weather has slowed economic activities more than usual across the state and region in recent months and may have had an impact on January job statistics.

Notable upward revisions to 2013 nonfarm employment levels, especially in the fourth quarter of 2013, brought December's re-estimated employment 12,300 positions higher (+0.7%) than levels originally published. Connecticut experienced upward nonfarm employment revisions to every month in 2013 (seasonally adjusted, see Connecticut's benchmark revision reports, pages 4-6).

The on-going decline in Connecticut's unemployment rate continued into January 2014, dropping two-tenths of a percentage point to 7.2%, from the revised 7.4% rate estimated in December 2013. This is the sixth monthly unemployment rate decline in a row since reaching 7.9% in July 2013 (based on newly revised data, see page 6). The state's unemployment rate is now eight-tenths of a percentage point below a year ago (8.0%). The number of unemployed residents in the state has fallen over-the-year by 16,413 (-11.0%).

"Newly benchmarked employment statistics reaffirm the consistent job growth in the state that brought down the unemployment rate in 2013," said Andy Condon, Director of the Office of Research. "However, the steep decline in January payroll jobs remains a concern. If, as we suspect, January's decline was largely due to weather conditions we should see growth trends return in future months."

Nonfarm Jobs (business establishment survey)

January's seasonally adjusted total nonfarm job estimate fell by 10,400 (-0.6%) possibly due to severe winter weather in the region. Year-over-year job growth declined to 3,900 (0.2%, seasonally adjusted). January's decline followed a revised upward December estimate which reached the highest nonfarm employment level since the recovery began in February 2010.

Connecticut's private sector (-9,700, -0.7%) and the public government *supersector* (-700, -0.3%) were both lower in employment last month (seasonally adjusted). However, the private sector has added 9,500 net jobs (0.7%) since January 2013, while the government *supersector* (-5,600, -2.3%) job losses over the year continue to be a curb on overall nonfarm job growth.

Declines were seen in most industry *supersectors* in January as just two of the ten added positions. Notably, the **manufacturing** *supersector* (1,300, 0.8%) highlighted the advancing industries with a significant gain, while the **education and health services** *supersector* (200, 0.1%) added some jobs as well.

The eight declining industry *supersectors* were led lower by **trade, transportation, & utilities** (-3,200, -1.1%). **Retail trade** components (-3,800, -2.0%) were the main catalyst for this job decline as **wholesale trade** (600, 0.9%) was up and **transportation and utilities** was unchanged. The **leisure & hospitality** *supersector* (-2,900, -1.9%) also was down significantly in January. **Arts, entertainment, and recreation** (-600, -2.4%) and **accommodation and food services** (-2,300, -1.8%) were both lower bringing this *supersector* down. The **professional and business services** (-2,900, -1.4%) posted a similar loss, and showed significant weakness from **administrative and support services** (-2,300, -2.7%, where **temporary employment services** resides). A significant job loss also came from the **financial activities** (-1,800, -1.4%) *supersector* as a result of weakness

from **finance and insurance** (-1,600, -1.4%). Smaller *supersector* job losses over the month came from **government** (-700, -0.3%), **other services** (-200, -0.3%), **information** (-100, -0.3%), and the combined **construction and mining** (-100, -0.2%) industry *supersector*.

An alternative measure of job growth, **annual average nonfarm employment** (using 12 months of revised unadjusted rounded data) ended 2013 at 1,654,700 compared to 1,640,400 for 2012 (14,300 growth, 0.87%), 1,625,100 for 2011 (15,300 growth, 0.94%), and 1,608,000 for 2010 (17,100 growth, 1.06 %).

Recession recovery: Connecticut has recovered 59,200 positions, or 49.7% of the now 119,100 seasonally adjusted **total nonfarm** jobs that were lost in the state in the March 2008 - February 2010 employment recession. The prior nonfarm recessionary job loss was estimated at 121,200 but was revised slightly lower (-2,100) due to changing seasonal factors, a slight change in scope of industry coverage, and the updated benchmark. Connecticut's jobs recovery is now 47 months old and is averaging approximately 1,260 jobs per month overall since February 2010. The **private sector** has recovered much better and has now recouped 69,800 (62.3%, 1,485 per month) of the now 112,000 private jobs that were lost during the same recessionary period (formerly 114,000 on last year's benchmark). The public **government supersector** has continued to lose net positions (-10,600) even after the jobs recovery began in February 2010. This is causing a drag on the overall nonfarm jobs recovery. Now at 1,653,100 nonfarm jobs in January, the state needs to reach the 1,713,000 level to start a true employment expansion. This will require an additional 59,900 jobs.

Labor Market Areas (LMAs): For January 2014 preliminary estimates on the new benchmark, all of the six major Connecticut Labor Market Areas (Bureau of Labor Statistics recognized LMAs) posted job losses. The **New Haven LMA** (-2,000, -0.7%) experienced the largest job loss in magnitude while in percentage terms, the **Danbury LMA** (-1,000, -1.4%) was the biggest decliner. The **Bridgeport-Stamford-Norwalk LMA** (-1,300, -0.3%) was lower as was the **Waterbury LMA** (-900, -1.4%), the **Norwich-New London LMA** (-800, -0.6%), and the **Hartford LMA** (-300, -0.1%). Weather had a clear impact across all areas of the state. *Note: The major Connecticut LMAs are estimated and seasonally adjusted independently from the statewide numbers by the BLS and cover about 90% of the nonfarm employment in the state, so they will not fully sum to the statewide total.*

Hours and Earnings: The **private sector** workweek, not seasonally adjusted, averaged 33.2 hours in January 2014, unchanged from the year ago January 2013 figure. Average hourly earnings at \$27.77, not seasonally adjusted, were down 56 cents, or -2.0% from the January 2013 hourly private sector pay estimate. The resulting average **private sector** weekly pay was calculated at \$921.96, down \$18.60, or -2.0% over the year. The year-to-year change in the Consumer Price Index for All Urban Consumers (CPI-U, U.S. City Average) in January 2014 was 1.6%. Information for the manufacturing production workweek and earnings can be found in the table section of this release under the "Hours and Earnings" data category.

Labor Force Data (residential household survey)

Connecticut's unemployment rate was estimated at **7.2%** for January 2014. This is down two-tenths of a percentage point from December 2013, and down eight-tenths of a percentage point from the January 2013 unemployment rate of 8.0%. This is the sixth monthly decline in a row since measuring 7.9% in July 2013. In January there was growth in the civilian labor force (+6,598, 0.4%) over the month. The unemployment rate in Connecticut has not been this low since February 2009 when it was 7.4%; it was 7.0% in January of 2009.

Unemployment: Based on the household survey, the number of unemployed, seasonally adjusted, decreased by 3,399 (-2.5%) over the month to 133,014 in January 2014. The state's number of unemployed workers has declined by 16,413 (-11.0%) since January 2013. The January United States unemployment rate was 6.6%, down one-tenth of a percentage point from the December 2013 rate (6.7%), and lower by one and three-tenths of a percentage point from the January 2013 rate, when it was estimated at 7.9%.

Annual Average Unemployment Rates since the Recovery began (after annual processing)

2013 - 7.8%

2012 - 8.3%

2011 - 8.9%

2010 - 9.3%

The January 2014 average weekly initial unemployment claims for first-time Connecticut filers (seasonally adjusted) decreased over the month by 612 claims (-12.1%) to 4,442, and were lower by 442 claims (-9.0%) from last January (4,884). Initial claims have been volatile in the last year (see page 10).

*The nonfarm employment estimate, derived from a survey of businesses, is a measure of jobs in the state; the unemployment rate, based on a household survey, is a measure of the work status of people who live in Connecticut. Overall, as the national and state economies recover, volatility in monthly numbers can be expected. Additionally, changes in methodology that culminated in March 2011 with the U.S. Department of Labor, Bureau of Labor Statistics assuming complete responsibility for estimating all states' monthly nonfarm job counts, have contributed to the month-to-month variability in the numbers. **Jobs estimates are best understood in the context of their movement over several months rather than observed changes in a single month's estimate.***

Next Connecticut Labor Situation release: Thursday, March 27, 2014 (February 2014 data)

Contact: Communications Office

(860) 263-6535

03-14-14

Labor market information is available on the Internet at www.ctdol.state.ct.us/lmi

200 Folly Brook Boulevard, Wethersfield, CT 06109-1114 - www.ct.gov/dol

An Equal Opportunity/Affirmative Action Employer

**2013 Benchmark Revisions to Connecticut's Establishment Survey Data
(Total Nonfarm Employment Series, Current Employment Statistics)**

In accordance with annual practices, the establishment survey data released today have been benchmarked to reflect more comprehensive counts of nonfarm payroll jobs in the state. These revised job counts are derived primarily from unemployment insurance (UI) tax records through March 2013 (considered the benchmark month) but also include additional preliminary universe UI employment tabulations through September 2013. The employment data are then re-estimated from October 2013 to December 2013 with more complete samples from the newly benchmarked levels. This benchmark process results in revisions to *not seasonally adjusted* data mostly from April 2012 forward. Seasonally adjusted data from January 2008 forward are also subject to revision due to the changing seasonal factors. In addition, data for many industry employment series prior to 2008 (some possibly going back to 1990), both seasonally and unadjusted, may incorporate some minor revisions due to a slight change in scope of industry coverage.

Connecticut's total nonfarm employment level for March 2013 (the benchmark month) was revised **upward** by 6,500 from the initially published estimate of 1,643,000 to 1,649,500, or 0.4% higher seasonally adjusted (+3,900 or +0.2% on a not seasonally adjusted basis from 1,625,700 to 1,629,600). As a result of and coupled with forward month revisions, benchmark revision changes to the December 2013 seasonally adjusted nonfarm employment monthly levels were revised up 12,300 or about 0.7% higher for a new seasonally adjusted December 2013 level of 1,663,500 (+10,100 or about +0.6% higher on a not seasonally adjusted basis from 1,671,100 initially published to 1,681,200). This is a recovery highpoint.

It is also important to note that the original estimates of flattening job growth in the latter half of 2013, especially the fourth quarter, were revised higher to a trend of moderate job growth (see chart below).

All revised employment data for Connecticut should be available soon on Connecticut's Department of Labor's website under Labor Market Information. <http://www1.ctdol.state.ct.us/lmi/index.asp>

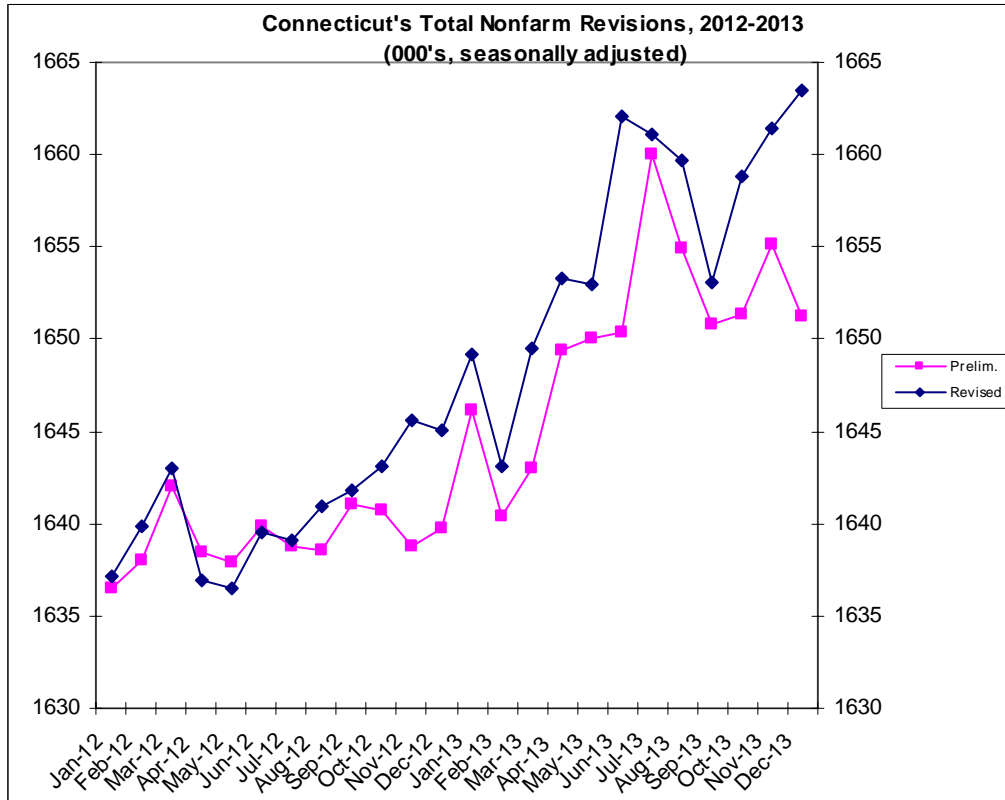


Table A. Revisions in total nonfarm employment, January-December 2013, seasonally adjusted (Numbers in thousands).

Level			Over - the - month change				
<u>Year and</u>	<u>Initial</u>	<u>As</u>	<u>Level</u>	<u>Year and</u>	<u>Initial</u>	<u>As</u>	
<u>Month</u>	<u>Estimate</u>	<u>Revised</u>	<u>Difference</u>	<u>Month</u>	<u>Estimate</u>	<u>Revised</u>	<u>Difference</u>
Jan-13	1646.1	1649.2	3.1	Jan-13	6.4	4.1	-2.3
Feb-13	1640.4	1643.1	2.7	Feb-13	-5.7	-6.1	-0.4
Mar-13	1643.0	1649.5	6.5	Mar-13	2.6	6.4	3.8
Apr-13	1649.4	1653.3	3.9	Apr-13	6.4	3.8	-2.6
May-13	1650.0	1653.0	3.0	May-13	0.6	-0.3	-0.9
Jun-13	1650.4	1662.1	11.7	Jun-13	0.4	9.1	8.7
Jul-13	1660.0	1661.1	1.1	Jul-13	9.6	-1.0	-10.6
Aug-13	1654.9	1659.7	4.8	Aug-13	-5.1	-1.4	3.7
Sep-13	1650.8	1653.1	2.3	Sep-13	-4.1	-6.6	-2.5
Oct-13	1651.3	1658.8	7.5	Oct-13	0.5	5.7	5.2
Nov-13	1655.1	1661.4	6.3	Nov-13	3.8	2.6	-1.2
Dec-13	1651.2	1663.5	12.3	Dec-13	-3.9	2.1	6.0

PRE and POST Benchmark Supersector Employment Levels

CONNECTICUT'S SEASONALLY ADJUSTED

SUPERSECTOR NONFARM EMPLOYMENT Revisions (000's)

<u>INDUSTRY</u>	<u>Pre-BM</u>	<u>Post-BM</u>	<u>Difference</u>	<u>Pre-BM</u>	<u>Post-BM</u>	<u>Difference</u>
	<u>Mar-13</u>	<u>Mar-13</u>	<u>(000's)</u>	<u>Dec-13</u>	<u>Dec-13</u>	<u>(000's)</u>
Total Nonfarm Employment	1643.0	1649.5	6.5	1651.2	1663.5	12.3
Total Private	1405.6	1411.4	5.8	1414.0	1427.9	13.9
Construction & Min.	54.1	53.8	-0.3	56.5	56.0	-0.5
Manufacturing	163.2	164.4	1.2	159.2	162.3	3.1
Trade, Transportation, & Utilities	294.7	297.3	2.6	300.7	301.9	1.2
Information	30.8	32.1	1.3	30.4	31.3	0.9
Financial Activities	130.3	131.5	1.2	129.5	132.3	2.8
Professional & Business Services	203.1	203.3	0.2	202.9	205.5	2.6
Education and Health Services	320.5	320.2	-0.3	328.3	326.3	-2.0
Leisure & Hospitality	147.2	146.3	-0.9	145.6	150.6	4.0
Other Services	61.7	62.5	0.8	60.9	61.7	0.8
Government	237.4	238.1	0.7	237.2	235.6	-1.6

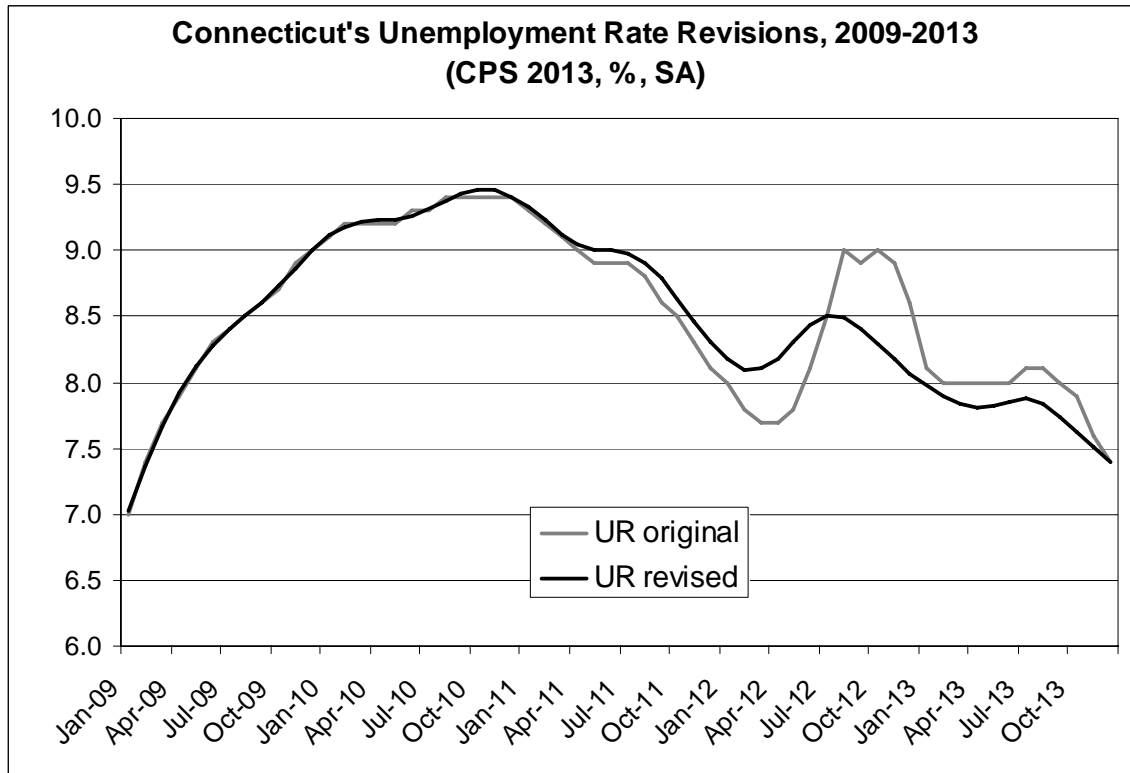
2013 Annual Processing to Connecticut's Local Area Unemployment Statistics

As with the establishment survey data, Local Area Unemployment Statistics (LAUS) undergoes annual revision called "annual processing." Unlike CES, revision to the LAUS estimates for each month in the following month is called "benchmarking." LAUS is revised last five years (2009-2013) as more current information becomes available on nonfarm jobs and unemployment claims, and from the household survey and other Census Bureau sources.

During the annual processing in March, in addition to annual revisions to the inputs, new population controls are also incorporated into the estimates. Current Population Survey (CPS) employment and unemployment estimates for census divisions, States, and modeled substate areas are updated to reflect new vintage 2013 population controls. The term "population controls" refers to population data developed from various independent sources, such as vital statistics on births, deaths, migration, school enrollment, persons living in group quarters, inmates in institutions, etc., which are used in Current Population Survey estimation procedures to independently adjust sample-based labor force levels. These are updated annually by the Bureau of the Census and provided to BLS. The impact on LAUS estimates of new population controls is to proportionately raise or lower the estimates of labor force levels (with unemployment rates, labor force participation rates, and employment/population ratios being unaffected) for census regions and divisions, the states and the District of Columbia, and seven substate areas.

More specifically, Census division models are reestimated and forced to sum to updated national CPS levels (even though the official CPS national estimates are not revised to reflect these updated controls). Then statewide model-based estimates are reestimated and benchmarked to the newly revised census division estimates. For more detailed information on the methodology of LAUS, see "*Local Area Unemployment Statistics: A Primer*" in November 2012 issue of the Connecticut Economic Digest.

Thus, as you can see in the chart below, such changes will sometimes cause significant revisions to the originally estimated unemployment rates. It turns out, Connecticut seasonally adjusted unemployment rates did not spike up in July and August of 2012 as high as originally estimated. Connecticut's revised annual average unemployment rate fell further from 8.3% in 2012 to 7.8% in 2013. Originally, it was 8.4% in 2012 and 7.9% in 2013. All revised LAUS data for Connecticut is available on Connecticut Department of Labor's Labor Market Information page, <http://www1.ctdol.state.ct.us/lmi/>.



NONFARM EMPLOYMENT

Jobs - by Place of Work

CONNECTICUT AND THE UNITED STATES - Seasonally Adjusted

	January 2014 P	December 2013 R	November 2013	October 2013	January 2013	Over Month Change	Over Month Rate	Over Year Change	Over Year Rate
CONNECTICUT	1,653,100	1,663,500	1,661,400	1,658,800	1,649,200	-10,400	-0.6%	3,900	0.2%
Total Private	1,418,200	1,427,900	1,426,400	1,423,900	1,408,700	-9,700	-0.7%	9,500	0.7%
Goods Producing Industries									
Mining	500	600	600	600	600	-100	-16.7%	-100	-16.7%
Construction	55,400	55,400	55,200	54,500	52,900	0	0.0%	2,500	4.7%
Manufacturing	163,600	162,300	162,300	163,400	164,500	1,300	0.8%	-900	-0.5%
Durable Goods	126,400	125,200	125,300	126,300	128,300	1,200	1.0%	-1,900	-1.5%
Nondurable Goods	37,200	37,100	37,000	37,100	36,200	100	0.3%	1,000	2.8%
Service Providing Industries									
Trade, Transportation & Utilities	298,700	301,900	302,400	300,200	296,700	-3,200	-1.1%	2,000	0.7%
Wholesale	63,900	63,300	63,600	63,400	63,000	600	0.9%	900	1.4%
Retail	181,700	185,500	185,700	184,300	182,400	-3,800	-2.0%	-700	-0.4%
Transp, Warehousing & Utilities	53,100	53,100	53,100	52,500	51,300	0	0.0%	1,800	3.5%
Information	31,200	31,300	31,500	31,600	31,700	-100	-0.3%	-500	-1.6%
Financial Activities	130,500	132,300	132,100	131,300	132,600	-1,800	-1.4%	-2,100	-1.6%
Finance & Insurance	111,400	113,000	112,900	112,300	113,700	-1,600	-1.4%	-2,300	-2.0%
Real Estate, Rental & Leasing	19,100	19,300	19,200	19,000	18,900	-200	-1.0%	200	1.1%
Professional & Business Services	202,600	205,500	205,600	205,500	202,600	-2,900	-1.4%	0	0.0%
Prof, Scientific & Tech Services	90,000	90,900	90,800	90,500	89,500	-900	-1.0%	500	0.6%
Management of Companies	29,500	29,200	29,400	29,400	28,900	300	1.0%	600	2.1%
Admn & Support & Waste Mgt Serv	83,100	85,400	85,400	85,600	84,200	-2,300	-2.7%	-1,100	-1.3%
Educational & Health Services	326,500	326,300	325,900	324,700	319,400	200	0.1%	7,100	2.2%
Educational Services	64,200	63,700	64,000	63,500	61,500	500	0.8%	2,700	4.4%
Health Care & Social Assistance	262,300	262,600	261,900	261,200	257,900	-300	-0.1%	4,400	1.7%
Leisure and Hospitality	147,700	150,600	149,400	150,400	145,400	-2,900	-1.9%	2,300	1.6%
Arts, Entertainment & Recreation	24,900	25,500	25,000	25,800	25,600	-600	-2.4%	-700	-2.7%
Accommodation & Food Services	122,800	125,100	124,400	124,600	119,800	-2,300	-1.8%	3,000	2.5%
Other Services	61,500	61,700	61,400	61,700	62,300	-200	-0.3%	-800	-1.3%
Government**	234,900	235,600	235,000	234,900	240,500	-700	-0.3%	-5,600	-2.3%
UNITED STATES	137,524,000	137,395,000	137,311,000	137,037,000	135,261,000	129,000	0.1%	2,263,000	1.7%

LABOR MARKET AREAS (LMA)

Labor Market Area employment estimates are made independently of Statewide estimates.

Seasonally Adjusted data	January 2014 P	December 2013 R	November 2013	October 2013	January 2013	Over Month Change	Over Month Rate	Over Year Change	Over Year Rate
Bridgeport-Stamford	413,600	414,900	413,800	411,300	408,500	-1,300	-0.3%	5,100	1.2%
Danbury	68,700	69,700	69,400	69,100	68,600	-1,000	-1.4%	100	0.1%
Hartford	551,700	552,000	551,800	550,800	547,500	-300	-0.1%	4,200	0.8%
New Haven	274,200	276,200	275,800	274,100	272,000	-2,000	-0.7%	2,200	0.8%
Norwich-New London	126,200	127,000	127,500	127,400	127,900	-800	-0.6%	-1,700	-1.3%
Waterbury	64,400	65,300	65,200	64,900	63,600	-900	-1.4%	800	1.3%
<i>Not Seasonally Adjusted data (Non-Classified Areas, State estimated not BLS)</i>									
Enfield	43,400	44,200	44,200	44,100	44,000	-800	-1.8%	-600	-1.4%
Torrington	35,800	36,900	36,800	36,900	35,400	-1,100	-3.0%	400	1.1%
Willimantic-Danielson	37,300	37,900	37,900	38,100	36,700	-600	-1.6%	600	1.6%

* Less than 0.05% ** Includes Native American tribal government employment

P = Preliminary

R = Revised

Starting with March, 2011, our monthly statewide and major LMA nonfarm job estimates have been taken over by the US Department of Labor Bureau of Labor Statistics. This is the final phase of transition in this program, which began in 2008. As a result of changes in the estimation procedures, you are likely to see more variability in month-to-month estimates of job counts. Caution should be used in interpreting any single month's estimate. The data are best interpreted to identify trends and cycles over several months and quarters. If you have any questions about these changes, please email us at: dol.lmi@ct.gov.

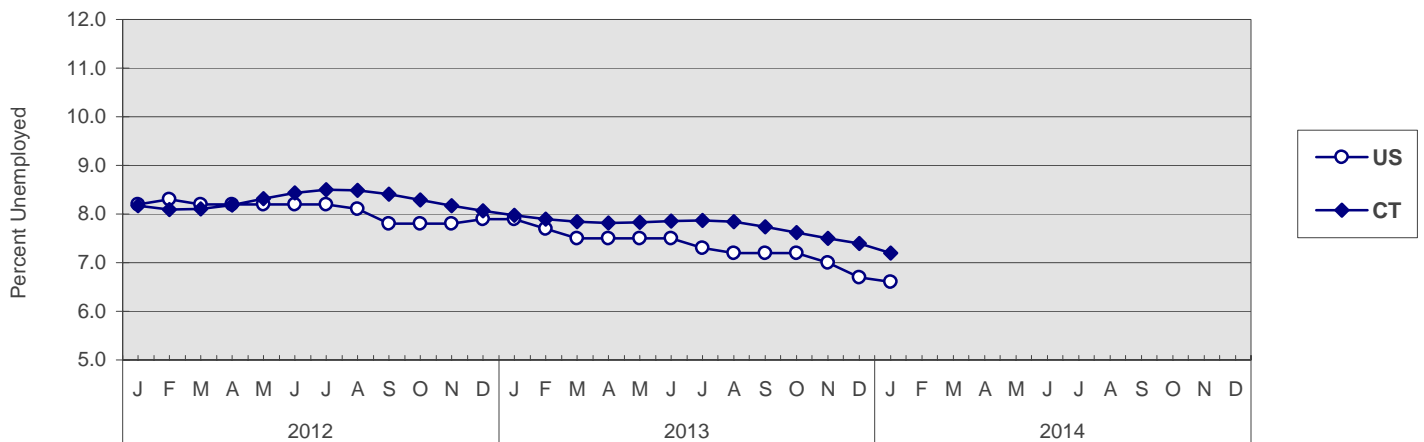
UNEMPLOYMENT

Persons Unemployed - by Place of Residence

CONNECTICUT AND THE UNITED STATES - Seasonally Adjusted

	January 2014 P		January 2013		Change		December 2013 R	
	Number	Rate	Number	Rate	Number	Points	Number	Rate
CONNECTICUT								
Unemployed	133,000	7.2	149,400	8.0	-16,400	-0.8	136,400	7.4
Labor Force	1,852,400		1,873,300		-20,900		1,845,800	
UNITED STATES								
Unemployed	10,236,000	6.6	12,315,000	7.9	-2,079,000	-1.3	10,351,000	6.7
Labor Force	155,460,000		155,699,000		-239,000		154,937,000	

U.S. AND CONNECTICUT UNEMPLOYMENT RATES - Seasonally Adjusted 2012 - 2014



LABOR MARKET AREAS - Not Seasonally Adjusted

	January 2014 P		January 2013		Change		December 2013 R	
	Number	Rate	Number	Rate	Number	Points	Number	Rate
Bridgeport-Stamford	32,800	7.0	37,900	8.1	-5,100	-1.1	29,300	6.3
Danbury	5,500	6.0	6,500	7.1	-1,000	-1.1	4,800	5.3
Enfield	3,500	7.1	4,300	8.7	-800	-1.6	3,200	6.5
Hartford	44,300	7.6	51,300	8.7	-7,000	-1.1	39,600	6.8
New Haven	24,100	7.8	28,100	9.0	-4,000	-1.2	21,600	7.0
Norwich-New London	11,400	8.0	13,300	9.1	-1,900	-1.1	10,700	7.6
Torrington	3,900	7.2	4,500	8.4	-600	-1.2	3,300	6.2
Waterbury	10,100	10.1	11,500	11.5	-1,400	-1.4	9,000	9.0
Willimantic-Danielson	5,000	8.7	6,000	10.4	-1,000	-1.7	4,400	7.7
CONNECTICUT	139,400	7.5	162,300	8.7	-22,900	-1.2	124,900	6.8
UNITED STATES	10,855,000	7.0	13,181,000	8.5	-2,326,000	-1.5	9,984,000	6.5

P = Preliminary

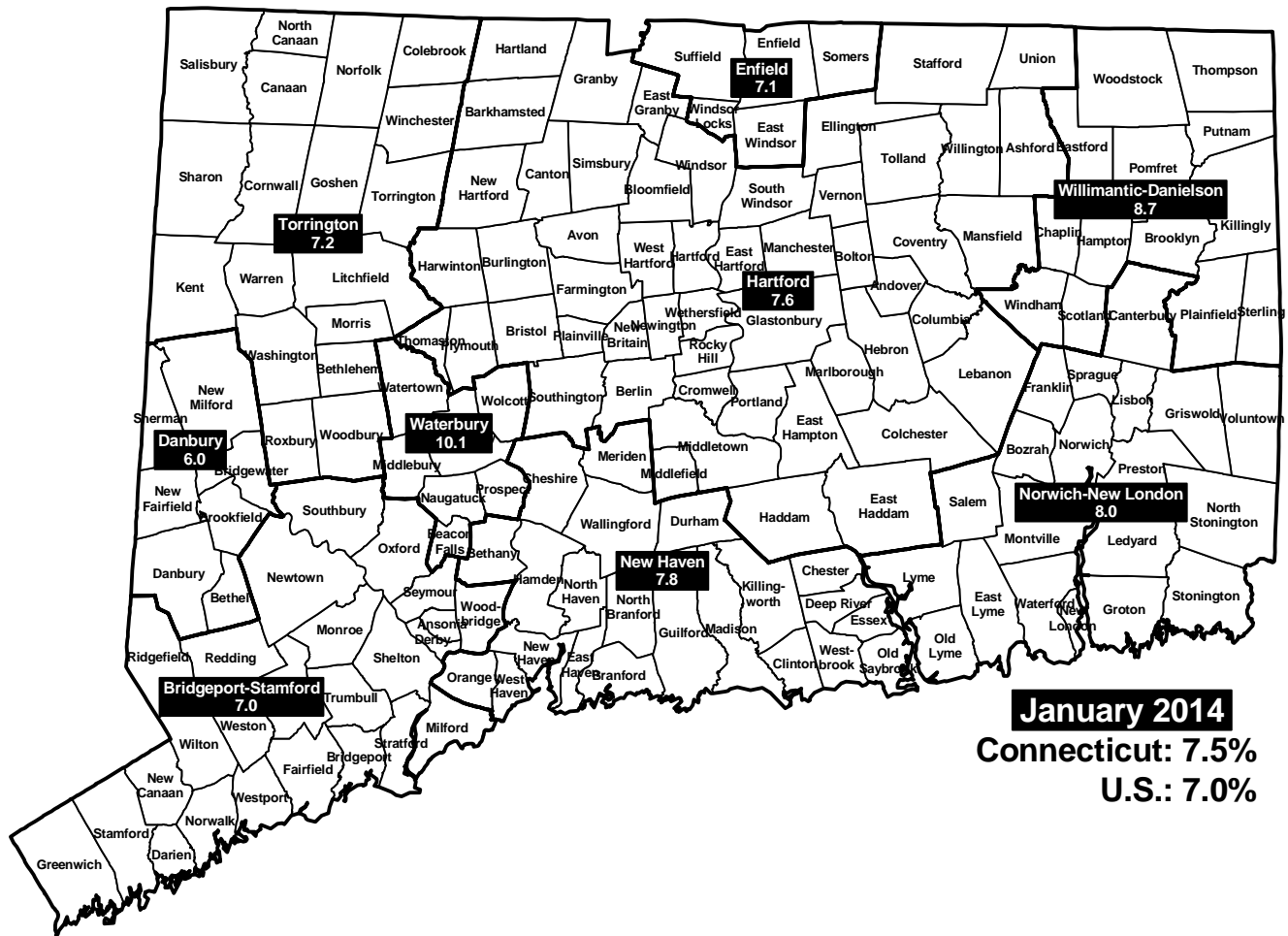
R = Revised

Labor force data included in this publication are developed in cooperation with the U.S. Department of Labor, Bureau of Labor Statistics.

UNEMPLOYMENT RATES

Not Seasonally Adjusted

LABOR MARKET AREAS



HOURS AND EARNINGS

CONNECTICUT Statewide - Not Seasonally Adjusted

	Average Weekly Earnings				Average Weekly Hours				Average Hourly Earnings			
	Jan. 2014 P	Jan. 2013	Change over Yr.	Dec. 2013 R	Jan. 2014 P	Jan. 2013	Change over Yr.	Dec. 2013 R	Jan. 2014 P	Jan. 2013	Change over Yr.	Dec. 2013 R
Private Industry All Employees	\$921.96	\$940.56	-\$18.60	\$941.81	33.2	33.2	0.0	33.6	\$27.77	\$28.33	-\$0.56	\$28.03
Manufacturing* Production Workers	\$904.68	\$914.49	-\$9.81	\$904.62	42.0	40.5	1.5	41.9	\$21.54	\$22.58	-\$1.04	\$21.59

* Production worker data have been impacted by the loss of a large, high-paying manufacturer from the monthly sample.

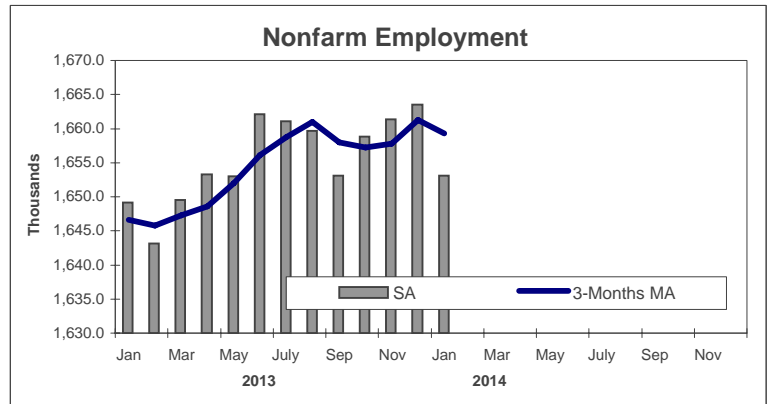
P = Preliminary R = Revised

Hours and earnings are also developed for the state's major industry sectors and Labor Market Areas. They can be found on our website at: www.ctdol.state.ct.us/lmi.

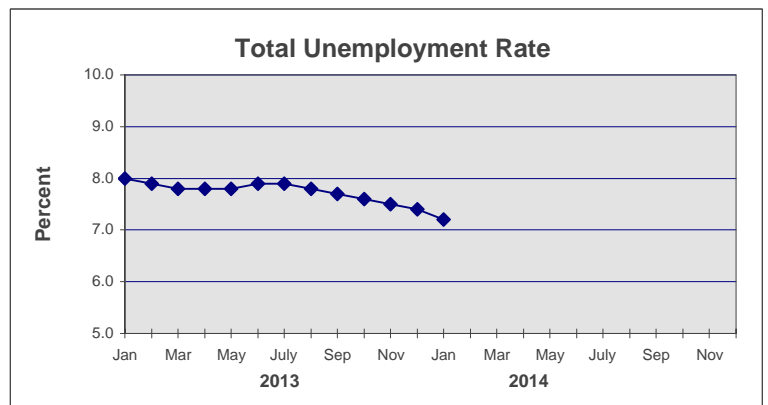
TRENDS

Seasonally Adjusted

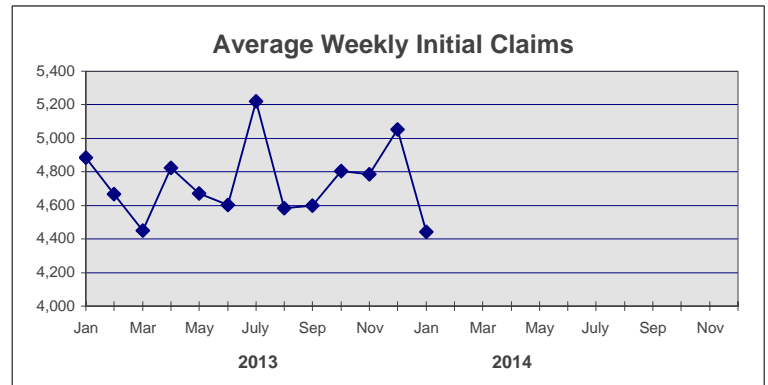
	Nonfarm Employment (000s)	Total Unemployment Rate
2013		
Jan	1,649.2	8.0
Feb	1,643.1	7.9
Mar	1,649.5	7.8
Apr	1,653.3	7.8
May	1,653.0	7.8
Jun	1,662.1	7.9
July	1,661.1	7.9
Aug	1,659.7	7.8
Sep	1,653.1	7.7
Oct	1,658.8	7.6
Nov	1,661.4	7.5
Dec	1,663.5 R	7.4 R



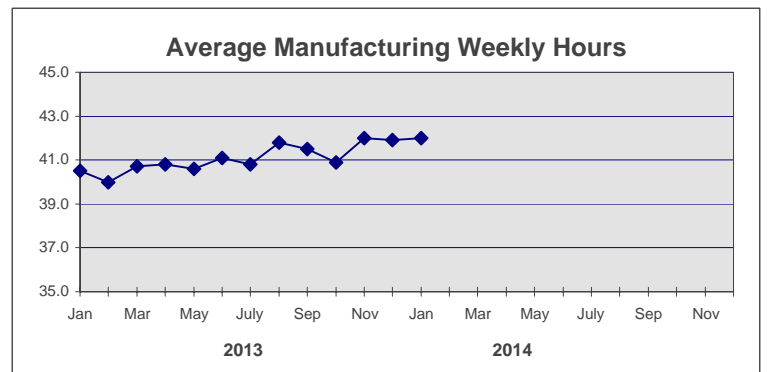
2014		
Jan	1,653.1 P	7.2 P
Feb		
Mar		
Apr		
May		
Jun		
July		
Aug		
Sep		
Oct		
Nov		
Dec		



	Avg Weekly Initial Claims	Avg Manufacturing Weekly Hours*
2013		
Jan	4,884	40.5
Feb	4,669	40.0
Mar	4,452	40.7
Apr	4,823	40.8
May	4,672	40.6
Jun	4,602	41.1
July	5,220	40.8
Aug	4,585	41.8
Sep	4,598	41.5
Oct	4,805	40.9
Nov	4,786	42.0
Dec	5,054	41.9 R



2014		
Jan	4,442	42.0 P
Feb		
Mar		
Apr		
May		
Jun		
July		
Aug		
Sep		
Oct		
Nov		
Dec		



* Not seasonally adjusted

P = Preliminary

R = Revised

** Labor-management dispute