



LABOR SITUATION

Office of Research
Sharon M. Palmer, Commissioner

FOR IMMEDIATE RELEASE

February 2014 Data
CT Unemployment Rate = 7.0%
US Unemployment Rate = 6.7%

February jobs up 800, private sector up 2,700, as unemployment rate continues to trend lower to 7.0%

WETHERSFIELD, March 27, 2014 – Connecticut regained 800 total nonfarm jobs (0.05%) in February after a major weather-related employment decline in January, and has now added 10,300 jobs (0.63%) over the year. The more robust private sector had a stronger job rebound, adding 2,700 positions (0.19%), and has increased payrolls at a much faster pace over the year (14,000, 1.00%). The turnaround from January's sharp decline seems to confirm that weather was at least partly responsible.

The state's unemployment rate continued to undergo a steady decline, dropping two-tenths of a percentage point this month to 7.0%, and is down from the 7.9% rate calculated a year ago. This is the seventh consecutive monthly decline in Connecticut's unemployment rate since July 2013. An increasing civilian labor force (5,842, 0.3%) for the second month in a row, coupled with strongly rising residential employment (8,489, 0.5%), and a falling number of unemployed residents (-2,647, -2.0%) all helped to bring the unemployment rate down this month. The number of unemployed Connecticut residents has decreased 17,502 (-11.8%) since February 2013.

"February's job report seemed to confirm that weather was partly responsible for January's sharp decline as we saw recovery in several of the industries that had stumbled," said Andy Condon, Director of the Office of Research. "The continued decline in Connecticut's unemployment rate, driven by growing household employment, signals that we continue on the path of job recovery."

Nonfarm Jobs (business establishment survey)

Preliminary seasonally adjusted total nonfarm employment estimates for February show nonfarm employment grew slightly by 800 (0.05%) jobs. This helped to turn around and extend year-over-year nonfarm job growth back out to 10,300 (0.63%, seasonally adjusted) positions this month, after narrowing to just 3,400 (0.21%) after January's large revised weather-influenced job loss (-10,900, -0.66% OTM).

Connecticut's core private sector (2,700, 0.19%) was certainly stronger last month and has shown more solid over-the-year growth (14,000, 1.00%). The government *supersector* (-1,900, -0.81%) remained a drag on overall employment gains both over-the-month and over-the-year (-3,700, -1.56%). Since the overall job recovery began in February 2010, an additional 12,300 public sector jobs have been lost.

Five industry *supersectors* gained jobs in February and five showed losses. This is also true for industry gains over the year. The five growing *supersectors* in February were led by the **professional and business services** (3,000, 1.48%). This *supersector* was sharply lower in January (-2,600) and more than regained that loss. The combined **construction and mining** (1,500, 2.7%) industry *supersector* was also higher in February after just a small 100 job loss in the very stormy January. Construction is now the fastest growing industry grouping in percentage terms (3,800, 7.1% over the year). **Other services** (600, 1.0%) and **leisure and hospitality** (600, 0.4%) *supersectors* both gained jobs, recovering some losses from January's cold as well. The **information** *supersector* (100, 0.3%) grew slightly.

Monthly job losses came largely from the **manufacturing** (-1,900, -1.2%) *supersector* and **government** (-1,900, -0.8%) entities. **Manufacturing** experienced a significant *durable goods* segment decline (-2,000, -1.6%) while *nondurable goods* components were slightly higher (100, 0.3%). The **government** *supersector* was lower at all three levels; **federal** (-100, -0.6%), **state** (-1,400, -2.2%) and **local** (-400, -0.3%). Smaller job losses of fewer than a thousand came from **financial activities** (-500, -0.4%), **education and health services** (-400, -0.1%), and **trade, transportation, and utilities** (-300, -0.1%).

Recession recovery: Connecticut has recovered 59,500 positions, or nearly half of the 119,100 seasonally adjusted **total nonfarm** jobs that were lost in the state in the March 2008 - February 2010 employment downturn. Connecticut's jobs recovery is now 48 months old and is averaging approximately 1,240 jobs per month overall since February 2010 (14,875 jobs per year over the four years). The **private sector** has recovered much better and has now recouped 71,800 (64.1%, 1,496 per month) of the 112,000 private jobs that were lost during the same recessionary period (17,950 jobs per year). Now at 1,653,400 nonfarm jobs in February, the state needs to reach the 1,713,000 level to start a true nonfarm employment expansion. This will require an additional 59,600 jobs going forward.

Labor Market Areas (LMAs): February 2014 preliminary estimates reveal three of the six major Connecticut Labor Market Areas (Bureau of Labor Statistics recognized LMAs) posted nonfarm job gains, while two LMAs lost jobs and the **Norwich-New London LMA** was unchanged. The **New Haven LMA** (2,000, 0.7%) had the largest job gain in magnitude and in percentage terms, while the **Danbury LMA** (400, 0.6%) and the **Bridgeport-Stamford-Norwalk LMA** (300, 0.1%) were also positive. The **Hartford LMA** (-5,000, -0.9%), which was flat last month after revision, experienced a sharp job decline this month. The **Waterbury LMA** (-400, -0.6%) was lower as well. The **Norwich-New London LMA** is the only BLS-recognized LMA to lose jobs over the year (-1,800, -1.4%). *Note: The major Connecticut LMAs are estimated and seasonally adjusted independently from the statewide numbers by the BLS and cover about 90% of the nonfarm employment in the state, so they will not fully sum to the statewide total.*

Hours and Earnings: The **private sector** workweek, not seasonally adjusted, averaged 32.8 hours in February 2014, down two-tenths of an hour from the year ago February 2013 figure (33.0). Average hourly earnings at \$28.34, not seasonally adjusted, were actually up two cents, or 0.07% from the February 2013 hourly private sector pay estimate (\$28.32). The resulting average **private sector** weekly pay was calculated at \$929.55, down \$5.01, or -0.5% over the year. The year-to-year change in the Consumer Price Index for All Urban Consumers (CPI-U, U.S. City Average, not seasonally adjusted) in February 2014 was 1.1%. Information for the manufacturing production workweek and earnings can be found in the table section of this release under the "Hours and Earnings" data category.

Labor Force Data (residential household survey)

Connecticut's unemployment rate was estimated at **7.0%** for February 2014. This is down two-tenths of a percentage point from January, and down nine-tenths of a percentage point from the February 2013's unemployment rate of 7.9%. This is the seventh monthly decline in a row since July 2013 when the rate also was 7.9%. There was healthy growth in the civilian labor force (+5,842, 0.3%) in February for the second month in a row. The unemployment rate in Connecticut has not been this low since it was 7.0% in January of 2009.

Unemployment: Based on the household survey, the number of unemployed, seasonally adjusted, decreased by 2,647 (-2.0%) over the month to 130,237 in February 2014. The state's number of unemployed residents has declined by 17,502 (-11.8%) since February 2013. The February United States unemployment rate was 6.7%, up one-tenth of a percentage point from the January 2014 rate (6.6%), and lower by one full percentage point from the February 2013 rate, when it was estimated at 7.7%. The state and national unemployment rates have been converging again as they have consistently done in the winter months as of late (see page 5).

The February 2014 average weekly initial unemployment claims for first-time Connecticut filers (seasonally adjusted) decreased over the month by 667 claims (-15.0%) to 3,775, and were lower by 894 claims (-19.1%) from last February (4,669). This seasonally adjusted level of average weekly initial unemployment claims (3,775) for February 2014 is the lowest seasonally adjusted level since January 2006 (3,774) but it may be partially influenced by delayed filing and processing due to unseasonably colder weather.

*The nonfarm employment estimate, derived from a survey of businesses, is a measure of jobs in the state; the unemployment rate, based on a household survey, is a measure of the work status of people who live in Connecticut. Overall, as the national and state economies recover, volatility in monthly numbers can be expected. Additionally, changes in methodology that culminated in March 2011 with the U.S. Department of Labor, Bureau of Labor Statistics assuming complete responsibility for estimating all states' monthly nonfarm job counts, have contributed to the month-to-month variability in the numbers. **Jobs estimates are best understood in the context of their movement over several months rather than observed changes in a single month's estimate.***

Next Connecticut Labor Situation release: Thursday, April 17, 2014 (March 2014 data)

Contact: Communications Office

(860) 263-6535

03-27-14

Labor market information is available on the Internet at www.ctdol.state.ct.us/lmi
200 Folly Brook Boulevard, Wethersfield, CT 06109-1114 - www.ct.gov/dol
An Equal Opportunity/Affirmative Action Employer

NONFARM EMPLOYMENT

Jobs - by Place of Work

CONNECTICUT AND THE UNITED STATES - Seasonally Adjusted

	February 2014 P	January 2014 R	December 2013	November 2013	February 2013	Over Month Change	Over Month Rate	Over Year Change	Over Year Rate
CONNECTICUT	1,653,400	1,652,600	1,663,500	1,661,400	1,643,100	800	0.0%	10,300	0.6%
Total Private	1,420,200	1,417,500	1,427,900	1,426,400	1,406,200	2,700	0.2%	14,000	1.0%
Goods Producing Industries									
Mining	600	500	600	600	600	100	20.0%	0	0.0%
Construction	56,800	55,400	55,400	55,200	53,000	1,400	2.5%	3,800	7.2%
Manufacturing	161,900	163,800	162,300	162,300	164,600	-1,900	-1.2%	-2,700	-1.6%
Durable Goods	124,400	126,400	125,200	125,300	128,400	-2,000	-1.6%	-4,000	-3.1%
Nondurable Goods	37,500	37,400	37,100	37,000	36,200	100	0.3%	1,300	3.6%
Service Providing Industries									
Trade, Transportation & Utilities	298,100	298,400	301,900	302,400	295,800	-300	-0.1%	2,300	0.8%
Wholesale	63,800	63,900	63,300	63,600	62,900	-100	-0.2%	900	1.4%
Retail	182,000	181,900	185,500	185,700	182,600	100	0.1%	-600	-0.3%
Transp, Warehousing & Utilities	52,300	52,600	53,100	53,100	50,300	-300	-0.6%	2,000	4.0%
Information	31,500	31,400	31,300	31,500	32,100	100	0.3%	-600	-1.9%
Financial Activities	130,300	130,800	132,300	132,100	132,000	-500	-0.4%	-1,700	-1.3%
Finance & Insurance	111,300	111,700	113,000	112,900	113,000	-400	-0.4%	-1,700	-1.5%
Real Estate, Rental & Leasing	19,000	19,100	19,300	19,200	19,000	-100	-0.5%	0	0.0%
Professional & Business Services	205,900	202,900	205,500	205,600	204,000	3,000	1.5%	1,900	0.9%
Prof, Scientific & Tech Services	90,400	89,900	90,900	90,800	89,600	500	0.6%	800	0.9%
Management of Companies	29,200	29,400	29,200	29,400	29,000	-200	-0.7%	200	0.7%
Admn & Support & Waste Mgt Serv	86,300	83,600	85,400	85,400	85,400	2,700	3.2%	900	1.1%
Educational & Health Services	324,600	325,000	326,300	325,900	318,400	-400	-0.1%	6,200	1.9%
Educational Services	63,900	62,500	63,700	64,000	61,600	1,400	2.2%	2,300	3.7%
Health Care & Social Assistance	260,700	262,500	262,600	261,900	256,800	-1,800	-0.7%	3,900	1.5%
Leisure and Hospitality	148,600	148,000	150,600	149,400	143,400	600	0.4%	5,200	3.6%
Arts, Entertainment & Recreation	24,500	24,800	25,500	25,000	25,500	-300	-1.2%	-1,000	-3.9%
Accommodation & Food Services	124,100	123,200	125,100	124,400	117,900	900	0.7%	6,200	5.3%
Other Services	61,900	61,300	61,700	61,400	62,300	600	1.0%	-400	-0.6%
Government**	233,200	235,100	235,600	235,000	236,900	-1,900	-0.8%	-3,700	-1.6%
UNITED STATES	137,699,000	137,524,000	137,395,000	137,311,000	135,541,000	175,000	0.1%	2,158,000	1.6%

LABOR MARKET AREAS (LMA)

Labor Market Area employment estimates are made independently of Statewide estimates.

Seasonally Adjusted data	February 2014 P	January 2014 R	December 2013	November 2013	February 2013	Over Month Change	Over Month Rate	Over Year Change	Over Year Rate
Bridgeport-Stamford	413,300	413,000	414,900	413,800	407,700	300	0.1%	5,600	1.4%
Danbury	69,000	68,600	69,700	69,400	68,600	400	0.6%	400	0.6%
Hartford	547,000	552,000	552,000	551,800	546,000	-5,000	-0.9%	1,000	0.2%
New Haven	276,700	274,700	276,200	275,800	270,500	2,000	0.7%	6,200	2.3%
Norwich-New London	126,000	126,000	127,000	127,500	127,800	0	0.0%	-1,800	-1.4%
Waterbury	64,100	64,500	65,300	65,200	63,500	-400	-0.6%	600	0.9%
<i>Not Seasonally Adjusted data (Non-Classified Areas, State estimated not BLS)</i>									
Enfield	43,400	43,400	44,200	44,200	44,000	0	0.0%	-600	-1.4%
Torrington	35,500	35,900	36,900	36,800	34,800	-400	-1.1%	700	2.0%
Willimantic-Danielson	37,000	37,300	37,900	37,900	36,200	-300	-0.8%	800	2.2%

* Less than 0.05% ** Includes Native American tribal government employment

P = Preliminary

R = Revised

Starting with March, 2011, our monthly statewide and major LMA nonfarm job estimates have been taken over by the US Department of Labor Bureau of Labor Statistics. This is the final phase of transition in this program, which began in 2008. As a result of changes in the estimation procedures, you are likely to see more variability in month-to-month estimates of job counts. Caution should be used in interpreting any single month's estimate. The data are best interpreted to identify trends and cycles over several months and quarters. If you have any questions about these changes, please email us at: dol.lmi@ct.gov.

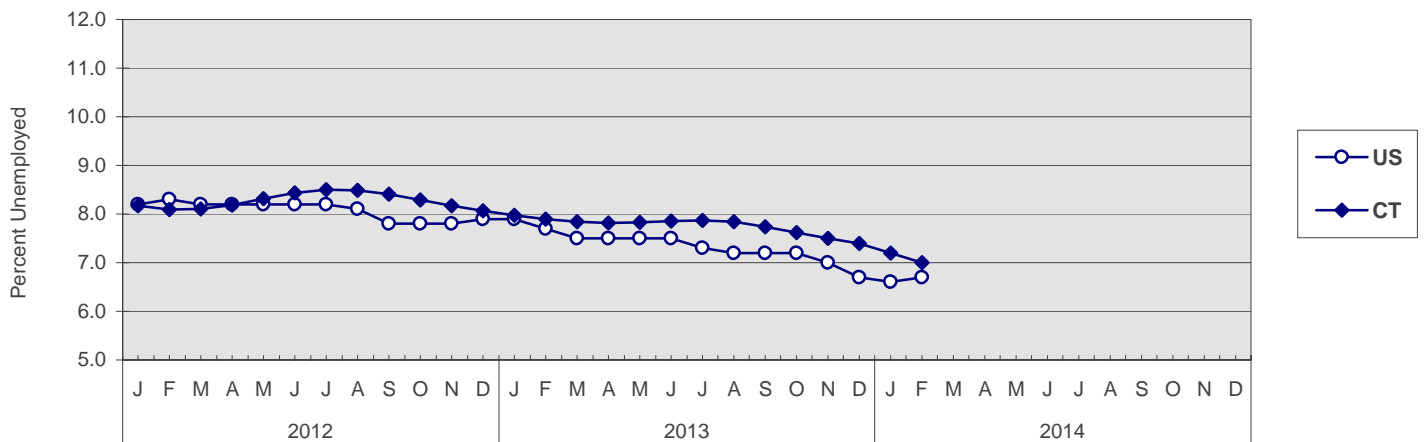
UNEMPLOYMENT

Persons Unemployed - by Place of Residence

CONNECTICUT AND THE UNITED STATES - Seasonally Adjusted

	February 2014 P		February 2013		Change		January 2014 R	
	Number	Rate	Number	Rate	Number	Points	Number	Rate
CONNECTICUT								
Unemployed	130,200	7.0	147,700	7.9	-17,500	-0.9	132,900	7.2
Labor Force	1,858,000		1,870,500		-12,500		1,852,200	
UNITED STATES								
Unemployed	10,459,000	6.7	12,047,000	7.7	-1,588,000	-1.0	10,236,000	6.6
Labor Force	155,724,000		155,511,000		213,000		155,460,000	

U.S. AND CONNECTICUT UNEMPLOYMENT RATES - Seasonally Adjusted 2012 - 2014



LABOR MARKET AREAS - Not Seasonally Adjusted

	February 2014 P		February 2013		Change		January 2014 R	
	Number	Rate	Number	Rate	Number	Points	Number	Rate
Bridgeport-Stamford	32,700	7.0	37,100	7.9	-4,400	-0.9	32,800	7.0
Danbury	5,500	6.1	6,300	6.9	-800	-0.8	5,400	6.0
Enfield	3,400	6.8	3,800	7.7	-400	-0.9	3,500	7.1
Hartford	43,500	7.4	49,400	8.4	-5,900	-1.0	44,300	7.6
New Haven	23,600	7.6	27,300	8.8	-3,700	-1.2	24,100	7.7
Norwich-New London	11,100	7.8	12,600	8.6	-1,500	-0.8	11,300	8.0
Torrington	3,900	7.3	4,500	8.4	-600	-1.1	3,900	7.2
Waterbury	10,100	10.1	11,400	11.4	-1,300	-1.3	10,100	10.1
Willimantic-Danielson	4,800	8.4	5,500	9.5	-700	-1.1	4,900	8.6
CONNECTICUT	137,500	7.4	156,600	8.4	-19,100	-1.0	139,100	7.5
UNITED STATES	10,893,000	7.0	12,500,000	8.1	-1,607,000	-1.1	10,855,000	7.0

P = Preliminary

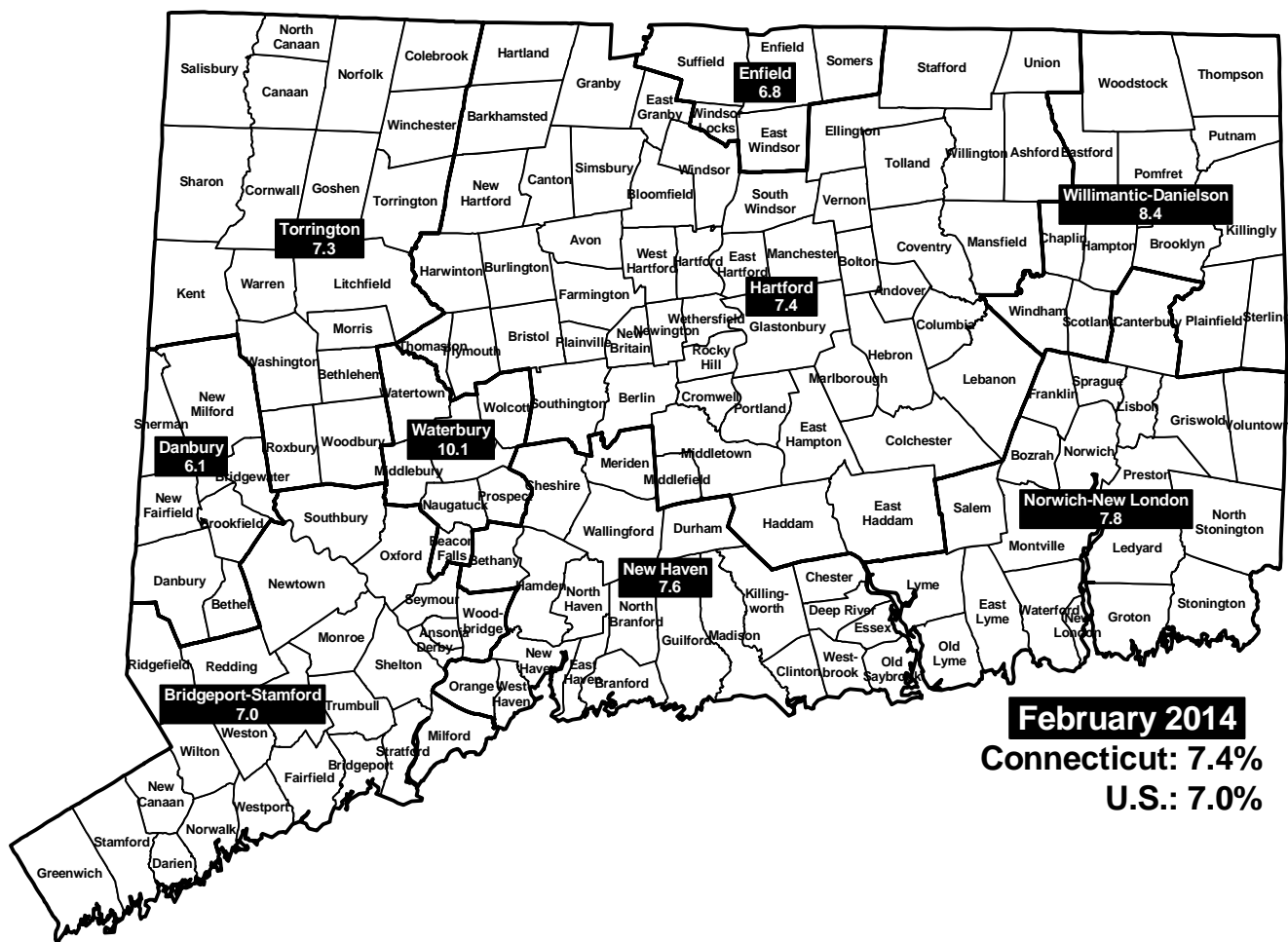
R = Revised

Labor force data included in this publication are developed in cooperation with the U.S. Department of Labor, Bureau of Labor Statistics.

UNEMPLOYMENT RATES

Not Seasonally Adjusted

LABOR MARKET AREAS



HOURS AND EARNINGS

CONNECTICUT Statewide - Not Seasonally Adjusted

	Average Weekly Earnings				Average Weekly Hours				Average Hourly Earnings			
	Feb. 2014 P	Feb. 2013	Change over Yr.	Jan. 2013 R	Feb. 2014 P	Feb. 2013	Change over Yr.	Jan. 2013 R	Feb. 2014 P	Feb. 2013	Change over Yr.	Jan. 2013 R
Private Industry All Employees	\$929.55	\$934.56	-\$5.01	\$924.62	32.8	33.0	-0.2	33.2	\$28.34	\$28.32	\$0.02	\$27.85
Manufacturing* Production Workers	\$886.55	\$899.60	-\$13.05	\$903.42	40.5	40.0	0.5	42.0	\$21.89	\$22.49	-\$0.60	\$21.51

* Production worker data have been impacted by the loss of a large, high-paying manufacturer from the monthly sample.

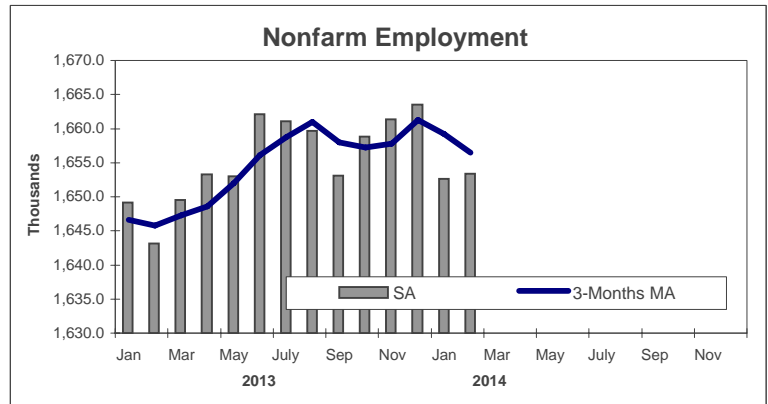
P = Preliminary R = Revised

Hours and earnings are also developed for the state's major industry sectors and Labor Market Areas. They can be found on our website at: www.ctdol.state.ct.us/lmi.

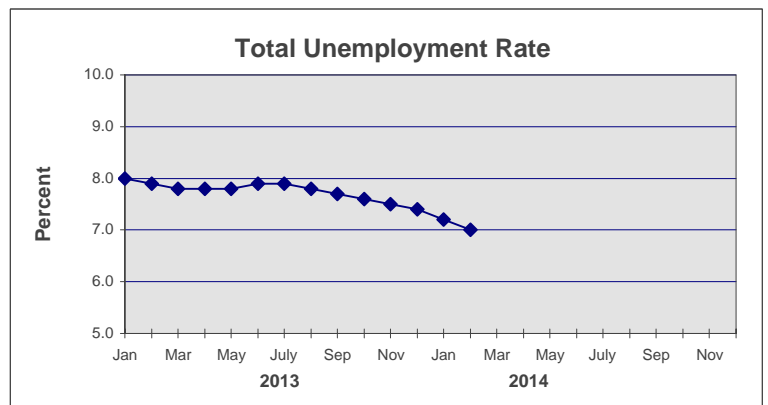
TRENDS

Seasonally Adjusted

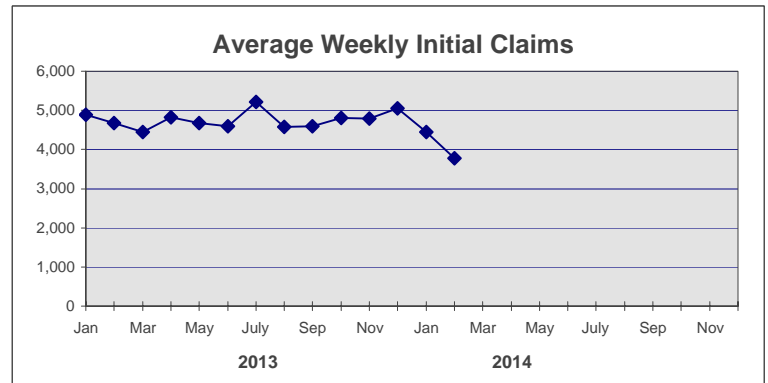
	Nonfarm Employment (000s)	Total Unemployment Rate
2013		
Jan	1,649.2	8.0
Feb	1,643.1	7.9
Mar	1,649.5	7.8
Apr	1,653.3	7.8
May	1,653.0	7.8
Jun	1,662.1	7.9
July	1,661.1	7.9
Aug	1,659.7	7.8
Sep	1,653.1	7.7
Oct	1,658.8	7.6
Nov	1,661.4	7.5
Dec	1,663.5	7.4



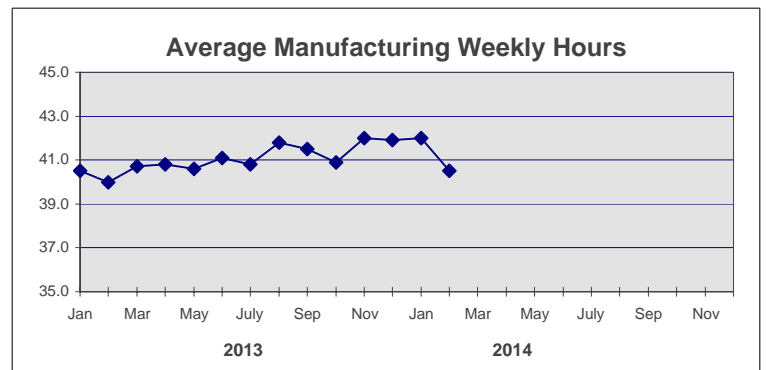
2014		
Jan	1,652.6 R	7.2 R
Feb	1,653.4 P	7.0 P
Mar		
Apr		
May		
Jun		
July		
Aug		
Sep		
Oct		
Nov		
Dec		



	Avg Weekly Initial Claims	Avg Manufacturing Weekly Hours*
2013		
Jan	4,884	40.5
Feb	4,669	40.0
Mar	4,452	40.7
Apr	4,823	40.8
May	4,672	40.6
Jun	4,602	41.1
July	5,220	40.8
Aug	4,585	41.8
Sep	4,598	41.5
Oct	4,805	40.9
Nov	4,786	42.0
Dec	5,054	41.9



2014		
Jan	4,442	42.0 R
Feb	3,775	40.5 P
Mar		
Apr		
May		
Jun		
July		
Aug		
Sep		
Oct		
Nov		
Dec		



* Not seasonally adjusted

P = Preliminary

R = Revised

** Labor-management dispute