



LABOR SITUATION

Office of Research
Sharon M. Palmer, Commissioner

FOR IMMEDIATE RELEASE

November 2014 Data
CT Unemployment Rate = 6.5%
US Unemployment Rate = 5.8%

4,600 jobs added in November; unemployment rate ticks up slightly

WETHERSFIELD, December 18, 2014 – On a seasonally adjusted basis, the preliminary nonfarm job estimate from the U.S. Bureau of Labor Statistics's (BLS) monthly establishment survey show Connecticut added 4,600 jobs (0.27%) in November 2014. The state nonfarm industry has now increased 25,700 positions (1.55%) since November 2013 to a level of 1,687,100 jobs. This is a new employment recovery highpoint. The nonfarm employment gain for October (4,300, 0.26%) was also revised higher by 700 from the initial release.

According to the household survey (Current Population Survey), Connecticut's unemployment rate increased one-tenth of a percentage point in November 2014 to 6.5%, seasonally adjusted. However, this is lower by a full percentage point from the November 2013 unemployment rate of 7.5%. The number of unemployed in the state has declined by 16,034 over the year to 122,637. Connecticut's labor force continues to see strong growth in new entrants / reentrants in November (12,501, 0.7%) and has now increased by 50,893 (2.8%, considered statistically significant) labor force participants over the year.

"Connecticut's recent string of healthier employment gains looks to be attracting many more jobseekers into the state's labor market in the lead-up to the holiday season and holiday hiring appears to be above average," said Andy Condon, Director of the Office of Research. "We are also starting to observe some much improved estimates of private sector wage growth that may be encouraging labor force participation as well."

Nonfarm Jobs (business establishment survey)

Preliminary nonfarm employment estimates indicate 4,600 (0.27%) jobs were added to Connecticut payrolls in November 2014 (seasonally adjusted). Five of the ten major industry *supersectors* added jobs last month. This is the third monthly nonfarm employment gain in a row since an August decline (-1,200) and is the ninth monthly job gain in 2014 (tenth of last 12 months). The yearly nonfarm job growth pace in the state now is calculated at 25,700 (1.55%) since November 2013. The state has added 23,600 jobs (about 2,145 per month) through the first eleven months of the year which is a solid improvement over the 2013 pace of 16,300 (about 1,482 per month) through November.

Connecticut's **private sector** added 4,700 positions (0.3%) in November, which is the tenth consecutive monthly private employment gain in 2014 following the large weather-related job loss last January 2014 (-10,900). Since November 2013, Connecticut has added 25,000 private sector jobs (1.8%, a 2,273 monthly pace).

The five major industry *supersectors* that gained jobs (establishment survey) in November were led by the **professional, scientific, and technical services** (2,800, 1.3%). Especially strong job growth arose from the **administrative and support services** component (2,000, 2.3%) where temporary employment services are located. The **trade, transportation, and utilities (TTU)** *supersector* (2,000, 0.6%) also showed robust job gains in November. The **retail trade** (2,200, 1.2%) segment provided the bulk of the gains and has been strong for the last four months. Holiday hiring appears to be above average at this point. The **financial activities** *supersector* (700, 0.5%) grew in November as the **finance and insurance** (600, 0.5%) component and the **real estate** (100, 0.5%) sector both expanded. Smaller gains of just 100 jobs each were recorded from the **other services** (100, 0.2%) and **leisure and hospitality** (100, 0.1%) *supersectors*. **TTU** remains the best growing *supersector* over the year (8,200, 2.7%) driven by **retail trade** (5,600, 3.0%).

Employment losses in the five declining industry *supersectors* in November were fairly small - fewer than 500 - with the **information** *supersector* (-400, -1.3%) posting the largest job decline. The combined **construction and mining** (-300, -0.5%) *supersector* was also lower. The **manufacturing** *supersector* (-200, -0.1%) was just slightly

down but still remains up over the year (700, 0.4%). The **government** (-100, -0.04%) *supersector* and the **education and health services** *supersector* (-100, -0.03%) both posted small job declines.

Recession recovery: Connecticut has now recovered 93,200 positions, or 78.3% of the 119,100 seasonally adjusted **total nonfarm** jobs that were lost in the state during the March 2008 - February 2010 employment recession. Connecticut's jobs recovery is now 57 months old and is averaging approximately 1,635 jobs per month overall since February 2010. The **private sector** has recovered employment at a faster clip and has now recovered 103,000 (92.0%) of the 112,000 private sector jobs that were lost during the same recessionary downturn (1,807 per month pace). At 1,687,100 overall nonfarm jobs in November 2014, the state needs to reach the 1,713,000 level to start a true nonfarm employment expansion. This will require an additional 25,900 jobs. A total of just 9,000 additional private sector positions are needed to have a fully recovered private sector. The **government** *supersector* has continued to lose net jobs (-9,800) throughout the overall nonfarm employment recovery.

Labor Market Areas (LMAs): The November 2014 preliminary nonfarm job numbers reveal that five of the six major Connecticut Labor Market Areas (Bureau of Labor Statistics-recognized LMAs) had job increases while only the **New Haven LMA** (-100, 0.04%) exhibited a very small decline. The largest labor market in the state, the **Hartford LMA** (2,600, 0.5%) posted the largest regional job gain while the **Bridgeport-Stamford-Norwalk LMA** (2,300, 0.5%) also put up strong November job growth. The **Waterbury LMA** (500, 0.8%) had the best showing in percentage terms for the month while the **Norwich-New London LMA** (300, 0.2%) has experienced four monthly job gains in a row to turn positive over the year (300, 0.2%). The **Danbury LMA** (200, 0.3%) also was positive last month. This now puts all Connecticut BLS-recognized LMAs in the green over the year. *Note: The major Connecticut LMAs are estimated and seasonally adjusted independently from the statewide numbers by the BLS and cover about 90% of the nonfarm employment in the state, so they will not fully sum to the statewide total.*

Hours and Earnings: The **private sector** workweek, not seasonally adjusted, averaged 34.2 hours in November 2014, and is higher by six-tenths of an hour (1.8%) from the year-ago estimate of 33.6 hours. Average hourly earnings at \$28.81, not seasonally adjusted, were up \$1.21, or 4.4%, from last November. The resulting average **private sector** weekly pay was calculated at \$985.30, up \$57.94, or 6.2% over the year. All employee private sector wage estimates have been outpacing inflation the last two months and may be another sign of an improved labor market. The year-to-year change in the Consumer Price Index for All Urban Consumers (CPI-U, U.S. City Average, not seasonally adjusted) in November 2014 was 1.3%. Information for the manufacturing production workweek and earnings can be found in the table section of this release under the "Hours and Earnings" data category. *(Current all-employee private sector hours and earnings estimates can be volatile due to sample response.)*

Labor Force Data (residential household survey)

Connecticut's unemployment rate was calculated at **6.5%** for November 2014 (seasonally adjusted). This is one tenth of a percentage point higher than October 2014 rate, but down a full percentage point from the November 2013 unemployment rate of 7.5%.

Unemployment: Based on the household survey, the number of unemployed, seasonally adjusted, posted an increase of 1,106 (0.9%) over the month to 122,637 in November 2014. On the other hand, the number of unemployed residents has decreased by 16,034 (-11.6%) since November 2013. Connecticut's slight uptick in the unemployment rate last month came about with a very large labor force increase (12,501, 0.7%) which is a tangible indication more residents are out looking for work. Year-to-year labor force growth now measures 50,893 (2.8%). Connecticut's civilian labor force has increased 9 of 11 months in 2014 after bottoming out in this recovery in December 2013 at 1,845,784. The United States unemployment rate was 5.8% in November, unchanged from the October 2014 rate of 5.8%, but lower by one and one-two tenths of a percentage point from the November 2013 rate of 7.0%.

As always, the sample size underlying labor force and unemployment data is very small and caution is advised in interpreting these preliminary estimated trends.

The November 2014 average weekly initial unemployment claims for first-time Connecticut filers (seasonally adjusted) increased over the month by 484 claims (11.8%) to 4,585, but are lower by 201 claims (-4.2%) from November 2013 (4,786).

*The nonfarm employment estimate, derived from a survey of businesses, is a measure of jobs in the state; the unemployment rate, based on a household survey, is a measure of the work status of people who live in Connecticut. Overall, as the national and state economies recover, volatility in monthly numbers can be expected. Additionally, changes in methodology that culminated in March 2011 with the U.S. Department of Labor, Bureau of Labor Statistics assuming complete responsibility for estimating all states' monthly nonfarm job counts, have contributed to the month-to-month variability in the numbers. **Jobs estimates are best understood in the context of their movement over several months rather than observed changes in a single month's estimate.***

Next Connecticut Labor Situation release: Monday, January 26, 2015 (December 2014 data)

Contact: Communications Office

(860) 263-6535

12-18-14

Labor market information is available on the Internet at www.ctdol.state.ct.us/lmi

200 Folly Brook Boulevard, Wethersfield, CT 06109-1114 - www.ct.gov/dol

An Equal Opportunity/Affirmative Action Employer

NONFARM EMPLOYMENT

Jobs - by Place of Work

CONNECTICUT AND THE UNITED STATES - Seasonally Adjusted

	November 2014 P	October 2014 R	September 2014	August 2014	November 2013	Over Month Change	Over Month Rate	Over Year Change	Over Year Rate
CONNECTICUT	1,687,100	1,682,500	1,678,200	1,667,700	1,661,400	4,600	0.3%	25,700	1.5%
Total Private	1,451,400	1,446,700	1,441,100	1,432,000	1,426,400	4,700	0.3%	25,000	1.8%
Goods Producing Industries									
Mining	600	600	600	600	600	0	0.0%	0	0.0%
Construction	56,900	57,200	57,300	57,000	55,200	-300	-0.5%	1,700	3.1%
Manufacturing	163,000	163,200	163,400	163,900	162,300	-200	-0.1%	700	0.4%
Durable Goods	124,800	124,900	125,200	125,900	125,300	-100	-0.1%	-500	-0.4%
Nondurable Goods	38,200	38,300	38,200	38,000	37,000	-100	-0.3%	1,200	3.2%
Service Providing Industries									
Trade, Transportation & Utilities	310,600	308,600	306,800	304,200	302,400	2,000	0.6%	8,200	2.7%
Wholesale	65,100	65,100	66,100	65,500	63,600	0	0.0%	1,500	2.4%
Retail	191,300	189,100	186,600	184,700	185,700	2,200	1.2%	5,600	3.0%
Transp, Warehousing & Utilities	54,200	54,400	54,100	54,000	53,100	-200	-0.4%	1,100	2.1%
Information	31,100	31,500	31,600	31,400	31,500	-400	-1.3%	-400	-1.3%
Financial Activities	130,200	129,500	129,900	130,700	132,100	700	0.5%	-1,900	-1.4%
Finance & Insurance	111,200	110,600	110,900	111,500	112,900	600	0.5%	-1,700	-1.5%
Real Estate, Rental & Leasing	19,000	18,900	19,000	19,200	19,200	100	0.5%	-200	-1.0%
Professional & Business Services	210,600	207,800	206,800	205,100	205,600	2,800	1.3%	5,000	2.4%
Prof, Scientific & Tech Services	92,700	92,000	91,800	91,000	90,800	700	0.8%	1,900	2.1%
Management of Companies	29,100	29,000	28,900	28,700	29,400	100	0.3%	-300	-1.0%
Admn & Support & Waste Mgt Serv	88,800	86,800	86,100	85,400	85,400	2,000	2.3%	3,400	4.0%
Educational & Health Services	331,000	331,100	328,700	325,000	325,900	-100	0.0%	5,100	1.6%
Educational Services	65,100	65,200	63,800	62,800	64,000	-100	-0.2%	1,100	1.7%
Health Care & Social Assistance	265,900	265,900	264,900	262,200	261,900	0	0.0%	4,000	1.5%
Leisure and Hospitality	154,700	154,600	153,500	150,900	149,400	100	0.1%	5,300	3.5%
Arts, Entertainment & Recreation	26,900	25,900	25,500	24,800	25,000	1,000	3.9%	1,900	7.6%
Accommodation & Food Services	127,800	128,700	128,000	126,100	124,400	-900	-0.7%	3,400	2.7%
Other Services	62,700	62,600	62,500	63,200	61,400	100	0.2%	1,300	2.1%
Government**	235,700	235,800	237,100	235,700	235,000	-100	0.0%	700	0.3%
UNITED STATES	140,045,000	139,724,000	139,481,000	139,210,000	137,311,000	321,000	0.2%	2,734,000	2.0%

LABOR MARKET AREAS (LMA)

Labor Market Area employment estimates are made independently of Statewide estimates.

Seasonally Adjusted data	November 2014 P	October 2014 R	September 2014	August 2014	November 2013	Over Month Change	Over Month Rate	Over Year Change	Over Year Rate
Bridgeport-Stamford	422,700	420,400	420,800	419,400	413,800	2,300	0.5%	8,900	2.2%
Danbury	70,500	70,300	70,000	69,500	69,400	200	0.3%	1,100	1.6%
Hartford	557,400	554,800	555,500	553,900	551,800	2,600	0.5%	5,600	1.0%
New Haven	279,000	279,100	278,300	278,100	275,800	-100	0.0%	3,200	1.2%
Norwich-New London	127,800	127,500	126,400	125,400	127,500	300	0.2%	300	0.2%
Waterbury	65,700	65,200	64,700	65,000	65,200	500	0.8%	500	0.8%
<i>Not Seasonally Adjusted data (Non-Classified Areas, State estimated not BLS)</i>									
Enfield	45,000	44,800	44,700	43,800	44,200	200	0.4%	800	1.8%
Torrington	37,000	37,200	37,100	36,700	36,800	-200	-0.5%	200	0.5%
Willimantic-Danielson	38,100	38,400	38,100	37,500	37,900	-300	-0.8%	200	0.5%

* Less than 0.05% ** Includes Native American tribal government employment

P = Preliminary

R = Revised

Starting with March, 2011, our monthly statewide and major LMA nonfarm job estimates have been taken over by the US Department of Labor Bureau of Labor Statistics. This is the final phase of transition in this program, which began in 2008. As a result of changes in the estimation procedures, you are likely to see more variability in month-to-month estimates of job counts. Caution should be used in interpreting any single month's estimate. The data are best interpreted to identify trends and cycles over several months and quarters. If you have any questions about these changes, please email us at: dol.lmi@ct.gov.

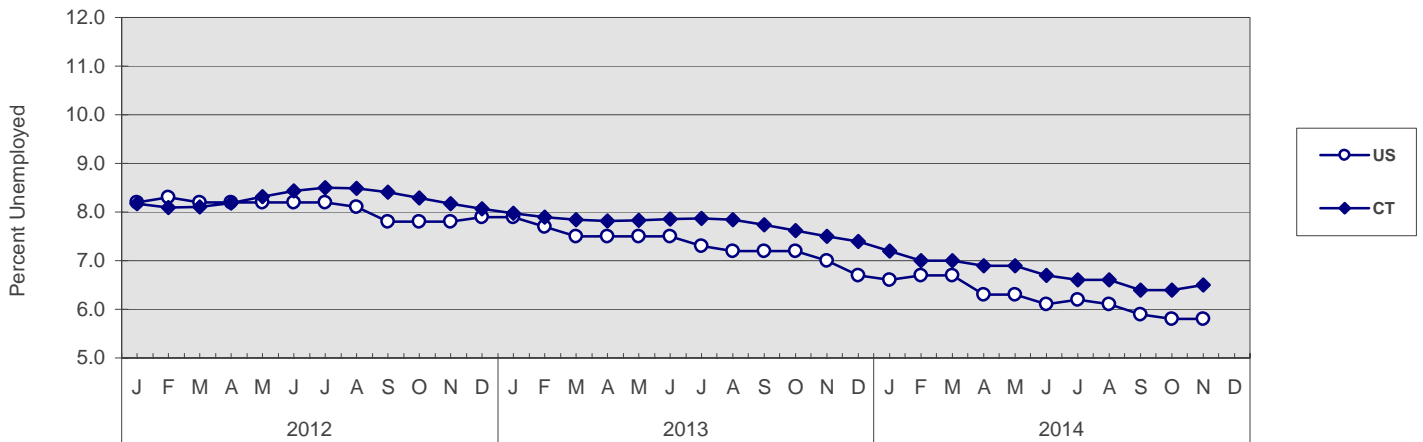
UNEMPLOYMENT

Persons Unemployed - by Place of Residence

CONNECTICUT AND THE UNITED STATES - Seasonally Adjusted

	Nov. 2014 P		Nov. 2013		Change		Oct. 2014 R	
	Number	Rate	Number	Rate	Number	Points	Number	Rate
CONNECTICUT								
Unemployed	122,600	6.5	138,700	7.5	-16,100	-1.0	121,500	6.4
Labor Force	1,898,800		1,847,900		50,900		1,886,300	
UNITED STATES								
Unemployed	9,110,000	5.8	10,841,000	7.0	-1,731,000	-1.2	8,995,000	5.8
Labor Force	156,397,000		155,284,000		1,113,000		156,278,000	

U.S. AND CONNECTICUT UNEMPLOYMENT RATES - Seasonally Adjusted 2012 - 2014



LABOR MARKET AREAS - Not Seasonally Adjusted

	Nov. 2014 P		Nov. 2013		Change		Oct. 2014 R	
	Number	Rate	Number	Rate	Number	Points	Number	Rate
Bridgeport-Stamford								
Danbury								
Enfield								
Hartford								
New Haven								
Norwich-New Britain								
Torrington								
Waterbury								
Willimantic-Danielson								
CONNECTICUT	118,300	6.2	129,200	7.0	-10,900	-0.8	119,100	6.3
UNITED STATES	8,630,000	5.5	10,271,000	6.6	-1,641,000	-1.1	8,680,000	5.5

Release of the November 2014 sub-state labor force data is restricted by the U.S. Bureau of Labor Statistics until Friday, December 19, 2014.

An updated *Connecticut Labor Situation* with these data will be available on our website at that time at:

<http://www1.ctdol.state.ct.us/lmi/laborsit.pdf>.

P = Preliminary

R = Revised

Labor force data included in this publication are developed in cooperation with the U.S. Department of Labor, Bureau of Labor Statistics.

UNEMPLOYMENT RATES

Not Seasonally Adjusted

LABOR MARKET AREAS

Release of the November 2014 sub-state labor force data is restricted by the U.S. Bureau of Labor Statistics until Friday, December 19, 2014.

An updated *Connecticut Labor Situation* with these data will be available on our website at that time at:

<http://www1.ctdol.state.ct.us/lmi/laborsit.pdf>.

HOURS AND EARNINGS

CONNECTICUT Statewide - *Not Seasonally Adjusted*

	Average Weekly Earnings				Average Weekly Hours				Average Hourly Earnings			
	Nov. 2014 P	Nov. 2013	Change over Yr.	Oct. 2014 R	Nov. 2014 P	Nov. 2013	Change over Yr.	Oct. 2014 R	Nov. 2014 P	Nov. 2013	Change over Yr.	Oct. 2014 R
Private Industry All Employees	\$985.30	\$927.36	\$57.94	\$960.73	34.2	33.6	0.6	33.9	\$28.81	\$27.60	\$1.21	\$28.34
Manufacturing*												
Production Workers	\$979.22	\$900.06	\$79.16	\$941.72	41.3	42.0	-0.7	40.4	\$23.71	\$21.43	\$2.28	\$23.31

* Production worker data have been impacted by the loss of a large, high-paying manufacturer from the monthly sample.

P = Preliminary

R = Revised

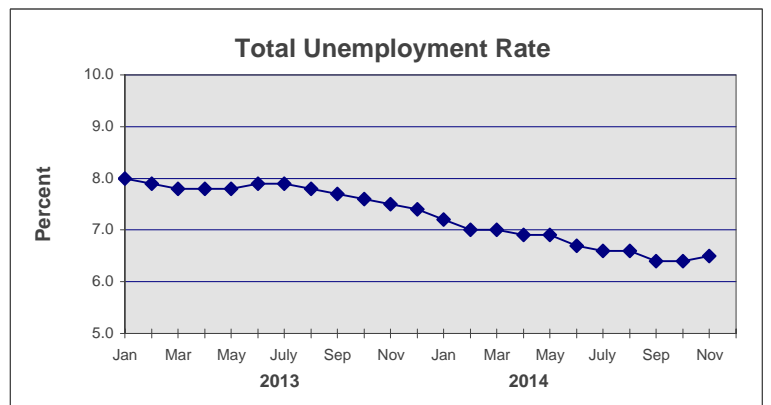
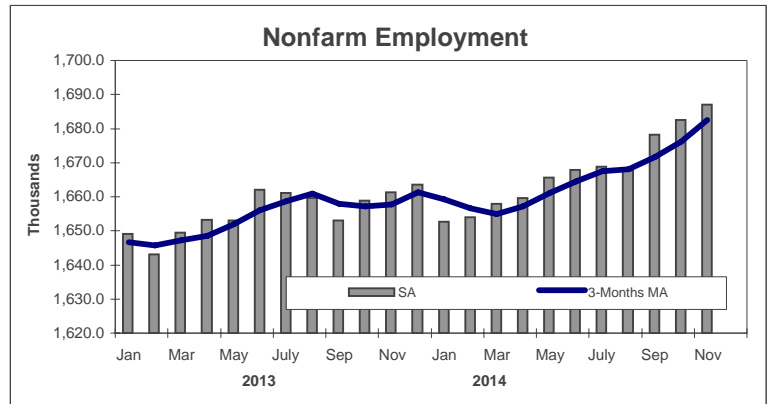
Hours and earnings are also developed for the state's major industry sectors and Labor Market Areas. They can be found on our website at: www.ctdol.state.ct.us/lmi.

TRENDS

Seasonally Adjusted

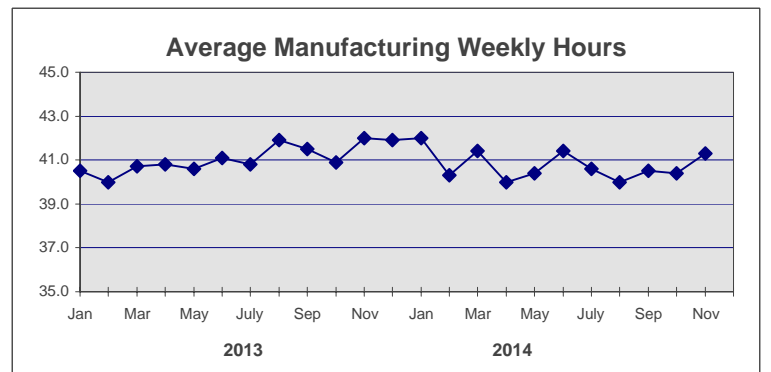
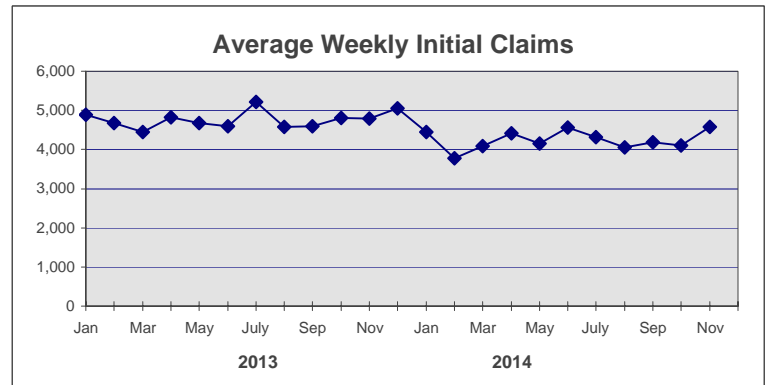
	Nonfarm Employment (000s)	Total Unemployment Rate
2013		
Jan	1,649.2	8.0
Feb	1,643.1	7.9
Mar	1,649.5	7.8
Apr	1,653.3	7.8
May	1,653.0	7.8
Jun	1,662.1	7.9
July	1,661.1	7.9
Aug	1,659.7	7.8
Sep	1,653.1	7.7
Oct	1,658.8	7.6
Nov	1,661.4	7.5
Dec	1,663.5	7.4

2014		
Jan	1,652.6	7.2
Feb	1,654.0	7.0
Mar	1,658.0	7.0
Apr	1,659.7	6.9
May	1,665.7	6.9
Jun	1,667.9	6.7
July	1,668.9	6.6
Aug	1,667.7	6.6
Sep	1,678.2	6.4
Oct	1,682.5 R	6.4 R
Nov	1,687.1 P	6.5 P
Dec		



	Avg Weekly Initial Claims	Avg Manufacturing Weekly Hours*
2013		
Jan	4,884	40.5
Feb	4,669	40.0
Mar	4,452	40.7
Apr	4,823	40.8
May	4,672	40.6
Jun	4,602	41.1
July	5,220	40.8
Aug	4,585	41.9
Sep	4,598	41.5
Oct	4,805	40.9
Nov	4,786	42.0
Dec	5,054	41.9

2014		
Jan	4,442	42.0
Feb	3,775	40.3
Mar	4,089	41.4
Apr	4,412	40.0
May	4,150	40.4
Jun	4,556	41.4
July	4,311	40.6
Aug	4,052	40.0
Sep	4,190	40.5
Oct	4,101	40.4 R
Nov	4,585	41.3 P
Dec		



* Not seasonally adjusted

P = Preliminary

R = Revised

** Labor-management dispute