



# LABOR SITUATION

Office of Research

**FOR IMMEDIATE RELEASE**

May 2011 Data

CT Unemployment Rate = 9.1%

National Unemployment Rate = 9.1%

## **State Drops 2,900 Jobs Following Month of Growth; Unemployment Rate Unchanged at 9.1 Percent**

WETHERSFIELD, June 16, 2011 – Connecticut continued its seesaw pattern of recovery, dropping 2,900 jobs in May after adjusted numbers showed a gain of 8,400 jobs the month before. This brings the state's nonfarm employment to 1,622,700, which on a seasonally adjusted basis, represents an increase of 9,400 jobs over the year when nonfarm employment totaled 1,613,300. The state's unemployment rate remained steady at 9.1 percent, which parallels that of the national rate.

"May's numbers proved disappointing – we lost some of the jobs we gained in April and the unemployment rate remained stuck at 9.1 percent, mostly unchanged for over a year," noted Labor Statistics Supervisor Salvatore DiPillo. "Like the nation, Connecticut is struggling to regain jobs we lost during the recession and we're seeing a slowdown in job growth. So far this year, we're averaging fewer monthly job gains than we did in 2010 when the recovery first began."

### **Nonfarm Employment**

May's job numbers showed losses in several industry sectors. The largest were in the **trade, transportation and utilities** and **education and health services** sectors, each down 1,900 jobs; **the professional and business services** sector, down 1,500 jobs; and the **leisure and hospitality** sector, down by 1,000. There were gains in the **construction, information, other services** and **government** sectors. Employment in the **financial activities** sectors was unchanged over the month. Despite May's losses, all but two of the major industry sectors added jobs over the year.

Overall, as the national and state economies recover, volatility in monthly numbers can be expected. Additionally, changes in methodology that culminated in March 2011 with the U.S. Department of Labor, Bureau of Labor Statistics assuming complete responsibility for estimating all states' monthly nonfarm job counts, have contributed to the month-to-month variability in the numbers. Jobs estimates are best understood in the context of their movement over several months rather than observed changes in a single month's estimate.

Among those sectors that have added employment over the year is the **educational and health services** sector. This sector showed resilience during the recession and continues to add jobs. Since last May **educational and health services** has added 7,100 jobs, and now totals 313,700. Most of this sector's over-the-year gains were in the **healthcare and social assistance** industries.

The **professional and business services**, which after losing nearly 11 percent of its employment between the beginning of 2008 and the fall of 2009, has been adding jobs in most months since. Over the past year, the sector has added 3,700 jobs to now total 194,500. Most of these additional positions are in the **employment services** industry, including **temporary help agencies**.

The **leisure and hospitality** sector added 1,100 jobs over the past year, with employment now at 134,100. All of the gains over the past year were in the **accommodations and food services** industries. This sector overall continues to rebound from the recession fairly well in Connecticut.

The **manufacturing** sector experienced some growth throughout much of 2010 after years of a long and steady decline. This sector has added 1,400 jobs since last May, and now employs 167,100 workers. Over-the-year gains were seen in both the **durable goods** and **nondurable goods** industries that comprise the **manufacturing** sector.

The **construction** sector, which began losing jobs in July of 2007, lost 20,500, or 30 percent of its jobs between that time and December 2010. Since then, the sector has seen a net gain of 1,500 jobs and now totals 50,100.

Employment in the **financial activities** sector peaked in January 2007, and lost 11,000 jobs before starting to show some gains in the summer of 2010. Employment in this sector has since ebbed and at 134,300 in May, is down 400 jobs from a year ago.

The **other services** sector, which includes **repair and maintenance services, personal and laundry services** and **religious, grantmaking, civic, and professional organizations**, saw its employment peak in December 2006, and lost 6.8 percent of its jobs before turning around in February 2010. In the past year this sector has added 700 jobs, and now totals 61,300.

The **government** sector's employment had a temporary boost in the spring of 2010 with the hiring of several thousand federal Census workers, but their work was mostly completed by fall. The number of **federal** employees, at 17,800 in May, was down 6,800 from May 2010 – the result of the large number of temporary Census workers hired last year. Employment in **state government**, at 68,600, is up 1,500 from May 2010, while **local government** (which includes **tribal governments** and their **gaming establishments**) was unchanged over the year. Employment in **local government** peaked in May 2008, and since then is down 5,500 to total 158,000 jobs.

The **trade, transportation and utilities** sector lost 27,500 positions, or 8.7 percent of its employment, between January 2008 and February 2010. The sector added jobs in much of 2010 and added 3,100 since the beginning of 2011. Employment in this sector now totals 290,600 with the sector's growth over the past year occurring in **wholesale** and **retail trade** industries.

The **information** sector, which includes **publishing industries** including **newspapers**, began losing jobs in 2000 – well before the current recession began. In the past year losses have leveled off, and with 32,000 jobs in April, this sector is up 200 positions from a year earlier.

**Labor Market Areas (LMAs):** In the past year there have been job gains in several of Connecticut's labor market areas. The Bridgeport-Stamford LMA added 3,900 jobs; the Hartford LMA added 3,800; and the Waterbury LMA added 1,200. There were job losses in the Norwich-New London LMA, down 1,200, while employment in the New Haven LMA was mostly unchanged.

**Hours and Earnings:** The workweek for employees in the private sector, not seasonally adjusted, averaged 34.0 hours in May, up 0.5 hours from the May 2010 figure of 33.5 hours. Average hourly earnings at \$28.25, not seasonally adjusted, were down \$0.18 from a year ago at this time when the number was \$28.43. This resulted in an average weekly wage for private sector employees of \$960.50, up \$8.09 over the year, representing an increase of 0.8 percent. Information for the manufacturing production workweek and earnings can be found in the table section of this release under the "Hours and Earnings" data category.

### Labor Force Data

Connecticut's seasonally adjusted labor force numbered 1,894,100 in May 2011, with 3,900 fewer employed people and 900 fewer unemployed people than there were in May 2010.

**Unemployment:** Based on the household survey, the estimate of people unemployed, seasonally adjusted, was up 100 from April at 172,500, and the unemployment rate remained at 9.1 percent. This is the same as the national rate of 9.1 percent. Compared to the state's unemployment rate of 9.1 percent in May 2010, this month's rate represents no change from a year ago. Average weekly initial unemployment claims in May 2011 for first-time filers increased over the month by 116 to 5,378 and were down 1.6 percent, or 89 claims from this time last year.

Release of May 2011 labor force data for the labor market areas, cities and towns is restricted by the U.S. Bureau of Labor Statistics until tomorrow, June 17. These data will be available on our website tomorrow at: <http://www1.ctdol.state.ct.us/lmi/LAUS/default.asp>. An updated **Connecticut Labor Situation** publication including this data will be available at: <http://www1.ctdol.state.ct.us/lmi/laborsit.pdf>.

*The nonfarm employment estimate, derived from a survey of businesses, is a measure of jobs in the state; the unemployment rate, based on a household survey, is a measure of the work status of people who live in Connecticut.*

Contact: Communications Office

(860) 263-6535

6-16-11

Labor market information is available on the Internet at [www.ctdol.state.ct.us/lmi](http://www.ctdol.state.ct.us/lmi)  
200 Folly Brook Boulevard, Wethersfield, CT 06109-1114 - [www.ct.gov/dol](http://www.ct.gov/dol)  
*An Equal Opportunity/Affirmative Action Employer*

# NONFARM EMPLOYMENT

## Jobs - by Place of Work

### CONNECTICUT AND THE UNITED STATES - Seasonally Adjusted

	May 2011 P	Apr. 2011 R	Mar. 2011	Feb. 2011	May 2010	Over Month Change	Rate	Over Year Change	Rate
<b>CONNECTICUT</b>	<b>1,622,700</b>	<b>1,625,600</b>	<b>1,617,200</b>	<b>1,623,800</b>	<b>1,613,300</b>	<b>-2,900</b>	<b>-0.2%</b>	<b>9,400</b>	<b>0.6%</b>
<b>Goods Producing Industries</b>									
Construction	50,100	49,800	50,900	52,600	49,900	300	0.6%	200	0.4%
Manufacturing	167,100	167,300	166,200	166,300	165,700	-200	-0.1%	1,400	0.8%
Durable Goods	127,900	128,700	127,600	127,500	127,300	-800	-0.6%	600	0.5%
Nondurable Goods	39,200	38,600	38,600	38,800	38,400	600	1.6%	800	2.1%
<b>Service Providing Industries</b>									
Trade, Transportation & Utilities	290,600	292,500	288,300	287,700	289,900	-1,900	-0.6%	700	0.2%
Wholesale	63,500	63,800	63,400	63,000	62,700	-300	-0.5%	800	1.3%
Retail	178,900	180,200	176,900	176,900	178,400	-1,300	-0.7%	500	0.3%
Transp, Warehousing & Utilities	48,200	48,500	48,000	47,800	48,800	-300	-0.6%	-600	-1.2%
Information	32,000	31,500	31,400	31,600	31,800	500	1.6%	200	0.6%
Financial Activities	134,300	134,300	135,600	136,200	134,700	0	0.0%	-400	-0.3%
Finance & Insurance	115,300	115,300	116,500	116,900	115,700	0	0.0%	-400	-0.3%
Real Estate, Rental & Leasing	19,000	19,000	19,100	19,300	19,000	0	0.0%	0	0.0%
Professional & Business Services	194,500	196,000	195,300	199,300	190,800	-1,500	-0.8%	3,700	1.9%
Prof, Scientific & Tech Services	87,100	88,100	88,200	87,900	86,000	-1,000	-1.1%	1,100	1.3%
Management of Companies	25,900	25,700	26,000	26,000	26,300	200	0.8%	-400	-1.5%
Admn & Support & Waste Mgt Serv	81,500	82,200	81,100	85,400	78,500	-700	-0.9%	3,000	3.8%
Educational & Health Services	313,700	315,600	311,400	311,900	306,600	-1,900	-0.6%	7,100	2.3%
Educational Services	59,400	60,800	59,600	58,700	59,400	-1,400	-2.3%	0	0.0%
Health Care & Social Assistance	254,300	254,800	251,800	253,200	247,200	-500	-0.2%	7,100	2.9%
Leisure and Hospitality	134,100	135,100	133,100	133,600	133,000	-1,000	-0.7%	1,100	0.8%
Arts, Entertainment & Recreation	22,900	24,100	24,000	23,900	23,300	-1,200	-5.0%	-400	-1.7%
Accommodation & Food Services	111,200	111,000	109,100	109,700	109,700	200	0.2%	1,500	1.4%
Other Services	61,300	60,900	60,400	60,700	60,600	400	0.7%	700	1.2%
Government**	244,400	242,100	244,200	243,500	249,700	2,300	1.0%	-5,300	-2.1%
<b>UNITED STATES</b>	<b>131,043,000</b>	<b>130,989,000</b>	<b>130,757,000</b>	<b>130,563,000</b>	<b>130,173,000</b>	<b>54,000</b>	<b>0.0% *</b>	<b>870,000</b>	<b>0.7%</b>

### LABOR MARKET AREAS (LMA)

Labor Market Area employment estimates are made independently of Statewide estimates.

	May 2011 P	Apr. 2011 R	Mar. 2011	Feb. 2011	May 2010	Over Month Change	Rate	Over Year Change	Rate
<i>Seasonally Adjusted data</i>									
<b>Bridgeport-Stamford</b>	401,700	400,700	399,100	400,700	397,800	1,000	0.2%	3,900	1.0%
<b>Danbury</b>	65,000	65,200	65,300	66,500	64,800	-200	-0.3%	200	0.3%
<b>Hartford</b>	536,400	541,200	538,200	538,000	532,600	-4,800	-0.9%	3,800	0.7%
<b>New Haven</b>	264,800	265,000	261,900	262,900	264,900	-200	-0.1%	-100	0.0% *
<b>Norwich-New London</b>	127,700	128,300	127,100	128,100	130,000	-600	-0.5%	-2,300	-1.8%
<b>Waterbury</b>	63,300	63,100	62,200	62,200	62,100	200	0.3%	1,200	1.9%
<i>Not Seasonally Adjusted data</i>									
<b>Enfield</b>	44,700	44,700	44,100	44,000	44,100	0	0.0%	600	1.4%
<b>Torrington</b>	35,800	34,600	34,400	33,700	35,700	1,200	3.5%	100	0.3%
<b>Willimantic-Danielson</b>	35,700	35,200	35,000	35,000	35,800	500	1.4%	-100	-0.3%

\* Less than 0.05% \*\* Includes Native American tribal government employment

P = Preliminary

R = Revised

Starting with March, 2011, our monthly statewide and major LMA nonfarm job estimates have been taken over by the US Department of Labor Bureau of Labor Statistics. This is the final phase of transition in this program, which began in 2008. As a result of changes in the estimation procedures, you are likely to see more variability in month-to-month estimates of job counts. Caution should be used in interpreting any single month's estimate. The data are best interpreted to identify trends and cycles over several months and quarters. If you have any questions about these changes, please email us at: [dol.lmi@ct.gov](mailto:dol.lmi@ct.gov).

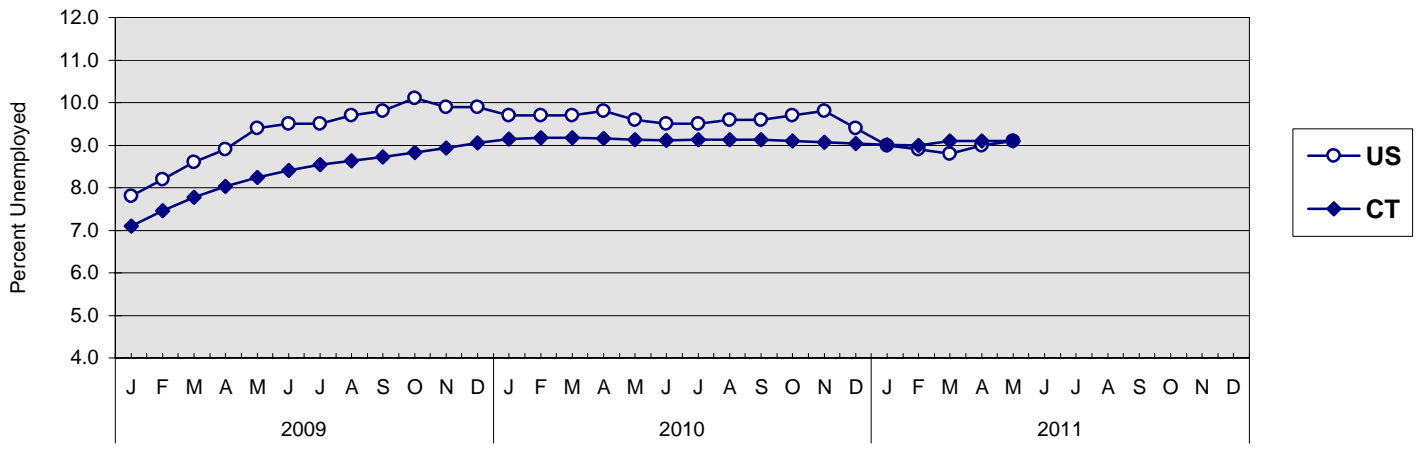
# UNEMPLOYMENT

## Persons Unemployed - by Place of Residence

### CONNECTICUT AND THE UNITED STATES - Seasonally Adjusted

	May 2011 P		May 2010		Change		April 2011 R	
	Number	Rate	Number	Rate	Number	Points	Number	Rate
<b>CONNECTICUT</b>								
Unemployed	172,500	9.1	173,400	9.1	-900	0.0	172,400	9.1
Labor Force	1,894,100		1,898,900		-4,800		1,898,600	
<b>UNITED STATES</b>								
Unemployed	13,914,000	9.1	14,884,000	9.6	-970,000	-0.5	13,747,000	9.0
Labor Force	153,693,000		154,237,000		-544,000		153,421,000	

### U.S. AND CONNECTICUT UNEMPLOYMENT RATES - Seasonally Adjusted 2009 - 2011



### LABOR MARKET AREAS - Not Seasonally Adjusted

	May 2011 P		May 2010		Change		April 2011 R	
	Number	Rate	Number	Rate	Number	Points	Number	Rate
Bridgeport-Stamford	40,600	8.5	39,900	8.3	700	0.2	39,700	8.3
Danbury	6,600	7.2	6,900	7.5	-300	-0.3	6,600	7.3
Enfield	4,400	8.6	4,300	8.6	100	0.0	4,600	9.0
Hartford	54,100	9.1	54,600	9.1	-500	0.0	53,300	8.9
New Haven	29,800	9.5	29,200	9.2	600	0.3	29,400	9.4
Norwich-New London	13,500	9.0	13,300	8.6	200	0.4	13,200	8.8
Torrington	4,700	8.5	4,800	8.7	-100	-0.2	4,700	8.7
Waterbury	12,200	11.9	12,200	11.9	0	0.0	12,100	11.9
Willimantic-Danielson	5,900	10.2	6,000	10.2	-100	0.0	5,900	10.2
<b>CONNECTICUT</b>	<b>170,700</b>	<b>9.1</b>	<b>170,200</b>	<b>9.0</b>	<b>500</b>	<b>0.1</b>	<b>168,500</b>	<b>9.0</b>
<b>UNITED STATES</b>	<b>13,421,000</b>	<b>8.7</b>	<b>14,369,000</b>	<b>9.3</b>	<b>-948,000</b>	<b>-0.6</b>	<b>13,237,000</b>	<b>8.7</b>

P = Preliminary

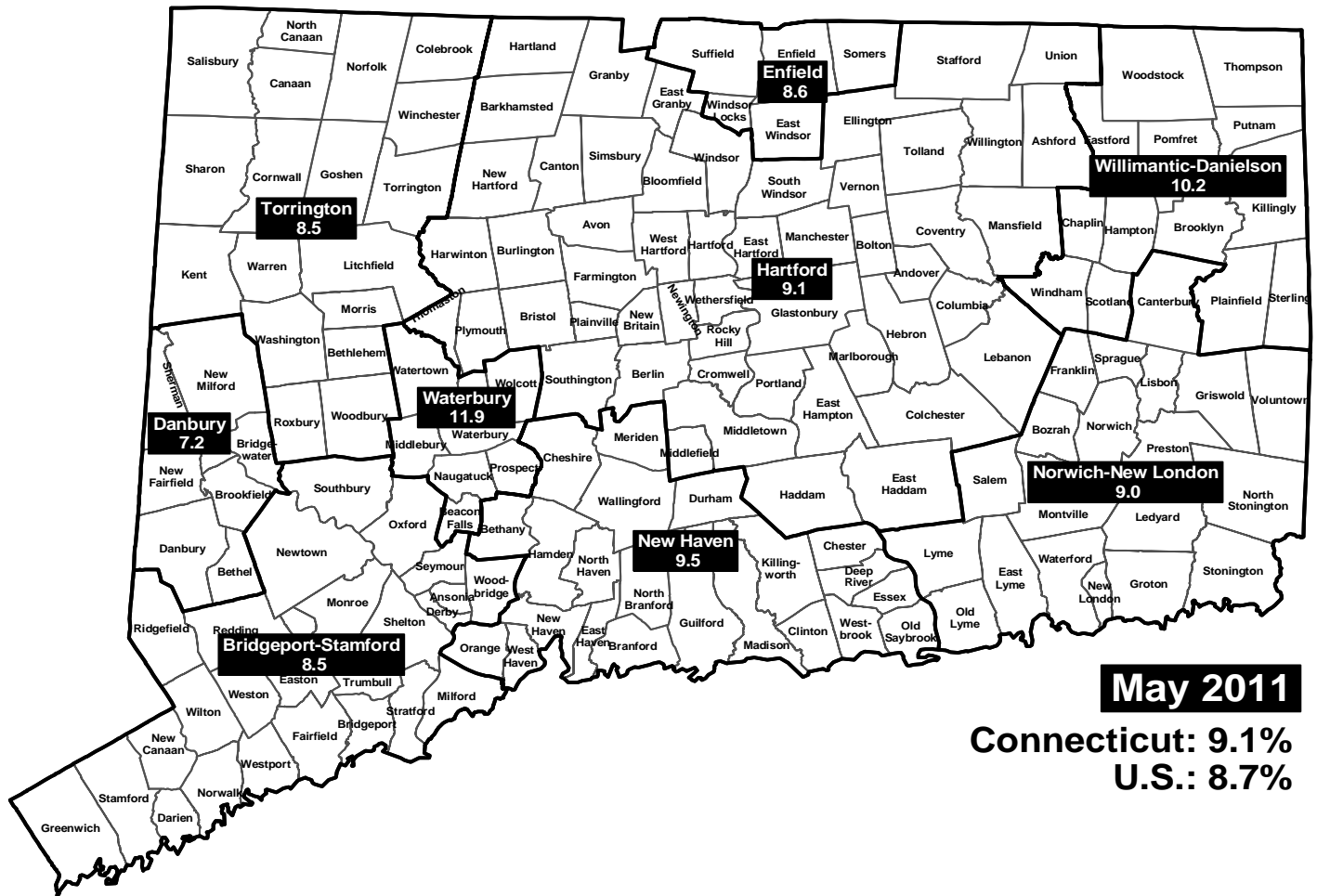
R = Revised

Labor force data included in this publication are developed in cooperation with the U.S. Department of Labor, Bureau of Labor Statistics.

# UNEMPLOYMENT RATES

Not Seasonally Adjusted

## LABOR MARKET AREAS



# HOURS AND EARNINGS

## CONNECTICUT Statewide - Not Seasonally Adjusted

	Average Weekly Earnings				Average Weekly Hours				Average Hourly Earnings			
	May 2011 P	May 2010	Change over Yr.	Apr. 2011 R	May 2011 P	May 2010	Change over Yr.	Apr. 2011 R	May 2011 P	May 2010	Change over Yr.	Apr. 2011 R
<b>Private Industry All Employees</b>	\$960.50	\$952.41	\$8.09	\$950.68	34.0	33.5	0.5	33.7	\$28.25	\$28.43	-\$0.18	\$28.21
<b>Manufacturing Production Workers</b>	\$986.98	\$970.42	\$16.56	\$1,003.66	40.7	41.4	-0.7	40.7	\$24.25	\$23.44	\$0.81	\$24.66

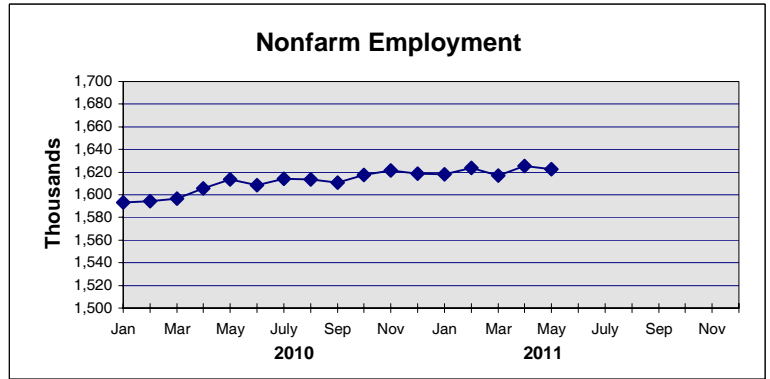
P = Preliminary R = Revised

Hours and earnings are also developed for the state's major industry sectors and Labor Market Areas. They can be found on our website at: [www.ctdol.state.ct.us/lmi](http://www.ctdol.state.ct.us/lmi).

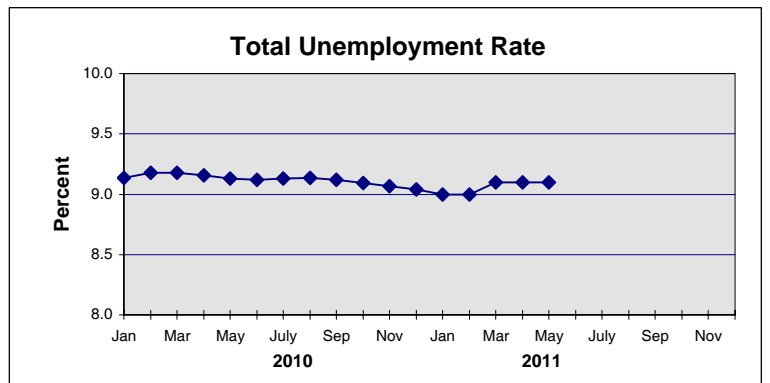
# TRENDS

## Seasonally Adjusted

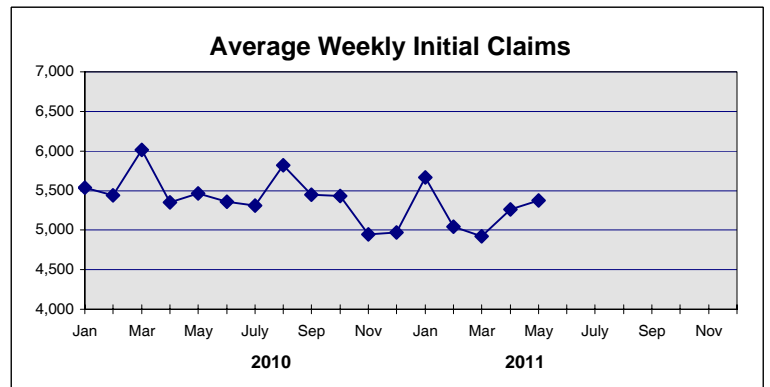
	Nonfarm Employment (000s)	Total Unemployment Rate
<b>2010</b>		
Jan	1,593.5	9.1
Feb	1,594.3	9.2
Mar	1,596.7	9.2
Apr	1,605.8	9.2
May	1,613.3	9.1
Jun	1,608.2	9.1
July	1,614.4	9.1
Aug	1,613.3	9.1
Sep	1,610.5	9.1
Oct	1,617.5	9.1
Nov	1,621.2	9.1
Dec	1,618.8	9.0



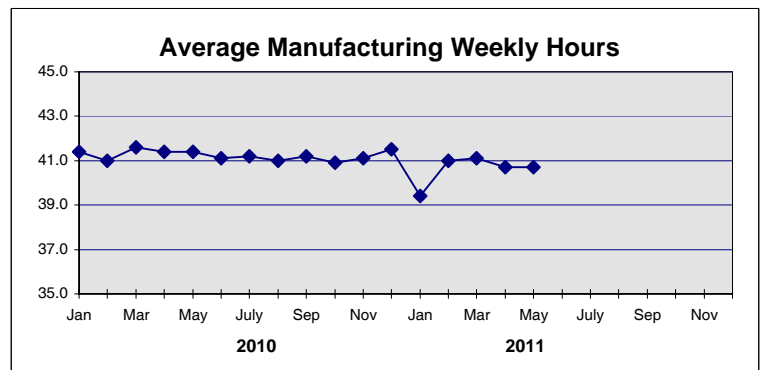
<b>2011</b>		
Jan	1,617.8	9.0
Feb	1,623.8	9.0
Mar	1,617.2	9.1
Apr	1,625.6 R	9.1 R
May	1,622.7 P	9.1 P
Jun		
July		
Aug		
Sep		
Oct		
Nov		
Dec		



	Avg Weekly Initial Claims	Avg Manufacturing Weekly Hours*
<b>2010</b>		
Jan	5,539	41.4
Feb	5,443	41.0
Mar	6,011	41.6
Apr	5,351	41.4
May	5,467	41.4
Jun	5,357	41.1
July	5,313	41.2
Aug	5,821	41.0
Sep	5,450	41.2
Oct	5,432	40.9
Nov	4,948	41.1
Dec	4,972	41.5



<b>2011</b>		
Jan	5,665	39.4
Feb	5,046	41.0
Mar	4,924	41.1
Apr	5,262	40.7 R
May	5,378	40.7 P
Jun		
July		
Aug		
Sep		
Oct		
Nov		
Dec		



\* Not seasonally adjusted

P = Preliminary

R = Revised

\*\* Labor-management dispute