

Per Capita Income

	CT	U.S.
2009 Per Capita Income	\$55,063	\$39,626
2008 Per Capita Income	\$56,272	\$40,208
Net Change	-\$1,209	-\$582
% Change	-2.2%	-1.5%

Source: Bureau of Economic Analysis, Sept.2010

Consumer Price Index All Urban Consumers (1982-84=100)

	Mar 2011	Mar 2010	Feb 2011
All items	223.5	217.6	221.3
% change		2.7%	0.99%

Connecticut Population

July 2008 Estimate	3,501,252
2000 Census*	3,405,604
Change from 2000	95,648
% Change from 2000	2.8%

*Corrected count

Source: U.S. Census Bureau

Connecticut Employment Projections

Total Employment		
2018:	1,901,637	
2008:	1,818,684	
2008-18 change:	82,953	4.5%

Connecticut Business Starts & Terminations

	Record Date	Current Level	Y/Y % chg
STARTS			
Secretary of the State*	Feb 2011	2,030	-0.1%
Department of Labor**	3Q2010	1,500	-3.4%
TERMINATIONS			
Secretary of the State	Feb 2011	797	5.7%
Department of Labor	3Q2010	1,415	-18.3%

*CT SOTS - corporations and other legal entities

**CT DOL - unemployment insurance program registrations

Unemployment Benefits

Average weekly benefit: \$296

Maximum weekly benefit: \$555 plus \$15 for each dependent (up to 5)

Average duration of unemployment (04/10-3/11): 20.1 weeks

Average Weekly Initial Claims (Not Seasonally Adjusted)

Mar 2011	Mar 2010	Feb 2011
4,247	5,107	5,804

UI Program Financial Data

	Avg. Weekly Insured Unemployed	Unemployment Benefits Paid*	Employer Contributions Collected
Mar 2011	67,799	\$80,954,000	\$696,000
Mar 2010	86,044	\$99,884,000	\$661,000

* attributable to contributing employers

For 12-month period ending
March 31, 2011 (4/10-3/11)
TAXABLE EMPLOYERS ONLY
Regular UI Benefits Paid: **\$897,996,000**
Contributions: **\$645,805,000**
as of March 31, 2011
UC Trust Fund Reserve: **\$37,000,000**

Connecticut Department of Labor Office Locations

Bridgeport	2 Lafayette Square	(203) 455-2700
Danbury	152 West St.	(203) 731-2929
Danielson	95 Westcott Rd.	(860) 779-5850
Enfield	620 Enfield St.	(860) 741-4295
Hamden	37 Mame St.	(203) 859-3200
Hartford	3580 Main St.	(860) 256-3700
Meriden	85 West Main St.	(203) 238-6148
Middletown	645 South Main St.	(860) 754-5000
New Britain	260 Lafayette St.	(860) 827-6200
New London	Shaw's Cove Six	(860) 439-7400
Norwich	113 Salem Tpke., North Bldg., Ste. 200	(860) 859-5600
Torrington	KMart Plaza, 685 Main St.	(860) 496-3300
Waterbury	249 Thomaston Ave.	(203) 437-3380
Willimantic	1320 Main St., Tyler Square	(860) 465-2120



CONNECTICUT LABOR MARKET INFORMATION

at-a-glance

Data for

March 2011



www.ct.gov/dol
Labor Market Information

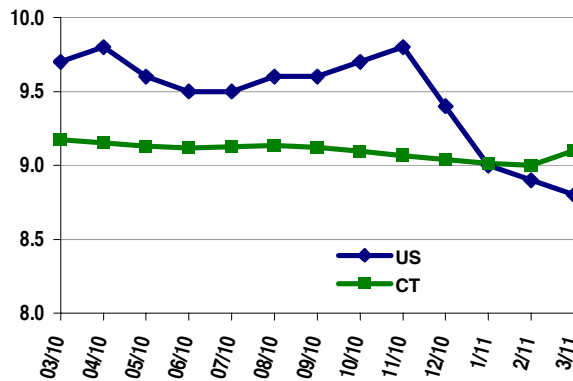
Connecticut Department of Labor
Office of Research
200 Folly Brook Boulevard
Wethersfield, CT 06109
860-263-6275
dol.lmi@ct.gov

Labor Force Data (Seasonally Adjusted)

	Mar 2011	Mar 2010	Feb 2011
CONNECTICUT			
Civilian Labor Force*	1,989,000	1,898,500	1,896,800
Employed	1,726,000	1,724,300	1,725,400
Unemployed	171,900	174,200	171,400
Unemployment Rate	9.1%	9.2%	9.0%
U.S. Unemployment Rate	8.8%	9.7%	8.9%

*Totals may not add up due to rounding

Unemployment Rate: Connecticut and U.S. March 2010 - March 2011 (Seasonally Adjusted)



Area Labor Force & Unemployment Rates (Not Seasonally Adjusted)

Labor Market Area	Mar 2011		Mar 2010		Feb 2011	
	LF	UR	LF	UR	LF	UR
CONNECTICUT	174,900	9.3	178,000	9.4	180,900	9.6
Bridgeport-Stamford	41,500	8.7	41,200	8.7	43,000	9.0
Danbury	7,000	7.7	7,400	8.2	7,300	8.1
Enfield	4,100	8.2	4,400	8.8	4,300	8.7
Hartford	56,000	9.3	57,800	9.6	57,600	9.6
New Haven	30,300	9.6	29,900	9.5	31,300	10.0
Norwich-New London	13,800	9.2	13,800	9.1	14,400	9.6
Torrington	5,200	9.5	5,500	10.1	5,400	10.0
Waterbury	12,500	12.2	13,000	12.7	12,900	12.6
Willimantic-Danielson	6,000	10.2	6,400	10.8	6,200	10.7

Nonfarm Employment by Industry

	seasonally adjusted (in 000s)		Change Y/Y		Feb 2011
	Mar 2011	Mar 2010	#	%	
CONNECTICUT	1,617.8	1,596.7	21.1	1.3%	1,623.8
Goods Producing Industries					
Construction	51.0	49.8	1.2	2.4%	52.6
Manufacturing	166.1	165.2	0.9	0.5%	166.3
Service Providing Industries					
Trade, Transp & Utilities	287.9	288.2	-0.3	-0.1%	287.7
Information	31.4	31.8	-0.4	-1.3%	31.6
Financial Activities	136.0	134.9	1.1	0.8%	136.2
Prof & Business Svcs	195.6	186.4	9.2	4.9%	199.3
Education & Health Svcs	311.7	304.3	7.4	2.4%	311.9
Leisure & Hospitality	132.6	131.6	1.0	0.8%	133.6
Other Services	60.9	60.3	0.6	1.0%	60.7
Government*	244.1	243.7	0.4	0.2%	243.5

* Includes Native American tribal government employment

Nonfarm Employment by Labor Market Area

Labor Market Area	seasonally adjusted		Change Y/Y		Feb 2011
	Mar 2011	Mar 2010	#	%	
Bridgeport-Stamford	399,600	393,500	-1,100	-0.3%	400,700
Danbury	65,100	64,300	-1,400	-2.1%	66,500
Hartford	538,600	530,100	600	0.1%	538,000
New Haven	261,900	263,000	-1,000	-0.4%	262,900
Norwich-New London	127,100	129,300	-1,000	-0.8%	128,100
Waterbury	62,600	61,600	400	0.6%	62,200

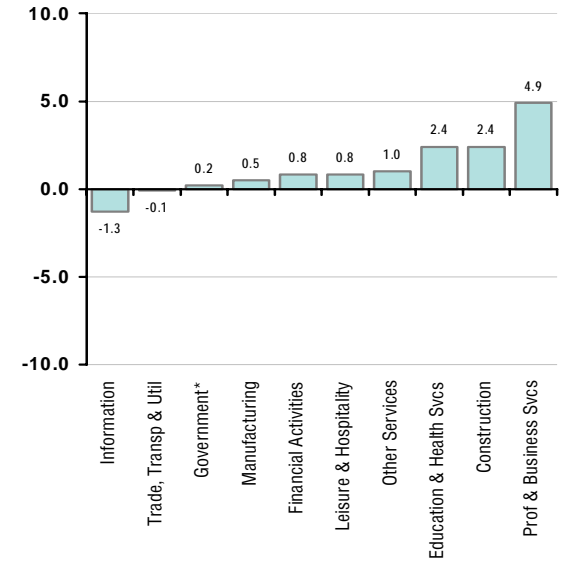
Hours & Earnings: All Employees/Mfg. Workers

	Mar 2011		Mar 2010		Feb 2011
	#	%	#	%	
Private Industry All Employees					
Weekly Earnings	\$1,023.41	\$959.71	\$63.70	6.6%	\$1,003.68
Weekly Hours	41.3	41.6	-0.3	-0.7%	41.0
Hourly Earnings	\$24.78	\$23.07	\$1.71	7.4%	\$24.48
Manufacturing Workers					
Weekly Earnings	\$945.17	\$928.12	\$17.05	1.8%	\$952.56
Weekly Hours	33.6	33.1	0.5	1.5%	33.6
Hourly Earnings	\$28.13	\$28.04	\$0.09	0.3%	\$28.35

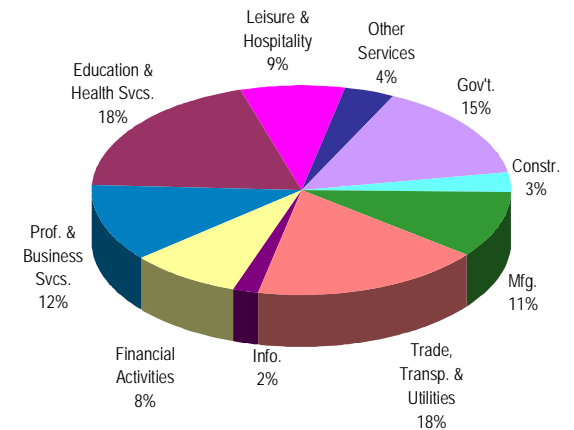
Minimum Wage

	eff. Jan. 1st		eff. July 24
	CT	CT Waiters	U.S.
2007	\$7.65	\$5.41	\$5.85
2008	--	--	\$6.55
2009	\$8.00	\$5.52	\$7.25
2010	\$8.25	\$5.69	

Net Job Change March 2010 - March 2011 (in 000s)



Statewide Employment Distribution March 2011



Connecticut's Current Recessionary Job Loss March 2008 - March 2011 (in 000s)

Nonfarm Emp.		Job Change	
Mar 08	Mar 2011	No.	%
1,711.5	1,617.8	-93.7	-5.5%