



# LABOR SITUATION

Office of Research  
Scott D. Jackson, Commissioner

FOR IMMEDIATE RELEASE

January 2018 Data  
CT Unemployment Rate = 4.5%  
US Unemployment Rate = 4.1%

## Nonfarm jobs grow by 3,400 in January; unemployment rate unchanged at 4.5%

WETHERSFIELD, March 9, 2018 – Preliminary Connecticut nonfarm job estimates from the business payroll survey administered by the US Bureau of Labor Statistics (BLS) show the state gained 3,400 net jobs (0.2%) in January 2018, to a level of 1,689,000, seasonally adjusted. Over the year, nonagricultural employment in the state grew by 5,500 jobs (0.5%). December's 2017 originally-released job gain of 6,000 was revised down 300 by the BLS to a gain of 5,700 for the month. Note that this revision includes the 2017 annual benchmark. The number of the state's unemployed residents was estimated at 86,800, seasonally adjusted, up 400 from December. As a result, Connecticut's unemployment rate remained unchanged at 4.5% in January, seasonally adjusted. Resident employment estimates include the self-employed and residents working out of state and are determined separately from the nonfarm payroll job estimates above.

"With the January 2018 job estimates we also have our first look at the annual 2017 benchmark revision," said Andy Condon, Director of the Office of Research. "Benchmarked data indicate that Connecticut grew by only 1,800 jobs on a not seasonally-adjusted average annual basis. However, the private sector grew by 5,300 jobs on the same average annual basis. Noteworthy is the manufacturing sector grew by 2,900 jobs, the first increase in employment since 2011 and before that in 1998. In addition, as a result of the benchmark revision and January's job growth, the private sector has recovered 100% of the jobs lost in the recession of 2008-2010."

### Nonfarm Jobs Detail (business establishment survey)

**Private sector employment** grew by 3,700 (0.3%) to 1,458,200 jobs over the month in January, and by 9,300 (0.6%) seasonally adjusted jobs over the year. The **government supersector** lost 300 positions in January to a total of 230,800, and over-the-year losses were at -3,800 or -1.6%. The **government supersector** includes all federal, state and local employment, including public higher education and Native American casino employment located on tribal land.

Five of the ten major industry *supersectors* gained employment in January, while four declined and the **Information supersector** was unchanged. **Trade, transportation & utilities** led growing industries with 1,600 net new jobs (0.5%, 301,200 total jobs). **Professional & business services** was next with an increase of 1,500 jobs (0.7%, 220,800 total). **Other services** gained 800 (1.2%, 65,600). **Education & health services** added 400 jobs (0.1%, 336,600 total) and **financial activities** contributed 200 net new jobs (0.2%, 128,000).

The **manufacturing supersector** dropped 500 jobs in January (-0.3%, 163,300), though the supersector finished up in 2017 for the first time in many years. The **construction** (-0.5%, 57,000) and **government** (-0.1%, 230,800) *supersectors* lost 300 jobs each in January. Finally, **leisure & hospitality** was off slightly, dropping 100 jobs (-0.1%, 154,500).

Connecticut has now recovered **79.6%** (94,800 jobs) of the 119,100 seasonally adjusted jobs lost in the "Great Recession" (3/08-2/10). The job recovery is into its 95th month and the state needs an additional 24,300 jobs to reach an overall nonfarm employment expansion. The state's **private sector** has now recovered **100%** (111,700) of the private sector jobs lost in that same employment downturn.

**Connecticut Labor Market Areas (LMAs):** Three of the six LMAs that are seasonally-adjusted by the BLS saw job increases in January 2017 and one saw a decline. The **Bridgeport – Stamford – Norwalk** and **Waterbury LMA's** were unchanged. The **Hartford LMA** led growth in the state with 2,500 net new jobs (0.4%, 579,000 total). **New Haven** was next with an increase of 1,000 jobs (0.4%, 283,600 total) and the **Danbury LMA** saw a smaller gain of 200 jobs (0.3%, 78,500 total). The **Norwich – New London – Westerly RI LMA** saw a small loss of 100 jobs in (-0.1%, 130,600 total).

*Note: The six major Connecticut LMAs are estimated independently from the statewide data by the BLS and cover more than 90% of the nonfarm employment in the state. Thus, estimates will not fully sum to the statewide total.*

**Hours and Earnings:** The **private sector** workweek, not seasonally adjusted, averaged 33.6 hours in January 2018, down one-tenth of an hour from the same month a year ago. Average hourly earnings at \$31.55, not seasonally adjusted, were up \$0.19 (0.6%) from the January 2017 estimate (\$31.36). The resultant average **private sector** weekly pay amounted to \$1,060.80, up \$3.25 from a year ago (0.3%). The 12-month percentage change in the Consumer Price Index for All Urban Consumers (CPI-U, U.S. City Average, not seasonally adjusted) in January 2018 was 2.1%. Information for the manufacturing production workweek and earnings can be found in the table section of this release under the “Hours and Earnings” data category. *Current all-employee private sector hours and earnings estimates can be volatile due to fluctuating sample responses.*

### Labor Force Data (residential household survey)

The January 2018 unemployment rate for Connecticut is estimated at **4.5%** (seasonally adjusted), unchanged from December 2017 and down four-tenths of a percentage point from a year ago when it was 4.9%. The US jobless rate in January 2018 was 4.1%, unchanged from December 2017.

Based on the Local Area Unemployment Statistics model (LAUS - a statistical model using the CPS – Current Population Survey residential data), the number of Connecticut unemployed residents, seasonally adjusted, was up 400 from December at 86,800 in January. Over the year, the number of the state’s jobless residents declined by 7,100 (-7.6%). The state’s labor force decreased by 2,700 (-0.1%) over the month, and is down over the year (-13,100, -0.7%).

January 2018 seasonally-adjusted average weekly initial unemployment claims for first-time filers in Connecticut fell by 4 claimants (-0.1%) to 3,409 from December 2017, and were lower by 354 claims (-9.5%) from the January 2017 level of 3,763.

*The nonfarm employment estimate, derived from a survey of businesses, is a measure of jobs in the state; the unemployment rate and labor force estimates are based on a household survey, and measure the work status of people who live in Connecticut. Overall, as the national and state economies recover, volatility in monthly numbers can be expected. **Job and employment estimates are best understood in the context of their movement over several months rather than observed changes in a single month’s value.***

*Next Connecticut Labor Situation release: Thursday, March 22, 2018 (February 2018 data on the new benchmark)*

Contact: Communications Office

(860) 263-6535

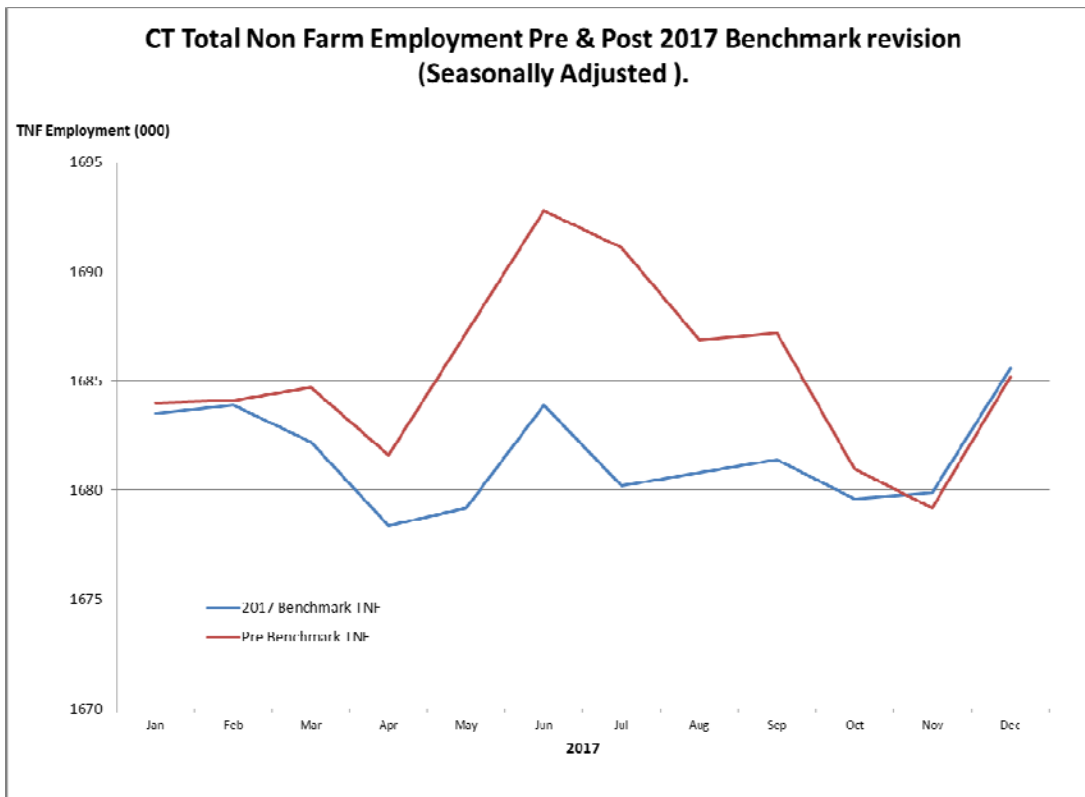
03-09-18

Labor market information is available on the Internet at [www.ctdol.state.ct.us/lmi](http://www.ctdol.state.ct.us/lmi)  
200 Folly Brook Boulevard, Wethersfield, CT 06109-1114 - [www.ct.gov/dol](http://www.ct.gov/dol)  
*An Equal Opportunity/Affirmative Action Employer*

## **2017 Annual CES (payroll jobs) Benchmark and LAUS (unemployment statistics) Annual Reprocessing**

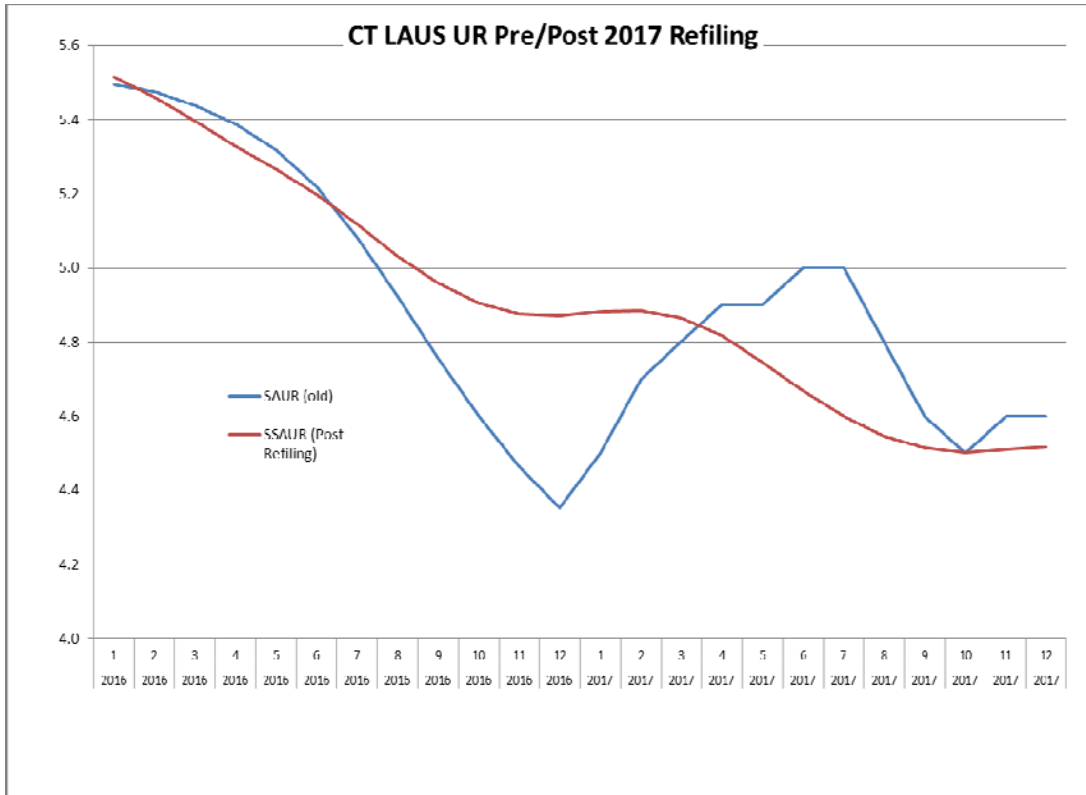
### **Current Employment Statistics (CES)**

Annually, the BLS goes through a revision process with the states' CES payroll survey where sample based survey data is replaced with Quarterly Census of Employment and Wages data (QCEW). The process involves replacing CES data starting with October of 2016 and ending with September of 2017. The last three months of the year are then re-estimated using CES sample data. The chart below shows total nonfarm employment estimates (TNF) before and after the benchmark revision. For most of the year CES was somewhat overestimating TNF employment, but the series converged by the end of the year. The original series estimated average annual year-over-year growth to be 5,300. After the benchmark, that figure was reduced to 2,300.



### Local Area Unemployment Statistics (LAUS)

The residential labor force and unemployment statistics series also undergoes an annual revision. The data are revised for any additional sample collected in the Current Population survey and the entire series is smoothed to reduce statistical noise.



# NONFARM EMPLOYMENT

## Jobs - by Place of Work

### CONNECTICUT AND THE UNITED STATES - Seasonally Adjusted

	January 2018 P	December 2017 R	November 2017	October 2017	January 2017	Over Month Change	Over Month Rate	Over Year Change	Over Year Rate
<b>CONNECTICUT</b>	<b>1,689,000</b>	<b>1,685,600</b>	<b>1,679,900</b>	<b>1,679,600</b>	<b>1,683,500</b>	<b>3,400</b>	<b>0.2%</b>	<b>5,500</b>	<b>0.3%</b>
<b>Total Private</b>	<b>1,458,200</b>	<b>1,454,500</b>	<b>1,448,700</b>	<b>1,448,400</b>	<b>1,448,900</b>	<b>3,700</b>	<b>0.3%</b>	<b>9,300</b>	<b>0.6%</b>
<b>Goods Producing Industries</b>									
Mining	600	500	600	600	600	100	20.0%	0	0.0%
Construction	57,000	57,300	58,000	59,000	58,400	-300	-0.5%	-1,400	-2.4%
Manufacturing	163,300	163,800	161,900	160,400	157,600	-500	-0.3%	5,700	3.6%
Durable Goods	128,200	128,500	126,900	125,500	123,400	-300	-0.2%	4,800	3.9%
Nondurable Goods	35,100	35,300	35,000	34,900	34,200	-200	-0.6%	900	2.6%
<b>Service Providing Industries</b>									
Trade, Transportation & Utilities	301,200	299,600	297,600	297,400	298,900	1,600	0.5%	2,300	0.8%
Wholesale	63,500	63,800	63,100	62,300	62,800	-300	-0.5%	700	1.1%
Retail	183,400	181,600	180,900	181,400	185,000	1,800	1.0%	-1,600	-0.9%
Transp, Warehousing & Utilities	54,300	54,200	53,600	53,700	51,100	100	0.2%	3,200	6.3%
Information	30,700	30,700	31,100	31,100	31,900	0	0.0%	-1,200	-3.8%
Financial Activities	128,000	127,800	128,000	127,600	128,500	200	0.2%	-500	-0.4%
Finance & Insurance	108,000	107,800	107,900	107,600	108,600	200	0.2%	-600	-0.6%
Real Estate, Rental & Leasing	20,000	20,000	20,100	20,000	19,900	0	0.0%	100	0.5%
Professional & Business Services	220,800	219,300	216,900	217,700	218,400	1,500	0.7%	2,400	1.1%
Prof, Scientific & Tech Services	97,700	96,400	96,200	96,500	96,500	1,300	1.3%	1,200	1.2%
Management of Companies	32,300	31,800	31,900	32,100	32,500	500	1.6%	-200	-0.6%
Admn & Support & Waste Mgt Serv	90,800	91,100	88,800	89,100	89,400	-300	-0.3%	1,400	1.6%
Educational & Health Services	336,500	336,100	335,800	335,400	333,200	400	0.1%	3,300	1.0%
Educational Services	65,000	65,200	65,500	65,700	64,200	-200	-0.3%	800	1.2%
Health Care & Social Assistance	271,500	270,900	270,300	269,700	269,000	600	0.2%	2,500	0.9%
Leisure and Hospitality	154,500	154,600	153,500	154,900	156,400	-100	-0.1%	-1,900	-1.2%
Arts, Entertainment & Recreation	26,900	27,200	26,500	27,500	28,600	-300	-1.1%	-1,700	-5.9%
Accommodation & Food Services	127,600	127,400	127,000	127,400	127,800	200	0.2%	-200	-0.2%
Other Services	65,600	64,800	65,300	64,300	65,000	800	1.2%	600	0.9%
Government**	230,800	231,100	231,200	231,200	234,600	-300	-0.1%	-3,800	-1.6%
<b>UNITED STATES</b>	<b>147,810,000</b>	<b>147,610,000</b>	<b>147,450,000</b>	<b>147,234,000</b>	<b>145,696,000</b>	<b>200,000</b>	<b>0.1%</b>	<b>2,114,000</b>	<b>1.5%</b>

### LABOR MARKET AREAS (LMA)

Labor Market Area employment estimates are made independently of Statewide estimates.

Seasonally Adjusted data	January 2018 P	December 2017 R	November 2017	October 2017	January 2017	Over Month Change	Over Month Rate	Over Year Change	Over Year Rate
<b>Bridgeport-Stamford-Norwalk</b>	405,600	405,600	405,200	404,700	408,500	0	0.0%	-2,900	-0.7%
<b>Danbury</b>	78,500	78,300	78,300	78,000	78,300	200	0.3%	200	0.3%
<b>Hartford</b>	579,000	576,500	575,200	574,800	572,600	2,500	0.4%	6,400	1.1%
<b>New Haven</b>	283,600	282,600	282,500	282,600	283,600	1,000	0.4%	0	0.0%
<b>Norwich-New London-Westerly, RI</b>	130,600	130,700	130,700	130,900	129,900	-100	-0.1%	700	0.5%
<b>Waterbury</b>	66,900	66,900	67,100	67,000	66,800	0	0.0%	100	0.1%
<i>Not Seasonally Adjusted data (Non-Classified Areas, State estimated not BLS)</i>									
<b>Enfield</b>	44,800	45,200	45,200	44,900	44,900	-400	-0.9%	-100	-0.2%
<b>Torrington-Northwest</b>	31,400	32,300	32,500	32,600	31,800	-900	-2.8%	-400	-1.3%
<b>Danielson-Northeast</b>	26,700	27,000	27,100	27,200	26,700	-300	-1.1%	0	0.0%

\* Less than 0.05% \*\* Includes Native American tribal government employment

P = Preliminary

R = Revised

Starting with March, 2011, our monthly statewide and major LMA nonfarm job estimates have been taken over by the US Department of Labor Bureau of Labor Statistics. This is the final phase of transition in this program, which began in 2008. As a result of changes in the estimation procedures, you are likely to see more variability in month-to-month estimates of job counts. Caution should be used in interpreting any single month's estimate. The data are best interpreted to identify trends and cycles over several months and quarters. If you have any questions about these changes, please email us at: [dol.lmi@ct.gov](mailto:dol.lmi@ct.gov). Danbury and Waterbury LMA's are now back to being seasonally adjusted.

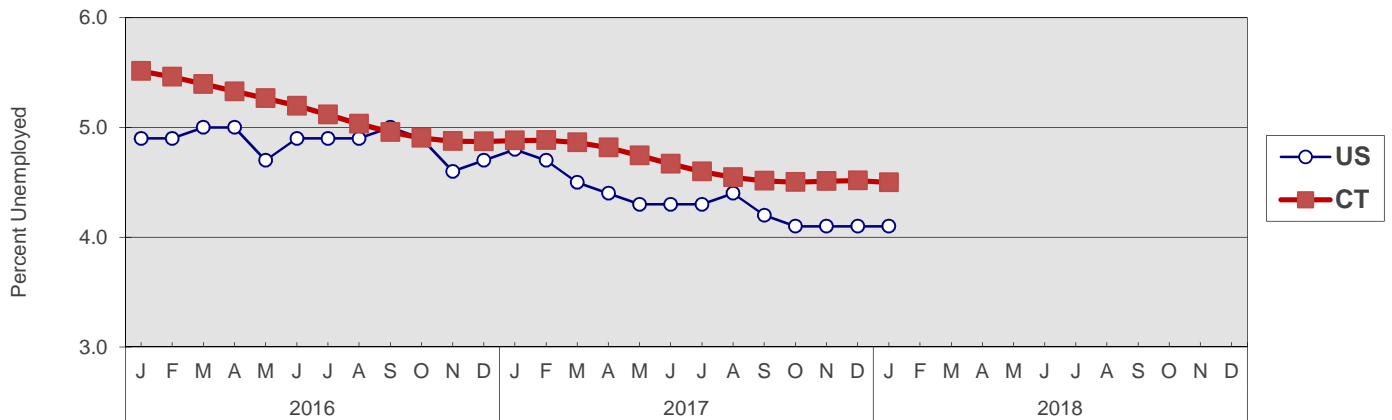
# UNEMPLOYMENT

## Persons Unemployed - by Place of Residence

### CONNECTICUT AND THE UNITED STATES - Seasonally Adjusted

	January 2018 P		January 2017 R		Change		December 2017 R	
	Number	Rate	Number	Rate	Number	Points	Number	Rate
<b>CONNECTICUT</b>								
Unemployed	86,800	4.5	93,900	4.9	-7,100	-0.4	86,400	4.5
Labor Force	1,909,900		1,923,000		-13,100		1,912,600	
<b>UNITED STATES</b>								
Unemployed	6,684,000	4.1	7,642,000	4.8	-958,000	-0.7	6,576,000	4.1
Labor Force	161,115,000		159,718,000		1,397,000		160,597,000	

### U.S. AND CONNECTICUT UNEMPLOYMENT RATES - Seasonally Adjusted 2016 - 2018



### LABOR MARKET AREAS - Not Seasonally Adjusted

	January 2018 P		January 2017 R		Change		December 2017 R	
	Number	Rate	Number	Rate	Number	Points	Number	Rate
Bridgeport-Stamford	23,700	5.2	25,600	5.5	-1,900	-0.3	18,200	3.9
Danbury	4,800	4.5	5,200	4.8	-400	-0.3	3,400	3.1
Danielson-Northeast*	2,500	5.7	2,500	5.8	0	-0.1	1,800	4.1
Worcester NECTA	2,400	5.7	2,400	5.8	0	-0.1	1,700	4.2
Hampton	100	5.0	100	6.0	0	-1.0	100	3.5
Enfield	2,600	5.2	2,800	5.6	-200	-0.4	2,000	3.9
Hartford	32,900	5.3	34,200	5.5	-1,300	-0.2	24,900	4.0
New Haven	16,700	5.2	17,700	5.4	-1,000	-0.2	12,700	3.9
Norwich-New London	7,600	5.3	8,100	5.6	-500	-0.3	5,700	4.0
Torrington-Northwest**	2,600	5.6	2,800	5.8	-200	-0.2	1,800	3.9
Torrington NECTA	1,700	6.5	1,800	6.6	-100	-0.1	1,200	4.6
Litchfield	900	4.6	1,000	4.7	-100	-0.1	600	3.0
Waterbury	7,400	6.7	7,700	6.8	-300	-0.1	5,600	5.1
<b>CONNECTICUT</b>	<b>99,800</b>	<b>5.3</b>	<b>105,600</b>	<b>5.5</b>	<b>-5,800</b>	<b>-0.2</b>	<b>75,200</b>	<b>4.0</b>
<b>UNITED STATES</b>	<b>7,189,000</b>	<b>4.5</b>	<b>8,149,000</b>	<b>5.1</b>	<b>-960,000</b>	<b>-0.6</b>	<b>6,278,000</b>	<b>3.9</b>

P = Preliminary

R = Revised

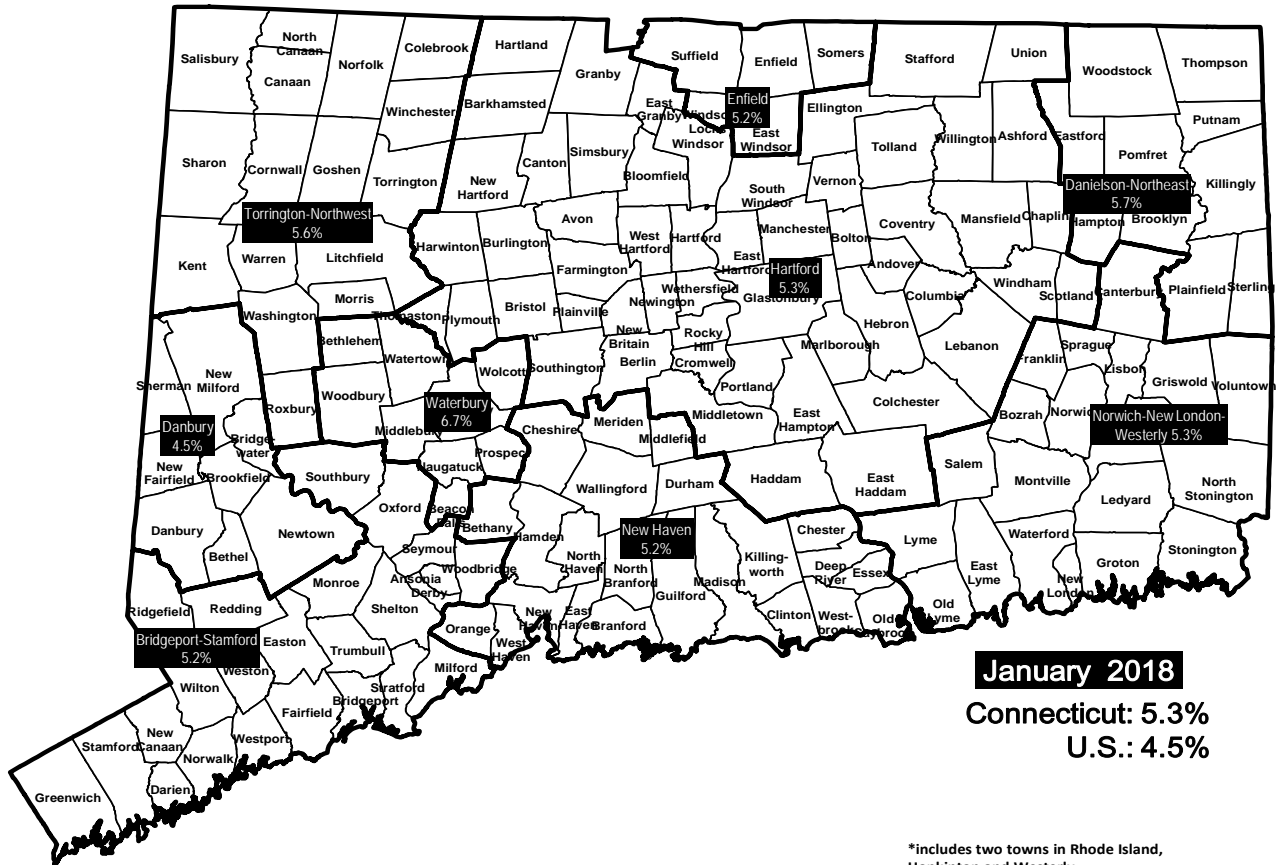
Labor force data included in this publication are developed in cooperation with the U.S. Department of Labor, Bureau of Labor Statistics.

\* Worcester NECTA, CT part and Hampton LMA are combined \*\* Torrington Metropolitan NECTA and Litchfield LMA are combined

# UNEMPLOYMENT RATES

Not Seasonally Adjusted

## LABOR MARKET AREAS



# HOURS AND EARNINGS

## CONNECTICUT Statewide - Not Seasonally Adjusted

	Average Weekly Earnings				Average Weekly Hours				Average Hourly Earnings			
	Jan. 2018 P	Jan. 2017	Change over Yr.	Dec. 2017 R	Jan. 2018 P	Jan. 2017	Change over Yr.	Dec. 2017 R	Jan. 2018 P	Jan. 2017	Change over Yr.	Dec. 2017 R
<b>Private Industry All Employees</b>	\$1,060.08	\$1,056.83	\$3.25	\$1,060.12	33.6	33.7	-0.1	34.0	\$31.55	\$31.36	\$0.19	\$31.18
<b>Manufacturing*</b>												
<b>Production Workers</b>	\$1,058.08	\$1,049.13	\$8.95	\$1,082.39	40.9	42.1	-1.2	42.1	\$25.87	\$24.92	\$0.95	\$25.71

\* Production worker data have been impacted by the loss of a large, high-paying manufacturer from the monthly sample.

P = Preliminary R = Revised

Hours and earnings are also developed for the state's major industry sectors and Labor Market Areas. They can be found on our website at: [www.ctdol.state.ct.us/lmi](http://www.ctdol.state.ct.us/lmi).

# TRENDS

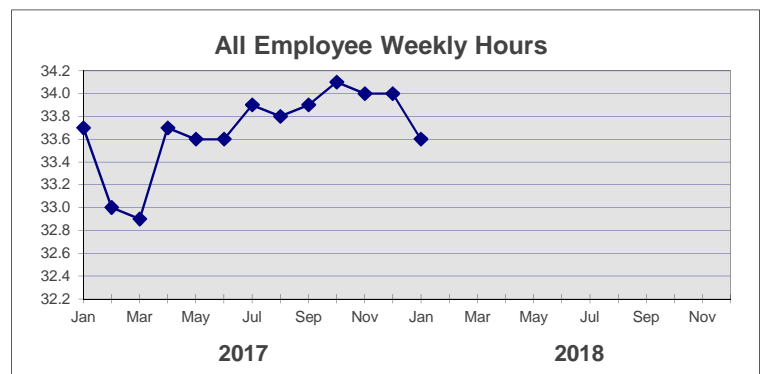
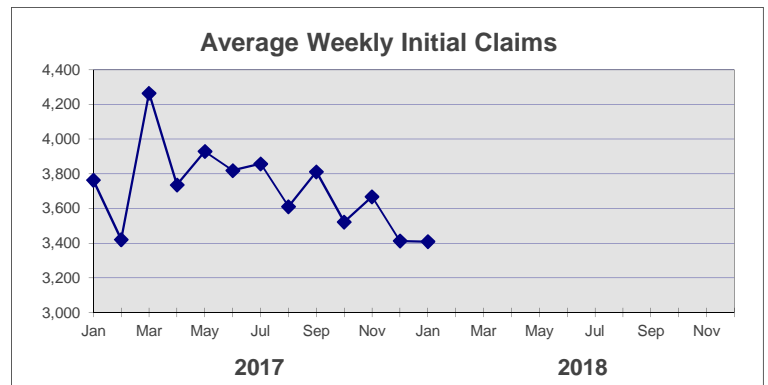
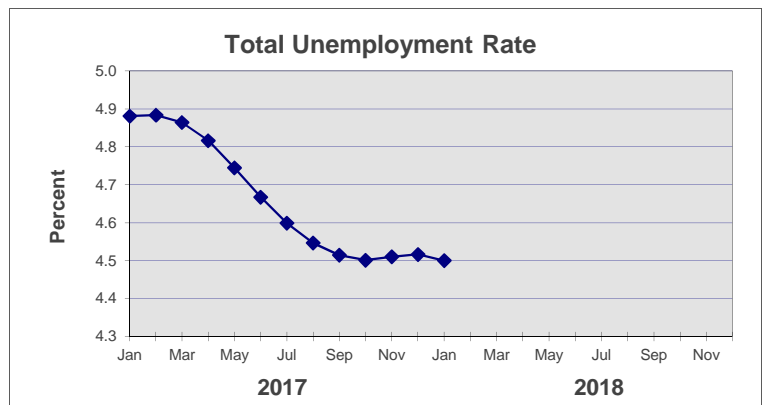
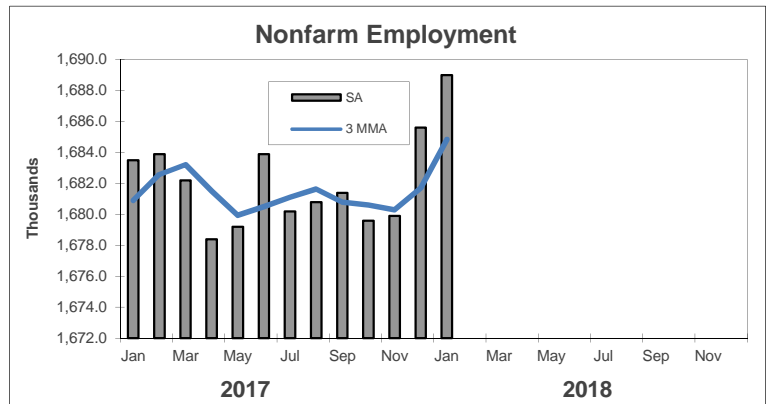
## Seasonally Adjusted

	Nonfarm Employment (000s)	Total Unemployment Rate
<b>2017</b>		
Jan	1,683.5	4.9
Feb	1,683.9	4.9
Mar	1,682.2	4.9
Apr	1,678.4	4.8
May	1,679.2	4.7
Jun	1,683.9	4.7
Jul	1,680.2	4.6
Aug	1,680.8	4.5
Sep	1,681.4	4.5
Oct	1,679.6	4.5
Nov	1,679.9	4.5
Dec	1,685.6 R	4.5 R

<b>2018</b>		
Jan	1,689.0 P	4.5 P
Feb		
Mar		
Apr		
May		
Jun		
Jul		
Aug		
Sep		
Oct		
Nov		
Dec		

	Avg Weekly Initial Claims	All Employee Weekly Hours*
<b>2017</b>		
Jan	3,763	33.7
Feb	3,421	33.0
Mar	4,266	32.9
Apr	3,736	33.7
May	3,929	33.6
Jun	3,820	33.6
Jul	3,858	33.9
Aug	3,611	33.8
Sep	3,812	33.9
Oct	3,523	34.1
Nov	3,668	34.0
Dec	3,413	34.0 R

<b>2018</b>		
Jan	3,409	33.6 P
Feb		
Mar		
Apr		
May		
Jun		
Jul		
Aug		
Sep		
Oct		
Nov		
Dec		



\* Not seasonally adjusted

P = Preliminary

R = Revised

\*\* Labor-management dispute