



LABOR SITUATION

Office of Research
Sharon M. Palmer, Commissioner

FOR IMMEDIATE RELEASE

August 2015 Data
CT Unemployment Rate = 5.3%
US Unemployment Rate = 5.1%

Jobs increase by 3,200 in August, as unemployment rate declines to 5.3%

WETHERSFIELD, September 17, 2015 – Connecticut preliminary nonfarm August employment figures from the U.S. Bureau of Labor Statistics (BLS) business survey indicate the state added 3,200 jobs (0.19%) last month to a level of 1,698,900, seasonally adjusted. This is the fourth monthly state nonfarm jobs increase in a row. The state is now estimated to have added 33,200 nonfarm positions (1.99%, 2,767 jobs per month) over the year. July's originally estimated nonfarm job gain of 4,100 (0.24%) was revised slightly lower to 3,800 (0.22%).

Connecticut's August 2015 unemployment rate was calculated at 5.3%, seasonally adjusted. This is down one-tenth of a percentage point from the revised July 2015 unemployment rate of 5.4% and down one and a tenth of a percentage point from the August 2014 unemployment rate of 6.4%. Connecticut's unemployment rate has not been this low since May 2008 (5.4%).

"Connecticut's estimated nonfarm employment growth pace and unemployment rates have come closer in line with national averages this summer," said Andy Condon, Director of the Office of Research. "In August, earlier school openings and the later Labor Day holiday seemed to influence industry employment, earnings, and hours worked."

Nonfarm Jobs Detail (business establishment survey)

Preliminary August nonfarm job estimates show the state added 3,200 positions (0.19%), seasonally adjusted, as five industry *supersectors* gained jobs, while four declined and the **information** *supersector* was unchanged. Since August 2014, Connecticut nonfarm job growth is calculated at 33,200 (1.99%) with nine of the ten major industry *supersectors* showing increased employment. In the first eight months of 2015, nonagricultural jobs have increased 20,800, compared to 12,700 for the first eight months of 2014.

Connecticut's **private sector** increased 1,900 jobs (0.13%) in August and has now added 31,100 positions (2.18%, about 2,592 jobs per month) over the year to a level of 1,458,600, seasonally adjusted. The state's private sector makes up about 86% of Connecticut's nonfarm employment base. The **government** *supersector* also increased employment in August (1,300, 0.54%) and has only recently been supporting job growth over the year (2,100, 0.88%).

The **education and health services** (2,500, 0.8%) *supersector* was the lead job gainer in August. The **education services** (1,300, 2.1%) and **health services** (1,200, 0.4%) components both posted favorable gains last month. Schools seemed to have geared up early this year making the seasonally adjusted education numbers look stronger. The **government** (1,300, 0.5%) *supersector* added jobs last month, primarily in **local government** entities (1,200, 0.8%). Again, the early start to the school year likely affected local government as well. The **trade, transportation & utilities** (1,000, 0.3%) *supersector* was the third biggest job gainer. **Transportation and utilities** (700, 1.3%, contract school busing tallied here) provided the largest subcomponent gain in this *supersector*, while **retail** (200, 0.1%) and **wholesale** (100, 0.2%) were also positive. Other gains in August came from the **manufacturing** (500, 0.3%) and **other services** (200, 0.3%) *supersectors*.

The **leisure and hospitality** (-1,000, -0.6%) *supersector* was the largest of the four declining industry *supersectors* in August. The **leisure and hospitality** decline last month may have been the flipside to the early school openings industry gains as summer jobs may have ended a little earlier than usual. The **financial activities** (-700, -0.5%) *supersector* experienced the first monthly loss in five months. **Finance and insurance** (-600, -0.5%) and **real estate** (-100, -0.5%) segments both saw declines in August. The combined **construction and closely related mining** (-500, -0.8%) *supersector* also lost positions for the second month in a row. A minor job loss also came from the **professional and business services** (-100, -0.05%) *supersector*. The small **information** *supersector*

was unchanged at 31,700 in August but is the only major industry *supersector* of the state's ten major industry *supersectors* to have lost jobs over-the-year (-300, -0.9%).

Recession recovery: Connecticut has now recovered 104,900 positions, or 88.2% of the 119,000 seasonally adjusted total nonfarm jobs that were lost in the state during the March 2008 - February 2010 employment recession. Connecticut's jobs recovery is now 66 months old and is averaging about 1,589 jobs per month since February 2010. There have been 46 monthly job gains (69.7%), 19 monthly job losses, and one unchanged month (November 2010) in the continuing recovery period. The **private sector** has recovered employment at a faster pace (approximately 1,664 per month) and has now regained 109,800 (98.4%) of the 111,600 private sector jobs that were lost during the same employment downturn. The state needs to reach the 1,713,000 job level to enter a full nonfarm employment expansionary phase. This will require an additional 14,100 nonfarm jobs. A total of just 1,800 more private sector positions are needed to have a fully recovered private sector.

Labor Market Areas (LMAs): The August 2015 preliminary nonfarm job statistics show that two of the four major Connecticut Labor Market Areas that are *seasonally adjusted* by the BLS provided job gains while two declined. The **New Haven LMA** (1,600, 0.6%, 282,800) and the **Bridgeport-Stamford-Norwalk LMA** (100, 0.02%, 413,600) displayed job gains. The **Hartford-West Hartford-East Hartford LMA** (-3,500, -0.6%, 575,300) and the **Norwich-New London-Westerly LMA** (-300, -0.2%, 127,000) posted seasonally adjusted job losses. The **Hartford-West Hartford-East Hartford LMA** (10,700, 1.9%), which is the largest employing LMA in the state, still leads all major regions in annual job growth magnitude and percentage gain. *Note: The six major Connecticut LMAs are estimated independently (only the largest four LMAs are officially seasonally adjusted) from the statewide numbers by the BLS and cover over 90% of the nonfarm employment in the state. These estimates will not fully sum to the statewide total.*

Hours and Earnings: The **private sector** workweek, not seasonally adjusted, averaged 33.9 hours in August 2015, up one-tenth of an hour from the same month a year ago (33.8, 0.3%). Average hourly earnings at \$29.24, not seasonally adjusted, were up \$1.26, or 4.5%, from the August 2014 estimate. The resultant average **private sector** weekly pay was figured at \$991.24, up \$45.52, or 4.8% higher than a year ago. The 12-month percent change in the Consumer Price Index for All Urban Consumers (CPI-U, U.S. City Average, not seasonally adjusted) in August 2015 was just 0.2%. Information for the manufacturing production workweek and earnings can be found in the table section of this release under the "Hours and Earnings" data category. *Current all-employee private sector hours and earnings estimates can be volatile due to fluctuating sample responses.*

Labor Force Data (residential household survey)

The unemployment rate in August 2015 was estimated at **5.3%** for Connecticut, seasonally adjusted. This is in comparison to the U.S. unemployment rate of 5.1%. Connecticut's rate is down one-tenth of a percentage point from the revised July 2015 unemployment rate of 5.4% and down one and one-tenth of a percentage point from the August 2014 unemployment rate of 6.4%. Connecticut's unemployment rate has not been this low since May 2008 (5.4%) when unemployment was increasing at the start of the Great Recession. It should be mentioned that last month's drop in the unemployment rate occurred on a declining labor force (-7,678, -0.4% OTM) as has been true for the last three months. However, the state's labor force did just reach an all-time high in May at 1,921,726.* Connecticut's labor force is still higher by 16,382 (0.9%) participants over the year.

Unemployment: Based on the Local Area Unemployment Statistics model (LAUS - a statistical model utilizing CPS residential survey data), the number of Connecticut unemployed, seasonally adjusted, declined by 3,562 (-3.4%) over the month to 100,163 in August 2015. The number of unemployed state residents has fallen by 19,882 (-16.6%) since August 2014, which is considered statistically significant.

The August 2015 seasonally adjusted average weekly initial unemployment claims for first-time Connecticut filers increased by 281 claimants (7.4%) to 4,080, but were down by 103 claims (-2.5%) from the August 2014 level of 4,183.

*The nonfarm employment estimate, derived from a survey of businesses, is a measure of jobs in the state; the unemployment rate and labor force estimates, are based on a household survey, and measure the work status of people who live in Connecticut. Overall, as the national and state economies recover, volatility in monthly numbers can be expected. **Job and employment estimates are best understood in the context of their movement over several months rather than observed changes in a single month's value.***

** Consistent labor force estimates are available since 1976, and the May 2015 labor force was the largest recorded for the State of Connecticut in that time. Other data suggest that the labor force prior to 1976 was even smaller, so the May 2015 level was likely an all-time high.*

Next Connecticut Labor Situation release: Monday, October 19, 2015 (September 2015 data)

Contact: Communications Office

(860) 263-6535

9-17-15

Labor market information is available on the Internet at www.ctdol.state.ct.us/lmi
200 Folly Brook Boulevard, Wethersfield, CT 06109-1114 - www.ct.gov/dol
An Equal Opportunity/Affirmative Action Employer

NONFARM EMPLOYMENT

Jobs - by Place of Work

CONNECTICUT AND THE UNITED STATES - Seasonally Adjusted

	August 2015 P	July 2015 R	June 2015	May 2015	August 2014	Over Month Change	Over Month Rate	Over Year Change	Over Year Rate
CONNECTICUT	1,698,900	1,695,700	1,691,900	1,691,300	1,665,700	3,200	0.2%	33,200	2.0%
Total Private	1,458,600	1,456,700	1,454,000	1,451,400	1,427,500	1,900	0.1%	31,100	2.2%
Goods Producing Industries									
Mining	500	500	600	500	600	0	0.0%	-100	-16.7%
Construction	58,100	58,600	60,500	58,300	56,400	-500	-0.9%	1,700	3.0%
Manufacturing	161,700	161,200	160,600	159,800	159,200	500	0.3%	2,500	1.6%
Durable Goods	125,800	125,600	125,000	124,500	123,800	200	0.2%	2,000	1.6%
Nondurable Goods	35,900	35,600	35,600	35,300	35,400	300	0.8%	500	1.4%
Service Providing Industries									
Trade, Transportation & Utilities	307,600	306,600	306,900	306,900	300,500	1,000	0.3%	7,100	2.4%
Wholesale	63,000	62,900	62,500	63,300	63,000	100	0.2%	0	0.0%
Retail	190,800	190,600	190,700	189,500	184,800	200	0.1%	6,000	3.2%
Transp, Warehousing & Utilities	53,800	53,100	53,700	54,100	52,700	700	1.3%	1,100	2.1%
Information	31,700	31,700	32,000	31,900	32,000	0	0.0%	-300	-0.9%
Financial Activities	130,400	131,100	130,200	129,500	128,600	-700	-0.5%	1,800	1.4%
Finance & Insurance	110,500	111,100	110,400	109,900	109,200	-600	-0.5%	1,300	1.2%
Real Estate, Rental & Leasing	19,900	20,000	19,800	19,600	19,400	-100	-0.5%	500	2.6%
Professional & Business Services	217,000	217,100	214,400	214,500	211,800	-100	0.0%	5,200	2.5%
Prof, Scientific & Tech Services	95,800	95,900	96,000	94,800	95,700	-100	-0.1%	100	0.1%
Management of Companies	29,800	29,800	30,100	30,300	30,500	0	0.0%	-700	-2.3%
Admn & Support & Waste Mgt Serv	91,400	91,400	88,300	89,400	85,600	0	0.0%	5,800	6.8%
Educational & Health Services	332,900	330,400	329,000	330,100	325,900	2,500	0.8%	7,000	2.1%
Educational Services	64,700	63,400	62,800	62,900	63,500	1,300	2.1%	1,200	1.9%
Health Care & Social Assistance	268,200	267,000	266,200	267,200	262,400	1,200	0.4%	5,800	2.2%
Leisure and Hospitality	154,800	155,800	156,100	156,100	149,500	-1,000	-0.6%	5,300	3.5%
Arts, Entertainment & Recreation	26,600	27,700	29,000	29,500	26,000	-1,100	-4.0%	600	2.3%
Accommodation & Food Services	128,200	128,100	127,100	126,600	123,500	100	0.1%	4,700	3.8%
Other Services	63,900	63,700	63,700	63,800	63,000	200	0.3%	900	1.4%
Government**	240,300	239,000	237,900	239,900	238,200	1,300	0.5%	2,100	0.9%
UNITED STATES	142,288,000	142,115,000	141,870,000	141,625,000	139,369,000	173,000	0.1%	2,919,000	2.1%

LABOR MARKET AREAS (LMA)

Labor Market Area employment estimates are made independently of Statewide estimates.

Seasonally Adjusted data	August 2015 P	July 2015 R	June 2015	May 2015	August 2014	Over Month Change	Over Month Rate	Over Year Change	Over Year Rate
Bridgeport-Stamford-Norwalk	413,600	413,500	411,200	409,300	406,200	100	0.0%	7,400	1.8%
Hartford	575,300	578,800	574,900	576,200	564,600	-3,500	-0.6%	10,700	1.9%
New Haven	282,800	281,200	281,600	281,600	279,100	1,600	0.6%	3,700	1.3%
Norwich-New London-Westerly	127,000	127,300	127,300	127,800	128,300	-300	-0.2%	-1,300	-1.0%
Danbury - Not Seasonally Adjusted	77,600	78,100	79,600	79,600	77,700	-500	-0.6%	-100	-0.1%
Waterbury - Not Seasonally Adjusted	67,900	68,500	69,200	68,900	66,300	-600	-0.9%	1,600	2.4%
<i>Not Seasonally Adjusted data (Non-Classified Areas, State estimated not BLS)</i>									
Enfield	45,700	45,600	46,100	45,600	45,000	100	0.2%	700	1.6%
Torrington-Northwest	34,600	35,000	34,700	34,500	34,400	-400	-1.1%	200	0.6%
Danielson-Northeast	27,400	27,100	27,700	27,700	27,600	300	1.1%	-200	-0.7%

* Less than 0.05% ** Includes Native American tribal government employment

P = Preliminary

R = Revised

Starting with March, 2011, our monthly statewide and major LMA nonfarm job estimates have been taken over by the US Department of Labor Bureau of Labor Statistics. This is the final phase of transition in this program, which began in 2008. As a result of changes in the estimation procedures, you are likely to see more variability in month-to-month estimates of job counts. Caution should be used in interpreting any single month's estimate. The data are best interpreted to identify trends and cycles over several months and quarters. If you have any questions about these changes, please email us at: dol.lmi@ct.gov. Danbury and Waterbury LMA's are now not seasonally adjusted.

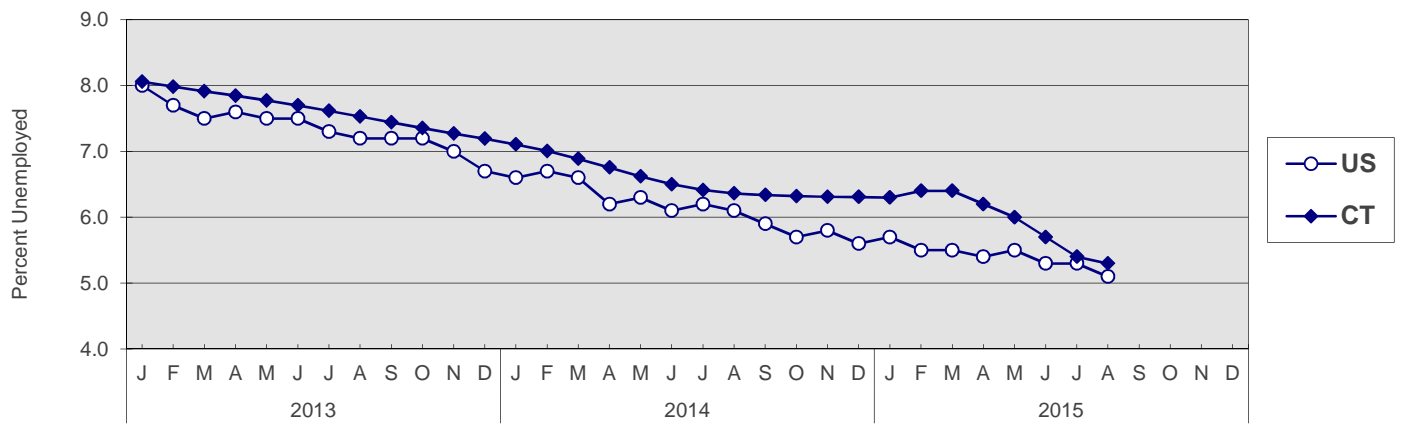
UNEMPLOYMENT

Persons Unemployed - by Place of Residence

CONNECTICUT AND THE UNITED STATES - Seasonally Adjusted

	August 2015 P		August 2014 R		Change		July 2015 R	
	Number	Rate	Number	Rate	Number	Points	Number	Rate
CONNECTICUT								
Unemployed	100,200	5.3	120,000	6.4	-19,800	-1.1	103,700	5.4
Labor Force	1,903,100		1,886,800		16,300		1,910,800	
UNITED STATES								
Unemployed	8,029,000	5.1	9,568,000	6.1	-1,539,000	-1.0	8,266,000	5.3
Labor Force	157,065,000		156,018,000		1,047,000		157,106,000	

U.S. AND CONNECTICUT UNEMPLOYMENT RATES - Seasonally Adjusted 2013 - 2015



LABOR MARKET AREAS - Not Seasonally Adjusted

	August 2015 P		August 2014 R		Change		July 2015 R	
	Number	Rate	Number	Rate	Number	Points	Number	Rate
Bridgeport-Stamford								
Danbury								
Danielson-Norwalk								
Worcester NECTA								
Hampton LMA								
Enfield								
Hartford								
New Haven								
Norwich-New Britain								
Torrington-Norwalk								
Torrington N								
Litchfield								
Waterbury								
CONNECTICUT	105,600	5.5	127,000	6.7	-21,400	-1.2	109,200	5.6
UNITED STATES	8,162,000	5.2	9,787,000	6.3	-1,625,000	-1.1	8,805,000	5.6

Release of the August 2015 sub-state labor force data is restricted by the U.S. Bureau of Labor Statistics until Friday, September 18, 2015.

An updated *Connecticut Labor Situation* with these data will be available on our website at that time at:

<http://www1.ctdol.state.ct.us/lmi/laborsit.pdf>

P = Preliminary

R = Revised

Labor force data included in this publication are developed in cooperation with the U.S. Department of Labor, Bureau of Labor Statistics.

* Worcester NECTA, CT part and Hampton LMA are combined ** Torrington Metropolitan NECTA and Litchfield LMA are combined

UNEMPLOYMENT RATES

Not Seasonally Adjusted

Release of the August 2015 sub-state labor force data is restricted by the U.S. Bureau of Labor Statistics until Friday, September 18, 2015.

An updated *Connecticut Labor Situation* with these data will be available on our website at that time at:

<http://www1.ctdol.state.ct.us/lmi/laborsit.pdf>.

HOURS AND EARNINGS

CONNECTICUT Statewide - Not Seasonally Adjusted

	Average Weekly Earnings				Average Weekly Hours				Average Hourly Earnings			
	August 2015 P	August 2014	Change over Yr.	July 2015 R	August 2015 P	August 2014	Change over Yr.	July 2015 R	August 2015 P	August 2014	Change over Yr.	July 2015 R
Private Industry All Employees	\$991.24	\$945.72	\$45.52	\$961.59	33.9	33.8	0.1	33.4	\$29.24	\$27.98	\$1.26	\$28.79
Manufacturing*												
Production Workers	\$1,004.41	\$900.00	\$104.41	\$993.67	39.7	40.0	-0.3	39.4	\$25.30	\$22.50	\$2.80	\$25.22

* Production worker data have been impacted by the loss of a large, high-paying manufacturer from the monthly sample.

P = Preliminary

R = Revised

Hours and earnings are also developed for the state's major industry sectors and Labor Market Areas. They can be found on our website at: www.ctdol.state.ct.us/lmi.

TRENDS

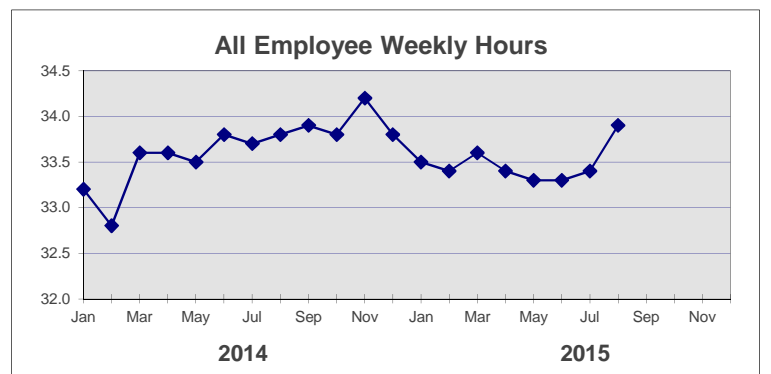
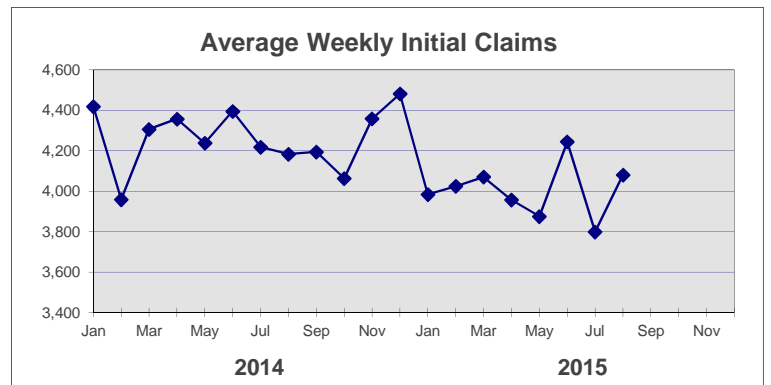
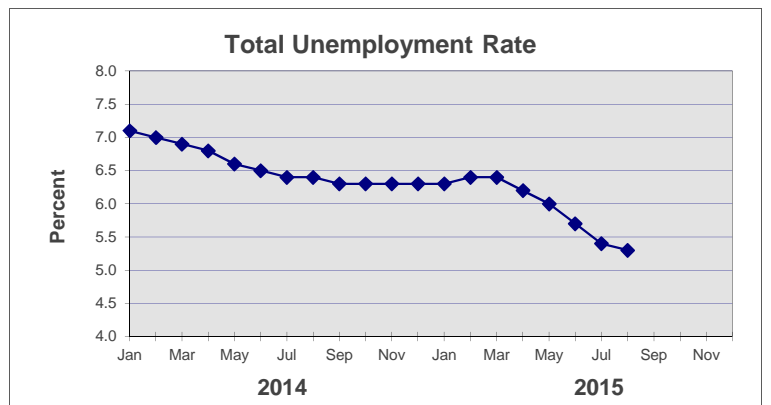
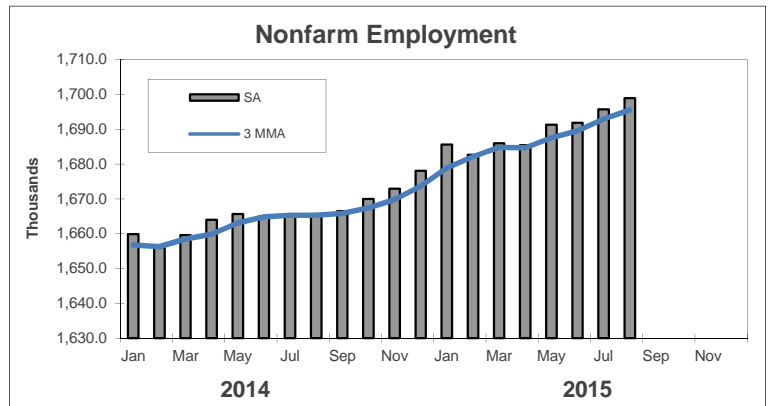
Seasonally Adjusted

	Nonfarm Employment (000s)	Total Unemployment Rate
2014		
Jan	1,659.9	7.1
Feb	1,656.1	7.0
Mar	1,659.6	6.9
Apr	1,664.0	6.8
May	1,665.7	6.6
Jun	1,664.9	6.5
Jul	1,665.4	6.4
Aug	1,665.7	6.4
Sep	1,666.5	6.3
Oct	1,670.0	6.3
Nov	1,672.9	6.3
Dec	1,678.1	6.3

2015		
Jan	1,685.6	6.3
Feb	1,682.7	6.4
Mar	1,686.0	6.4
Apr	1,685.4	6.2
May	1,691.3	6.0
Jun	1,691.9	5.7
Jul	1,695.7 R	5.4 R
Aug	1,698.9 P	5.3 P
Sep		
Oct		
Nov		
Dec		

	Avg Weekly Initial Claims	All Employee Weekly Hours*
2014		
Jan	4,418	33.2
Feb	3,959	32.8
Mar	4,306	33.6
Apr	4,357	33.6
May	4,238	33.5
Jun	4,395	33.8
Jul	4,218	33.7
Aug	4,183	33.8
Sep	4,194	33.9
Oct	4,063	33.8
Nov	4,358	34.2
Dec	4,481	33.8

2015		
Jan	3,984	33.5
Feb	4,024	33.4
Mar	4,070	33.6
Apr	3,956	33.4
May	3,875	33.3
Jun	4,244	33.3
Jul	3,799	33.4 R
Aug	4,080	33.9 P
Sep		
Oct		
Nov		
Dec		



* Not seasonally adjusted

P = Preliminary

R = Revised

** Labor-management dispute