



LABOR SITUATION

Office of Research
Sharon M. Palmer, Commissioner

FOR IMMEDIATE RELEASE

July 2015 Data
CT Unemployment Rate = 5.4%
US Unemployment Rate = 5.3%

Connecticut gains 4,100 jobs in July as unemployment rate falls to 5.4%

WETHERSFIELD, August 20, 2015 – Preliminary Connecticut July nonfarm employment numbers from the U.S. Bureau of Labor Statistics (BLS) establishment survey show the state increased jobs by 4,100 (0.24%) last month to a level of 1,696,000, seasonally adjusted. This is the third monthly nonfarm job gain in a row, signifying a fairly strong summer so far. The state is now estimated to have added 30,600 nonfarm positions (1.84%, 2,550 jobs per month) over the year. June's small initial nonfarm job gain of a 600 (0.04%) was not revised but some underlying industry *supersector* components did fluctuate.

The unemployment rate for July 2015 was 5.4% in Connecticut, seasonally adjusted, now much closer to the U.S. unemployment rate (5.3%). This is down three-tenths of a percentage point from the revised June 2015 unemployment rate of 5.7% and down a full percentage point from the July 2014 unemployment rate of 6.4%. As summer approached this year, the state's unemployment rate declined substantially, down from 6.0% in May 2015. Connecticut's unemployment rate has not been this low since May 2008, when it was also 5.4%.

"The pace of decline in the state's unemployed has accelerated in the last three months," said Andy Condon, Director of the Office of Research. "This has brought Connecticut's unemployment rate to a level nearly identical with the U.S. average."

Nonfarm Jobs Detail (business establishment survey)

Initial nonfarm job estimates indicate the state added 4,100 positions (0.24%) in July 2015, seasonally adjusted. The July survey showed six of the ten major industry *supersectors* gaining employment, while four industries declined. Since July 2014, statewide nonfarm job growth now equals 30,600 (1.84%), with nine of the ten major industry *supersectors* exhibiting increased employment. Only the relatively small **information** (31,700) *supersector* is showing a slight decline (-200, -0.6%) over the year.

Connecticut's **private sector** added 3,000 (0.21%) jobs this July and has now grown by 29,800 (2.09%) over the year. The **government** *supersector* also contributed to job gains in July (1,100, 0.46%) and now is also participating in job growth over the year (800, 0.78%).

The **professional and business services** (2,700, 1.3%) *supersector* was the largest job gainer last month with a very strong administrative and support service component (3,200, 3.6%), which includes the temporary help and landscaping segments. Another large gain was experienced in the **education and health services** (1,600, 0.5%) *supersector*. **Financial activities** (1,100, 0.8%) and the **government** (1,100, 0.5%) *supersectors* both added 1,100 positions. **Financial activities**, which were very slow to recover from the recession, turned positive lately over the year (2,600, 2.0%), while local government (1,300, 0.8%) supported July's **government** gain. The **manufacturing** *supersector* was higher last month (600, 0.4%) and a small gain was also registered in **other services** (100, 0.2%).

The combined **construction and closely related mining** (-2,300, -3.8%) *supersector* led the job declining *supersectors* this July. Although **construction and mining** lost the same number of jobs in July that it had gained in June, it still remains positive with growth over the year (1,900, 3.3%). Smaller job losses were seen in **information** (-300, -0.9%), **leisure and hospitality** (-300, -0.2%), and **trade, transportation & utilities** (-200, -0.1%). **Leisure and hospitality** (6,200, 4.1%) still leads all ten major industry *supersectors* in job growth (magnitude) since July 2014.

The year-to-date Connecticut nonfarm job growth pace (seasonally adjusted) for the first seven months of 2015 is 17,900 compared to 12,400 for the first seven months of 2014.

Recession recovery: Connecticut has now recovered 102,000 positions, or 85.7% of the 119,000 seasonally adjusted total nonfarm jobs that were lost in the state during the March 2008 - February 2010 employment downturn. Connecticut's jobs recovery is now 65 months old and is averaging about 1,569 jobs per month since February 2010. There have been 45 monthly job gains (69.2%), 19 monthly job losses, and one unchanged month (November 2010) in the ongoing recovery period. The **private sector** has recovered employment at a faster pace (approximately 1,665 per month) and has now replenished 108,200 (97.0%) of the 111,600 private sector jobs that were lost during the same employment recession. The state needs to reach the 1,713,000 job level to enter a full nonfarm employment expansionary phase. This will require an additional 17,000 nonfarm jobs. A total of just 3,400 more private sector positions are needed to have a fully recovered private sector. The **government supersector** has continued to lose positions (net -6,200) during the employment recovery timeframe.

Labor Market Areas (LMAs): The July 2015 preliminary nonfarm job statistics indicate that two of the four major Connecticut Labor Market Areas that are *seasonally adjusted* by the BLS generated job gains while two declined. The two largest regional labor markets in the state, the **Hartford-West Hartford-East Hartford LMA** (3,500, 0.6%, 578,400) and the **Bridgeport-Stamford-Norwalk LMA** (2,600, 0.6%, 413,800) posted solid seasonal job gains while the **New Haven LMA** (-900, -0.3%, 280,700) and the **Norwich-New London-Westerly LMA** (-200, -0.2%, 127,100) experienced seasonally adjusted job losses. Over the year, four of the six major Connecticut BLS-recognized LMAs have produced annualized job gains, with just the **Norwich-New London-Westerly LMA** lower (-1,200, -0.9%, seasonally adjusted over the year), and the **Danbury LMA** unchanged (not seasonally adjusted over the year). *Note: The six major Connecticut LMAs are estimated independently (only the largest four LMAs are officially seasonally adjusted) from the statewide numbers by the BLS and cover over 90% of the nonfarm employment in the state. These estimates will not fully sum to the statewide total.*

Hours and Earnings: The **private sector** workweek, not seasonally adjusted, averaged 33.4 hours in July 2015, down three-tenths of an hour from the same month a year ago (33.7, -0.9%). Average hourly earnings at \$28.71, not seasonally adjusted, were up 81 cents, or 2.9%, from the July 2014 estimate. The resulting average **private sector** weekly pay was figured at \$958.91, up \$18.68, or 2.0% higher than a year ago. The 12-month percent change in the Consumer Price Index for All Urban Consumers (CPI-U, U.S. City Average, not seasonally adjusted) in July 2015 was only 0.2%. Information for the manufacturing production workweek and earnings can be found in the table section of this release under the "Hours and Earnings" data category. *Current all-employee private sector hours and earnings estimates can be volatile due to fluctuating sample responses.*

Labor Force Data (residential household survey)

Connecticut's unemployment rate was estimated at **5.4%** for July 2015 (seasonally adjusted). This is down by three-tenths of a percentage point from the June 2015 figure (5.7%), and down a full percentage point from the July 2014 rate of 6.4%. Connecticut's unemployment rate has not been this low since May 2008, when it was also 5.4%, more than seven years ago. The big monthly drops in the state unemployment rate in June and July this year (down three-tenths of a percent each month, seasonally adjusted) have come on receding labor pools, but the labor force had just reached a new estimated all-time high in May 2015 (at 1,921,726*). The United States unemployment rate was 5.3% in July, unchanged from June 2015, but lower by nine-tenths of a percentage point from a year ago (6.2%). The Connecticut jobless rate is now much closer to the US unemployment rate in recent months. The *not seasonally adjusted* unemployment rates were identical in July at 5.6% (See page 5).

Unemployment: Based on the Local Area Unemployment Statistics model (LAUS - a statistical model integrating residential survey data), the number of Connecticut unemployed, seasonally adjusted, declined by a statistically significant 5,185 (-4.8%) over the month to 103,733 in July 2015. The number of unemployed state residents has fallen by 17,120 (-14.2%) since July 2014 (also considered statistically significant).

The July 2015 seasonally adjusted average weekly initial unemployment claims for first-time Connecticut filers dropped by 445 claimants (-10.5%) to 3,799, and were down by 419 claims (-9.9%) from the July 2014 level of 4,218. The last time monthly average weekly initial unemployment claims were lower was December 2000 (3,138).

*The nonfarm employment estimate, derived from a survey of businesses, is a measure of jobs in the state; the unemployment rate and labor force estimates, are based on a household survey, and measure the work status of people who live in Connecticut. Overall, as the national and state economies recover, volatility in monthly numbers can be expected. **Job and employment estimates are best understood in the context of their movement over several months rather than observed changes in a single month's value.***

** Consistent labor force estimates are available since 1976, and the May 2015 labor force was the largest recorded for the State of Connecticut in that time. Other data suggest that the labor force prior to 1976 was even smaller, so the May 2015 level was likely an all-time high.*

Next Connecticut Labor Situation release: Thursday, September 17, 2015 (August 2015 data)

Contact: Communications Office

(860) 263-6535

8-20-15

Labor market information is available on the Internet at www.ctdol.state.ct.us/lmi
200 Folly Brook Boulevard, Wethersfield, CT 06109-1114 - www.ct.gov/dol
An Equal Opportunity/Affirmative Action Employer

NONFARM EMPLOYMENT

Jobs - by Place of Work

CONNECTICUT AND THE UNITED STATES - Seasonally Adjusted

	July 2015 P	June 2015 R	May 2015	April 2015	July 2014	Over Month Change	Over Month Rate	Over Year Change	Over Year Rate
CONNECTICUT	1,696,000	1,691,900	1,691,300	1,685,400	1,665,400	4,100	0.2%	30,600	1.8%
Total Private	1,457,000	1,454,000	1,451,400	1,445,300	1,427,200	3,000	0.2%	29,800	2.1%
Goods Producing Industries									
Mining	500	600	500	500	600	-100	-16.7%	-100	-16.7%
Construction	58,300	60,500	58,300	56,000	56,300	-2,200	-3.6%	2,000	3.6%
Manufacturing	161,200	160,600	159,800	160,900	159,200	600	0.4%	2,000	1.3%
Durable Goods	125,700	125,000	124,500	125,700	123,800	700	0.6%	1,900	1.5%
Nondurable Goods	35,500	35,600	35,300	35,200	35,400	-100	-0.3%	100	0.3%
Service Providing Industries									
Trade, Transportation & Utilities	306,700	306,900	306,900	303,600	300,700	-200	-0.1%	6,000	2.0%
Wholesale	62,900	62,500	63,300	62,800	63,100	400	0.6%	-200	-0.3%
Retail	190,400	190,700	189,500	187,500	185,100	-300	-0.2%	5,300	2.9%
Transp, Warehousing & Utilities	53,400	53,700	54,100	53,300	52,500	-300	-0.6%	900	1.7%
Information	31,700	32,000	31,900	31,700	31,900	-300	-0.9%	-200	-0.6%
Financial Activities	131,300	130,200	129,500	129,500	128,700	1,100	0.8%	2,600	2.0%
Finance & Insurance	111,300	110,400	109,900	109,900	109,300	900	0.8%	2,000	1.8%
Real Estate, Rental & Leasing	20,000	19,800	19,600	19,600	19,400	200	1.0%	600	3.1%
Professional & Business Services	217,100	214,400	214,500	214,600	211,800	2,700	1.3%	5,300	2.5%
Prof, Scientific & Tech Services	95,800	96,000	94,800	95,500	95,400	-200	-0.2%	400	0.4%
Management of Companies	29,800	30,100	30,300	30,500	30,700	-300	-1.0%	-900	-2.9%
Admn & Support & Waste Mgt Serv	91,500	88,300	89,400	88,600	85,700	3,200	3.6%	5,800	6.8%
Educational & Health Services	330,600	329,000	330,100	330,100	325,400	1,600	0.5%	5,200	1.6%
Educational Services	63,000	62,800	62,900	64,000	63,200	200	0.3%	-200	-0.3%
Health Care & Social Assistance	267,600	266,200	267,200	266,100	262,200	1,400	0.5%	5,400	2.1%
Leisure and Hospitality	155,800	156,100	156,100	154,700	149,600	-300	-0.2%	6,200	4.1%
Arts, Entertainment & Recreation	27,800	29,000	29,500	27,800	26,200	-1,200	-4.1%	1,600	6.1%
Accommodation & Food Services	128,000	127,100	126,600	126,900	123,400	900	0.7%	4,600	3.7%
Other Services	63,800	63,700	63,800	63,700	63,000	100	0.2%	800	1.3%
Government**	239,000	237,900	239,900	240,100	238,200	1,100	0.5%	800	0.3%
UNITED STATES	142,071,000	141,856,000	141,625,000	141,365,000	139,156,000	215,000	0.2%	2,915,000	2.1%

LABOR MARKET AREAS (LMA)

Labor Market Area employment estimates are made independently of Statewide estimates.

Seasonally Adjusted data	July 2015 P	June 2015 R	May 2015	April 2015	July 2014	Over Month Change	Over Month Rate	Over Year Change	Over Year Rate
Bridgeport-Stamford-Norwalk	413,800	411,200	409,300	410,900	405,700	2,600	0.6%	8,100	2.0%
Hartford	578,400	574,900	576,200	571,500	564,400	3,500	0.6%	14,000	2.5%
New Haven	280,700	281,600	281,600	282,500	278,700	-900	-0.3%	2,000	0.7%
Norwich-New London-Westerly	127,100	127,300	127,800	126,600	128,300	-200	-0.2%	-1,200	-0.9%
Danbury - Not Seasonally Adjusted	78,200	79,600	79,600	78,700	78,200	-1,400	-1.8%	0	0.0%
Waterbury - Not Seasonally Adjusted	68,600	69,200	68,900	67,800	66,700	-600	-0.9%	1,900	2.8%
<i>Not Seasonally Adjusted data (Non-Classified Areas, State estimated not BLS)</i>									
Enfield	45,600	46,100	45,600	46,100	44,800	-500	-1.1%	800	1.8%
Torrington-Northwest	35,000	34,700	34,500	33,800	34,700	300	0.9%	300	0.9%
Danielson-Northeast	27,100	27,700	27,700	27,600	27,100	-600	-2.2%	0	0.0%

* Less than 0.05% ** Includes Native American tribal government employment

P = Preliminary

R = Revised

Starting with March, 2011, our monthly statewide and major LMA nonfarm job estimates have been taken over by the US Department of Labor Bureau of Labor Statistics. This is the final phase of transition in this program, which began in 2008. As a result of changes in the estimation procedures, you are likely to see more variability in month-to-month estimates of job counts. Caution should be used in interpreting any single month's estimate. The data are best interpreted to identify trends and cycles over several months and quarters. If you have any questions about these changes, please email us at: dol.lmi@ct.gov. Danbury and Waterbury LMA's are now not seasonally adjusted.

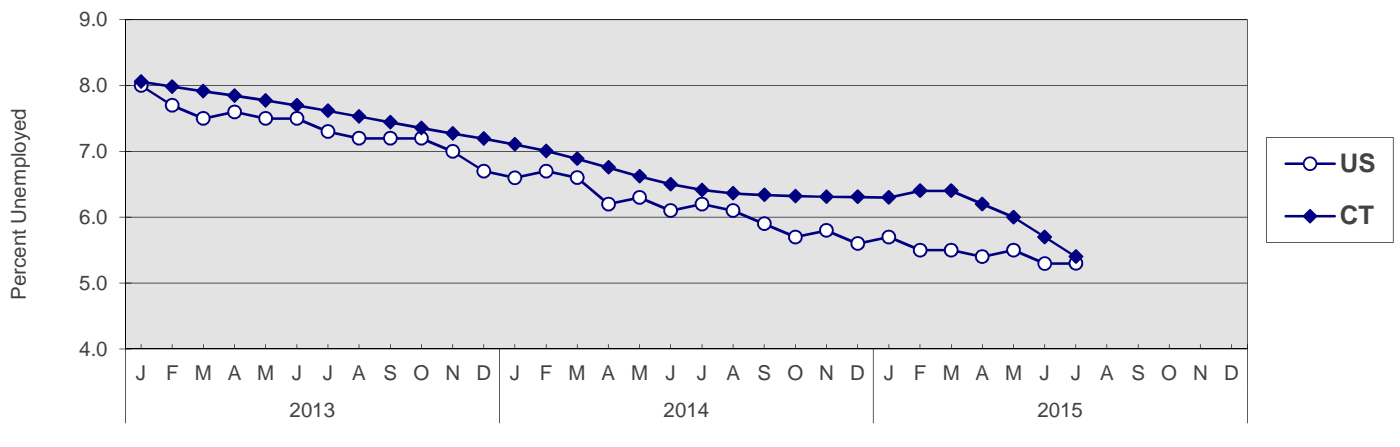
UNEMPLOYMENT

Persons Unemployed - by Place of Residence

CONNECTICUT AND THE UNITED STATES - Seasonally Adjusted

	July 2015 P		July 2014 R		Change		June 2015 R	
	Number	Rate	Number	Rate	Number	Points	Number	Rate
CONNECTICUT								
Unemployed	103,700	5.4	120,900	6.4	-17,200	-1.0	108,900	5.7
Labor Force	1,910,900		1,884,300		26,600		1,918,100	
UNITED STATES								
Unemployed	8,266,000	5.3	9,648,000	6.2	-1,382,000	-0.9	8,299,000	5.3
Labor Force	157,106,000		156,048,000		1,058,000		157,037,000	

U.S. AND CONNECTICUT UNEMPLOYMENT RATES - Seasonally Adjusted 2013 - 2015



LABOR MARKET AREAS - Not Seasonally Adjusted

	July 2015 P		July 2014 R		Change		June 2015 R	
	Number	Rate	Number	Rate	Number	Points	Number	Rate
Bridgeport-Stamford								
Danbury								
Danielson-Norwalk								
Worcester NECTA								
Hampton LMA								
Enfield								
Hartford								
New Haven								
Norwich-New Britain								
Torrington-Norwalk								
Torrington-Norwalk								
Litchfield								
Waterbury								
CONNECTICUT	109,200	5.6	131,400	6.9	-22,200	-1.3	104,000	5.4
UNITED STATES	8,805,000	5.6	10,307,000	6.5	-1,502,000	-0.9	8,638,000	5.5

Release of the July 2015 sub-state labor force data is restricted by the U.S. Bureau of Labor Statistics until Friday, August 21, 2015. An updated *Connecticut Labor Situation* with these data will be available on our website at that time at:
<http://www1.ctdol.state.ct.us/lmi/laborsit.pdf>

P = Preliminary

R = Revised

Labor force data included in this publication are developed in cooperation with the U.S. Department of Labor, Bureau of Labor Statistics.

* Worcester NECTA, CT part and Hampton LMA are combined ** Torrington Metropolitan NECTA and Litchfield LMA are combined

UNEMPLOYMENT RATES

Not Seasonally Adjusted

Release of the July 2015 sub-state labor force data is restricted by the U.S. Bureau of Labor Statistics until Friday, August 21, 2015. An updated *Connecticut Labor Situation* with these data will be available on our website at that time at:
<http://www1.ctdol.state.ct.us/lmi/laborsit.pdf>.

HOURS AND EARNINGS

CONNECTICUT Statewide - Not Seasonally Adjusted

	Average Weekly Earnings				Average Weekly Hours				Average Hourly Earnings			
	July 2015 P	July 2014	Change over Yr.	June 2015 R	July 2015 P	July 2014	Change over Yr.	June 2015 R	July 2015 P	July 2014	Change over Yr.	June 2015 R
Private Industry All Employees	\$958.91	\$940.23	\$18.68	\$957.38	33.4	33.7	-0.3	33.3	\$28.71	\$27.90	\$0.81	\$28.75
Manufacturing*												
Production Workers	\$997.77	\$889.14	\$108.63	\$1,000.30	39.5	40.6	-1.1	39.6	\$25.26	\$21.90	\$3.36	\$25.26

* Production worker data have been impacted by the loss of a large, high-paying manufacturer from the monthly sample.

P = Preliminary R = Revised

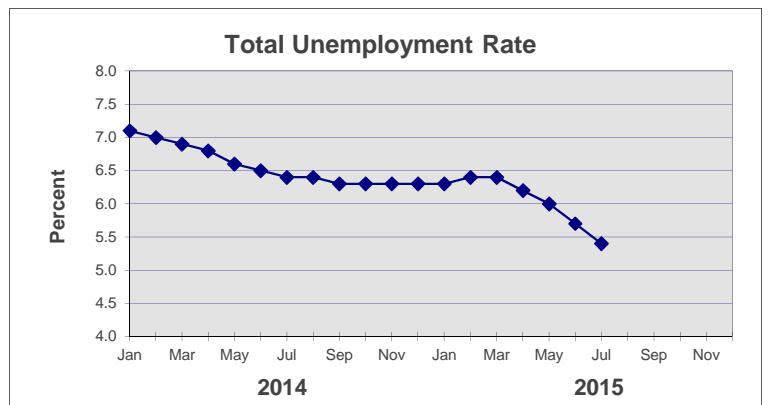
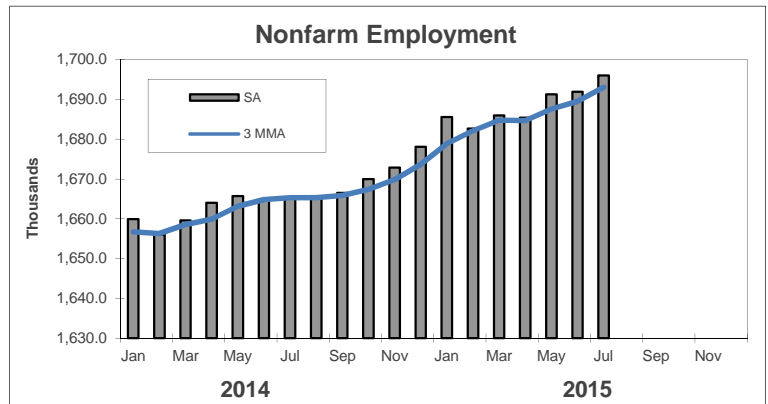
Hours and earnings are also developed for the state's major industry sectors and Labor Market Areas. They can be found on our website at: www.ctdol.state.ct.us/lmi.

TRENDS

Seasonally Adjusted

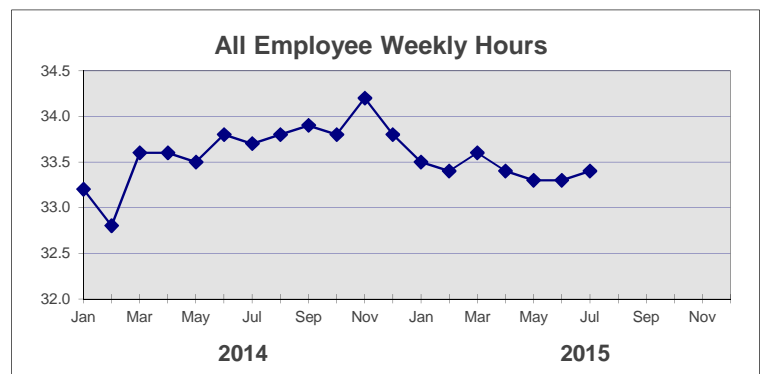
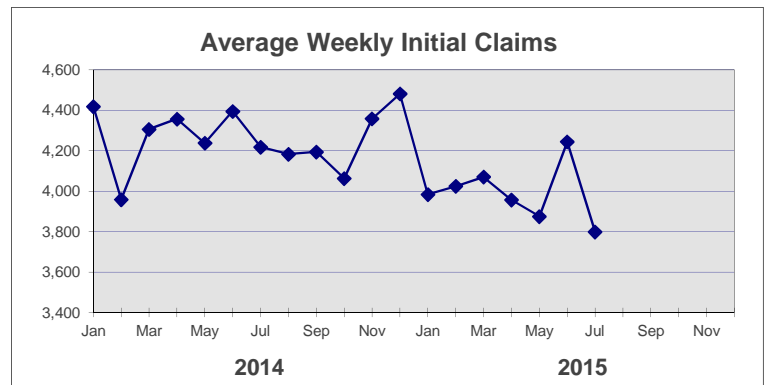
	Nonfarm Employment (000s)	Total Unemployment Rate
2014		
Jan	1,659.9	7.1
Feb	1,656.1	7.0
Mar	1,659.6	6.9
Apr	1,664.0	6.8
May	1,665.7	6.6
Jun	1,664.9	6.5
Jul	1,665.4	6.4
Aug	1,665.7	6.4
Sep	1,666.5	6.3
Oct	1,670.0	6.3
Nov	1,672.9	6.3
Dec	1,678.1	6.3

2015		
Jan	1,685.6	6.3
Feb	1,682.7	6.4
Mar	1,686.0	6.4
Apr	1,685.4	6.2
May	1,691.3	6.0
Jun	1,691.9 R	5.7 R
Jul	1,696.0 P	5.4 P
Aug		
Sep		
Oct		
Nov		
Dec		



	Avg Weekly Initial Claims	All Employee Weekly Hours*
2014		
Jan	4,418	33.2
Feb	3,959	32.8
Mar	4,306	33.6
Apr	4,357	33.6
May	4,238	33.5
Jun	4,395	33.8
Jul	4,218	33.7
Aug	4,183	33.8
Sep	4,194	33.9
Oct	4,063	33.8
Nov	4,358	34.2
Dec	4,481	33.8

2015		
Jan	3,984	33.5
Feb	4,024	33.4
Mar	4,070	33.6
Apr	3,956	33.4
May	3,875	33.3
Jun	4,244	33.3 R
Jul	3,799	33.4 P
Aug		
Sep		
Oct		
Nov		
Dec		



* Not seasonally adjusted

P = Preliminary

R = Revised

** Labor-management dispute