



LABOR SITUATION

Office of Research
Sharon M. Palmer, Commissioner

FOR IMMEDIATE RELEASE

June 2015 Data
CT Unemployment Rate = 5.7%
US Unemployment Rate = 5.3%

Unemployment rate falls to 5.7% in June; private sector adds 2,600 jobs

WETHERSFIELD, July 20, 2015 – Preliminary nonfarm employment numbers for Connecticut from the U.S. Bureau of Labor Statistics's establishment survey show the state added 600 jobs (0.04%) in June 2015, seasonally adjusted. The state has now increased total nonfarm job levels by 27,000 (1.62%, 2,250 jobs per month) over the year to 1,691,900. Connecticut's private sector added 2,600 positions last month and has now increased job levels by 27,900 since June 2014 (1.96%, 2,325 jobs per month). May's initially posted estimate of a nonfarm job increase of 6,400 (0.38%) was revised 500 positions lower to a 5,900 nonfarm jobs gain (0.35%).

Connecticut's unemployment rate, seasonally adjusted, was estimated at 5.7% in June 2015, down three-tenths of a percentage point from the revised May 2015 figure, according to the Local Area Unemployment Statistics (LAUS) model from the U.S. Bureau of Labor Statistics. The state's unemployment rate is lower by eight-tenths of a percentage point from June 2014 (6.5%). The number of Connecticut's unemployed residents has declined by 13,414 (-11.0%) to 108,979 since June 2014.

"Above trend private-sector job growth looks to be continuing, while the jobless rate has recently declined significantly," said Andy Condon, Director of the Office of Research. "Connecticut's unemployment rate, which is below 6% for the first time since August 2008, has not been this low since July 2008."

Nonfarm Jobs Detail (business establishment survey)

Preliminary nonfarm job estimates indicate the state increased employment by 600 positions (0.04%) in June 2015, seasonally adjusted. Four of the ten major industry *supersectors* experienced employment gains, while five declined, and the **information** *supersector* was unchanged. Since June 2014, statewide job growth now totals 27,000 (1.62%), as eight of the ten major industry *supersectors* have increased employment while the **government** sector has declined and only the **information** *supersector* has remained unchanged.

Connecticut's **private sector** gained 2,600 (0.18%) nonfarm jobs in June 2015, and has now increased private employment by 27,900 (1.96%) jobs over the year. In contrast, the **government** *supersector* lost 2,000 net jobs in June (-0.83%), led lower by a weak local government subcomponent (-2,100, -1.4%). The **government** *supersector* has lost 900 positions (-0.38%) over the year.

Four of the ten major industry *supersectors* added jobs in June, as five declined and the **information** *supersector* was unchanged. The combined **construction and mining** (2,300, 3.9%) *supersector* was the best performing industry grouping last month following a strong gain in May. The next three positive industry *supersectors* all increased by 700 jobs each: **financial activities** (0.5%), **manufacturing** (0.4%), and **professional and business services** (0.3%). The **financial activities** *supersector* has posted over-the-year increases every month this year.

The **government** *supersector* (-2,000, -0.8%) was the largest of five job declining industries in June. Local government (-2,100, -1.4%) was the main contributor to the job loss. The timing of local school closings can shift public school employment levels during the summer months and this likely impacted local government employment for June. The **leisure and hospitality** (-900, -0.6%) *supersector* was also somewhat lower last month. The **other services** (-400, -0.6%) and the **trade, transportation & utilities** (-400, -0.1%, TTU) *supersector* each relinquished 400 jobs in June. Retail trade (+1,000, +0.5%) employment continued to be strong in June after May's Tanger Outlet opening at Foxwood's Indian Casino, but wholesale trade (-800, -1.3%) and transportation and utilities (-600, -1.1%) job losses more than offset the retail gains. The **education and health services** (-100, -0.03%) *supersector*, the largest of all of the state's industry *supersectors* in employment at 330,000 seasonally adjusted, was just marginally lower.

The year-to-date Connecticut nonfarm job growth pace (seasonally adjusted) for the first half of 2015 is 13,800 compared to 11,900 for the first six months of 2014.

Recession recovery: Connecticut has now recovered 97,900 positions, or 82.3% of the 119,000 seasonally adjusted total nonfarm jobs that were lost in the state during the March 2008 - February 2010 employment recession. Connecticut's jobs recovery is now 64 months old and is averaging about 1,530 jobs per month since February 2010. There have been 44 monthly job gains (68.8%), 19 monthly job losses, and one unchanged month (November 2010) in the ongoing recovery timeframe. The **private sector** has recovered employment at a faster pace (approximately 1,644 per month) and has now replenished 105,200 (94.3%) of the 111,600 private sector jobs that were lost during the employment downturn. The state needs to reach the 1,713,000 job level to enter a nonfarm employment expansionary phase. This will require an additional 21,100 nonfarm jobs. A total of just 6,400 more private sector positions are needed to have a fully recovered private sector. The **government supersector** has continued to lose positions (net -7,300) during the employment recovery period.

Labor Market Areas (LMAs): June 2015 preliminary nonfarm job statistics indicate that two of the four major Connecticut Labor Market Areas that are seasonally adjusted by the BLS produced job gains while two declined. In a display of rotating regional strength this month, the two gainers and decliners reversed positions from the two up and two down in the prior month. This time the **Bridgeport-Stamford-Norwalk LMA** (2,100, 0.5%) and **New Haven LMA** (100, 0.04%) produced job growth while the **Hartford-West Hartford-East Hartford LMA** (-1,500, -0.3%) and **Norwich-New London-Westerly LMA** (-500, -0.4%) experienced seasonally adjusted job declines. Since June 2014, four of the six major Connecticut BLS-recognized LMAs have yielded annualized job gains, as have the three smaller state-estimated LMAs, with just the **Norwich-New London-Westerly LMA** (-1,100, -0.9%, seasonally adjusted over the year) and the **Danbury LMA** (-200, -0.3%, not seasonally adjusted over the year) revealing job losses. *Note: The six major Connecticut LMAs are estimated independently (only the largest four LMAs are officially seasonally adjusted) from the statewide numbers by the BLS and cover over 90% of the nonfarm employment in the state. These estimates will not fully sum to the statewide total. Due to town composition changes of greater than 4% in two of the six Bureau of Labor Statistics-recognized LMAs that went into effect at the beginning of this year, the Danbury and Waterbury LMAs are no longer seasonally adjusted by BLS.*

Hours and Earnings: The **private sector** workweek, not seasonally adjusted, averaged 33.3 hours in June 2015, down five-tenths of an hour from the same month a year ago (33.8, -1.5%). Average hourly earnings at \$28.64, not seasonally adjusted, were up 51 cents, or 1.8%, from the June 2014 average. The resultant average **private sector** weekly pay was calculated at \$953.71, up just \$2.92, or 0.3% higher than a year ago. The 12-month percent change in the Consumer Price Index for All Urban Consumers (CPI-U, U.S. City Average, not seasonally adjusted) in June 2015 was only 0.1%. Information for the manufacturing production workweek and earnings can be found in the table section of this release under the "Hours and Earnings" data category. *Current all-employee private sector hours and earnings estimates can be volatile due to fluctuating sample responses.*

Labor Force Data (residential household survey)

Connecticut's unemployment rate was estimated at **5.7%** for June 2015 (seasonally adjusted). This is down by three-tenths of a percentage point from the May 2015 figure, and down eight-tenths of a percentage point from the June 2014 rate of 6.5%. Connecticut's unemployment rate has not been below six percent since August 2008 (5.9%) and has not been this low since July 2008, when it was also 5.7%, almost seven years ago. The United States unemployment rate was 5.3% in June, lower by two-tenths of a percentage point from May 2015, and lower by eight-tenths of a percentage point from a year ago (6.1%).

Unemployment: Based on the Local Area Unemployment Statistics model (LAUS - a statistical model utilizing residential survey data), the number of Connecticut unemployed, seasonally adjusted, declined a statistically significant 6,100 (-5.3%) over the month to 108,979 in June 2015. The number of unemployed state residents has fallen by 13,414 (-11.0%) since June 2014. A string of 20 consecutive months of increasing monthly labor force growth in the state going back to September 2013 came to an end this month (-3,642, -0.2%), and levels pulled back from a *record all-time high labor force of 1,921,726 last month**. Over the year, labor force growth now shows a still robust increase of 35,362 (1.9%, which is considered statistically significant).

The June 2015 seasonally adjusted average weekly initial unemployment claims for first-time Connecticut filers rose over the month by 369 claimants (9.5%) to 4,244, but are down by 151 claims (-3.4%) from the June 2014 level of 4,395.

*The nonfarm employment estimate, derived from a survey of businesses, is a measure of jobs in the state; the unemployment rate and labor force estimates, are based on a household survey, and measure the work status of people who live in Connecticut. Overall, as the national and state economies recover, volatility in monthly numbers can be expected. **Job and employment estimates are best understood in the context of their movement over several months rather than observed changes in a single month's value.***

** Consistent labor force estimates are available since 1976 and the May 2015 labor force was the largest recorded for the State of Connecticut in that time. Other data suggest that the labor force prior to 1976 was even smaller, so the May 2015 level was likely an all-time high.*

Next Connecticut Labor Situation release: Thursday, August 20, 2015 (July 2015 data)

Contact: Communications Office

(860) 263-6535

07-20-15

Labor market information is available on the Internet at www.ctdol.state.ct.us/lmi
200 Folly Brook Boulevard, Wethersfield, CT 06109-1114 - www.ct.gov/dol
An Equal Opportunity/Affirmative Action Employer

NONFARM EMPLOYMENT

Jobs - by Place of Work

CONNECTICUT AND THE UNITED STATES - Seasonally Adjusted

	June 2015 P	May 2015 R	April 2015	March 2015	June 2014	Over Month Change	Over Month Rate	Over Year Change	Over Year Rate
CONNECTICUT	1,691,900	1,691,300	1,685,400	1,686,000	1,664,900	600	0.0%	27,000	1.6%
Total Private	1,454,000	1,451,400	1,445,300	1,447,400	1,426,100	2,600	0.2%	27,900	2.0%
Goods Producing Industries									
Mining	600	500	500	600	600	100	20.0%	0	0.0%
Construction	60,500	58,300	56,000	54,700	55,900	2,200	3.8%	4,600	8.2%
Manufacturing	160,500	159,800	160,900	159,700	159,400	700	0.4%	1,100	0.7%
Durable Goods	125,000	124,500	125,700	124,500	124,000	500	0.4%	1,000	0.8%
Nondurable Goods	35,500	35,300	35,200	35,200	35,400	200	0.6%	100	0.3%
Service Providing Industries									
Trade, Transportation & Utilities	306,500	306,900	303,600	304,900	300,800	-400	-0.1%	5,700	1.9%
Wholesale	62,500	63,300	62,800	63,000	63,200	-800	-1.3%	-700	-1.1%
Retail	190,500	189,500	187,500	189,200	185,100	1,000	0.5%	5,400	2.9%
Transp, Warehousing & Utilities	53,500	54,100	53,300	52,700	52,500	-600	-1.1%	1,000	1.9%
Information	31,900	31,900	31,700	31,700	31,900	0	0.0%	0	0.0%
Financial Activities	130,200	129,500	129,500	129,400	128,300	700	0.5%	1,900	1.5%
Finance & Insurance	110,400	109,900	109,900	109,800	109,200	500	0.5%	1,200	1.1%
Real Estate, Rental & Leasing	19,800	19,600	19,600	19,600	19,100	200	1.0%	700	3.7%
Professional & Business Services	215,200	214,500	214,600	217,300	212,000	700	0.3%	3,200	1.5%
Prof, Scientific & Tech Services	96,300	94,800	95,500	96,100	95,500	1,500	1.6%	800	0.8%
Management of Companies	30,100	30,300	30,500	30,400	30,900	-200	-0.7%	-800	-2.6%
Admn & Support & Waste Mgt Serv	88,800	89,400	88,600	90,800	85,600	-600	-0.7%	3,200	3.7%
Educational & Health Services	330,000	330,100	330,100	329,600	324,400	-100	0.0%	5,600	1.7%
Educational Services	63,700	62,900	64,000	63,700	63,300	800	1.3%	400	0.6%
Health Care & Social Assistance	266,300	267,200	266,100	265,900	261,100	-900	-0.3%	5,200	2.0%
Leisure and Hospitality	155,200	156,100	154,700	155,500	150,000	-900	-0.6%	5,200	3.5%
Arts, Entertainment & Recreation	29,000	29,500	27,800	28,500	26,300	-500	-1.7%	2,700	10.3%
Accommodation & Food Services	126,200	126,600	126,900	127,000	123,700	-400	-0.3%	2,500	2.0%
Other Services	63,400	63,800	63,700	64,000	62,800	-400	-0.6%	600	1.0%
Government**	237,900	239,900	240,100	238,600	238,800	-2,000	-0.8%	-900	-0.4%
UNITED STATES	141,842,000	141,619,000	141,365,000	141,178,000	138,907,000	223,000	0.2%	2,935,000	2.1%

LABOR MARKET AREAS (LMA)

Labor Market Area employment estimates are made independently of Statewide estimates.

Seasonally Adjusted data	June 2015 P	May 2015 R	April 2015	March 2015	June 2014	Over Month Change	Over Month Rate	Over Year Change	Over Year Rate
Bridgeport-Stamford-Norwalk	411,400	409,300	410,900	411,100	405,700	2,100	0.5%	5,700	1.4%
Hartford	574,700	576,200	571,500	571,300	564,200	-1,500	-0.3%	10,500	1.9%
New Haven	281,700	281,600	282,500	282,800	278,200	100	0.0%	3,500	1.3%
Norwich-New London-Westerly	127,300	127,800	126,600	127,100	128,400	-500	-0.4%	-1,100	-0.9%
Danbury - Not Seasonally Adjusted	79,500	79,600	78,700	78,000	79,700	-100	-0.1%	-200	-0.3%
Waterbury - Not Seasonally Adjusted	69,000	68,900	67,800	67,200	68,100	100	0.1%	900	1.3%
<i>Not Seasonally Adjusted data (Non-Classified Areas, State estimated not BLS)</i>									
Enfield	45,900	45,600	46,100	44,700	45,400	300	0.7%	500	1.1%
Torrington-Northwest	34,700	34,500	33,800	32,700	34,400	200	0.6%	300	0.9%
Danielson-Northeast	27,800	27,700	27,600	27,200	27,700	100	0.4%	100	0.4%

* Less than 0.05% ** Includes Native American tribal government employment

P = Preliminary

R = Revised

Starting with March, 2011, our monthly statewide and major LMA nonfarm job estimates have been taken over by the US Department of Labor Bureau of Labor Statistics. This is the final phase of transition in this program, which began in 2008. As a result of changes in the estimation procedures, you are likely to see more variability in month-to-month estimates of job counts. Caution should be used in interpreting any single month's estimate. The data are best interpreted to identify trends and cycles over several months and quarters. If you have any questions about these changes, please email us at: dol.lmi@ct.gov. Danbury and Waterbury LMA's are now not seasonally adjusted.

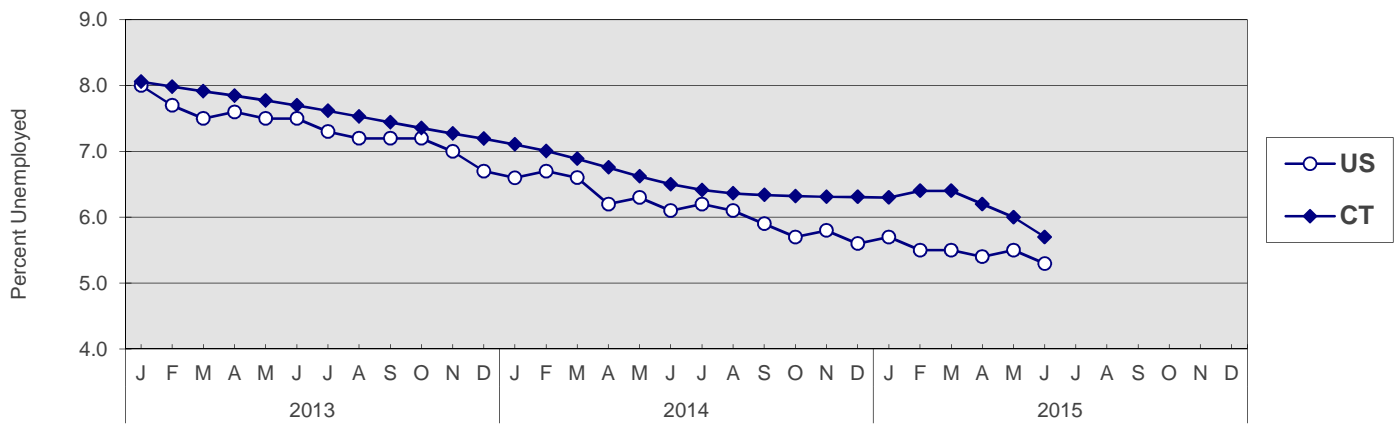
UNEMPLOYMENT

Persons Unemployed - by Place of Residence

CONNECTICUT AND THE UNITED STATES - Seasonally Adjusted

	June 2015 P		June 2014 R		Change		May 2015 R	
	Number	Rate	Number	Rate	Number	Points	Number	Rate
CONNECTICUT								
Unemployed	109,000	5.7	122,400	6.5	-13,400	-0.8	115,100	6.0
Labor Force	1,918,100		1,882,700		35,400		1,921,700	
UNITED STATES								
Unemployed	8,299,000	5.3	9,453,000	6.1	-1,154,000	-0.8	8,674,000	5.5
Labor Force	157,037,000		155,700,000		1,337,000		157,469,000	

U.S. AND CONNECTICUT UNEMPLOYMENT RATES - Seasonally Adjusted 2013 - 2015



LABOR MARKET AREAS - Not Seasonally Adjusted

	June 2015 P		June 2014 R		Change		May 2015 R	
	Number	Rate	Number	Rate	Number	Points	Number	Rate
Bridgeport-Stamford	24,900	5.2	29,800	6.4	-4,900	-1.2	25,500	5.4
Danbury	4,700	4.3	5,500	5.1	-800	-0.8	4,800	4.4
Danielson-Northeast*	2,500	5.7	3,100	7.1	-600	-1.4	2,600	5.9
Worcester NECTA	2,400	5.8	3,000	7.2	-600	-1.4	2,500	6.0
Hampton	100	4.4	100	5.9	0	-1.5	100	4.2
Enfield	2,500	5.0	3,000	6.0	-500	-1.0	2,500	5.0
Hartford	34,100	5.4	41,200	6.7	-7,100	-1.3	34,700	5.5
New Haven	18,100	5.5	22,200	6.8	-4,100	-1.3	18,500	5.6
Norwich-New London	8,400	5.8	10,100	7.0	-1,700	-1.2	8,500	6.0
Torrington-Northwest**	2,300	4.7	2,800	5.8	-500	-1.1	2,300	4.8
Torrington NECTA	1,500	5.5	1,800	6.8	-300	-1.3	1,500	5.7
Litchfield	800	3.6	1,000	4.5	-200	-0.9	800	3.7
Waterbury	7,800	6.8	9,200	8.1	-1,400	-1.3	8,000	7.0
CONNECTICUT	104,200	5.4	125,600	6.6	-21,400	-1.2	106,400	5.5
UNITED STATES	8,638,000	5.5	9,893,000	6.3	-1,255,000	-0.8	8,370,000	5.3

P = Preliminary

R = Revised

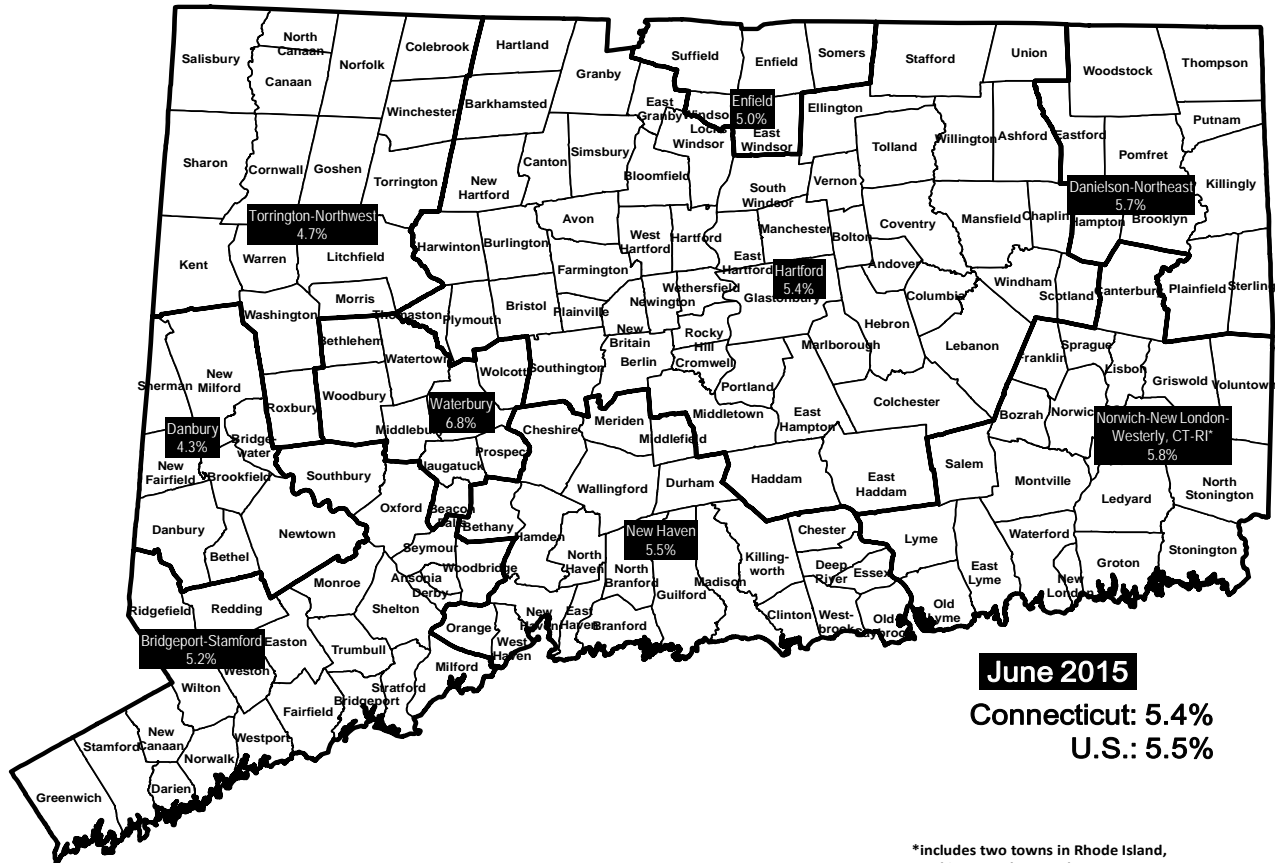
Labor force data included in this publication are developed in cooperation with the U.S. Department of Labor, Bureau of Labor Statistics.

* Worcester NECTA, CT part and Hampton LMA are combined ** Torrington Metropolitan NECTA and Litchfield LMA are combined

UNEMPLOYMENT RATES

Not Seasonally Adjusted

LABOR MARKET AREAS



HOURS AND EARNINGS

CONNECTICUT Statewide - Not Seasonally Adjusted

	Average Weekly Earnings				Average Weekly Hours				Average Hourly Earnings			
	June 2015 P	June 2014	Change over Yr.	May 2015 R	June 2015 P	June 2014	Change over Yr.	May 2015 R	June 2015 P	June 2014	Change over Yr.	May 2015 R
Private Industry All Employees	\$953.71	\$950.79	\$2.92	\$955.04	33.3	33.8	-0.5	33.3	\$28.64	\$28.13	\$0.51	\$28.68
Manufacturing*												
Production Workers	\$1,001.88	\$899.62	\$102.26	\$989.32	39.6	41.4	-1.8	39.7	\$25.30	\$21.73	\$3.57	\$24.92

* Production worker data have been impacted by the loss of a large, high-paying manufacturer from the monthly sample.

P = Preliminary R = Revised

Hours and earnings are also developed for the state's major industry sectors and Labor Market Areas. They can be found on our website at: www.ctdol.state.ct.us/lmi.

TRENDS

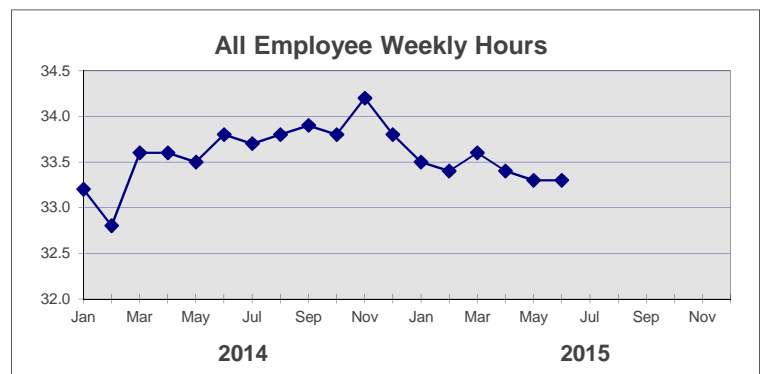
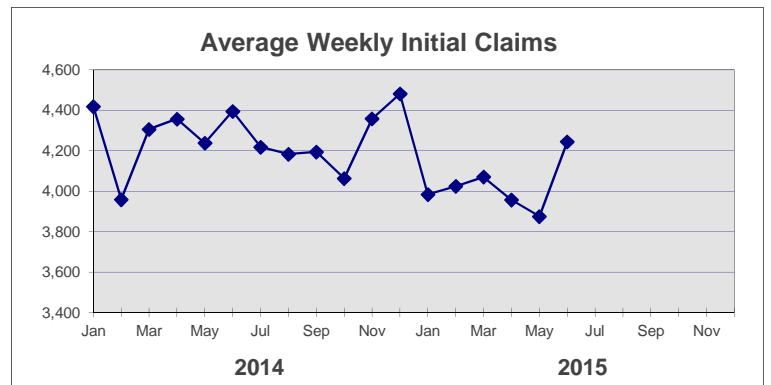
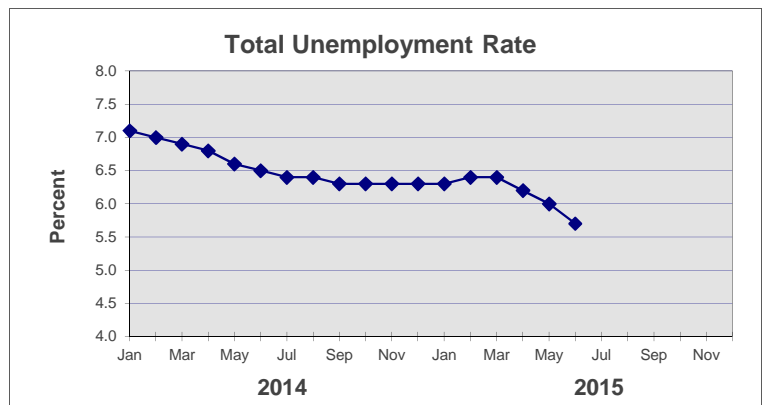
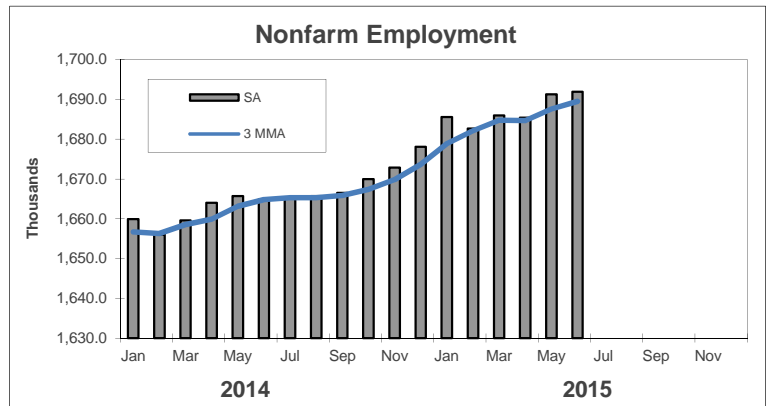
Seasonally Adjusted

	Nonfarm Employment (000s)	Total Unemployment Rate
2014		
Jan	1,659.9	7.1
Feb	1,656.1	7.0
Mar	1,659.6	6.9
Apr	1,664.0	6.8
May	1,665.7	6.6
Jun	1,664.9	6.5
Jul	1,665.4	6.4
Aug	1,665.7	6.4
Sep	1,666.5	6.3
Oct	1,670.0	6.3
Nov	1,672.9	6.3
Dec	1,678.1	6.3

2015		
Jan	1,685.6	6.3
Feb	1,682.7	6.4
Mar	1,686.0	6.4
Apr	1,685.4	6.2
May	1,691.3 R	6.0 R
Jun	1,691.9 P	5.7 P
Jul		
Aug		
Sep		
Oct		
Nov		
Dec		

	Avg Weekly Initial Claims	All Employee Weekly Hours*
2014		
Jan	4,418	33.2
Feb	3,959	32.8
Mar	4,306	33.6
Apr	4,357	33.6
May	4,238	33.5
Jun	4,395	33.8
Jul	4,218	33.7
Aug	4,183	33.8
Sep	4,194	33.9
Oct	4,063	33.8
Nov	4,358	34.2
Dec	4,481	33.8

2015		
Jan	3,984	33.5
Feb	4,024	33.4
Mar	4,070	33.6
Apr	3,956	33.4
May	3,875	33.3 R
Jun	4,244	33.3 P
Jul		
Aug		
Sep		
Oct		
Nov		
Dec		



* Not seasonally adjusted

P = Preliminary

R = Revised

** Labor-management dispute