



LABOR SITUATION

Office of Research
Sharon M. Palmer, Commissioner

FOR IMMEDIATE RELEASE

May 2015 Data
CT Unemployment Rate = 6.0%
US Unemployment Rate = 5.5%

Unemployment rate decreases to 6.0% as nonfarm jobs expand by 6,400 in May

WETHERSFIELD, June 18, 2015 – Connecticut preliminary nonfarm employment estimates from the U.S. Bureau of Labor Statistics's business survey indicate the state added 6,400 jobs (0.38%) in May 2015, seasonally adjusted. Connecticut has now increased job levels by 26,100 since May 2014 (1.57%, 2,175 jobs per month) to 1,691,800. April's original estimate of a job gain of 1,200 (0.07%) was revised 1,800 positions lower to a 600 nonfarm jobs loss (-0.04%).

The unemployment rate for Connecticut, seasonally adjusted, was calculated at 6.0% for May 2015, down two-tenths of a percentage point from the April 2015 estimate, according to the Current Population Survey (CPS) and the Local Area Unemployment Statistics (LAUS) model. The unemployment rate in the state is now down by six-tenths of a percentage point from May 2014 (6.6%). The number of unemployed citizens in the state has declined by 9,454 (-7.6%) to 115,158 since May 2014. The state's labor force increased again in May by 1,133 for the twentieth consecutive month to reach another all-time record high of 1,921,768. April's initially published statewide unemployment rate of 6.3% was revised lower to 6.2%.

"Connecticut year-to-date job gains are showing their strongest performance since the employment recovery began in 2010," said Andy Condon, Director of the Office of Research. "The state's jobless rate has fallen quickly in the last two months, even with strong labor force growth, and it appears to be converging closer to the U.S. jobless rate."

Nonfarm Jobs Detail (business establishment survey)

May preliminary nonfarm estimates show Connecticut added 6,400 jobs (0.38%), seasonally adjusted. Six of the ten major industry *supersectors* saw employment increases, while three declined, and **financial activities** came in unchanged. Over-the-year, job growth through May 2015 now totals 26,100 (1.57%), with nine of the ten major industry *supersectors* increasing employment and only the **information supersector** remaining unchanged.

Connecticut's **private sector** employers boosted nonfarm positions by 6,600 (0.46%) in May 2015, and by 24,600 (1.72%) jobs over the year. The government *supersector* posted a slight decline in May (-200, -0.08%), but is still showing small over-the-year nonfarm job gains (1,500, 0.63%).

The **trade, transportation & utilities** (3,200, 1.1%, TTU) *supersector* led all major industries in May job growth with retail trade (1,900, 1.0%) backing the increase. A new shopping outlet mall opened at a casino in the eastern part of the state mid-month, lifting the retail trade segment. The combined **construction and mining** (2,400, 4.2%) *supersector* also delivered a strong monthly increase as the building sector posted its highest job gain in 2015. The **leisure and hospitality** (1,200, 0.8%) *supersector* was also a solid gainer in May. Smaller *supersector* job gains came from the **professional and business services** (400, 0.2%), **information** (300, 1.0%), and **other services** (200, 0.3%).

Manufacturing (-1,000, -0.6%) led the three declining *supersectors* in May. Durable goods components (-1,100, -0.9%) in manufacturing were especially weak last month. The **government** (-200, -0.1%) and **education and health services** (-100, -0.03%) *supersectors* posted small declines.

The year-to-date Connecticut nonfarm job growth pace (seasonally adjusted) for the first five months of 2015 is 13,700 compared to 12,700 in the first five months of 2014. This is the best five-month year-to-date performance since the employment recovery began in February 2010. On a *not seasonally adjusted* basis, Connecticut May 2015 nonfarm employment surpassed 1.7 million (1,702,000) for the first time since November 2008 (1,701,400).

Recession recovery: Connecticut has now recovered 97,800 positions, or 82.2% of the 119,000 seasonally adjusted total nonfarm jobs that were lost in the state during the major March 2008 - February 2010 employment downturn. Connecticut's jobs recovery is now 63 months old and is averaging approximately 1,552 jobs per month since February 2010. There have been 43 monthly job gains (68.3%), 19 monthly job losses, and one unchanged month (November 2010) in the recovery timespan. The **private sector** has recovered employment at a faster pace and has now refilled 103,100 (92.4%) of the 111,600 private sector jobs that were lost during the Great Recession (a pace of about 1,637 per month). The state needs to reach the 1,713,000 job level to enter a nonfarm employment expansionary phase. This will require an additional 21,200 nonfarm jobs. A total of just 8,500 additional private sector positions are needed to have a fully recovered private sector. The **government supersector** has continued to lose positions (net -5,300) during the employment recovery period.

Labor Market Areas (LMAs): *It should be noted that due to town composition changes of greater than 4% in two of the six Bureau of Labor Statistics-recognized LMAs that went into effect at the beginning of this year, the Danbury and Waterbury LMAs are no longer seasonally adjusted by BLS.* The May 2015 preliminary nonfarm job figures indicate that two of the four major Connecticut Labor Market Areas that are officially seasonally adjusted posted job gains. The **Hartford-West Hartford-East Hartford LMA** (5,000, 0.9%) and **Norwich-New London-Westerly LMA** (1,300, 1.0%) both experienced substantial job gains last month, while the **Bridgeport-Stamford-Norwalk LMA** (-1,500, -0.4%) and **New Haven LMA** (-1,100, -0.4%) saw a small seasonally adjusted job decline. Over the year, five of the six major Connecticut BLS-recognized LMAs have produced yearly job gains, as have the three smaller state-estimated LMAs, with just the **Norwich-New London-Westerly LMA** (-300, -0.2%, seasonally adjusted) exhibiting a slight loss. The mid-month opening of a major retail outlet mall at a casino in southeastern Connecticut was a notable addition to regional job growth last month. *Note: The six major Connecticut LMAs are estimated independently (only the largest four LMAs are officially seasonally adjusted) from the statewide numbers by the BLS and cover over 90% of the nonfarm employment in the state. These estimates will not fully sum to the statewide total.*

Hours and Earnings: The **private sector** workweek, not seasonally adjusted, averaged 33.3 hours in May 2015, down two-tenths of an hour from the same month a year ago (33.5). Average hourly earnings at \$28.70, not seasonally adjusted, were up 88 cents, or 3.2%, from the May 2014 estimate. The resulting average **private sector** weekly pay was calculated at \$955.71, up \$23.74, or 2.5% higher than a year ago. The 12-month percent change in the Consumer Price Index for All Urban Consumers (CPI-U, U.S. City Average, not seasonally adjusted) in May 2015 was 0.0% (flat OTY). Information for the manufacturing production workweek and earnings can be found in the table section of this release under the "Hours and Earnings" data category. *Current all-employee private sector hours and earnings estimates can be volatile due to fluctuating sample responses.*

Labor Force Data (residential household survey)

Connecticut's unemployment rate was calculated at **6.0%** for May 2015 (seasonally adjusted). This is lower by two-tenths of a percentage point from the April 2015 figure, and down six-tenths of a percentage point from the May 2014 rate of 6.6%. The jobless rate in the state has not been this low since the August (5.9%) to September (6.1%) 2008 timeframe, almost seven years ago. Connecticut's April 2015 preliminary unemployment rate was revised slightly lower to 6.2% from the initially published 6.3% rate. The state unemployment rate continues to fall even with record labor force growth. The United States unemployment rate was 5.5% in May, up one-tenth of a percentage point from April 2015, but lower by eight-tenths of a percentage point from a year ago (6.3%).

Unemployment: Based on the Local Area Unemployment Statistics model (LAUS - a statistical model utilizing residential survey data), the number of Connecticut unemployed, seasonally adjusted, experienced a statistically significant decrease of 4,848 (-4.0%) over the month to 115,158 in May 2015. The number of unemployed state residents has dropped by 9,454 (-7.6%) since May 2014. Connecticut produced positive labor force growth (1,133, 0.1%) for the twentieth consecutive month. Connecticut's labor force is again *at new record all-time high of 1,921,768 (Available state data goes back to 1976)*. Over the year, labor force growth now measures 39,959 (2.1%, considered statistically significant) and is still holding its best annualized growth pace since the recovery began in February 2010.

The May 2015 seasonally adjusted average weekly initial unemployment claims for first-time Connecticut filers fell over the month by 81 claimants (-2.0%) to 3,875, and are down by 363 claims (-8.6%) from the May 2014 level of 4,238. This is the lowest level of seasonally adjusted average weekly initial unemployment claims measured in the state since August 2007 (3,863), before the state's employment downturn began (March 2008).

*The nonfarm employment estimate, derived from a survey of businesses, is a measure of jobs in the state; the unemployment rate and labor force estimates, are based on a household survey, and measure the work status of people who live in Connecticut. Overall, as the national and state economies recover, volatility in monthly numbers can be expected. **Job and employment estimates are best understood in the context of their movement over several months rather than observed changes in a single month's value.***

Next Connecticut Labor Situation release: Monday, July 20, 2015 (June 2015 data)

Contact: Communications Office

(860) 263-6535

06-18-15

Labor market information is available on the Internet at www.ctdol.state.ct.us/lmi
200 Folly Brook Boulevard, Wethersfield, CT 06109-1114 - www.ct.gov/dol
An Equal Opportunity/Affirmative Action Employer

NONFARM EMPLOYMENT

Jobs - by Place of Work

CONNECTICUT AND THE UNITED STATES - Seasonally Adjusted

	May 2015 P	April 2015 R	March 2015	February 2015	May 2014	Over Month Change	Over Month Rate	Over Year Change	Over Year Rate
CONNECTICUT	1,691,800	1,685,400	1,686,000	1,682,700	1,665,700	6,400	0.4%	26,100	1.6%
Total Private	1,451,900	1,445,300	1,447,400	1,444,300	1,427,300	6,600	0.5%	24,600	1.7%
Goods Producing Industries									
Mining	500	500	600	600	600	0	0.0%	-100	-16.7%
Construction	58,400	56,000	54,700	55,500	55,700	2,400	4.3%	2,700	4.8%
Manufacturing	159,900	160,900	159,700	159,300	159,600	-1,000	-0.6%	300	0.2%
Durable Goods	124,600	125,700	124,500	123,800	124,200	-1,100	-0.9%	400	0.3%
Nondurable Goods	35,300	35,200	35,200	35,500	35,400	100	0.3%	-100	-0.3%
Service Providing Industries									
Trade, Transportation & Utilities	306,800	303,600	304,900	303,300	301,100	3,200	1.1%	5,700	1.9%
Wholesale	63,100	62,800	63,000	62,700	63,300	300	0.5%	-200	-0.3%
Retail	189,400	187,500	189,200	187,900	185,200	1,900	1.0%	4,200	2.3%
Transp, Warehousing & Utilities	54,300	53,300	52,700	52,700	52,600	1,000	1.9%	1,700	3.2%
Information	32,000	31,700	31,700	31,600	32,000	300	0.9%	0	0.0%
Financial Activities	129,500	129,500	129,400	129,800	128,700	0	0.0%	800	0.6%
Finance & Insurance	109,900	109,900	109,800	110,200	109,500	0	0.0%	400	0.4%
Real Estate, Rental & Leasing	19,600	19,600	19,600	19,600	19,200	0	0.0%	400	2.1%
Professional & Business Services	215,000	214,600	217,300	216,100	212,500	400	0.2%	2,500	1.2%
Prof, Scientific & Tech Services	94,900	95,500	96,100	96,400	95,300	-600	-0.6%	-400	-0.4%
Management of Companies	30,300	30,500	30,400	30,400	30,700	-200	-0.7%	-400	-1.3%
Admn & Support & Waste Mgt Serv	89,800	88,600	90,800	89,300	86,500	1,200	1.4%	3,300	3.8%
Educational & Health Services	330,000	330,100	329,600	329,600	324,000	-100	0.0%	6,000	1.9%
Educational Services	62,800	64,000	63,700	63,800	63,100	-1,200	-1.9%	-300	-0.5%
Health Care & Social Assistance	267,200	266,100	265,900	265,800	260,900	1,100	0.4%	6,300	2.4%
Leisure and Hospitality	155,900	154,700	155,500	155,100	150,100	1,200	0.8%	5,800	3.9%
Arts, Entertainment & Recreation	29,400	27,800	28,500	28,500	26,200	1,600	5.8%	3,200	12.2%
Accommodation & Food Services	126,500	126,900	127,000	126,600	123,900	-400	-0.3%	2,600	2.1%
Other Services	63,900	63,700	64,000	63,400	63,000	200	0.3%	900	1.4%
Government**	239,900	240,100	238,600	238,400	238,400	-200	-0.1%	1,500	0.6%
UNITED STATES	141,679,000	141,399,000	141,178,000	141,059,000	138,621,000	280,000	0.2%	3,058,000	2.2%

LABOR MARKET AREAS (LMA)

Labor Market Area employment estimates are made independently of Statewide estimates.

Seasonally Adjusted data	May 2015 P	April 2015 R	March 2015	February 2015	May 2014	Over Month Change	Over Month Rate	Over Year Change	Over Year Rate
Bridgeport-Stamford-Norwalk	409,400	410,900	411,100	410,600	406,100	-1,500	-0.4%	3,300	0.8%
Hartford	576,500	571,500	571,300	570,700	563,700	5,000	0.9%	12,800	2.3%
New Haven	281,400	282,500	282,800	282,400	277,900	-1,100	-0.4%	3,500	1.3%
Norwich-New London-Westerly	127,900	126,600	127,100	127,700	128,200	1,300	1.0%	-300	-0.2%
Danbury - Not Seasonally Adjusted	79,600	78,700	78,000	77,700	78,700	900	1.1%	900	1.1%
Waterbury - Not Seasonally Adjusted	69,000	67,800	67,200	66,800	67,800	1,200	1.8%	1,200	1.8%
<i>Not Seasonally Adjusted data (Non-Classified Areas, State estimated not BLS)</i>									
Enfield	45,700	46,100	44,700	44,600	45,100	-400	-0.9%	600	1.3%
Torrington-Northwest	34,600	33,800	32,700	32,700	34,200	800	2.4%	400	1.2%
Danielson-Northeast	27,800	27,600	27,200	26,900	27,500	200	0.7%	300	1.1%

* Less than 0.05% ** Includes Native American tribal government employment

P = Preliminary

R = Revised

Starting with March, 2011, our monthly statewide and major LMA nonfarm job estimates have been taken over by the US Department of Labor Bureau of Labor Statistics. This is the final phase of transition in this program, which began in 2008. As a result of changes in the estimation procedures, you are likely to see more variability in month-to-month estimates of job counts. Caution should be used in interpreting any single month's estimate. The data are best interpreted to identify trends and cycles over several months and quarters. If you have any questions about these changes, please email us at: dol.imi@ct.gov. Danbury and Waterbury LMA's are now not seasonally adjusted.

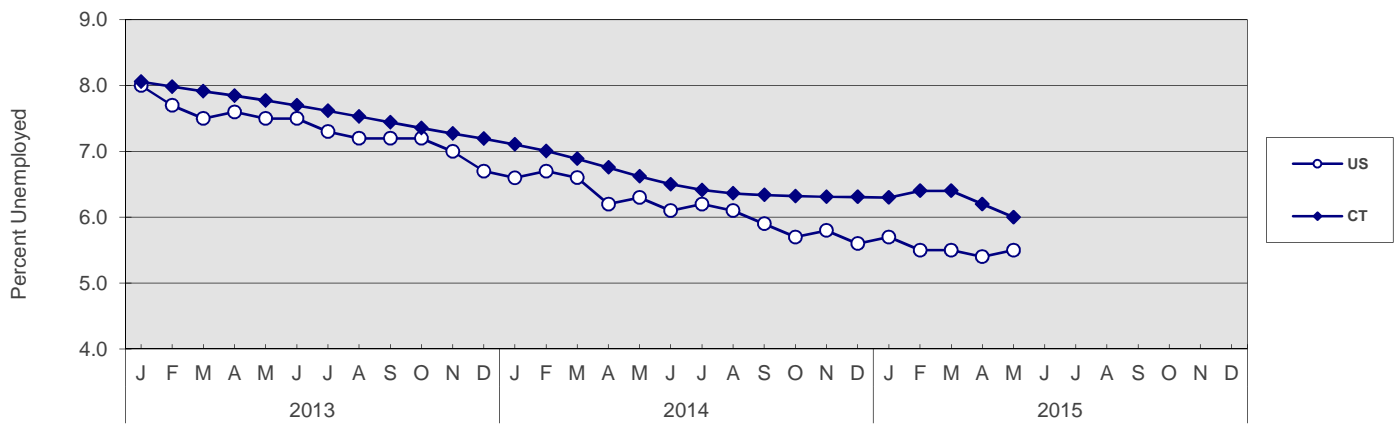
UNEMPLOYMENT

Persons Unemployed - by Place of Residence

CONNECTICUT AND THE UNITED STATES - Seasonally Adjusted

	May 2015 P		May 2014 R		Change		Apr. 2015 R	
	Number	Rate	Number	Rate	Number	Points	Number	Rate
CONNECTICUT								
Unemployed	115,200	6.0	124,600	6.6	-9,400	-0.6	120,000	6.2
Labor Force	1,921,800		1,881,800		40,000		1,920,600	
UNITED STATES								
Unemployed	8,674,000	5.5	9,761,000	6.3	-1,087,000	-0.8	8,549,000	5.4
Labor Force	157,469,000		155,629,000		1,840,000		157,072,000	

U.S. AND CONNECTICUT UNEMPLOYMENT RATES - Seasonally Adjusted 2013 - 2015



LABOR MARKET AREAS - Not Seasonally Adjusted

	May 2015 P		May 2014 R		Change		Apr. 2015 R	
	Number	Rate	Number	Rate	Number	Points	Number	Rate
Bridgeport-Stamford								
Danbury								
Danielson-Norwalk								
Worcester NECTA								
Hampton LMA								
Enfield								
Hartford								
New Haven								
Norwich-New Britain								
Torrington-Norwalk								
Torrington N. Litchfield								
Waterbury								
CONNECTICUT	106,600	5.6	124,500	6.6	-17,900	-1.0	110,500	5.8
UNITED STATES	8,370,000	5.3	9,443,000	6.1	-1,073,000	-0.8	7,966,000	5.1

Release of the May 2015 sub-state labor force data is restricted by the U.S. Bureau of Labor Statistics until Friday, June 19, 2015. An updated *Connecticut Labor Situation* with these data will be available on our website at that time at:
<http://www1.ctdol.state.ct.us/lmi/laborsit.pdf>

P = Preliminary

R = Revised

Labor force data included in this publication are developed in cooperation with the U.S. Department of Labor, Bureau of Labor Statistics.

* Worcester NECTA, CT part and Hampton LMA are combined ** Torrington Metropolitan NECTA and Litchfield LMA are combined

UNEMPLOYMENT RATES

Not Seasonally Adjusted

Release of the May 2015 sub-state labor force data is restricted by the U.S. Bureau of Labor Statistics until Friday, June 19, 2015. An updated *Connecticut Labor Situation* with these data will be available on our website at that time at:
<http://www1.ctdol.state.ct.us/lmi/laborsit.pdf>.

HOURS AND EARNINGS

CONNECTICUT Statewide - Not Seasonally Adjusted

	Average Weekly Earnings				Average Weekly Hours				Average Hourly Earnings			
	May 2015 P	May 2014	Change over Yr.	Apr. 2015 R	May 2015 P	May 2014	Change over Yr.	Apr. 2015 R	May 2015 P	May 2014	Change over Yr.	Apr. 2015 R
Private Industry All Employees	\$955.71	\$931.97	\$23.74	\$959.58	33.3	33.5	-0.2	33.4	\$28.70	\$27.82	\$0.88	\$28.73
Manufacturing*												
Production Workers	\$990.79	\$878.30	\$112.49	\$1,020.95	39.6	40.4	-0.8	40.1	\$25.02	\$21.74	\$3.28	\$25.46

* Production worker data have been impacted by the loss of a large, high-paying manufacturer from the monthly sample.

P = Preliminary

R = Revised

Hours and earnings are also developed for the state's major industry sectors and Labor Market Areas. They can be found on our website at: www.ctdol.state.ct.us/lmi.

TRENDS

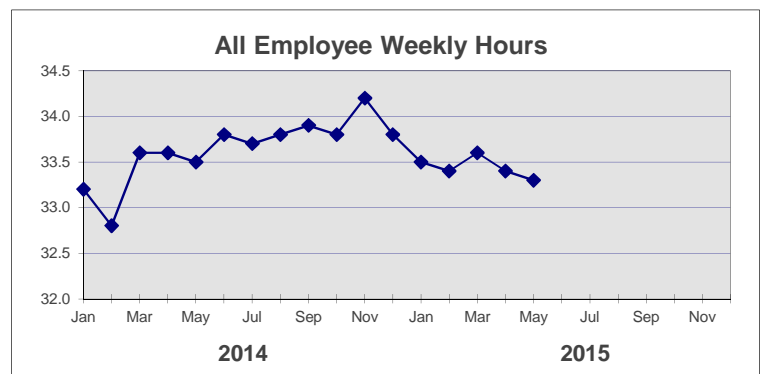
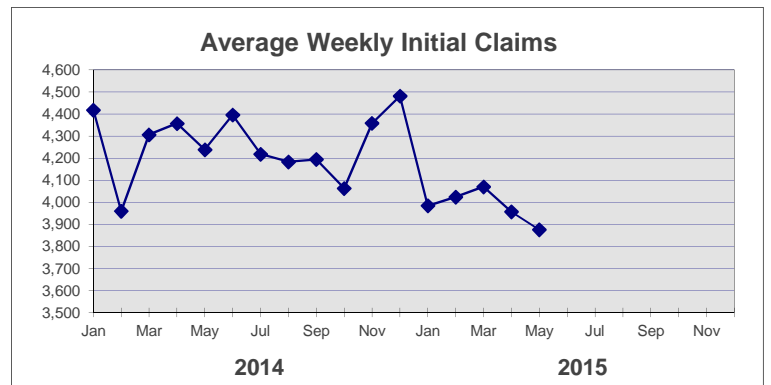
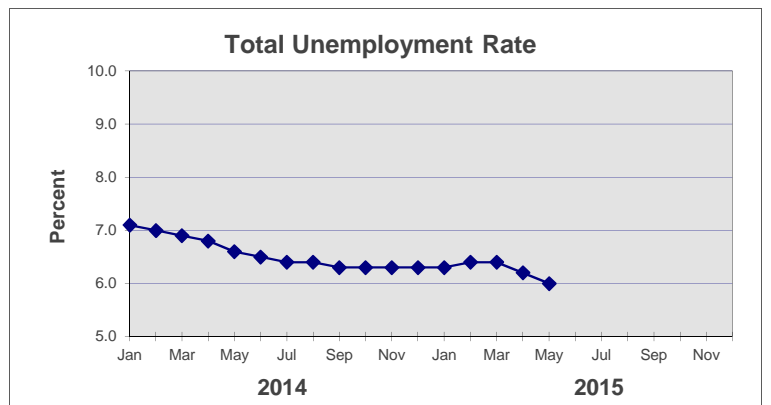
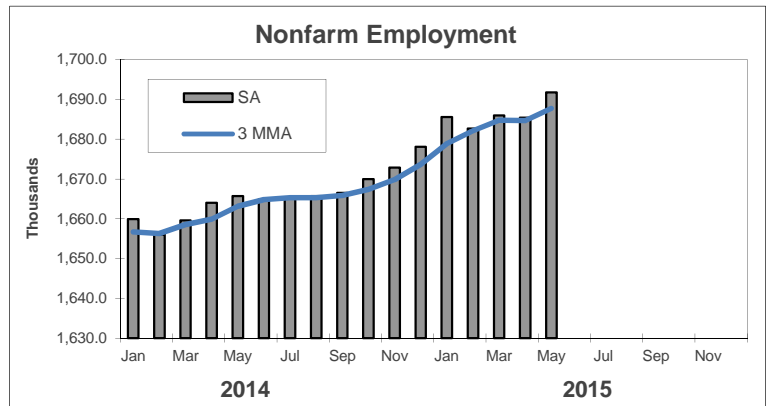
Seasonally Adjusted

	Nonfarm Employment (000s)	Total Unemployment Rate
2014		
Jan	1,659.9	7.1
Feb	1,656.1	7.0
Mar	1,659.6	6.9
Apr	1,664.0	6.8
May	1,665.7	6.6
Jun	1,664.9	6.5
Jul	1,665.4	6.4
Aug	1,665.7	6.4
Sep	1,666.5	6.3
Oct	1,670.0	6.3
Nov	1,672.9	6.3
Dec	1,678.1	6.3

2015		
Jan	1,685.6	6.3
Feb	1,682.7	6.4
Mar	1,686.0	6.4
Apr	1,685.4 R	6.2 R
May	1,691.8 P	6.0 P
Jun		
Jul		
Aug		
Sep		
Oct		
Nov		
Dec		

	Avg Weekly Initial Claims	All Employee Weekly Hours*
2014		
Jan	4,418	33.2
Feb	3,959	32.8
Mar	4,306	33.6
Apr	4,357	33.6
May	4,238	33.5
Jun	4,395	33.8
Jul	4,218	33.7
Aug	4,183	33.8
Sep	4,194	33.9
Oct	4,063	33.8
Nov	4,358	34.2
Dec	4,481	33.8

2015		
Jan	3,984	33.5
Feb	4,024	33.4
Mar	4,070	33.6
Apr	3,956	33.4 R
May	3,875	33.3 P
Jun		
Jul		
Aug		
Sep		
Oct		
Nov		
Dec		



* Not seasonally adjusted

P = Preliminary

R = Revised

** Labor-management dispute