



LABOR SITUATION

Office of Research
Sharon M. Palmer, Commissioner

FOR IMMEDIATE RELEASE

April 2015 Data
CT Unemployment Rate = 6.3%
US Unemployment Rate = 5.4%

Unemployment rate falls to 6.3% as nonfarm jobs grow by 1,200 in April

WETHERSFIELD, May 26, 2015 – Preliminary nonfarm employment estimates from the U.S. Bureau of Labor Statistics (BLS establishment survey) show Connecticut added 1,200 jobs (0.07%) to state payrolls in April 2015 - seasonally adjusted. Connecticut has now increased job levels by 23,200 since April 2014 (1.39%, 1,933 jobs per month) to 1,687,200. March's initially estimated job increase of 4,000 (0.24%) was revised slightly lower by 700 positions to a 3,300 job gain (0.20%). This is the third monthly employment increase in 2015 and the tenth monthly job gain in the last twelve months.

The seasonally adjusted unemployment rate for Connecticut was measured at 6.3% for April 2015, down one-tenth of a percentage point from the March 2015 estimate, based on the Current Population Survey (CPS) and the Local Area Unemployment Statistics (LAUS) model. The jobless rate in the state is now down by five-tenths of a percentage point from April 2014 (6.8%). The number of unemployed residents in the state has declined by 7,019 (-5.5%) to 120,089 over the year. The state's labor force expanded briskly again in April by 4,988 participants for the nineteenth consecutive month to reach an all-time record high labor pool of 1,920,837.

"This was a relatively quiet month in the job market with mixed results across the state's major industry sectors," said Andy Condon, Director of the Office of Research. "Continuing job growth combined with improving wages appears to be attracting more job seekers into the labor market."

Nonfarm Jobs Detail (business establishment survey)

Preliminary April nonfarm estimates indicate Connecticut added 1,200 jobs (0.07%), seasonally adjusted. Four of the ten major industry *supersectors* contributed to the monthly increase in nonfarm employment, while three declined, and three came in unchanged. Annualized job growth through April 2015 now totals 23,200 (1.39%), with nine of the ten major industry *supersectors* supporting the increase.

The **private sector** lost 300 (-0.02%) positions in April 2015, although Connecticut private sector firms have increased employment by 21,300 (1.49%) jobs over the year. A solid government *supersector* gain in April (1,500, 0.63%) offset the overall private sector job decline last month, setting up the total nonfarm increase.

Four of the ten major industry *supersectors* added jobs in April and just three declined. **Financial activities, other services**, and **information** came in unchanged. **Government** (1,500, 0.6%) led all industry *supersectors* in April, with local government (1,400, 0.9%) entities providing the majority of the increase. **Manufacturing** (1,400, 0.9%) also posted a good-sized monthly increase in April with the durable goods components (1,200, 1.0%) being the strongest performer. The combined **construction and mining** (1,300, 2.4%) *supersector* experienced healthy April gains as well in a potentially good sign for the home building sector. **Education and health services** (200, 0.1%) showed a small gain primarily driven by private educational services (400, 0.6%).

Professional and business services (-2,100, -1.0%) was the largest major industry *supersector* job decliner in April. The entire seasonally adjusted employment decline in this *supersector* came about from subdued spring hiring in administrative and support services (-2,200, -2.4%) which includes temporary help services. Perhaps affected by unusually cooler weather, the **leisure and hospitality** (-700, -0.5%) *supersector* was also lower in April. The arts, entertainment, and recreation (-500, -1.8%) segment and the accommodation and food services (-200, -0.2%) component were both down. The **trade, transportation & utilities** (-400, -0.1%) *supersector* also posted a slight decline last month. Retail trade (-1,500, -0.8%) was a major contributor to the loss while wholesale trade (100, 0.2%) and transportation and utilities (1,000, 1.9%) did improve. Easter occurred in early April this year (the

fifth compared to the twentieth last year) and as a result retail trade, restaurants, accommodations, and temporary hiring may have experienced some slightly different seasonal trend movements this year.

Year-to-date, Connecticut nonfarm jobs have grown by a seasonally adjusted 9,100. This compares to 11,000 in the first four months of 2014, 7,000 for the same timeframe in 2013, 5,000 for 2012, 10,500 for 2011, and -5,400 for 2010, the year the employment recovery started in the state.

Recession recovery: Connecticut has now recovered 93,200 positions, or 78.3% of the 119,000 seasonally adjusted total nonfarm jobs that were lost in the state during the March 2008 - February 2010 employment recession. Connecticut's jobs recovery is now 62 months old and is averaging approximately 1,503 jobs per month since February 2010. There have been 43 monthly job gains (69.4%), 18 monthly job losses, and one unchanged month (November 2010) in the recovery timespan. The **private sector** has recovered employment at a better pace and has now replenished 98,300 (88.1%) of the 111,600 private sector jobs that were lost during the downturn (a pace of about 1,585 per month). The state needs to reach the 1,713,000 level to reach a clear nonfarm employment recovery. This will require an additional 25,800 nonfarm jobs. A total of just 13,300 additional private sector positions are needed to have a fully recovered private sector. The **government supersector** has continued to lose jobs (net -5,100) even during the nonfarm employment recovery period.

Labor Market Areas (LMAs): *It should be noted that due to town composition changes of greater than 4% in two of the six Bureau of Labor Statistics-recognized LMAs that went into effect at the beginning of this year, the Danbury and Waterbury LMAs are no longer seasonally adjusted by BLS.* The April 2015 preliminary nonfarm job figures indicate that just one of the four major Connecticut Labor Market Areas that are officially seasonally adjusted, posted job gains. The **Norwich-New London-Westerly LMA** (-500, -0.4%), **New Haven LMA** (-300, -0.1%), and the **Hartford-West Hartford-East Hartford LMA** (-100, -0.02%) all experienced small job losses last month, while the **Bridgeport-Stamford-Norwalk LMA** (400, 0.1%) produced a small seasonally adjusted monthly job gain. Since April 2014, five of the six major Connecticut BLS-recognized LMAs have produced yearly job gains, as have the three smaller state-estimated LMAs, with just the **Norwich-New London-Westerly LMA** (-1,700, -1.3%, seasonally adjusted) lower. *Note: The six major Connecticut LMAs are estimated and seasonally adjusted independently (only the largest four LMAs are officially seasonally adjusted) from the statewide numbers by the BLS and cover over 90% of the nonfarm employment in the state. These estimates will not fully sum to the statewide total.*

Hours and Earnings: The **private sector** workweek, not seasonally adjusted, averaged 33.5 hours in April 2015, down one-tenth of an hour from the same month a year ago (33.6). Average hourly earnings at \$28.73, not seasonally adjusted, were up 75 cents, or 2.7%, from the April 2014 estimate. The resultant average **private sector** weekly pay was calculated at \$962.46, up \$22.33, or 2.4% higher than a year ago. The 12-month percent change in the Consumer Price Index for All Urban Consumers (CPI-U, U.S. City Average, not seasonally adjusted) in April 2015 was -0.2% (still deflating). Information for the manufacturing production workweek and earnings can be found in the table section of this release under the "Hours and Earnings" data category. *Current all-employee private sector hours and earnings estimates can be volatile due to fluctuating sample responses.*

Labor Force Data (residential household survey)

Connecticut's unemployment rate was calculated at **6.3%** for April 2015 (seasonally adjusted). This is lower by one-tenth of a percentage point from the March 2015 figure, and down five-tenths of a percentage point from the April 2014 rate of 6.8%. The United States unemployment rate was 5.4% in April, also down one-tenth of a percentage point from March 2015, and lower by eight-tenths of a percentage point from a year ago (6.2%).

Unemployment: Based on the Local Area Unemployment Statistics model (LAUS - a complex statistical model utilizing residential survey data), the number of Connecticut unemployed, seasonally adjusted, underwent a sizeable decrease of 1,786 (-1.5%) over the month to 120,089 in April 2015. The number of unemployed state residents has dropped by 7,019 (-5.5%) since April 2014. The state posted another strong month of labor force growth (4,988, 0.3%) which has continued for nineteen consecutive months. Connecticut's labor force is now at *new record all-time high of 1,920,837!* (Available state data goes back to 1976). Over the year, labor force growth now measures 39,836 (2.1%, considered statistically significant) and is also at its best annualized growth pace

since the recovery began in February 2010. The residential employment component was also strong (6,774, 0.4%) over the month as well, breaking 1.8 million (1,800,748) for the first time ever.

The seasonally adjusted April 2015 average weekly initial unemployment claims for first-time Connecticut filers decreased over the month by 114 claimants (-2.8%) to 3,956, and are lower by 401 claims (-9.2%) from the April 2014 level of 4,357.

*The nonfarm employment estimate, derived from a survey of businesses, is a measure of jobs in the state; the unemployment rate and labor force estimates, are based on a household survey, and measure the work status of people who live in Connecticut. Overall, as the national and state economies recover, volatility in monthly numbers can be expected. **Job and employment estimates are best understood in the context of their movement over several months rather than observed changes in a single month's value.***

Next Connecticut Labor Situation release: Tuesday, June 18, 2015 (May 2015 data)

Contact: Communications Office

(860) 263-6535

05-26-15

Labor market information is available on the Internet at www.ctdol.state.ct.us/lmi
200 Folly Brook Boulevard, Wethersfield, CT 06109-1114 - www.ct.gov/dol
An Equal Opportunity/Affirmative Action Employer

NONFARM EMPLOYMENT

Jobs - by Place of Work

CONNECTICUT AND THE UNITED STATES - Seasonally Adjusted

	April 2015 P	March 2015 R	February 2015	January 2015	April 2014	Over Month Change	Over Month Rate	Over Year Change	Over Year Rate
CONNECTICUT	1,687,200	1,686,000	1,682,700	1,685,600	1,664,000	1,200	0.1%	23,200	1.4%
Total Private	1,447,100	1,447,400	1,444,300	1,447,000	1,425,800	-300	0.0%	21,300	1.5%
Goods Producing Industries									
Mining	500	600	600	600	500	-100	-16.7%	0	0.0%
Construction	56,100	54,700	55,500	55,800	55,500	1,400	2.6%	600	1.1%
Manufacturing	161,100	159,700	159,300	159,000	160,200	1,400	0.9%	900	0.6%
Durable Goods	125,700	124,500	123,800	124,100	124,800	1,200	1.0%	900	0.7%
Nondurable Goods	35,400	35,200	35,500	34,900	35,400	200	0.6%	0	0.0%
Service Providing Industries									
Trade, Transportation & Utilities	304,500	304,900	303,300	301,800	301,300	-400	-0.1%	3,200	1.1%
Wholesale	63,100	63,000	62,700	62,700	63,200	100	0.2%	-100	-0.2%
Retail	187,700	189,200	187,900	186,100	185,800	-1,500	-0.8%	1,900	1.0%
Transp, Warehousing & Utilities	53,700	52,700	52,700	53,000	52,300	1,000	1.9%	1,400	2.7%
Information	31,700	31,700	31,600	31,400	32,100	0	0.0%	-400	-1.2%
Financial Activities	129,400	129,400	129,800	129,900	128,400	0	0.0%	1,000	0.8%
Finance & Insurance	109,900	109,800	110,200	110,300	109,300	100	0.1%	600	0.5%
Real Estate, Rental & Leasing	19,500	19,600	19,600	19,600	19,100	-100	-0.5%	400	2.1%
Professional & Business Services	215,200	217,300	216,100	216,900	211,100	-2,100	-1.0%	4,100	1.9%
Prof, Scientific & Tech Services	96,100	96,100	96,400	96,400	94,900	0	0.0%	1,200	1.3%
Management of Companies	30,500	30,400	30,400	30,300	30,600	100	0.3%	-100	-0.3%
Admn & Support & Waste Mgt Serv	88,600	90,800	89,300	90,200	85,600	-2,200	-2.4%	3,000	3.5%
Educational & Health Services	329,800	329,600	329,600	331,500	323,300	200	0.1%	6,500	2.0%
Educational Services	64,100	63,700	63,800	66,100	63,000	400	0.6%	1,100	1.7%
Health Care & Social Assistance	265,700	265,900	265,800	265,400	260,300	-200	-0.1%	5,400	2.1%
Leisure and Hospitality	154,800	155,500	155,100	156,800	150,500	-700	-0.5%	4,300	2.9%
Arts, Entertainment & Recreation	28,000	28,500	28,500	28,100	26,200	-500	-1.8%	1,800	6.9%
Accommodation & Food Services	126,800	127,000	126,600	128,700	124,300	-200	-0.2%	2,500	2.0%
Other Services	64,000	64,000	63,400	63,300	62,900	0	0.0%	1,100	1.7%
Government**	240,100	238,600	238,400	238,600	238,200	1,500	0.6%	1,900	0.8%
UNITED STATES	141,367,000	141,144,000	141,059,000	140,793,000	138,385,000	223,000	0.2%	2,982,000	2.2%

LABOR MARKET AREAS (LMA)

Labor Market Area employment estimates are made independently of Statewide estimates.

Seasonally Adjusted data	April 2015 P	March 2015 R	February 2015	January 2015	April 2014	Over Month Change	Over Month Rate	Over Year Change	Over Year Rate
Bridgeport-Stamford-Norwalk	411,500	411,100	410,600	410,900	405,500	400	0.1%	6,000	1.5%
Hartford	571,200	571,300	570,700	571,100	563,000	-100	0.0%	8,200	1.5%
New Haven	282,500	282,800	282,400	281,400	277,800	-300	-0.1%	4,700	1.7%
Norwich-New London-Westerly	126,600	127,100	127,700	128,000	128,300	-500	-0.4%	-1,700	-1.3%
Danbury - Not Seasonally Adjusted	78,700	78,000	77,700	78,300	77,900	700	0.9%	800	1.0%
Waterbury - Not Seasonally Adjusted	67,900	67,200	66,800	67,200	67,000	700	1.0%	900	1.3%
<i>Not Seasonally Adjusted data (Non-Classified Areas, State estimated not BLS)</i>									
Enfield	45,900	44,700	44,600	44,700	45,500	1,200	2.7%	400	0.9%
Torrington-Northwest	33,600	32,700	32,700	33,000	33,400	900	2.8%	200	0.6%
Danielson-Northeast	27,500	27,200	26,900	27,200	27,300	300	1.1%	200	0.7%

* Less than 0.05% ** Includes Native American tribal government employment

P = Preliminary

R = Revised

Starting with March, 2011, our monthly statewide and major LMA nonfarm job estimates have been taken over by the US Department of Labor Bureau of Labor Statistics. This is the final phase of transition in this program, which began in 2008. As a result of changes in the estimation procedures, you are likely to see more variability in month-to-month estimates of job counts. Caution should be used in interpreting any single month's estimate. The data are best interpreted to identify trends and cycles over several months and quarters. If you have any questions about these changes, please email us at: dol.lmi@ct.gov. Danbury and Waterbury LMA's are now not seasonally adjusted.

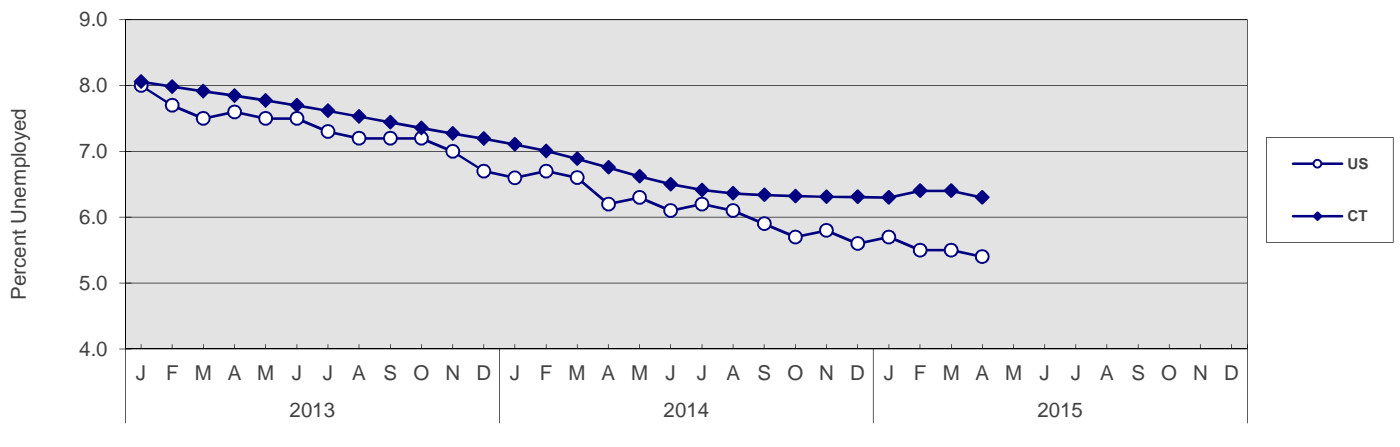
UNEMPLOYMENT

Persons Unemployed - by Place of Residence

CONNECTICUT AND THE UNITED STATES - Seasonally Adjusted

	Apr. 2015 P Number	Rate	Apr. 2014 R Number	Rate	Change Number	Points	Mar. 2015 R Number	Rate
CONNECTICUT								
Unemployed	120,100	6.3	127,100	6.8	-7,000	-0.5	121,900	6.4
Labor Force	1,920,800		1,881,000		39,800		1,915,800	
UNITED STATES								
Unemployed	8,549,000	5.4	9,696,000	6.2	-1,147,000	-0.8	8,575,000	5.5
Labor Force	157,072,000		155,420,000		1,652,000		156,906,000	

U.S. AND CONNECTICUT UNEMPLOYMENT RATES - Seasonally Adjusted 2013 - 2015



LABOR MARKET AREAS - Not Seasonally Adjusted

	Apr. 2015 P Number	Rate	Apr. 2014 R Number	Rate	Change Number	Points	Mar. 2015 R Number	Rate
Bridgeport-Stamford	26,100	5.6	28,500	6.3	-2,400	-0.7	29,400	6.3
Danbury	5,000	4.7	5,400	5.1	-400	-0.4	5,700	5.3
Danielson-Northeast*	2,800	6.3	3,100	7.2	-300	-0.9	3,200	7.3
Worcester NECTA	2,700	6.4	3,000	7.3	-300	-0.9	3,100	7.4
Hampton	100	4.7	100	5.9	0	-1.2	100	5.7
Enfield	2,600	5.3	2,900	5.9	-300	-0.6	3,100	6.2
Hartford	36,300	5.8	39,500	6.5	-3,200	-0.7	40,500	6.5
New Haven	18,900	5.8	21,200	6.6	-2,300	-0.8	20,900	6.4
Norwich-New London	9,100	6.4	9,800	6.9	-700	-0.5	10,100	7.2
Torrington-Northwest**	2,600	5.5	2,900	6.2	-300	-0.7	3,200	6.7
Torrington NECTA	1,700	6.4	1,900	7.2	-200	-0.8	2,100	7.6
Litchfield	900	4.3	1,000	4.8	-100	-0.5	1,100	5.4
Waterbury	8,200	7.3	9,100	8.2	-900	-0.9	9,300	8.2
CONNECTICUT	110,700	5.8	120,800	6.5	-10,100	-0.7	124,100	6.5
UNITED STATES	7,966,000	5.1	9,079,000	5.9	-1,113,000	-0.8	8,682,000	5.6

P = Preliminary

R = Revised

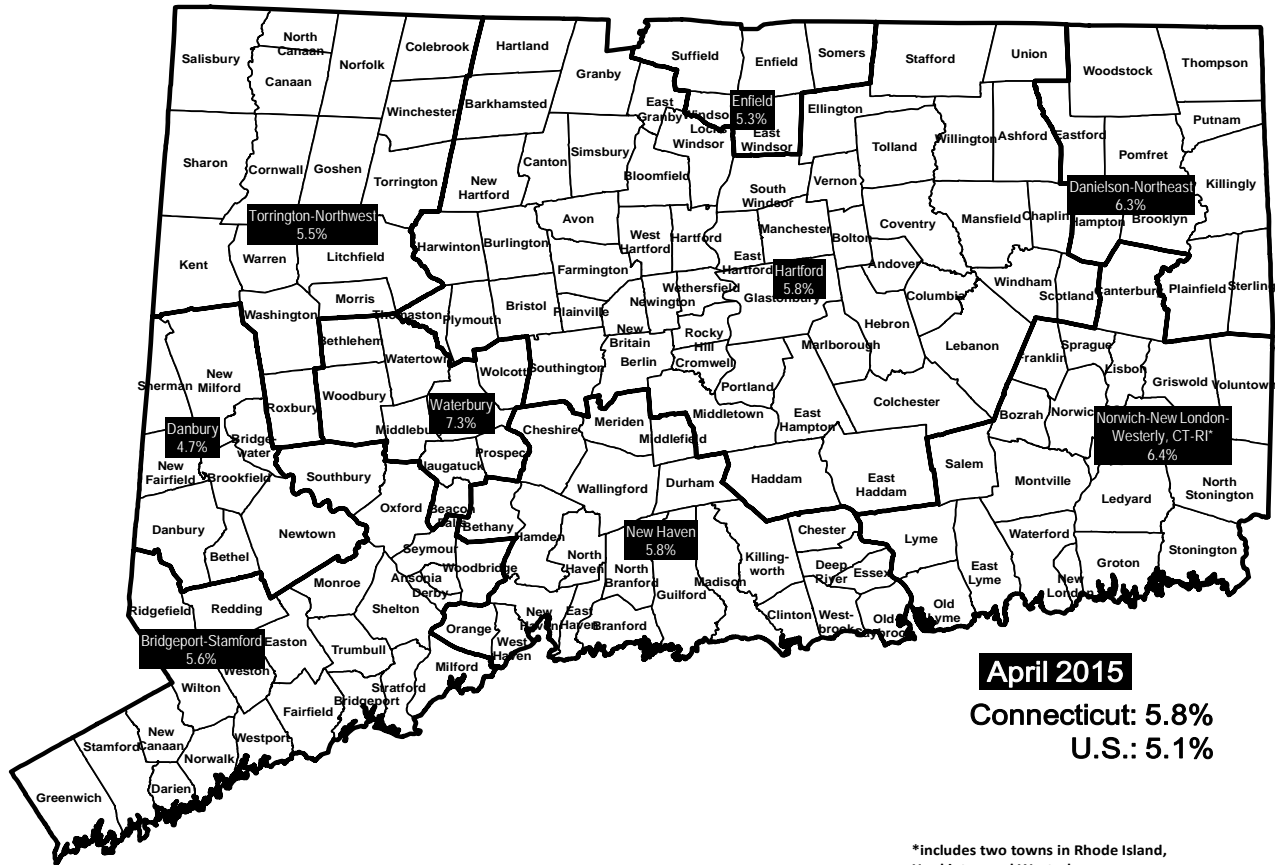
Labor force data included in this publication are developed in cooperation with the U.S. Department of Labor, Bureau of Labor Statistics.

* Worcester NECTA, CT part and Hampton LMA are combined ** Torrington Metropolitan NECTA and Litchfield LMA are combined

UNEMPLOYMENT RATES

Not Seasonally Adjusted

LABOR MARKET AREAS



HOURS AND EARNINGS

CONNECTICUT Statewide - Not Seasonally Adjusted

	Average Weekly Earnings				Average Weekly Hours				Average Hourly Earnings			
	Apr. 2015 P	Apr. 2014	Change over Yr.	Mar. 2015 R	Apr. 2015 P	Apr. 2014	Change over Yr.	Mar. 2015 R	Apr. 2015 P	Apr. 2014	Change over Yr.	Mar. 2015 R
Private Industry All Employees	\$962.46	\$940.13	\$22.33	\$975.41	33.5	33.6	-0.1	33.6	\$28.73	\$27.98	\$0.75	\$29.03
Manufacturing*												
Production Workers	\$1,020.55	\$876.40	\$144.15	\$1,023.20	40.1	40.0	0.1	40.7	\$25.45	\$21.91	\$3.54	\$25.14

* Production worker data have been impacted by the loss of a large, high-paying manufacturer from the monthly sample.

P = Preliminary R = Revised

Hours and earnings are also developed for the state's major industry sectors and Labor Market Areas. They can be found on our website at: www.ctdol.state.ct.us/lmi.

TRENDS

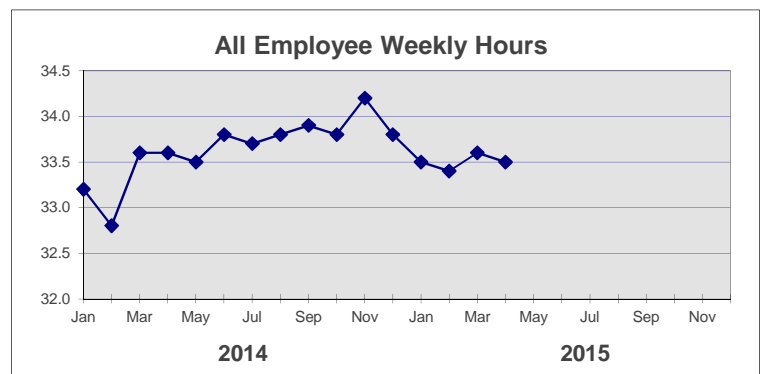
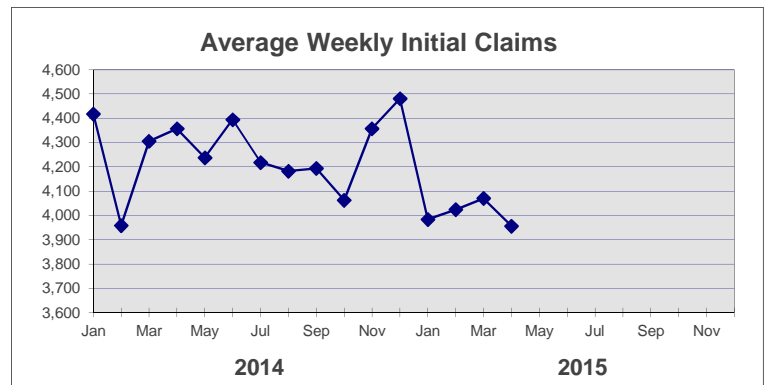
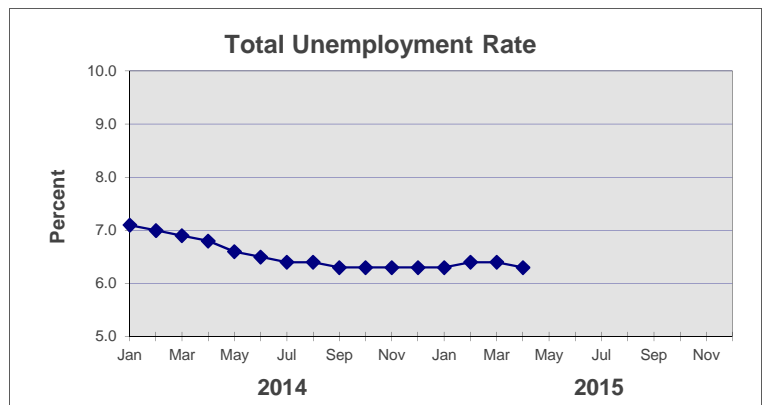
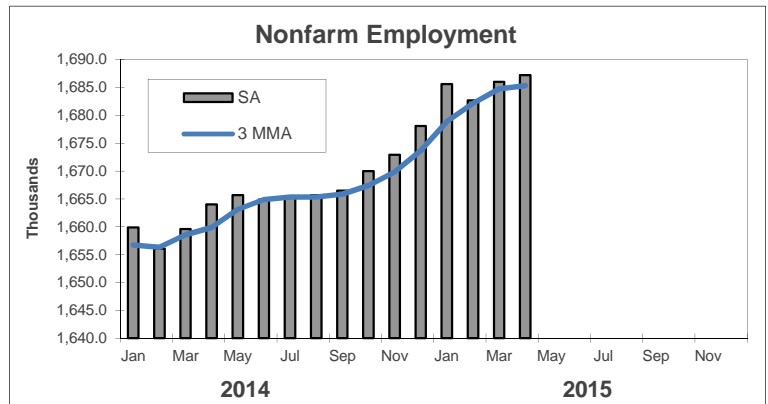
Seasonally Adjusted

	Nonfarm Employment (000s)	Total Unemployment Rate
2014		
Jan	1,659.9	7.1
Feb	1,656.1	7.0
Mar	1,659.6	6.9
Apr	1,664.0	6.8
May	1,665.7	6.6
Jun	1,664.9	6.5
Jul	1,665.4	6.4
Aug	1,665.7	6.4
Sep	1,666.5	6.3
Oct	1,670.0	6.3
Nov	1,672.9	6.3
Dec	1,678.1	6.3

2015		
Jan	1,685.6	6.3
Feb	1,682.7	6.4
Mar	1,686.0 R	6.4 R
Apr	1,687.2 P	6.3 P
May		
Jun		
Jul		
Aug		
Sep		
Oct		
Nov		
Dec		

	Avg Weekly Initial Claims	All Employee Weekly Hours*
2014		
Jan	4,418	33.2
Feb	3,959	32.8
Mar	4,306	33.6
Apr	4,357	33.6
May	4,238	33.5
Jun	4,395	33.8
Jul	4,218	33.7
Aug	4,183	33.8
Sep	4,194	33.9
Oct	4,063	33.8
Nov	4,358	34.2
Dec	4,481	33.8

2015		
Jan	3,984	33.5
Feb	4,024	33.4
Mar	4,070	33.6 R
Apr	3,956	33.5 P
May		
Jun		
Jul		
Aug		
Sep		
Oct		
Nov		
Dec		



* Not seasonally adjusted

P = Preliminary

R = Revised

** Labor-management dispute