



LABOR SITUATION

Office of Research
Sharon M. Palmer, Commissioner

FOR IMMEDIATE RELEASE

March 2015 Data
CT Unemployment Rate = 6.4%
US Unemployment Rate = 5.5%

Jobs rebound in March (4,000); unemployment rate remains at 6.4%

WETHERSFIELD, April 20, 2015 – Preliminary estimates of Connecticut nonfarm payrolls by the U.S. Bureau of Labor Statistics (BLS establishment survey) indicate Connecticut gained 4,000 nonfarm jobs (0.24%) in March 2015, seasonally adjusted. Connecticut has now added 27,100 jobs over the year (1.63%, 2,258 jobs per month). February's original estimate of a 3,700 (-0.22%) decline was revised up 800 to a 2,900 job loss (-0.17%). Seasonally adjusted year-to-date employment growth in the first quarter of 2015 was estimated at 8,600, compared to 6,600 jobs over the same period in 2014.

Connecticut's unemployment rate was calculated at 6.4% in March 2015, seasonally adjusted, unchanged from the February figure, according to in-state responses collected and modeled from the Current Population Survey. Since March 2014, the jobless rate is down by five-tenths of a percentage point in the state. The number of unemployed residents in the state has declined by 7,599 (-5.9%) to 121,896 over the year. The state's labor force grew last month by 6,129 for its largest increase so far in 2015.

"As we entered spring, job growth at this point in the recovery seems to be coming from a broader base of the state's industries," said Andy Condon, Director of the Office of Research. "Eight of ten major industry *supersectors* added jobs in March and over the year. We continue to see increased labor force participation as the economy improves."

Nonfarm Jobs Detail (business establishment survey)

March preliminary nonfarm estimates show Connecticut added 4,000 (0.24%) jobs - seasonally adjusted. Eight of the ten major industry *supersectors* exhibited increases in employment, while just two declined. The statewide annualized job gains through March 2015 now total 27,100 (1.63%).

The **private sector** in March 2015 gained 3,700 (0.26%) jobs over the month and 26,100 (1.84%) jobs since March 2014. The **government** *supersector* also posted a slight increase in March (300, 0.13%) making up for its small February decline (-200,-0.08%, employment on Indian reservations including casinos is counted in local government). Employment gains for government entities since March 2014 are just 1,000 (0.42%).

Eight of the ten major industry *supersectors* grew jobs in March while only two declined in a bounce back from February's frigid decline. Improving *supersectors* were led by **trade, transportation & utilities** (1,500, 0.5%) with retail trade (1,300, 0.7%) and wholesale trade (200, 0.3%) both positive, while transportation and utilities was unchanged. The **leisure and hospitality** (1,000, 0.6%) *supersector* recovered much of its February losses (-1,700) with accommodation and food services (800, 0.6%) resuming solid increases. **Professional and business services** (900, 0.4%) also restored jobs lost in February (-800) with employment services being the strongest segment in this *supersector*. Smaller gains of 500 or less were experienced by the **other services** (500, 0.8%), **information** (400, 1.3%), **manufacturing** (400, 0.3%), **government** (300, 0.1%), and **education and health services** (200, 0.1%) industry *supersectors*. **Education and health services** (7,400, 2.3%) still remains the largest job-growing industry *supersector* over the year in magnitude, while **leisure and hospitality** (5,400, 3.6%) and **professional and business services** (7,100, 3.4%) vie for fastest job growth in annualized percentage terms.

The combined **construction and mining** (-800, -1.4%) *supersector* led the two declining industries in March likely because moderate snow still covered the state during the survey week (the week that includes the 12th day each month). The **financial activities** (-400, -0.3%) *supersector* also saw a decline. Among Connecticut's ten major industry *supersectors*, only the **manufacturing** (-600, -0.4%) and **information** (-100,-0.3%) industry *supersectors* are posting employment declines over the year.

The state's total nonfarm employment, currently at 1,686,700 for March 2015 - seasonally adjusted, has exceeded the three-month moving average of nonfarm employment for 13 consecutive months (see page 7). This is the longest stretch for current monthly nonfarm employment outperforming the three-month moving average since the employment recovery began in February 2010. Year-to-date Connecticut nonfarm job growth pace for the three months of the first quarter of 2015 (includes the record cold February) is 8,600, seasonally adjusted. This compares to 6,600 in the first quarter of 2014 (polar vortex year), and 3,100 for the first quarter of 2013 (40-inch blizzard year).

Recession recovery: Connecticut has now recovered 92,700 positions, or 77.9% of the 119,000 seasonally adjusted **total nonfarm** jobs that were lost in the state during the March 2008 - February 2010 employment recession. Connecticut's jobs recovery is now 61 months old and is averaging 1,520 jobs per month since February 2010. The **private sector** has recovered employment at an improved pace and has now restored 99,200 (88.9%) of the 111,600 private sector jobs that were lost during the recession (a pace of 1,626 per month). The state needs to reach the 1,713,000 level to move into an employment expansion. This will require an additional 26,300 nonfarm jobs. A total of just 12,400 additional private sector positions are needed to have a fully-restored private sector. The **government supersector** has continued to lose jobs (net -6,500) throughout the nonfarm employment recovery period.

Labor Market Areas (LMAs): *It should be noted that due to town composition changes of greater than 4% in two of the six BLS-recognized LMAs that went into effect at the beginning of this year, the Danbury and Waterbury LMAs are no longer seasonally adjusted by BLS.* The March 2015 preliminary nonfarm job figures specify that three of the four major Connecticut Labor Market Areas that are officially seasonally adjusted posted job gains. The **Hartford-West Hartford-East Hartford LMA** (400, 0.1%), **New Haven LMA** (300, 0.1%) and the **Bridgeport-Stamford-Norwalk LMA** (200, 0.1%) exhibited small monthly seasonally adjusted job gains, while the **Norwich-New London-Westerly LMA** (-800, -0.6%) lost employment again in March. Since March 2014, five of the six major Connecticut BLS-recognized LMAs are posting healthy job gains, as are the three smaller state-estimated LMAs, with just the **Norwich-New London-Westerly LMA** (-1,100, -0.9%, seasonally adjusted) lower now over the year. *Note: The six major Connecticut LMAs are estimated and seasonally adjusted independently (only the largest four LMAs are officially seasonally adjusted) from the statewide numbers by the BLS and cover over 90% of the nonfarm employment in the state; they will not fully sum to the statewide total.*

Hours and Earnings: The **private sector** workweek, not seasonally adjusted, averaged 33.6 hours in March 2015, unchanged from a year ago. Average hourly earnings at \$29.06, not seasonally adjusted, were up 91 cents, or 3.2%, from the March 2014 estimate. The resulting average **private sector** weekly pay was estimated at \$976.42, up \$30.58, or 3.2% higher over the year. The year-to-year change in the Consumer Price Index for All Urban Consumers (CPI-U, U.S. City Average, not seasonally adjusted) in March 2015 was -0.1% (deflating). Information for the manufacturing production workweek and earnings can be found in the table section of this release under the "Hours and Earnings" data category. *Current all-employee private sector hours and earnings estimates can be volatile due to fluctuating sample responses.*

Labor Force Data (residential household survey)

Connecticut's unemployment rate was calculated at **6.4%** for March 2015 (seasonally adjusted). This is unchanged from the February 2015 figure, but down five-tenths of a percentage point from the March 2014 rate of 6.9%. The United States unemployment rate was 5.5% in March, also unchanged from February 2015, and lower by one and one-tenth of a percentage point from a year ago (6.6%).

Unemployment: Based on the Local Area Unemployment Statistics model (a complex statistical model using residential survey data), the number of unemployed, seasonally adjusted, experienced a slight increase of 44 (less than 0.05%) over the month to 121,896 in March 2015. Nevertheless, the number of unemployed residents has declined by 7,599 (-5.9%) since March 2014. Connecticut continued to see civilian labor force growth (6,129, 0.3%) in March, for the eighteenth straight month since September 2013, and the best month so far in 2015. Over the year, labor force growth now measures 36,305 (1.9%, considered statistically significant). The state's labor force now totals 1,916,002, and is at its best annualized growth pace since the recovery began in February 2010.

The March 2015 average weekly initial unemployment claims for first-time Connecticut filers (seasonally adjusted) increased slightly over the month by 46 (1.1%) to 4,070, but are lower by 236 claims (-5.5%) from the March 2014 level of 4,306 claims.

*The nonfarm employment estimate, derived from a survey of businesses, is a measure of jobs in the state; the unemployment rate and Labor Force estimates, are based on a household survey, and measure the work status of people who live in Connecticut. Overall, as the national and state economies recover, volatility in monthly numbers can be expected. **Job and employment estimates are best understood in the context of their movement over several months rather than observed changes in a single month's value.***

Next Connecticut Labor Situation release: Tuesday, May 26, 2015 (April 2015 data)

Contact: Communications Office

(860) 263-6535

04-20-15

Labor market information is available on the Internet at www.ctdol.state.ct.us/lmi
200 Folly Brook Boulevard, Wethersfield, CT 06109-1114 - www.ct.gov/dol
An Equal Opportunity/Affirmative Action Employer

NONFARM EMPLOYMENT

Jobs - by Place of Work

CONNECTICUT AND THE UNITED STATES - Seasonally Adjusted

	March 2015 P	February 2015 R	January 2015	December 2014	March 2014	Over Month Change	Rate	Over Year Change	Rate
CONNECTICUT	1,686,700	1,682,700	1,685,600	1,678,100	1,659,600	4,000	0.2%	27,100	1.6%
Total Private	1,448,000	1,444,300	1,447,000	1,440,400	1,421,900	3,700	0.3%	26,100	1.8%
Goods Producing Industries									
Mining	600	600	600	600	500	0	0.0%	100	20.0%
Construction	54,700	55,500	55,800	54,900	54,400	-800	-1.4%	300	0.6%
Manufacturing	159,700	159,300	159,000	159,700	160,300	400	0.3%	-600	-0.4%
Durable Goods	124,500	123,800	124,100	124,200	124,900	700	0.6%	-400	-0.3%
Nondurable Goods	35,200	35,500	34,900	35,500	35,400	-300	-0.8%	-200	-0.6%
Service Providing Industries									
Trade, Transportation & Utilities	304,800	303,300	301,800	304,100	300,300	1,500	0.5%	4,500	1.5%
Wholesale	62,900	62,700	62,700	62,400	63,000	200	0.3%	-100	-0.2%
Retail	189,200	187,900	186,100	188,300	185,000	1,300	0.7%	4,200	2.3%
Transp, Warehousing & Utilities	52,700	52,700	53,000	53,400	52,300	0	0.0%	400	0.8%
Information	32,000	31,600	31,400	31,400	32,100	400	1.3%	-100	-0.3%
Financial Activities	129,400	129,800	129,900	128,300	128,500	-400	-0.3%	900	0.7%
Finance & Insurance	109,800	110,200	110,300	108,900	109,500	-400	-0.4%	300	0.3%
Real Estate, Rental & Leasing	19,600	19,600	19,600	19,400	19,000	0	0.0%	600	3.2%
Professional & Business Services	217,000	216,100	216,900	214,700	209,900	900	0.4%	7,100	3.4%
Prof, Scientific & Tech Services	96,200	96,400	96,400	96,500	94,500	-200	-0.2%	1,700	1.8%
Management of Companies	30,400	30,400	30,300	30,400	30,700	0	0.0%	-300	-1.0%
Admn & Support & Waste Mgt Serv	90,400	89,300	90,200	87,800	84,700	1,100	1.2%	5,700	6.7%
Educational & Health Services	329,800	329,600	331,500	328,700	322,400	200	0.1%	7,400	2.3%
Educational Services	64,000	63,800	66,100	63,500	62,500	200	0.3%	1,500	2.4%
Health Care & Social Assistance	265,800	265,800	265,400	265,200	259,900	0	0.0%	5,900	2.3%
Leisure and Hospitality	156,100	155,100	156,800	155,000	150,700	1,000	0.6%	5,400	3.6%
Arts, Entertainment & Recreation	28,700	28,500	28,100	28,300	26,600	200	0.7%	2,100	7.9%
Accommodation & Food Services	127,400	126,600	128,700	126,700	124,100	800	0.6%	3,300	2.7%
Other Services	63,900	63,400	63,300	63,000	62,800	500	0.8%	1,100	1.8%
Government**	238,700	238,400	238,600	237,700	237,700	300	0.1%	1,000	0.4%
UNITED STATES	141,183,000	141,057,000	140,793,000	140,592,000	138,055,000	126,000	0.1%	3,128,000	2.3%

LABOR MARKET AREAS (LMA)

Labor Market Area employment estimates are made independently of Statewide estimates.

Seasonally Adjusted data	March 2015 P	February 2015 R	January 2015	December 2014	March 2014	Over Month Change	Rate	Over Year Change	Rate
Bridgeport-Stamford-Norwalk	410,800	410,600	410,900	411,000	404,500	200	0.0%	6,300	1.6%
Hartford	571,100	570,700	571,100	568,600	562,200	400	0.1%	8,900	1.6%
New Haven	282,700	282,400	281,400	281,100	277,600	300	0.1%	5,100	1.8%
Norwich-New London-Westerly	126,900	127,700	128,000	128,300	128,000	-800	-0.6%	-1,100	-0.9%
Danbury - Not Seasonally Adjusted	78,000	77,700	78,300	80,600	76,700	300	0.4%	1,300	1.7%
Waterbury - Not Seasonally Adjusted	67,200	66,800	67,200	69,200	65,800	400	0.6%	1,400	2.1%
<i>Not Seasonally Adjusted data (Non-Classified Areas, State estimated not BLS)</i>									
Enfield	44,600	44,600	44,700	45,800	44,000	0	0.0%	600	1.4%
Torrington-Northwest	32,700	32,700	33,000	33,900	32,400	0	0.0%	300	0.9%
Danielson-Northeast	27,200	26,900	27,200	27,600	27,000	300	1.1%	200	0.7%

* Less than 0.05% ** Includes Native American tribal government employment

P = Preliminary

R = Revised

Starting with March, 2011, our monthly statewide and major LMA nonfarm job estimates have been taken over by the US Department of Labor Bureau of Labor Statistics. This is the final phase of transition in this program, which began in 2008. As a result of changes in the estimation procedures, you are likely to see more variability in month-to-month estimates of job counts. Caution should be used in interpreting any single month's estimate. The data are best interpreted to identify trends and cycles over several months and quarters. If you have any questions about these changes, please email us at: dol.lmi@ct.gov. Danbury and Waterbury LMA's are now not seasonally adjusted.

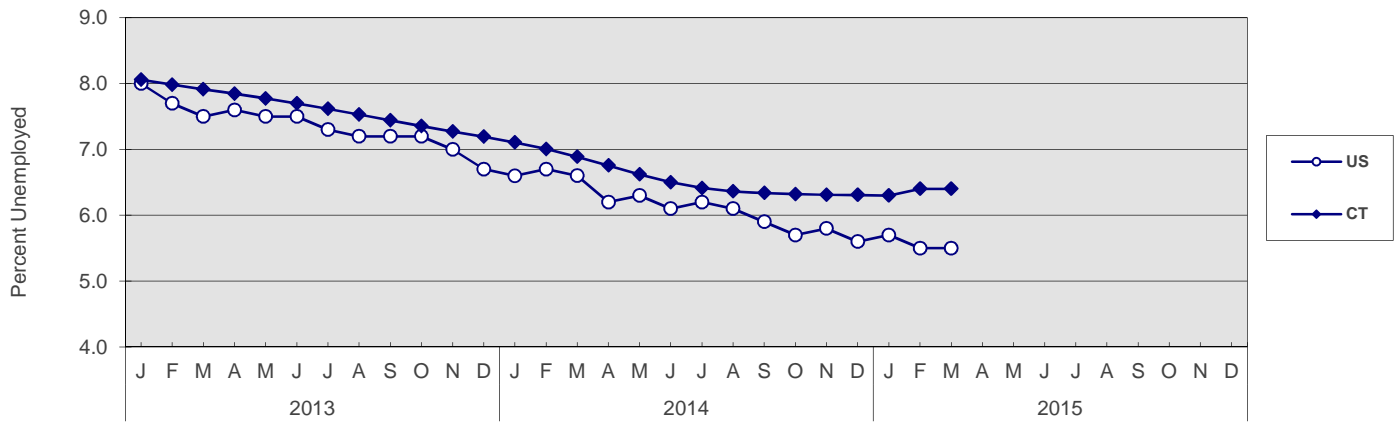
UNEMPLOYMENT

Persons Unemployed - by Place of Residence

CONNECTICUT AND THE UNITED STATES - Seasonally Adjusted

	Mar. 2015 P		Mar. 2014 R		Change		Feb. 2015 R	
	Number	Rate	Number	Rate	Number	Points	Number	Rate
CONNECTICUT								
Unemployed	121,900	6.4	129,500	6.9	-7,600	-0.5	121,900	6.4
Labor Force	1,916,000		1,879,700		36,300		1,909,900	
UNITED STATES								
Unemployed	8,575,000	5.5	10,384,000	6.6	-1,809,000	-1.1	8,705,000	5.5
Labor Force	156,906,000		156,180,000		726,000		157,002,000	

U.S. AND CONNECTICUT UNEMPLOYMENT RATES - Seasonally Adjusted 2013 - 2015



LABOR MARKET AREAS - Not Seasonally Adjusted

	Mar. 2015 P		Mar. 2014 R		Change		Feb. 2015 R	
	Number	Rate	Number	Rate	Number	Points	Number	Rate
Bridgeport-Stamford	29,400	6.3	31,900	7.0	-2,500	-0.7	30,900	6.7
Danbury	5,700	5.3	6,200	5.9	-500	-0.6	6,000	5.6
Danielson-Northeast*	3,200	7.3	3,400	8.0	-200	-0.7	3,400	7.9
Worcester NECTA	3,100	7.4	3,300	8.1	-200	-0.7	3,300	7.9
Hampton	100	5.7	100	6.8	0	-1.1	100	6.2
Enfield	3,100	6.2	3,300	6.9	-200	-0.7	3,200	6.5
Hartford	40,500	6.5	44,300	7.2	-3,800	-0.7	42,500	6.8
New Haven	20,900	6.4	23,500	7.3	-2,600	-0.9	22,000	6.8
Norwich-New London	10,100	7.2	11,000	7.8	-900	-0.6	10,700	7.6
Torrington-Northwest**	3,200	6.7	3,400	7.3	-200	-0.6	3,400	7.1
Torrington NECTA	2,100	7.6	2,200	8.2	-100	-0.6	2,200	8.2
Litchfield	1,100	5.4	1,200	6.0	-100	-0.6	1,200	5.7
Waterbury	9,300	8.2	10,000	9.0	-700	-0.8	9,900	8.8
CONNECTICUT	124,100	6.5	135,400	7.3	-11,300	-0.8	130,900	6.9
UNITED STATES	8,682,000	5.6	10,537,000	6.8	-1,855,000	-1.2	9,095,000	5.8

P = Preliminary

R = Revised

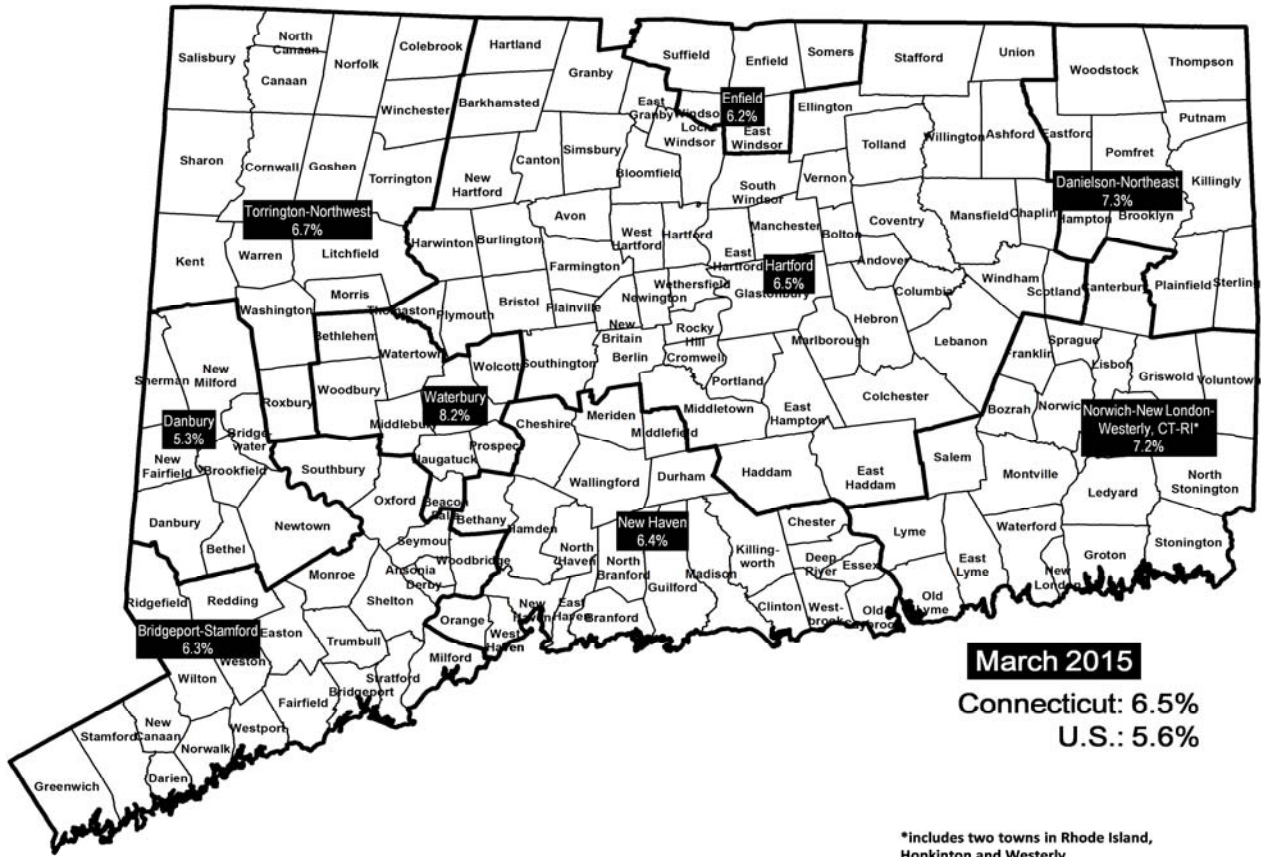
Labor force data included in this publication are developed in cooperation with the U.S. Department of Labor, Bureau of Labor Statistics.

* Worcester NECTA, CT part and Hampton LMA are combined ** Torrington Metropolitan NECTA and Litchfield LMA are combined

UNEMPLOYMENT RATES

Not Seasonally Adjusted

LABOR MARKET AREAS



*Includes two towns in Rhode Island, Hopkinton and Westerly.

HOURS AND EARNINGS

CONNECTICUT Statewide - Not Seasonally Adjusted

	Average Weekly Earnings				Average Weekly Hours				Average Hourly Earnings			
	Mar. 2015 P	Mar. 2014	Change over Yr.	Feb. 2015 R	Mar. 2015 P	Mar. 2014	Change over Yr.	Feb. 2015 R	Mar. 2015 P	Mar. 2014	Change over Yr.	Feb. 2015 R
Private Industry All Employees	\$976.42	\$945.84	\$30.58	\$972.94	33.6	33.6	0.0	33.4	\$29.06	\$28.15	\$0.91	\$29.13
Manufacturing*												
Production Workers	\$1,017.09	\$894.24	\$122.85	\$991.67	40.7	41.4	-0.7	40.1	\$24.99	\$21.60	\$3.39	\$24.73

* Production worker data have been impacted by the loss of a large, high-paying manufacturer from the monthly sample.

P = Preliminary R = Revised

Hours and earnings are also developed for the state's major industry sectors and Labor Market Areas. They can be found on our website at: www.ctdol.state.ct.us/lmi.

TRENDS

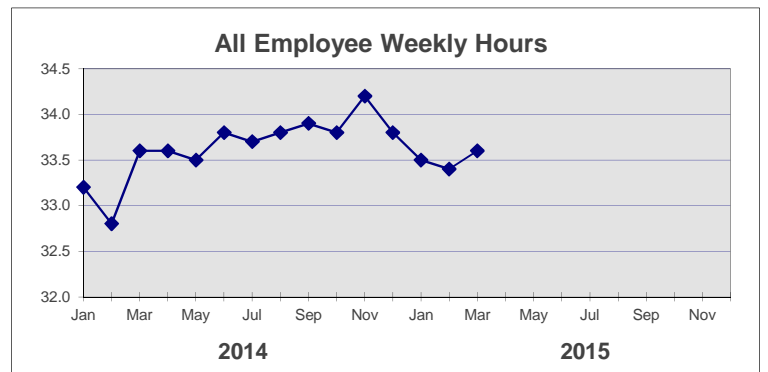
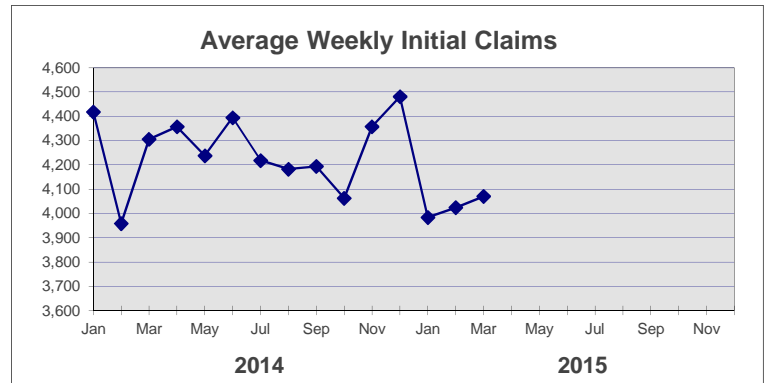
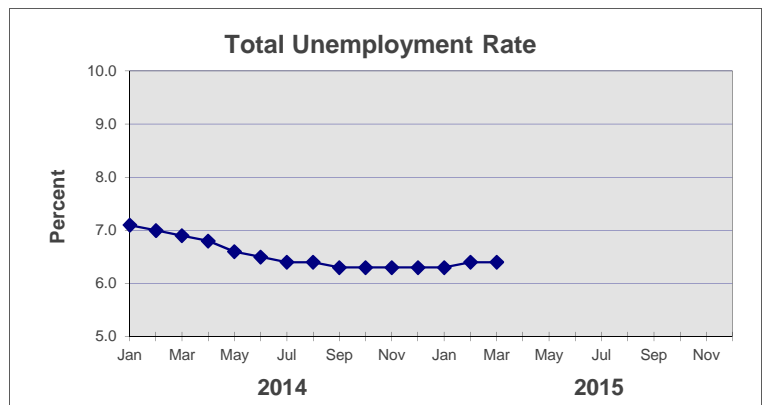
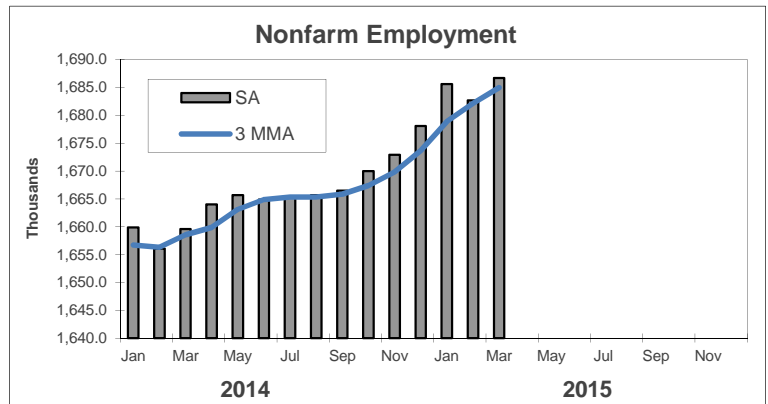
Seasonally Adjusted

	Nonfarm Employment (000s)	Total Unemployment Rate
2014		
Jan	1,659.9	7.1
Feb	1,656.1	7.0
Mar	1,659.6	6.9
Apr	1,664.0	6.8
May	1,665.7	6.6
Jun	1,664.9	6.5
Jul	1,665.4	6.4
Aug	1,665.7	6.4
Sep	1,666.5	6.3
Oct	1,670.0	6.3
Nov	1,672.9	6.3
Dec	1,678.1	6.3

2015		
Jan	1,685.6	6.3
Feb	1,682.7 R	6.4 R
Mar	1,686.7 P	6.4 P
Apr		
May		
Jun		
Jul		
Aug		
Sep		
Oct		
Nov		
Dec		

	Avg Weekly Initial Claims	All Employee Weekly Hours*
2014		
Jan	4,418	33.2
Feb	3,959	32.8
Mar	4,306	33.6
Apr	4,357	33.6
May	4,238	33.5
Jun	4,395	33.8
Jul	4,218	33.7
Aug	4,183	33.8
Sep	4,194	33.9
Oct	4,063	33.8
Nov	4,358	34.2
Dec	4,481	33.8

2015		
Jan	3,984	33.5
Feb	4,024	33.4 R
Mar	4,070	33.6 P
Apr		
May		
Jun		
Jul		
Aug		
Sep		
Oct		
Nov		
Dec		



* Not seasonally adjusted

P = Preliminary

R = Revised

** Labor-management dispute