



LABOR SITUATION

Office of Research
Sharon M. Palmer, Commissioner

FOR IMMEDIATE RELEASE

February 2015 Data
CT Unemployment Rate = 6.4%
US Unemployment Rate = 5.5%

Unemployment rate ticks up as jobs decline in record February cold spell

WETHERSFIELD, March 26, 2015 – Based on the U.S. Bureau of Labor Statistics's (BLS) preliminary monthly survey of businesses and governments, Connecticut lost 3,700 nonfarm jobs in February 2015 - seasonally adjusted. Since February 2014, however, Connecticut's nonfarm employment has increased by 25,800 positions or 1.56% (2,150 jobs per month average) to 1,681,900 jobs. February 2015 was officially the coldest month ever recorded for average temperatures in the state and this noticeably influenced the monthly employment decline. January's initially reported job increase of 6,400 (0.38%) was enhanced by 1,100 positions to a 7,500 (0.45%) gain before February's frigid weather set in.

The unemployment rate in Connecticut was slightly higher in February 2015 at 6.4%, seasonally adjusted, up a tenth of a percentage point from January, according to the latest federal residential/household survey (Current Population Survey). This is down by six-tenths of a percentage point from the February 2014 unemployment rate of 7.0%. Over the year, the number of unemployed in the state has fallen by 9,583 (-7.3%) to 121,983, but did increase marginally last month (1,744). The state's labor force continued to grow last month (5,368) despite the cold for the seventeenth month in a row and has increased by 32,203 workers on an annual basis (1.7%).

"Connecticut's record cold February temperatures and frequent snow appears to have affected industry employment, hours worked, and some unemployment claims activity last month," said Andy Condon, Director of the Office of Research. "Nevertheless, the state's labor force weathered the cold and continues to expand, bringing out more jobseekers."

Nonfarm Jobs (business establishment survey)

Preliminary nonfarm employment estimates for February show Connecticut lost 3,700 (-0.22%, seasonally adjusted) jobs. Six of the ten major industry *supersectors* were lower in employment in February, while three posted job gains, and the **other services** *supersector* was unchanged. Connecticut over-the-year job gains now total 25,800 (1.56%, 2,150 per month) with eight industry *supersectors* displaying positive job growth, and just two having declined. The current February nonfarm employment level of 1,681,900 virtually matches the latest three-month moving average.

In February 2015, **the private sector** declined by 3,500 jobs (-0.24%), and yet Connecticut private sector firms still have increased employment by a solid 24,500 (1.73%) positions since February 2014. Government *supersector's* job gains have been smaller over the year (1,300, 0.55%, employment on federally-recognized Indian reservations including casinos is calculated in local government). Monthly government job levels were lower in February 2015 (-200, -0.08%) from January 2015 as well.

Just three of the ten major industry *supersectors* saw increases in February. Job growth was led by **trade, transportation & utilities** (1,300, 0.4%). Retail trade (1,800, 1.0%) bounced back last month after a large decline in January, while wholesale trade was unchanged and transportation and utilities (-500, -0.9%) was lower. Smaller job gains of just 200 each were seen in the **information** (200, 0.6%) and **manufacturing** (200, 0.1%) *supersectors*.

Education and health services (-1,800, -0.5%) was the largest of the declining *supersectors*. It still remains the biggest growing industry *supersector* (8,600, 2.7%) over the year. **Professional and business services** (-1,500, -0.7%) also saw a sizable loss in February. Some of the employment decline experienced last month came from industries that are typically susceptible to cold and stormy weather such as **leisure and hospitality** (-900, -0.6%) and the combined **construction and mining** (-800, -1.4%) *supersectors*. Restaurants and drinking places were sluggish in **leisure and hospitality**, while specialty trade employment declines held back **construction and mining**. The **financial activities** (-200, -0.2%) and the **government** (-200, -0.1%) *supersectors* posted 200 job losses each last month. The **other services** *supersector* was unchanged in February.

Last February 2014, during the so-called polar vortex - Connecticut's total nonfarm employment experienced a seasonally-adjusted job decline of 3,800 (-0.23%, benchmarked). In February 2013, the year of the 40-inch blizzard in the state, the nonfarm job loss was similar at -3,500 (-0.21%, benchmarked). This year's February 2015 job loss, during the coldest ever month in the state, was estimated at -3,700 (-0.22%) and brought a string of seven statewide monthly nonfarm job gains in a row to an end.

Recession recovery: Connecticut has now recovered 87,900 positions, or 73.9% of the now 119,000 seasonally adjusted **total nonfarm** jobs that were lost in the state during the March 2008 - February 2010 employment recession (post-benchmark). Connecticut's jobs recovery is now 60 months old and is averaging 1,465 jobs per month since February 2010. The **private sector** has recovered employment at faster pace and has now recovered 94,700 (84.9%) of the 111,600 private sector jobs that were lost during the same recessionary downturn (a pace of about 1,578 per month). At 1,681,900 overall nonfarm jobs for February 2015, the state needs to reach the 1,713,000 level to start a true nonfarm employment expansion. This will require an additional 31,100 nonfarm jobs. A total of just 16,900 additional private sector positions are needed to have a fully-recovered private sector. The **government supersector** has continued to lose even more jobs (-6,800) throughout the nonfarm employment recovery period, thus prolonging the recovery.

Labor Market Areas (LMAs): *It should be noted that due to town composition changes of greater than 4% in two of the six BLS-recognized LMAs that went into effect at the beginning of this year, the Danbury and Waterbury LMAs are no longer seasonally adjusted by BLS.* The February 2015 preliminary nonfarm job numbers indicate that only two of the four major Connecticut Labor Market Areas that are officially seasonally adjusted posted job gains. The **New Haven LMA** (700, 0.2%) and the **Bridgeport-Stamford-Norwalk LMA** (300, 0.1%) posted small monthly job gains, while the **Hartford-West Hartford-East Hartford LMA** (-800, 0.1%) and the **Norwich-New London-Westerly LMA** (-500, -0.4%) were down in employment in February. Over the year, five of the six major Connecticut BLS-recognized LMAs are now positive, as are the three smaller state-estimated LMAs, with just the **Norwich-New London-Westerly LMA** (-400, -0.3%, seasonally adjusted) lower now since February 2014. *Note: The six major Connecticut LMAs are estimated and seasonally adjusted independently (only the largest four LMAs are seasonally adjusted) from the statewide numbers by the BLS and cover over 90% of the nonfarm employment in the state; they will not fully sum to the statewide total.*

Hours and Earnings: The **private sector** workweek, not seasonally adjusted, averaged 33.3 hours in February 2015, and is higher by 30 minutes (1.5%) from the year-ago estimate of 32.8 hours. Average hourly earnings at \$28.99, not seasonally adjusted, were up 59 cents, or 2.1%, from the February 2014 estimate. The resultant average **private sector** weekly pay was calculated at \$965.37, up \$33.85, or 3.6% over the year. The year-to-year change in the Consumer Price Index for All Urban Consumers (CPI-U, U.S. City Average, not seasonally adjusted) in February 2015 was exactly 0.0%, unchanged. Information for the manufacturing production workweek and earnings can be found in the table section of this release under the "Hours and Earnings" data category. *Current all-employee private sector hours and earnings estimates can be volatile due to fluctuating sample responses.*

Labor Force Data (residential household survey)

On a seasonally adjusted basis, Connecticut's unemployment rate was calculated at **6.4%** for February 2015. This is up a tenth of a percentage point from the January 2015 rate of 6.3%, but down six-tenths of a percentage point from the February 2014 figure of 7.0%. The US unemployment rate was 5.5% in February, down by two-tenths of a percent from January 2015 (5.7%) and lower by one and two-tenths of a percentage point from a year ago (6.7%).

Unemployment: Based on the Local Area Unemployment Statistics model (a complex statistical model using residential survey data), the number of unemployed, seasonally adjusted, saw an increase of 1,744 (1.5%) over the month to 121,983 in February 2015. Notwithstanding, the number of unemployed residents has decreased by 9,583 (-7.3%) since February 2014. In February 2015, Connecticut continued to see civilian labor force growth (5,368, 0.3%), despite the cold, for the seventeenth straight time since September 2013. Over the year, labor force growth is now 32,203 (1.7%, considered statistically significant, totaling 1,909,839) in the state.

The February 2015 average weekly initial unemployment claims for first-time Connecticut filers (seasonally adjusted) increased over the month by 40 (1.0%) to 4,024, and are slightly higher by 65 claims (1.6%) from the February 2014 total (3,959, the lowest monthly average weekly claims level since the recovery began).

*The nonfarm employment estimate, derived from a survey of businesses, is a measure of jobs in the state; the unemployment rate, based on a household survey, is a measure of the work status of people who live in Connecticut. Overall, as the national and state economies recover, volatility in monthly numbers can be expected. **Job and employment estimates are best understood in the context of their movement over several months rather than observed changes in a single month's value.***

Next Connecticut Labor Situation release: Monday, April 20, 2015 (March 2015 data)

Contact: Communications Office

(860) 263-6535

03-26-15

Labor market information is available on the Internet at www.ctdol.state.ct.us/lmi
200 Folly Brook Boulevard, Wethersfield, CT 06109-1114 - www.ct.gov/dol
An Equal Opportunity/Affirmative Action Employer

NONFARM EMPLOYMENT

Jobs - by Place of Work

CONNECTICUT AND THE UNITED STATES - Seasonally Adjusted

	February 2015 P	January 2015 R	December 2014	November 2014	February 2014	Over Month Change	Rate	Over Year Change	Rate
CONNECTICUT	1,681,900	1,685,600	1,678,100	1,672,900	1,656,100	-3,700	-0.2%	25,800	1.6%
Total Private	1,443,500	1,447,000	1,440,400	1,435,500	1,419,000	-3,500	-0.2%	24,500	1.7%
Goods Producing Industries									
Mining	600	600	600	600	500	0	0.0%	100	20.0%
Construction	55,000	55,800	54,900	55,700	54,100	-800	-1.4%	900	1.7%
Manufacturing	159,200	159,000	159,700	158,500	160,800	200	0.1%	-1,600	-1.0%
Durable Goods	123,800	124,100	124,200	123,000	125,300	-300	-0.2%	-1,500	-1.2%
Nondurable Goods	35,400	34,900	35,500	35,500	35,500	500	1.4%	-100	-0.3%
Service Providing Industries									
Trade, Transportation & Utilities	303,100	301,800	304,100	303,700	299,600	1,300	0.4%	3,500	1.2%
Wholesale	62,700	62,700	62,400	62,700	63,100	0	0.0%	-400	-0.6%
Retail	187,900	186,100	188,300	187,900	184,400	1,800	1.0%	3,500	1.9%
Transp, Warehousing & Utilities	52,500	53,000	53,400	53,100	52,100	-500	-0.9%	400	0.8%
Information	31,600	31,400	31,400	31,200	31,900	200	0.6%	-300	-0.9%
Financial Activities	129,700	129,900	128,300	128,400	128,700	-200	-0.2%	1,000	0.8%
Finance & Insurance	110,100	110,300	108,900	109,000	109,600	-200	-0.2%	500	0.5%
Real Estate, Rental & Leasing	19,600	19,600	19,400	19,400	19,100	0	0.0%	500	2.6%
Professional & Business Services	215,400	216,900	214,700	213,800	209,800	-1,500	-0.7%	5,600	2.7%
Prof, Scientific & Tech Services	96,500	96,400	96,500	95,900	94,300	100	0.1%	2,200	2.3%
Management of Companies	30,400	30,300	30,400	30,600	30,400	100	0.3%	0	0.0%
Admn & Support & Waste Mgt Serv	88,500	90,200	87,800	87,300	85,100	-1,700	-1.9%	3,400	4.0%
Educational & Health Services	329,700	331,500	328,700	327,600	321,100	-1,800	-0.5%	8,600	2.7%
Educational Services	63,900	66,100	63,500	63,500	62,700	-2,200	-3.3%	1,200	1.9%
Health Care & Social Assistance	265,800	265,400	265,200	264,100	258,400	400	0.2%	7,400	2.9%
Leisure and Hospitality	155,900	156,800	155,000	153,100	149,900	-900	-0.6%	6,000	4.0%
Arts, Entertainment & Recreation	28,800	28,100	28,300	27,300	26,400	700	2.5%	2,400	9.1%
Accommodation & Food Services	127,100	128,700	126,700	125,800	123,500	-1,600	-1.2%	3,600	2.9%
Other Services	63,300	63,300	63,000	62,900	62,600	0	0.0%	700	1.1%
Government**	238,400	238,600	237,700	237,400	237,100	-200	-0.1%	1,300	0.5%
UNITED STATES	141,126,000	140,831,000	140,592,000	140,263,000	137,830,000	295,000	0.2%	3,296,000	2.4%

LABOR MARKET AREAS (LMA)

Labor Market Area employment estimates are made independently of Statewide estimates.

Seasonally Adjusted data	February 2015 P	January 2015 R	December 2014	November 2014	February 2014	Over Month Change	Rate	Over Year Change	Rate
Bridgeport-Stamford-Norwalk	411,200	410,900	411,000	409,900	404,100	300	0.1%	7,100	1.8%
Hartford	570,300	571,100	568,600	566,600	561,400	-800	-0.1%	8,900	1.6%
New Haven	282,100	281,400	281,100	280,300	277,200	700	0.2%	4,900	1.8%
Norwich-New London-Westerly	127,500	128,000	128,300	128,100	127,900	-500	-0.4%	-400	-0.3%
Danbury - Not Seasonally Adjusted	77,700	78,300	80,600	79,600	75,900	-600	-0.8%	1,800	2.4%
Waterbury - Not Seasonally Adjusted	66,800	67,200	69,200	68,800	65,500	-400	-0.6%	1,300	2.0%
<i>Not Seasonally Adjusted data (Non-Classified Areas, State estimated not BLS)</i>									
Enfield	44,600	44,700	45,800	45,600	43,900	-100	-0.2%	700	1.6%
Torrington-Northwest	32,700	33,000	33,900	33,800	32,400	-300	-0.9%	300	0.9%
Danielson-Northeast	26,900	27,200	27,600	27,700	26,700	-300	-1.1%	200	0.7%

* Less than 0.05% ** Includes Native American tribal government employment

P = Preliminary

R = Revised

Starting with March, 2011, our monthly statewide and major LMA nonfarm job estimates have been taken over by the US Department of Labor Bureau of Labor Statistics. This is the final phase of transition in this program, which began in 2008. As a result of changes in the estimation procedures, you are likely to see more variability in month-to-month estimates of job counts. Caution should be used in interpreting any single month's estimate. The data are best interpreted to identify trends and cycles over several months and quarters. If you have any questions about these changes, please email us at: dol.lmi@ct.gov. Danbury and Waterbury LMA's are now not seasonally adjusted.

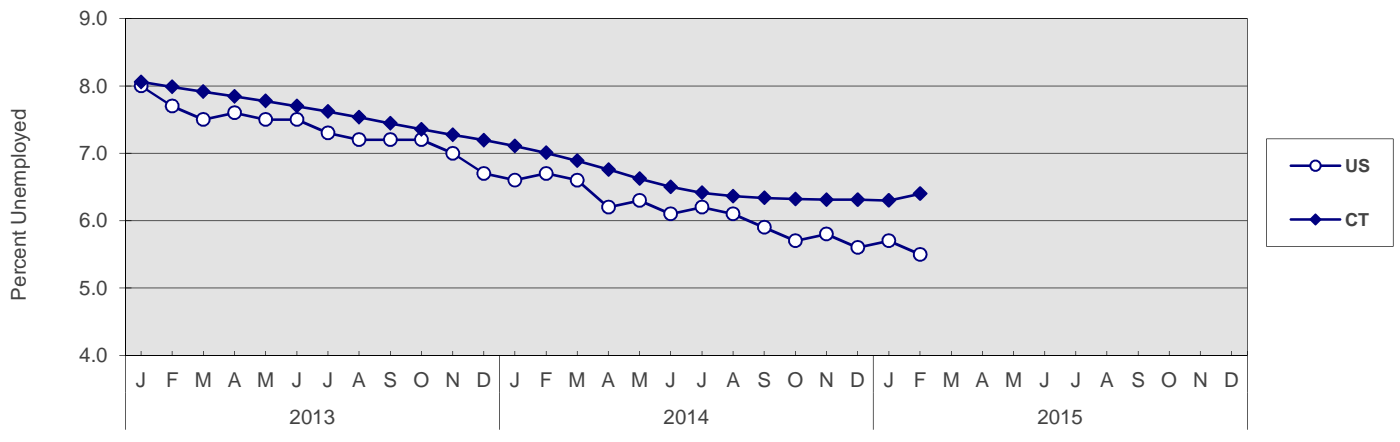
UNEMPLOYMENT

Persons Unemployed - by Place of Residence

CONNECTICUT AND THE UNITED STATES - Seasonally Adjusted

	Feb. 2015 P		Feb. 2014 R		Change		Jan. 2015 R	
	Number	Rate	Number	Rate	Number	Points	Number	Rate
CONNECTICUT								
Unemployed	122,000	6.4	131,600	7.0	-9,600	-0.6	120,200	6.3
Labor Force	1,909,800		1,877,600		32,200		1,904,500	
UNITED STATES								
Unemployed	8,705,000	5.5	10,387,000	6.7	-1,682,000	-1.2	8,979,000	5.7
Labor Force	157,002,000		155,688,000		1,314,000		157,180,000	

U.S. AND CONNECTICUT UNEMPLOYMENT RATES - Seasonally Adjusted 2013 - 2015



LABOR MARKET AREAS - Not Seasonally Adjusted

	Feb. 2015 P		Feb. 2014 R		Change		Jan. 2015 R	
	Number	Rate	Number	Rate	Number	Points	Number	Rate
Bridgeport-Stamford	31,000	6.7	32,800	7.2	-1,800	-0.5	29,800	6.4
Danbury	6,000	5.6	6,300	6.1	-300	-0.5	5,700	5.4
Danielson-Northeast	3,400	7.9	3,500	8.3	-100	-0.4	3,200	7.5
Enfield	3,200	6.5	3,400	7.1	-200	-0.6	3,200	6.5
Hartford	42,700	6.9	45,400	7.5	-2,700	-0.6	41,900	6.8
New Haven	22,100	6.8	24,000	7.5	-1,900	-0.7	21,700	6.7
Norwich-New London	10,700	7.6	11,400	8.1	-700	-0.5	10,600	7.5
Torrington-Northwest	3,400	7.1	3,500	7.4	-100	-0.3	3,300	6.8
Waterbury	10,000	8.8	10,400	9.4	-400	-0.6	9,600	8.5
CONNECTICUT	131,200	6.9	139,000	7.5	-7,800	-0.6	127,500	6.8
UNITED STATES	9,095,000	5.8	10,893,000	7.0	-1,798,000	-1.2	9,498,000	6.1

P = Preliminary

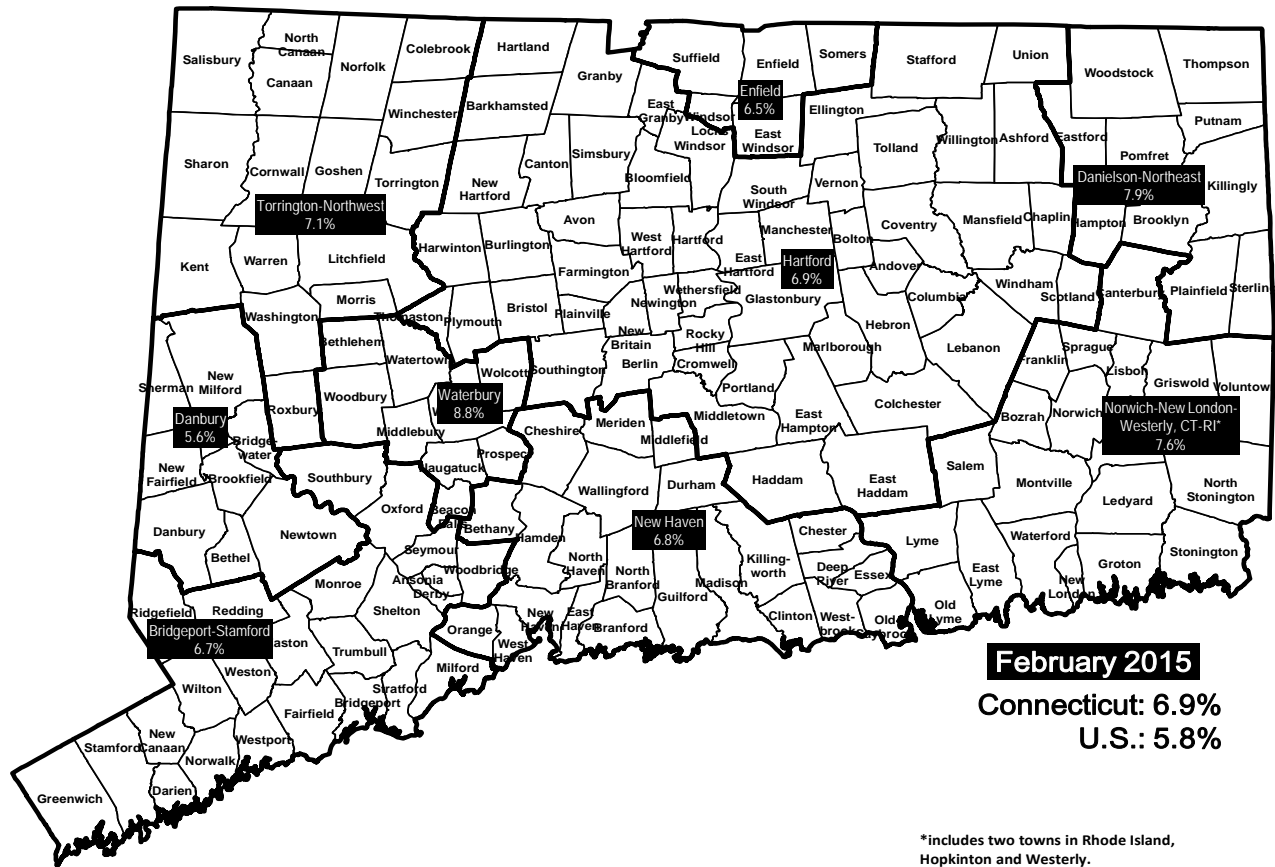
R = Revised

Labor force data included in this publication are developed in cooperation with the U.S. Department of Labor, Bureau of Labor Statistics.

UNEMPLOYMENT RATES

Not Seasonally Adjusted

LABOR MARKET AREAS



*includes two towns in Rhode Island, Hopkinton and Westerly.

HOURS AND EARNINGS

CONNECTICUT Statewide - Not Seasonally Adjusted

	Average Weekly Earnings				Average Weekly Hours				Average Hourly Earnings			
	Feb. 2015 P	Feb. 2014	Change over Yr.	Jan. 2015 R	Feb. 2015 P	Feb. 2014	Change over Yr.	Jan. 2015 R	Feb. 2015 P	Feb. 2014	Change over Yr.	Jan. 2015 R
Private Industry All Employees	\$965.37	\$931.52	\$33.85	\$956.09	33.3	32.8	0.5	33.5	\$28.99	\$28.40	\$0.59	\$28.54
Manufacturing*												
Production Workers	\$990.80	\$880.15	\$110.65	\$996.71	40.0	40.3	-0.3	40.5	\$24.77	\$21.84	\$2.93	\$24.61

* Production worker data have been impacted by the loss of a large, high-paying manufacturer from the monthly sample.

P = Preliminary R = Revised

Hours and earnings are also developed for the state's major industry sectors and Labor Market Areas. They can be found on our website at: www.ctdol.state.ct.us/lmi.

TRENDS

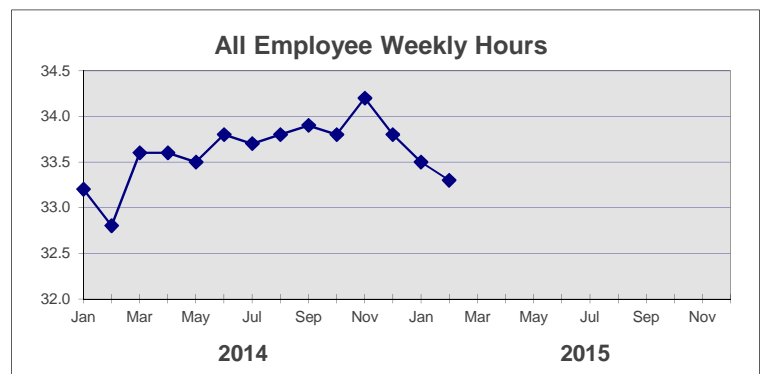
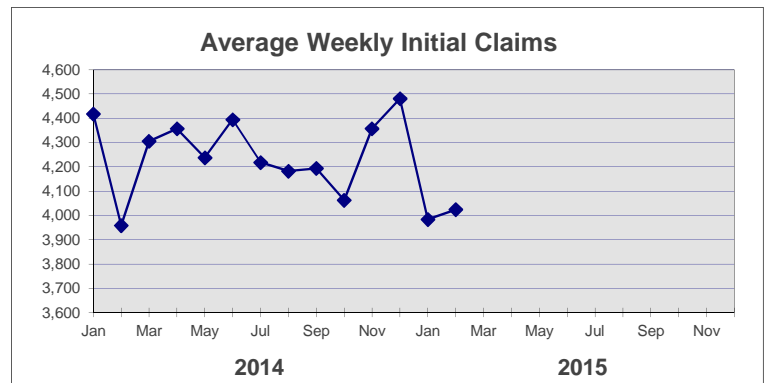
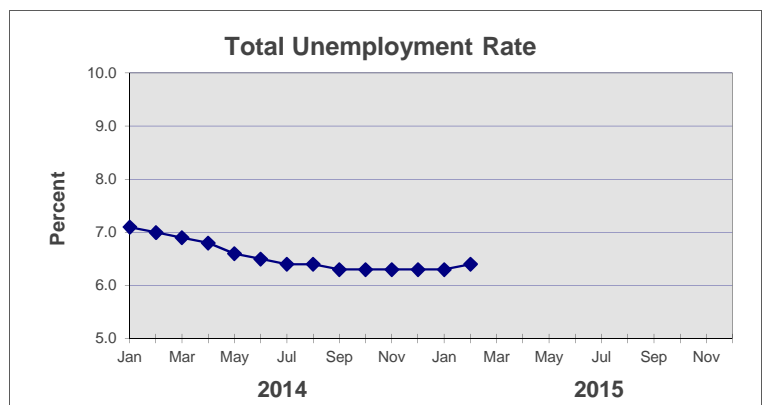
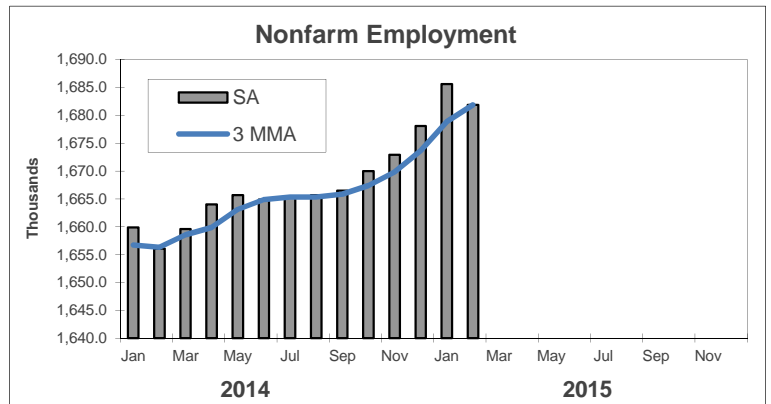
Seasonally Adjusted

	Nonfarm Employment (000s)	Total Unemployment Rate
2014		
Jan	1,659.9	7.1
Feb	1,656.1	7.0
Mar	1,659.6	6.9
Apr	1,664.0	6.8
May	1,665.7	6.6
Jun	1,664.9	6.5
Jul	1,665.4	6.4
Aug	1,665.7	6.4
Sep	1,666.5	6.3
Oct	1,670.0	6.3
Nov	1,672.9	6.3
Dec	1,678.1	6.3

2015		
Jan	1,685.6 R	6.3 R
Feb	1,681.9 P	6.4 P
Mar		
Apr		
May		
Jun		
Jul		
Aug		
Sep		
Oct		
Nov		
Dec		

	Avg Weekly Initial Claims	All Employee Weekly Hours*
2014		
Jan	4,418	33.2
Feb	3,959	32.8
Mar	4,306	33.6
Apr	4,357	33.6
May	4,238	33.5
Jun	4,395	33.8
Jul	4,218	33.7
Aug	4,183	33.8
Sep	4,194	33.9
Oct	4,063	33.8
Nov	4,358	34.2
Dec	4,481	33.8

2015		
Jan	3,984	33.5 R
Feb	4,024	33.3 P
Mar		
Apr		
May		
Jun		
Jul		
Aug		
Sep		
Oct		
Nov		
Dec		



* Not seasonally adjusted

P = Preliminary

R = Revised

** Labor-management dispute