



LABOR SITUATION

Office of Research
Sharon M. Palmer, Commissioner

FOR IMMEDIATE RELEASE

November 2015 Data
CT Unemployment Rate = 5.1%
US Unemployment Rate = 5.0%

Job gains resume in November (5,100); unemployment rate steady at 5.1%

WETHERSFIELD, December 17, 2015 – The preliminary November nonfarm job estimates originating from the U.S. Bureau of Labor Statistics (BLS) payroll survey indicate Connecticut added 5,100 jobs (0.30%) last month to a level of 1,699,700, seasonally adjusted. The state has increased nonfarm jobs by 26,800 (1.60%, about 2,233 per month) over the year with eight positive months and four down months. Last month's solid nonfarm employment increase came after two months of declines. The October 2015 preliminary estimated nonfarm employment loss of 2,200 (-0.13%) was upgraded to a 1,700 (-0.10%) job decline for the prior month.

Connecticut's unemployment rate was estimated at 5.1%, seasonally adjusted, for November 2015. This is unchanged from October's revised rate and down one and two-tenths of a percentage point from the November 2014 unemployment rate of 6.3%. Connecticut's unemployment rate has not been this low since March 2008 (5.1%), which was the start of the Great Recession employment downturn in our state.

"Job growth in November was broad-based and noteworthy after two months of declines," said Andy Condon, Director of the Office of Research. "Private sector job growth reached a landmark, recovering the losses seen in the 2008 to 2010 recession."

Nonfarm Jobs Detail (business establishment survey)

Initial employment estimates for November 2015 show Connecticut nonfarm jobs increased by 5,100 (0.30%), seasonally adjusted, with seven major industry *supersectors* gaining jobs, two declining, and **financial activities** reporting unchanged. The state's nonfarm employment level is back above its three-month moving average trend (see page 7). Over the year, Connecticut's nonfarm job gains are now 26,800 (1.60%) with only the **other services supersector** (-700, -1.1%) losing jobs out of the ten major industry *supersectors*.

The state's **private sector** increased jobs by 5,200 (0.36%) in November and has added 26,700 positions (1.86%, 2,225 jobs per month) over the year to a level of 1,462,200, seasonally adjusted. The private sector is now estimated to have recovered 113,400 (101.6%) of the 111,600 private sector jobs lost in the Great Recession and has entered an expansionary phase (see page 3). The **government supersector** lost 100 jobs (-0.04%) last month but is still slightly positive over the year (100, 0.04%).

Seven of the ten major industry *supersectors* added jobs in November, led by **leisure and hospitality** (1,500, 0.9%). The persisting warmer weather last month may have helped boost arts, entertainment, and recreation (300, 1.1%) and the accommodation and food services (1,200, 0.9%) components in this *supersector*. The **leisure and hospitality supersector** also led all ten major industry *supersectors* in job growth percentage and magnitude over the year (6,300, 4.1%). The **trade, transportation & utilities** (1,100, 0.4%) *supersector* also grew with all its components: wholesale trade (500, 0.8%), retail trade (100, 0.1%) and transportation and utilities (500, 0.9%) contributing. The **professional and business services** (1,000, 0.5%) and **manufacturing** (800, 0.5%) *supersectors* also saw decent gains. Smaller monthly employment gains came from **education and health services** (500, 0.2%), the combined **construction and mining** (400, 0.7%) segment, and the **other services** (300, 0.5%) *supersectors*.

The two declining *supersectors*, **information** (-400, -1.2%) and **government** (-100, -0.04%), saw only small losses. Local government (-200, -0.1%) led the overall public sector loss, while federal government (100, 0.6%) was positive and state government was unchanged.

The year-to-date pace of nonagricultural job growth in Connecticut for 2015 is 21,600 (7 up, 4 down months, an average of 1,963 jobs per month) versus 19,900 (8 up, 3 down months, an average of 1,809 jobs per month) for the first eleven months of 2014.

Recession recovery: Connecticut has now recovered 105,700 positions, or 88.8% of the 119,000 seasonally adjusted total nonfarm jobs that were lost in the state during the March 2008 - February 2010 employment downturn. The state needs to reach the 1,713,000 job level to enter a full nonfarm employment expansionary phase. This will require an additional 13,300 nonfarm jobs. Connecticut's nonfarm jobs recovery is now 69 months old and is averaging 1,532 new jobs per month since February 2010. There have been 47 monthly job gains (68.1%), 21 monthly job losses, and one unchanged month (November 2010) during this period. The state's **private sector** has recovered employment at a better pace and has now regained 113,400 (101.6%) of the 111,600 private sector positions that were lost in the same employment recession. Connecticut's private sector nonfarm employment is now estimated to have fully recovered all the jobs lost in the Great Recession and is in an expansionary phase. The state's government *supersector*, which includes Native American casino employment on federally-recognized reservations, still shows fewer jobs (-7,700) than it did at the depth of the recession.

Labor Market Areas (LMAs): The November 2015 preliminary nonfarm job statistics show that all four of Connecticut's Labor Market Areas that are *seasonally adjusted* by the Bureau of Labor Statistics increased jobs last month. The **Hartford-West Hartford-East Hartford LMA** (3,500, 0.6%, 578,000) and the **Bridgeport-Stamford-Norwalk LMA** (2,300, 0.6%, 418,100), the state's two largest labor markets, exhibited strong job growth last month, while the **New Haven LMA** (1,300, 0.5%, 282,300) and the **Norwich-New London-Westerly LMA** (300, 0.2%, 127,600, includes Westerly and Hopkinton, RI, based on commuter patterns) contributed as well. The **Hartford-West Hartford-East Hartford LMA** (11,400, 2.01%), still leads all major labor markets in yearly job growth magnitude and just barely leads the **Bridgeport-Stamford-Norwalk LMA** (8,200, 2.00%) in annual percentage terms. *Note: The six major Connecticut LMAs are estimated independently from the statewide data by the BLS and cover more than 90% of the nonfarm employment in the state. Thus estimates will not fully sum to the statewide total.*

Hours and Earnings: The **private sector** workweek, not seasonally adjusted, averaged 33.9 hours in November 2015, down three-tenths of an hour from the same month a year ago (34.2 hours). Average hourly earnings at \$29.82, not seasonally adjusted, were up \$1.16, or 4.0%, from the November 2014 estimate. The resulting average **private sector** weekly pay was calculated at \$1,010.90, up \$30.73, or 3.1% higher than a year ago. The 12-month percent change in the Consumer Price Index for All Urban Consumers (CPI-U, U.S. City Average, not seasonally adjusted) in November 2015 was 0.5%. Information for the manufacturing production workweek and earnings can be found in the table section of this release under the "Hours and Earnings" data category. *Current all-employee private sector hours and earnings estimates can be volatile due to fluctuating sample responses.*

Labor Force Data (residential household survey)

Connecticut's November 2015 unemployment rate was calculated at **5.1%**, seasonally adjusted. This is unchanged from the revised October 2015 unemployment rate, but down one and two-tenths of a percentage point from the November 2014 unemployment rate of 6.3%. The US unemployment rate is 5.0% for November. Connecticut's unemployment rate has not been this low since March 2008 (5.1%), where the unemployment rate was holding just before rising at the start of the Great Recession March 2008 employment decline in the state. While Connecticut's unemployment rate continues to benefit from monthly drops in the number of the state's unemployed (-423, -0.4%) to 96,487 last month, it has also been experiencing a declining labor force for six straight months after peaking in May 2015 at 1,921,726 – which was a new state record high.*

Unemployment: Based on the Local Area Unemployment Statistics model (LAUS - a statistical model using CPS – the Current Population Survey residential survey data), the number of Connecticut unemployed, seasonally adjusted, declined by 423 (-0.4%) over the month to 96,487 in November 2015. The decline in the number of the state's unemployed residents since November 2014 (-23,200, -19.4%) is considered statistically significant as is the over-the-year one and two-tenths percentage point drop in the state's unemployment rate (-1.2% from 6.3%). The US unemployment rate has declined by eight-tenths since November 2014 from 5.8%.

The November 2015 seasonally adjusted average weekly initial unemployment claims for first-time Connecticut filers declined by 171 claimants (-4.6%) to 3,528, a new employment recovery low, and were down by 830 claims

(-19.0%) from the November 2014 level of 4,358. One must go back to December 2000 (3,138) to find a lower level of initial unemployment claims for first-time filers in the state.

*The nonfarm employment estimate, derived from a survey of businesses, is a measure of jobs in the state; the unemployment rate and labor force estimates, are based on a household survey, and measure the work status of people who live in Connecticut. Overall, as the national and state economies recover, volatility in monthly numbers can be expected. **Job and employment estimates are best understood in the context of their movement over several months rather than observed changes in a single month's value.***

** Consistent labor force estimates are available since 1976, and the May 2015 labor force was the largest recorded for the State of Connecticut in that time. Other data suggest that the labor force prior to 1976 was even smaller, so the May 2015 level was likely an all-time high.*

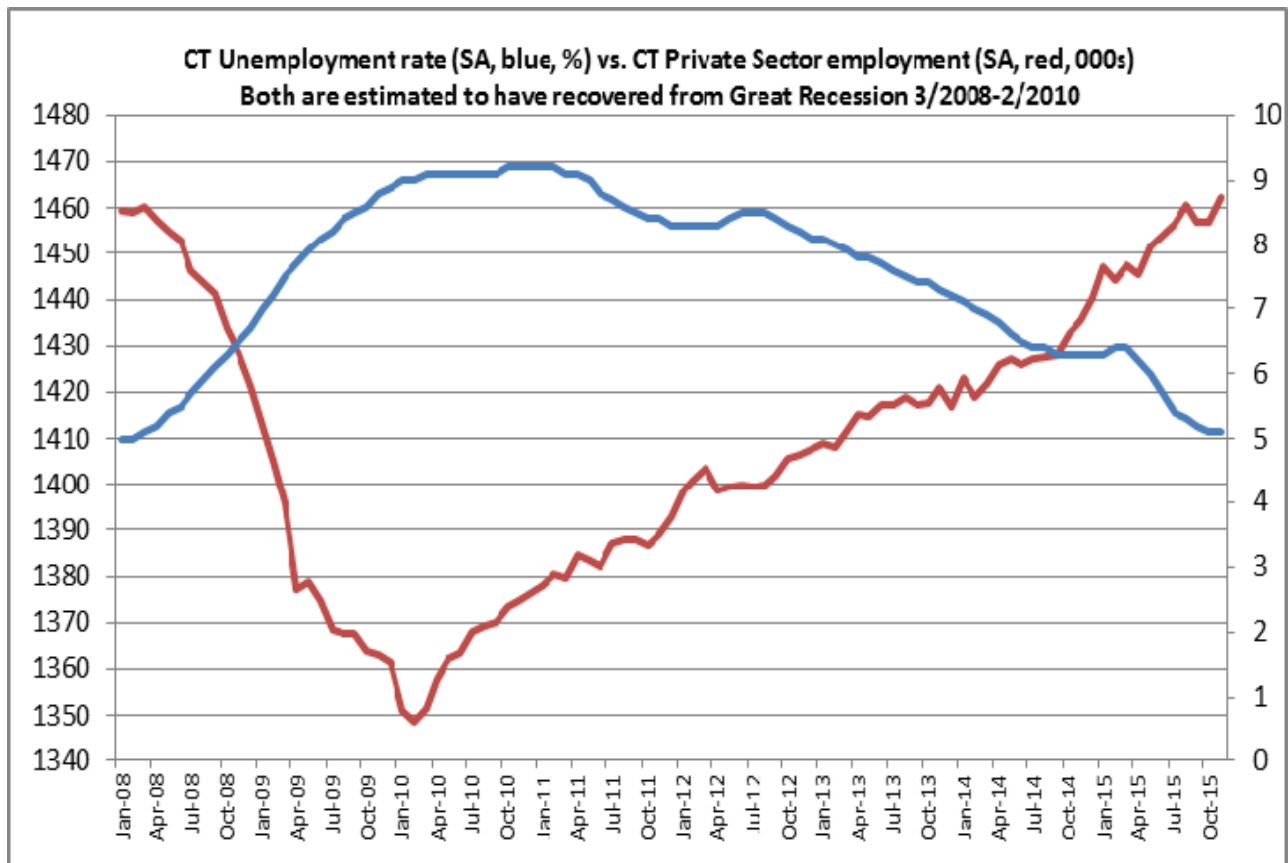
Next Connecticut Labor Situation release: Monday, January 25, 2016 (December 2015 data)

Contact: Communications Office

(860) 263-6535

12-17-15

Labor market information is available on the Internet at www.ctdol.state.ct.us/lmi
 200 Folly Brook Boulevard, Wethersfield, CT 06109-1114 - www.ct.gov/dol
An Equal Opportunity/Affirmative Action Employer



NONFARM EMPLOYMENT

Jobs - by Place of Work

CONNECTICUT AND THE UNITED STATES - Seasonally Adjusted

	November 2015 P	October 2015 R	September 2015	August 2015	November 2014	Over Month Change	Over Month Rate	Over Year Change	Over Year Rate
CONNECTICUT	1,699,700	1,694,600	1,696,300	1,701,100	1,672,900	5,100	0.3%	26,800	1.6%
Total Private	1,462,200	1,457,000	1,456,900	1,460,800	1,435,500	5,200	0.4%	26,700	1.9%
Goods Producing Industries									
Mining	600	600	600	500	600	0	0.0%	0	0.0%
Construction	57,500	57,100	57,300	58,800	55,700	400	0.7%	1,800	3.2%
Manufacturing	161,800	161,000	161,800	162,000	158,500	800	0.5%	3,300	2.1%
Durable Goods	126,000	125,400	126,200	126,100	123,000	600	0.5%	3,000	2.4%
Nondurable Goods	35,800	35,600	35,600	35,900	35,500	200	0.6%	300	0.8%
Service Providing Industries									
Trade, Transportation & Utilities	308,000	306,900	305,900	307,500	303,700	1,100	0.4%	4,300	1.4%
Wholesale	63,500	63,000	62,800	63,200	62,700	500	0.8%	800	1.3%
Retail	190,200	190,100	189,300	190,600	187,900	100	0.1%	2,300	1.2%
Transp, Warehousing & Utilities	54,300	53,800	53,800	53,700	53,100	500	0.9%	1,200	2.3%
Information	31,800	32,200	31,500	31,700	31,200	-400	-1.2%	600	1.9%
Financial Activities	130,700	130,700	130,700	130,600	128,400	0	0.0%	2,300	1.8%
Finance & Insurance	110,700	110,900	110,800	110,700	109,000	-200	-0.2%	1,700	1.6%
Real Estate, Rental & Leasing	20,000	19,800	19,900	19,900	19,400	200	1.0%	600	3.1%
Professional & Business Services	217,000	216,000	216,600	217,500	213,800	1,000	0.5%	3,200	1.5%
Prof, Scientific & Tech Services	96,700	95,000	95,700	95,800	95,900	1,700	1.8%	800	0.8%
Management of Companies	30,000	30,000	29,900	29,800	30,600	0	0.0%	-600	-2.0%
Admn & Support & Waste Mgt Serv	90,300	91,000	91,000	91,900	87,300	-700	-0.8%	3,000	3.4%
Educational & Health Services	333,200	332,700	332,000	333,500	327,600	500	0.2%	5,600	1.7%
Educational Services	64,300	64,300	63,900	64,900	63,500	0	0.0%	800	1.3%
Health Care & Social Assistance	268,900	268,400	268,100	268,600	264,100	500	0.2%	4,800	1.8%
Leisure and Hospitality	159,400	157,900	157,500	155,100	153,100	1,500	0.9%	6,300	4.1%
Arts, Entertainment & Recreation	28,700	28,400	28,100	26,900	27,300	300	1.1%	1,400	5.1%
Accommodation & Food Services	130,700	129,500	129,400	128,200	125,800	1,200	0.9%	4,900	3.9%
Other Services	62,200	61,900	63,000	63,600	62,900	300	0.5%	-700	-1.1%
Government**	237,500	237,600	239,400	240,300	237,400	-100	0.0%	100	0.0%
UNITED STATES	142,900,000	142,689,000	142,391,000	142,246,000	140,263,000	211,000	0.1%	2,637,000	1.9%

LABOR MARKET AREAS (LMA)

Labor Market Area employment estimates are made independently of Statewide estimates.

Seasonally Adjusted data	November 2015 P	October 2015 R	September 2015	August 2015	November 2014	Over Month Change	Over Month Rate	Over Year Change	Over Year Rate
Bridgeport-Stamford-Norwalk	418,100	415,800	414,200	413,900	409,900	2,300	0.6%	8,200	2.0%
Hartford	578,000	574,500	574,700	576,900	566,600	3,500	0.6%	11,400	2.0%
New Haven	282,300	281,000	282,100	282,900	280,300	1,300	0.5%	2,000	0.7%
Norwich-New London-Westerly	127,600	127,300	127,600	127,000	128,100	300	0.2%	-500	-0.4%
Danbury - Not Seasonally Adjusted	79,700	78,900	78,400	77,600	79,600	800	1.0%	100	0.1%
Waterbury - Not Seasonally Adjusted	69,000	68,200	68,000	67,800	68,800	800	1.2%	200	0.3%
<i>Not Seasonally Adjusted data (Non-Classified Areas, State estimated not BLS)</i>									
Enfield	46,300	46,000	45,700	45,700	45,600	300	0.7%	700	1.5%
Torrington-Northwest	34,000	34,200	34,600	34,700	33,800	-200	-0.6%	200	0.6%
Danielson-Northeast	27,800	27,600	27,300	27,500	27,700	200	0.7%	100	0.4%

* Less than 0.05% ** Includes Native American tribal government employment

P = Preliminary

R = Revised

Starting with March, 2011, our monthly statewide and major LMA nonfarm job estimates have been taken over by the US Department of Labor Bureau of Labor Statistics. This is the final phase of transition in this program, which began in 2008. As a result of changes in the estimation procedures, you are likely to see more variability in month-to-month estimates of job counts. Caution should be used in interpreting any single month's estimate. The data are best interpreted to identify trends and cycles over several months and quarters. If you have any questions about these changes, please email us at: dol.lmi@ct.gov. Danbury and Waterbury LMA's are now not seasonally adjusted.

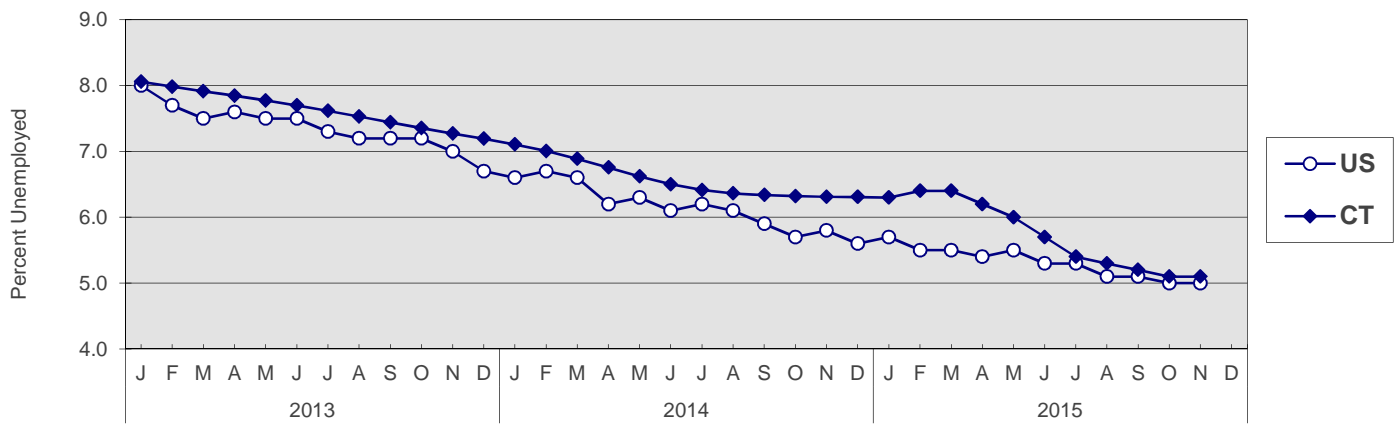
UNEMPLOYMENT

Persons Unemployed - by Place of Residence

CONNECTICUT AND THE UNITED STATES - Seasonally Adjusted

	November 2015 P		November 2014 R		Change		October 2015 R	
	Number	Rate	Number	Rate	Number	Points	Number	Rate
CONNECTICUT								
Unemployed	96,500	5.1	119,700	6.3	-23,200	-1.2	96,900	5.1
Labor Force	1,893,100		1,896,500		-3,400		1,895,900	
UNITED STATES								
Unemployed	7,937,000	5.0	9,071,000	5.8	-1,134,000	-0.8	7,908,000	5.0
Labor Force	157,301,000		156,402,000		899,000		157,028,000	

U.S. AND CONNECTICUT UNEMPLOYMENT RATES - Seasonally Adjusted
2013 - 2015



LABOR MARKET AREAS - Not Seasonally Adjusted

	November 2015 P		November 2014 R		Change		October 2015 R	
	Number	Rate	Number	Rate	Number	Points	Number	Rate
Bridgeport-Stamford								
Danbury								
Danielson-Norwalk								
Worcester NECTA								
Hampton LMA								
Enfield								
Hartford								
New Haven								
Norwich-New Britain								
Torrington-Norwalk								
Torrington N								
Litchfield								
Waterbury								
CONNECTICUT	90,700	4.8	114,300	6.0	-23,600	-1.2	91,400	4.8
UNITED STATES	7,573,000	4.8	8,630,000	5.5	-1,057,000	-0.7	7,597,000	4.8

Release of the November 2015 sub-state labor force data is restricted by the U.S. Bureau of Labor Statistics until Friday, December 18, 2015.

An updated *Connecticut Labor Situation* with these data will be available on our website at that time at:

<http://www1.ctdol.state.ct.us/lmi/laborsit.pdf>

P = Preliminary

R = Revised

Labor force data included in this publication are developed in cooperation with the U.S. Department of Labor, Bureau of Labor Statistics.

* Worcester NECTA, CT part and Hampton LMA are combined ** Torrington Metropolitan NECTA and Litchfield LMA are combined

UNEMPLOYMENT RATES

Not Seasonally Adjusted

Release of the November 2015 sub-state labor force data is restricted by the U.S. Bureau of Labor Statistics until Friday, December 18, 2015.

An updated *Connecticut Labor Situation* with these data will be available on our website at that time at:

<http://www1.ctdol.state.ct.us/lmi/laborsit.pdf>.

HOURS AND EARNINGS

CONNECTICUT Statewide - Not Seasonally Adjusted

	Average Weekly Earnings				Average Weekly Hours				Average Hourly Earnings			
	Nov. 2015 P	Nov. 2014	Change over Yr.	Oct. 2015 R	Nov. 2015 P	Nov. 2014	Change over Yr.	Oct. 2015 R	Nov. 2015 P	Nov. 2014	Change over Yr.	Oct. 2015 R
Private Industry All Employees	\$1,010.90	\$980.17	\$30.73	\$992.80	33.9	34.2	-0.3	33.7	\$29.82	\$28.66	\$1.16	\$29.46
Manufacturing*												
Production Workers	\$1,126.18	\$983.66	\$142.52	\$1,071.63	42.1	41.4	0.7	40.7	\$26.75	\$23.76	\$2.99	\$26.33

* Production worker data have been impacted by the loss of a large, high-paying manufacturer from the monthly sample.

P = Preliminary

R = Revised

Hours and earnings are also developed for the state's major industry sectors and Labor Market Areas. They can be found on our website at: www.ctdol.state.ct.us/lmi.

TRENDS

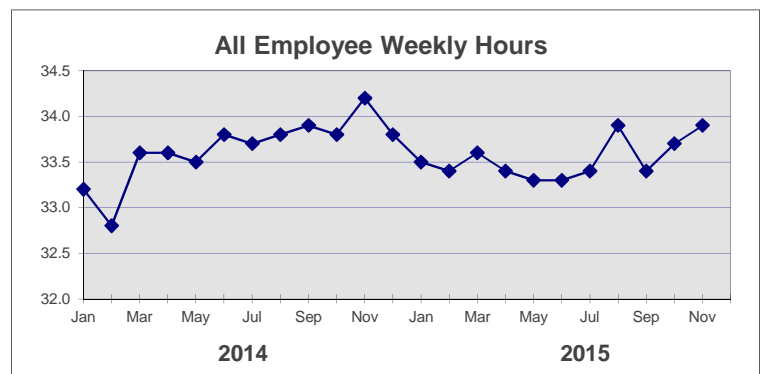
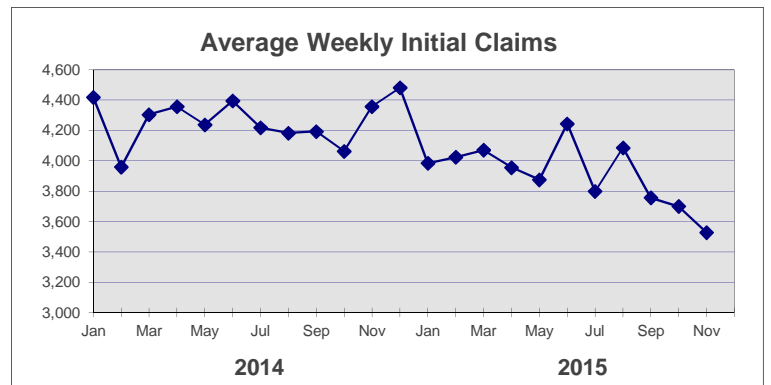
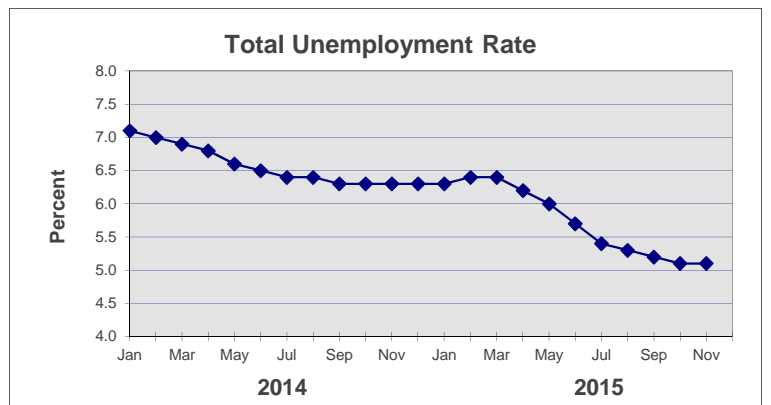
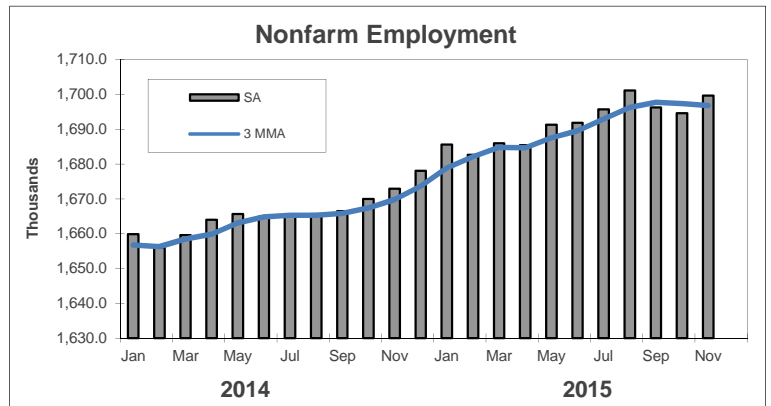
Seasonally Adjusted

	Nonfarm Employment (000s)	Total Unemployment Rate
2014		
Jan	1,659.9	7.1
Feb	1,656.1	7.0
Mar	1,659.6	6.9
Apr	1,664.0	6.8
May	1,665.7	6.6
Jun	1,664.9	6.5
Jul	1,665.4	6.4
Aug	1,665.7	6.4
Sep	1,666.5	6.3
Oct	1,670.0	6.3
Nov	1,672.9	6.3
Dec	1,678.1	6.3

2015		
Jan	1,685.6	6.3
Feb	1,682.7	6.4
Mar	1,686.0	6.4
Apr	1,685.4	6.2
May	1,691.3	6.0
Jun	1,691.9	5.7
Jul	1,695.7	5.4
Aug	1,701.1	5.3
Sep	1,696.3	5.2
Oct	1,694.6 R	5.1 R
Nov	1,699.7 P	5.1 P
Dec		

	Avg Weekly Initial Claims	All Employee Weekly Hours*
2014		
Jan	4,418	33.2
Feb	3,959	32.8
Mar	4,306	33.6
Apr	4,357	33.6
May	4,238	33.5
Jun	4,395	33.8
Jul	4,218	33.7
Aug	4,183	33.8
Sep	4,194	33.9
Oct	4,063	33.8
Nov	4,358	34.2
Dec	4,481	33.8

2015		
Jan	3,984	33.5
Feb	4,024	33.4
Mar	4,070	33.6
Apr	3,956	33.4
May	3,875	33.3
Jun	4,244	33.3
Jul	3,799	33.4
Aug	4,086	33.9
Sep	3,756	33.4
Oct	3,699	33.7 R
Nov	3,528	33.9 P
Dec		



* Not seasonally adjusted

P = Preliminary

R = Revised

** Labor-management dispute