



LABOR SITUATION

Office of Research
Sharon M. Palmer, Commissioner

FOR IMMEDIATE RELEASE

October 2015 Data
CT Unemployment Rate = 5.1%
US Unemployment Rate = 5.0%

State's unemployment rate declines to 5.1%; jobs fall 2,200

WETHERSFIELD, November 19, 2015 – October's preliminary nonfarm job estimate developed from the U.S. Bureau of Labor Statistics (BLS) business survey shows Connecticut jobs declined by 2,200 (-0.13%) last month to a level of 1,694,100, seasonally adjusted. This is the second monthly job loss in a row and the fourth monthly state nonfarm jobs decline out of the first ten months of this year. The state has still increased nonfarm employment by 24,100 jobs (1.44%, 2,410 jobs per month) since October 2014. The September 2015's estimated nonfarm employment loss of 7,600 (-0.45%) positions for the state was revised higher to a 4,800 (-0.28%) job decline - a substantial 2,800 upward employment revision for the prior month.

Connecticut's October 2015 unemployment rate, estimated utilizing residential survey data from the Current Population Survey (CPS), was calculated at 5.1%, seasonally adjusted. This is down one-tenth of a percentage point from the revised August 2015 figure of 5.2%, and down one and two-tenths of a percentage point from the October 2014 unemployment rate of 6.3%. Connecticut's unemployment rate has not been this low since March 2008 (5.1%), which was the start of the Great Recession employment downturn in our state.

"For the second month in a row Connecticut has shown job losses, possibly indicating a softening of the strong growth we have seen through August of this year," said Andy Condon, Director of the Office of Research. "However, our annual employment growth rate continues at a strong pace."

Nonfarm Jobs Detail (business establishment survey)

Preliminary nonfarm employment estimates for October 2015 indicate Connecticut jobs fell by 2,200 (-0.13%), seasonally adjusted, with five major industry *supersectors* gaining jobs, and five declining. From October 2014, Connecticut's annualized nonfarm job gains are now totaling 24,100 (1.44%) with only the **other services** *supersector* (-1,100, -1.7%) losing jobs over the year. Year-to-date employment figures through October 2015 show Connecticut adding 16,000 net nonfarm positions, compared to 17,000 in the first ten months of 2014.

Connecticut's **private sector employment** declined only by 400 jobs (-0.03%) in October and still has added 23,800 positions (1.66%, about 1,983 jobs per month) over the year to a level of 1,456,500, seasonally adjusted. The **government** *supersector* was the largest contributor to losses in October (-1,800, -0.75%) at 237,600, but continues to show a small increase over the year (300, 0.13%).

The **trade, transportation & utilities** *supersector* (1,000, 0.3%) was the largest job gainer and the retail trade portion (700, 0.4%) was the strongest contributor. The small **information** *supersector* (800, 2.5%) produced the second biggest gain. This was followed by **education and health services** (400, 0.1%) which added some jobs back after a loss in September. The **financial activities** (200, 0.2%) and **leisure and hospitality** (200, 0.1%) *supersectors* both contributed 200 jobs in October.

The **government** (-1,800, -0.8%) *supersector* had the largest loss of the five declining major industry *supersectors* in October, representing more than 80% of the total monthly job decline. All three **government** subcomponents, federal (-100, -0.6%), state (-600, -0.9%), and especially local government (-1,100, -0.7%) were lower. The **professional and business services** (-1,100, -0.5%) *supersector* also posted significant losses. In this *supersector*, the scientific and technical services (-900, -0.9%) component was the weak spot. The **other services** *supersector* (-900, -1.4%) was next in magnitude. The **manufacturing** *supersector* (-800, -0.5%) was also lower in October, with durable goods manufacturing (-800, -0.6%) accounting for all of the monthly job loss, while nondurable goods producers were unchanged. The combined **construction and mining** (-200, -0.3%) *supersector* also lost positions last month.

Recession recovery: Connecticut has now recovered 100,100 positions, or 84.1% of the 119,000 seasonally adjusted total nonfarm jobs that were lost in the state during the March 2008 - February 2010 employment downturn. Connecticut's jobs recovery is now 68 months old and is averaging about 1,472 new jobs per month since February 2010. There have been 46 monthly job gains (67.6%), 21 monthly job losses, and one unchanged month (November 2010) during this period. The **private sector** has recovered employment at a faster clip, with approximately 1,584 jobs per month, and has now regained 107,700 (96.5%) of the 111,600 private sector positions that were lost. The state needs to reach the 1,713,000 job level to enter a full nonfarm employment expansionary phase. This will require an additional 18,900 nonfarm jobs. A total of just 3,900 more private sector positions are needed to have a fully recovered private sector in the state.

Labor Market Areas (LMAs): The October 2015 preliminary nonfarm job statistics indicate that two of the four major Connecticut Labor Market Areas that are *seasonally adjusted* by the Bureau of Labor Statistics increased jobs, while the two other state LMAs lost positions. The **Bridgeport-Stamford-Norwalk LMA** (1,400, 0.3%, 415,600) and the **Hartford-West Hartford-East Hartford LMA** (300, 0.1%, 575,000), the state's two largest labor markets, posted positive job growth in October, while the **New Haven LMA** (-1,400, -0.5%, 280,700) and the **Norwich-New London-Westerly LMA** (-200, -0.2%, 127,400, includes Westerly and Hopkinton, RI, based on commuter patterns) both lost jobs last month. The **Hartford-West Hartford-East Hartford LMA** (8,900, 1.6%), still leads all major labor markets in yearly job growth magnitude while the **Bridgeport-Stamford-Norwalk LMA** (6,900, 1.7%) leads in percentage terms. *Note: The six major Connecticut LMAs are estimated independently from the statewide data by the BLS and cover more than 90% of the nonfarm employment in the state. Thus estimates will not fully sum to the statewide total.*

Hours and Earnings: The **private sector** workweek, not seasonally adjusted, averaged 33.7 hours in October 2015, down one-tenth of an hour from the same month a year ago (33.8, -0.3). Average hourly earnings at \$29.47, not seasonally adjusted, were up \$1.15, or 4.1%, from the October 2014 estimate. The resulting average **private sector** weekly pay was calculated at \$993.14, up \$35.92, or 3.8% higher than a year ago. The 12-month percent change in the Consumer Price Index for All Urban Consumers (CPI-U, U.S. City Average, not seasonally adjusted) in October 2015 was 0.2%. Information for the manufacturing production workweek and earnings can be found in the table section of this release under the "Hours and Earnings" data category. *Current all-employee private sector hours and earnings estimates can be volatile due to fluctuating sample responses.*

Labor Force Data (residential household survey)

Connecticut's October 2015 unemployment rate was calculated at **5.1%**, seasonally adjusted. This is down one-tenth of a percentage point from the revised September 2015 unemployment rate of 5.2% and down one and two-tenths of a percentage point from the October 2014 unemployment rate of 6.3%. Connecticut's unemployment rate has not been this low since March 2008 at the start of the Great Recession. Notwithstanding the recent monthly unemployment rate, declines have been occurring on a falling labor force (-3,223, -0.2%) for the last five months since the state's labor force peaked at an all-time high in May 2015 (1,921,726*). While Connecticut's labor force is higher by 2,619 (0.1%) workers over the year, the level is now below 1.9 million (1,895,895). Even so, the drop in the labor force, since peaking in May of this year (-25,831), has come more from the decline in the number of the state's unemployed (-18,104) rather than the employment component (-7,727) on the residential survey (roughly 70%-30%).

Unemployment: Based on the Local Area Unemployment Statistics model (LAUS - a statistical model using CPS residential survey data), the number of Connecticut unemployed, seasonally adjusted, declined by 1,596 (-1.6%) over the month to 96,975 in October 2015. The number of unemployed state residents has fallen by 22,702 (-19.0%) since October 2014, which is considered statistically significant.

The October 2015 seasonally adjusted average weekly initial unemployment claims for first-time Connecticut filers declined by 57 claimants (-1.5%) to 3,699, a new employment recovery low, and were down by 364 claims (-9.0%) from the October 2014 level of 4,063. One needs to go back to December 2000 (3,138) to find a lower level of initial unemployment claims for first-time filers in the state – almost 15 years ago.

*The nonfarm employment estimate, derived from a survey of businesses, is a measure of jobs in the state; the unemployment rate and labor force estimates, are based on a household survey, and measure the work status of people who live in Connecticut. Overall, as the national and state economies recover, volatility in monthly numbers can be expected. **Job and employment estimates are best understood in the context of their movement over several months rather than observed changes in a single month's value.***

** Consistent labor force estimates are available since 1976, and the May 2015 labor force was the largest recorded for the State of Connecticut in that time. Other data suggest that the labor force prior to 1976 was even smaller, so the May 2015 level was likely an all-time high.*

Next Connecticut Labor Situation release: Thursday, December 17, 2015 (November 2015 data)

Contact: Communications Office

(860) 263-6535

11-19-15

Labor market information is available on the Internet at www.ctdol.state.ct.us/lmi
200 Folly Brook Boulevard, Wethersfield, CT 06109-1114 - www.ct.gov/dol
An Equal Opportunity/Affirmative Action Employer

NONFARM EMPLOYMENT

Jobs - by Place of Work

CONNECTICUT AND THE UNITED STATES - Seasonally Adjusted

	October 2015 P	September 2015 R	August 2015	July 2015	October 2014	Over Month Change	Over Month Rate	Over Year Change	Over Year Rate
CONNECTICUT	1,694,100	1,696,300	1,701,100	1,695,700	1,670,000	-2,200	-0.1%	24,100	1.4%
Total Private	1,456,500	1,456,900	1,460,800	1,456,700	1,432,700	-400	0.0%	23,800	1.7%
Goods Producing Industries									
Mining	600	600	500	500	600	0	0.0%	0	0.0%
Construction	57,100	57,300	58,800	58,600	56,200	-200	-0.3%	900	1.6%
Manufacturing	161,000	161,800	162,000	161,200	158,800	-800	-0.5%	2,200	1.4%
Durable Goods	125,400	126,200	126,100	125,600	123,300	-800	-0.6%	2,100	1.7%
Nondurable Goods	35,600	35,600	35,900	35,600	35,500	0	0.0%	100	0.3%
Service Providing Industries									
Trade, Transportation & Utilities	306,900	305,900	307,500	306,600	302,000	1,000	0.3%	4,900	1.6%
Wholesale	63,000	62,800	63,200	62,900	62,800	200	0.3%	200	0.3%
Retail	190,000	189,300	190,600	190,600	186,500	700	0.4%	3,500	1.9%
Transp, Warehousing & Utilities	53,900	53,800	53,700	53,100	52,700	100	0.2%	1,200	2.3%
Information	32,300	31,500	31,700	31,700	31,500	800	2.5%	800	2.5%
Financial Activities	130,900	130,700	130,600	131,100	128,300	200	0.2%	2,600	2.0%
Finance & Insurance	111,000	110,800	110,700	111,100	109,000	200	0.2%	2,000	1.8%
Real Estate, Rental & Leasing	19,900	19,900	19,900	20,000	19,300	0	0.0%	600	3.1%
Professional & Business Services	215,500	216,600	217,500	217,100	212,300	-1,100	-0.5%	3,200	1.5%
Prof, Scientific & Tech Services	94,800	95,700	95,800	95,900	95,600	-900	-0.9%	-800	-0.8%
Management of Companies	29,900	29,900	29,800	29,800	30,400	0	0.0%	-500	-1.6%
Admn & Support & Waste Mgt Serv	90,800	91,000	91,900	91,400	86,300	-200	-0.2%	4,500	5.2%
Educational & Health Services	332,400	332,000	333,500	330,400	327,100	400	0.1%	5,300	1.6%
Educational Services	64,100	63,900	64,900	63,400	63,400	200	0.3%	700	1.1%
Health Care & Social Assistance	268,300	268,100	268,600	267,000	263,700	200	0.1%	4,600	1.7%
Leisure and Hospitality	157,700	157,500	155,100	155,800	152,700	200	0.1%	5,000	3.3%
Arts, Entertainment & Recreation	28,300	28,100	26,900	27,700	26,800	200	0.7%	1,500	5.6%
Accommodation & Food Services	129,400	129,400	128,200	128,100	125,900	0	0.0%	3,500	2.8%
Other Services	62,100	63,000	63,600	63,700	63,200	-900	-1.4%	-1,100	-1.7%
Government**	237,600	239,400	240,300	239,000	237,300	-1,800	-0.8%	300	0.1%
UNITED STATES	142,654,000	142,383,000	142,246,000	142,093,000	139,840,000	271,000	0.2%	2,814,000	2.0%

LABOR MARKET AREAS (LMA)

Labor Market Area employment estimates are made independently of Statewide estimates.

Seasonally Adjusted data	October 2015 P	September 2015 R	August 2015	July 2015	October 2014	Over Month Change	Over Month Rate	Over Year Change	Over Year Rate
Bridgeport-Stamford-Norwalk	415,600	414,200	413,900	413,500	408,700	1,400	0.3%	6,900	1.7%
Hartford	575,000	574,700	576,900	578,800	566,100	300	0.1%	8,900	1.6%
New Haven	280,700	282,100	282,900	281,200	279,300	-1,400	-0.5%	1,400	0.5%
Norwich-New London-Westerly	127,400	127,600	127,000	127,300	127,700	-200	-0.2%	-300	-0.2%
Danbury - Not Seasonally Adjusted	79,000	78,400	77,600	78,100	79,000	600	0.8%	0	0.0%
Waterbury - Not Seasonally Adjusted	67,800	68,000	67,800	68,500	67,900	-200	-0.3%	-100	-0.1%
<i>Not Seasonally Adjusted data (Non-Classified Areas, State estimated not BLS)</i>									
Enfield	46,000	45,700	45,700	45,600	45,300	300	0.7%	700	1.5%
Torrington-Northwest	34,200	34,600	34,700	35,000	34,100	-400	-1.2%	100	0.3%
Danielson-Northeast	27,500	27,300	27,500	27,100	27,500	200	0.7%	0	0.0%

* Less than 0.05%

** Includes Native American tribal government employment

P = Preliminary

R = Revised

Starting with March, 2011, our monthly statewide and major LMA nonfarm job estimates have been taken over by the US Department of Labor Bureau of Labor Statistics. This is the final phase of transition in this program, which began in 2008. As a result of changes in the estimation procedures, you are likely to see more variability in month-to-month estimates of job counts. Caution should be used in interpreting any single month's estimate. The data are best interpreted to identify trends and cycles over several months and quarters. If you have any questions about these changes, please email us at: dol.lmi@ct.gov. Danbury and Waterbury LMA's are now not seasonally adjusted.

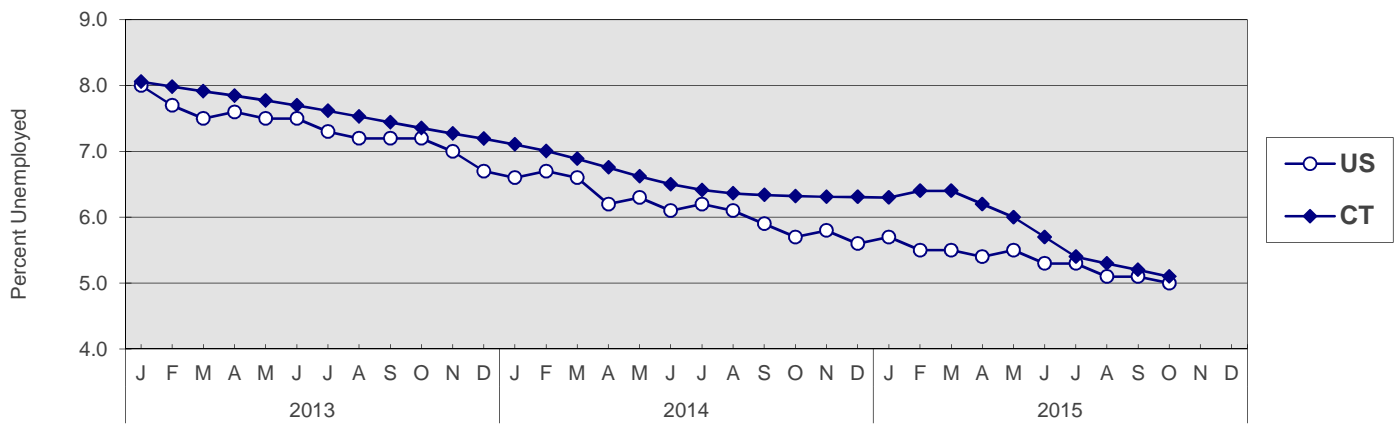
UNEMPLOYMENT

Persons Unemployed - by Place of Residence

CONNECTICUT AND THE UNITED STATES - Seasonally Adjusted

	October 2015 P		October 2014 R		Change		September 2015 R	
	Number	Rate	Number	Rate	Number	Points	Number	Rate
CONNECTICUT								
Unemployed	97,000	5.1	119,700	6.3	-22,700	-1.2	98,600	5.2
Labor Force	1,895,900		1,893,300		2,600		1,899,100	
UNITED STATES								
Unemployed	7,908,000	5.0	8,983,000	5.7	-1,075,000	-0.7	7,915,000	5.1
Labor Force	157,028,000		156,243,000		785,000		156,715,000	

U.S. AND CONNECTICUT UNEMPLOYMENT RATES - Seasonally Adjusted 2013 - 2015



LABOR MARKET AREAS - Not Seasonally Adjusted

	October 2015 P		October 2014 R		Change		September 2015 R	
	Number	Rate	Number	Rate	Number	Points	Number	Rate
Bridgeport-Stamford								
Danbury								
Danielson-Norwalk								
Worcester NECTA								
Hampton LMA								
Enfield								
Hartford								
New Haven								
Norwich-New Britain								
Torrington-Norwalk								
Torrington N. Litchfield								
Waterbury								
<p>Release of the October 2015 sub-state labor force data is restricted by the U.S. Bureau of Labor Statistics until Friday, November 20, 2015. An updated <i>Connecticut Labor Situation</i> with these data will be available on our website at that time at: http://www1.ctdol.state.ct.us/lmi/laborsit.pdf.</p>								
CONNECTICUT	91,600	4.8	115,800	6.1	-24,200	-1.3	95,700	5.1
UNITED STATES	7,597,000	4.8	8,680,000	5.5	-1,083,000	-0.7	7,628,000	4.9

P = Preliminary

R = Revised

Labor force data included in this publication are developed in cooperation with the U.S. Department of Labor, Bureau of Labor Statistics.

* Worcester NECTA, CT part and Hampton LMA are combined ** Torrington Metropolitan NECTA and Litchfield LMA are combined

UNEMPLOYMENT RATES

Not Seasonally Adjusted

Release of the October 2015 sub-state labor force data is restricted by the U.S. Bureau of Labor Statistics until Friday, November 20, 2015.

An updated *Connecticut Labor Situation* with these data will be available on our website at that time at:

<http://www1.ctdol.state.ct.us/lmi/laborsit.pdf>.

HOURS AND EARNINGS

CONNECTICUT Statewide - Not Seasonally Adjusted

	Average Weekly Earnings				Average Weekly Hours				Average Hourly Earnings			
	Oct. 2015 P	Oct. 2014	Change over Yr.	Sep. 2015 R	Oct. 2015 P	Oct. 2014	Change over Yr.	Sep. 2015 R	Oct. 2015 P	Oct. 2014	Change over Yr.	Sep. 2015 R
Private Industry All Employees	\$993.14	\$957.22	\$35.92	\$984.97	33.7	33.8	-0.1	33.4	\$29.47	\$28.32	\$1.15	\$29.49
Manufacturing*												
Production Workers	\$1,072.45	\$942.53	\$129.92	\$1,052.22	40.7	40.4	0.3	40.1	\$26.35	\$23.33	\$3.02	\$26.24

* Production worker data have been impacted by the loss of a large, high-paying manufacturer from the monthly sample.

P = Preliminary

R = Revised

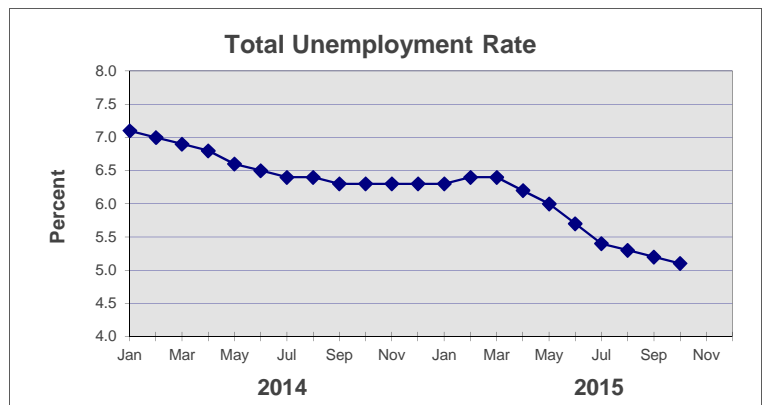
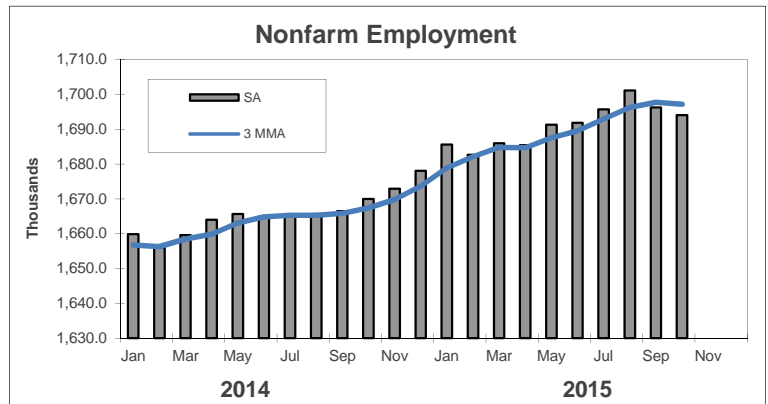
Hours and earnings are also developed for the state's major industry sectors and Labor Market Areas. They can be found on our website at: www.ctdol.state.ct.us/lmi.

TRENDS

Seasonally Adjusted

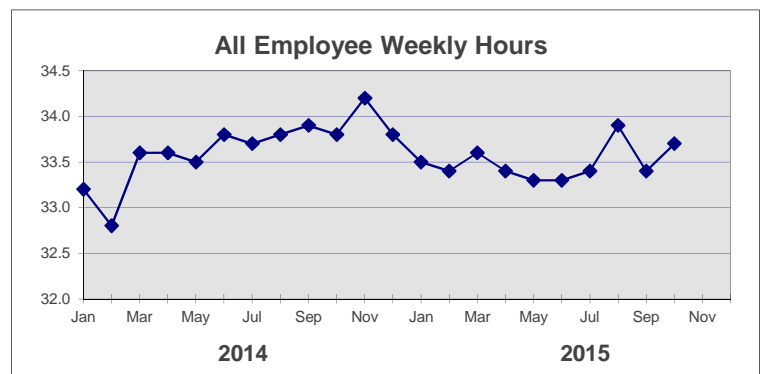
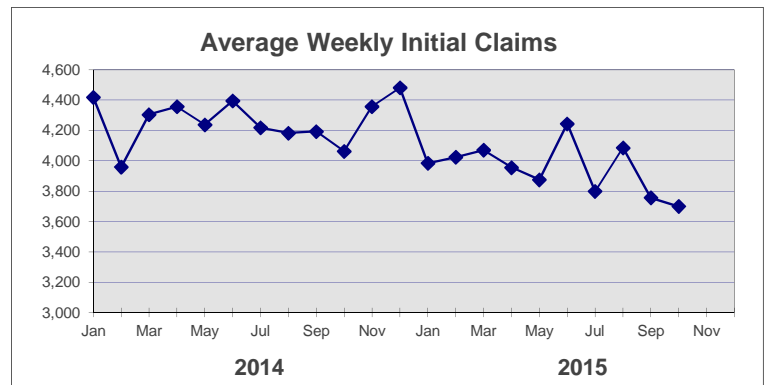
	Nonfarm Employment (000s)	Total Unemployment Rate
2014		
Jan	1,659.9	7.1
Feb	1,656.1	7.0
Mar	1,659.6	6.9
Apr	1,664.0	6.8
May	1,665.7	6.6
Jun	1,664.9	6.5
Jul	1,665.4	6.4
Aug	1,665.7	6.4
Sep	1,666.5	6.3
Oct	1,670.0	6.3
Nov	1,672.9	6.3
Dec	1,678.1	6.3

2015		
Jan	1,685.6	6.3
Feb	1,682.7	6.4
Mar	1,686.0	6.4
Apr	1,685.4	6.2
May	1,691.3	6.0
Jun	1,691.9	5.7
Jul	1,695.7	5.4
Aug	1,701.1	5.3
Sep	1,696.3 R	5.2 R
Oct	1,694.1 P	5.1 P
Nov		
Dec		



	Avg Weekly Initial Claims	All Employee Weekly Hours*
2014		
Jan	4,418	33.2
Feb	3,959	32.8
Mar	4,306	33.6
Apr	4,357	33.6
May	4,238	33.5
Jun	4,395	33.8
Jul	4,218	33.7
Aug	4,183	33.8
Sep	4,194	33.9
Oct	4,063	33.8
Nov	4,358	34.2
Dec	4,481	33.8

2015		
Jan	3,984	33.5
Feb	4,024	33.4
Mar	4,070	33.6
Apr	3,956	33.4
May	3,875	33.3
Jun	4,244	33.3
Jul	3,799	33.4
Aug	4,086	33.9
Sep	3,756	33.4 R
Oct	3,699	33.7 P
Nov		
Dec		



* Not seasonally adjusted

P = Preliminary

R = Revised

** Labor-management dispute