



LABOR SITUATION

Office of Research

FOR IMMEDIATE RELEASE

March 2010 Data

State Gains 3,000 Jobs in March; Unemployment Rate 9.2%

WETHERSFIELD, April 15, 2010 – The state’s nonfarm employment in March was 1,614,500, an increase of 3,000 jobs from the revised February 2010 figure of 1,611,500, the Connecticut Department of Labor announced today. On a seasonally adjusted basis, this is a decrease of 30,600 from the March 2009 total of 1,645,100 jobs.

“We have now seen three months of job gains in Connecticut, possibly one of the best indications we have seen to date that our economy is beginning to take a more positive turn,” noted Labor Statistics Supervisor Salvatore DiPillo. “We saw healthy gains in six of our major industry sectors, including manufacturing and construction – two areas that have suffered heavy losses as a result of the economic downturn. The gain of 3,000 new jobs parallels the growth we are seeing at the national level and gives us hope that this recession may be nearing its end.”

Nonfarm Employment

With job gains in six of Connecticut’s 10 major industry sectors, losses in three, and one sector unchanged, net gains exceeded losses. The biggest employment gain was found in **leisure and hospitality** up 1,400 jobs, closely followed by the **educational and health services** sector, which added 1,300 jobs. Smaller gains occurred in the **manufacturing** sector, up 700; **trade, transportation and utilities**, up 600 jobs; **information**, up 500; and **construction**, up by 400. The **other services** sector experienced the greatest loss of jobs, down 900, followed by **government**, with a loss of 700 jobs, while the **financial activities** sector was off by 300. Employment in the **professional and business** sector was unchanged between February and March. Connecticut’s nonfarm employment is now down 97,000 jobs from its pre-recession peak employment of 1,711,500 in March 2008, a decline of 5.7 percent.

Employment in the **construction** sector was up 400 jobs, for a total of 52,500 jobs in March. The positive trend in recent months is in marked contrast to the large monthly losses of a year or so ago. Still, this sector, which first began losing jobs in November 2007 – well before most other sectors – is currently down by nearly 25 percent since that time.

The **manufacturing** sector also showed positive gains, with 700 new jobs in March, most of these added by **durable goods** industry employers. Employment gains in February and March in this sector have helped to recover those lost in January. Despite the improvement, however, employment in the **manufacturing** sector at 167,500, is down nearly five percent over the year.

The **trade, transportation and utilities** sector gained 600 jobs in March, with jobs now numbering 289,600. Job gains at **retail** establishments more than compensated for losses at **wholesale** and **transportation, warehousing and utilities** places of work. While there were employment losses in all component industries of this sector over the year, those in **retail** were relatively fewer.

Employment in the **information** sector was up 500 in March – representing only the fifth monthly job gain in the past two years. This sector, which includes **publishing industries** including **newspapers**, has experienced job losses since 2000 – well before the current recession began. With 34,300 jobs in March, employment in this sector is down 27 percent from its peak in 2000.

The **educational and health services** sector again added jobs in March, as it has in nine of the past 12 months, to total 309,800. Both **educational services** and **health care and social assistance** have contributed their share of new jobs, adding 1,800 and 6,800 jobs respectively, since last March.

-- more --

The largest gain in March was seen in **leisure and hospitality**, which added 1,400 jobs – bringing total employment to 140,900. Nearly all the gains occurred in the **accommodations and food services** industries. This sector has weathered the recession fairly well in Connecticut and is one of only two sectors to add jobs over the year.

The **financial activities** sector dropped 300 jobs in March, with losses found in **finance and insurance**, as well as **real estate, rental and leasing**. At 135,400 jobs, there are now 4,600 fewer jobs in this sector than one year ago.

The **other services** sector, which includes **repair and maintenance services, personal and laundry services** and **religious, grantmaking, civic, and professional organizations**, shed 900 jobs in March. With employment at 60,100, **other services** is now down by 1,600 jobs, a 2.6 percent drop from a year ago.

Small increases in **federal** and **local government** were offset by a decline in **state government** employment, for a net loss of 700 jobs in the **government** sector. Over the year, employment in **government** is down 5,400, with most of these losses spread between **state** and **local government**.

Employment in **professional and business services**, which includes **temporary help agencies**, remained flat, with March employment at 178,600. In the past year, this sector has seen its jobs trimmed by 6.9 percent.

Labor Market Areas: There were healthy job gains three of the six major Labor Market Areas (LMAs) between February and March, and these far outweighed the losses in the other areas. Jobs were up in the Hartford LMA (+1,800), the Bridgeport-Stamford LMA (+1,700), and the New Haven LMA (+800). The Danbury and Waterbury LMAs lost 400 and 300 jobs, respectively. The Norwich-New London LMA was mostly unchanged over the month.

Hours and Earnings: The workweek for employees in the private sector, not seasonally adjusted, averaged 33.0 hours, which is down 0.1 hours from the March 2009 figure of 33.1 hours. Average hourly earnings at \$27.88, not seasonally adjusted, were down \$0.45 from a year ago at this time when the number was \$28.33. This resulted in an average weekly wage for private sector employees of \$920.04, down \$17.68, which is a decrease of 1.9 percent over the year. Information for the manufacturing production workweek only can be found in the table section of the release under the “Hours and Earnings” data category.

Labor Force Data

Connecticut’s seasonally adjusted labor force was up 2,100 from February 2010, bringing the March total to 1,907,700. This represents an increase of 19,600 people over the year.

Unemployment: Based on the household survey, the estimate of people unemployed, seasonally adjusted, increased in March by 900 to 175,000, while the unemployment rate increased from the February 2010 rate of 9.1 percent to 9.2 percent. This is 0.5 percentage points lower than the national rate of 9.7 percent. In comparison with the state’s unemployment rate of 7.7 percent in March 2009, this month’s unemployment number represents an increase of 1.5 percentage points over the year. The number of people unemployed increased by 28,900 from last year at this time. Average weekly initial unemployment claims in March 2010 for first-time filers increased over the month by 694 to 6,154, but were down 18.1 percent, or 1,356 claims from this time last year.

Unemployment rates and the number of unemployed people, not seasonally adjusted, were up over the year in all of the state’s nine labor market areas. The Danbury LMA had the lowest unemployment rate at 8.1 percent, followed by the Bridgeport-Stamford LMA at 8.5 percent, and the Enfield LMA is now at 8.8 percent. The Waterbury LMA represents the highest unemployment rate at 12.6 percent.

The nonfarm employment estimate, derived from a survey of businesses, is a measure of jobs in the state; the unemployment rate, based on a household survey, is a measure of the work status of people who live in Connecticut.

Contact: Nancy Steffens

(860) 263-6535

4-15-10

Labor market information is available on the Internet at www.ctdol.state.ct.us/lmi
200 Folly Brook Boulevard, Wethersfield, CT 06109-1114 - www.ct.gov/dol
An Equal Opportunity/Affirmative Action Employer

NONFARM EMPLOYMENT

Jobs - by Place of Work

CONNECTICUT AND THE UNITED STATES - Seasonally Adjusted

	Mar. 2010	Feb. 2010	Jan. 2010	Dec. 2009	Mar. 2009	Over Month Change	Over Month Rate	Over Year Change	Over Year Rate
CONNECTICUT	1,614,500	1,611,500	1,611,300	1,608,100	1,645,100	3,000	0.2%	-30,600	-1.9%
Goods Producing Industries									
Construction	52,500	52,100	52,100	52,900	57,100	400	0.8%	-4,600	-8.1%
Manufacturing	167,500	166,800	166,000	168,000	175,800	700	0.4%	-8,300	-4.7%
Durable Goods	128,900	128,300	127,100	129,200	135,400	600	0.5%	-6,500	-4.8%
Nondurable Goods	38,600	38,500	38,900	38,800	40,400	100	0.3%	-1,800	-4.5%
Service Providing Industries									
Trade, Transportation & Utilities	289,600	289,000	288,900	288,400	296,600	600	0.2%	-7,000	-2.4%
Wholesale	62,600	63,000	63,000	63,700	66,200	-400	-0.6%	-3,600	-5.4%
Retail	178,600	177,400	177,600	175,600	179,200	1,200	0.7%	-600	-0.3%
Transp, Warehousing & Utilities	48,400	48,600	48,300	49,100	51,200	-200	-0.4%	-2,800	-5.5%
Information	34,300	33,800	34,600	34,400	35,800	500	1.5%	-1,500	-4.2%
Financial Activities	135,400	135,700	135,500	136,100	140,000	-300	-0.2%	-4,600	-3.3%
Finance & Insurance	116,700	116,800	116,600	117,300	120,500	-100	-0.1%	-3,800	-3.2%
Real Estate, Rental & Leasing	18,700	18,900	18,900	18,800	19,500	-200	-1.1%	-800	-4.1%
Professional & Business Services	178,600	178,600	178,600	180,800	191,900	0	0.0%	-13,300	-6.9%
Prof, Scientific & Tech Services	79,700	78,500	79,500	80,600	89,200	1,200	1.5%	-9,500	-10.7%
Admn & Support & Waste Mgt Serv	73,600	74,300	73,800	74,800	76,100	-700	-0.9%	-2,500	-3.3%
Educational & Health Services	309,800	308,500	307,500	303,900	301,200	1,300	0.4%	8,600	2.9%
Educational Services	59,700	58,900	60,600	58,600	57,900	800	1.4%	1,800	3.1%
Health Care & Social Assistance	250,100	249,600	246,900	245,300	243,300	500	0.2%	6,800	2.8%
Leisure and Hospitality	140,900	139,500	138,800	135,000	133,700	1,400	1.0%	7,200	5.4%
Arts, Entertainment & Recreation	25,800	25,700	25,500	23,600	23,400	100	0.4%	2,400	10.3%
Accommodation & Food Services	115,100	113,800	113,300	111,400	110,300	1,300	1.1%	4,800	4.4%
Other Services	60,100	61,000	62,000	61,800	61,700	-900	-1.5%	-1,600	-2.6%
Government**	245,300	246,000	246,700	246,200	250,700	-700	-0.3%	-5,400	-2.2%
UNITED STATES	129,750,000	129,588,000	129,602,000	129,588,000	132,070,000	162,000	0.1%	-2,320,000	-1.8%

LABOR MARKET AREAS

Labor Market Area employment estimates are made independently of Statewide estimates.

Seasonally Adjusted data	Mar. 2010	Feb. 2010	Jan. 2010	Dec. 2009	Mar. 2009	Over Month Change	Over Month Rate	Over Year Change	Over Year Rate
Bridgeport-Stamford	398,500	396,800	396,500	396,600	403,900	1,700	0.4%	-5,400	-1.3%
Danbury	64,200	64,600	64,600	64,300	66,600	-400	-0.6%	-2,400	-3.6%
Hartford	532,900	531,100	532,100	536,400	544,700	1,800	0.3%	-11,800	-2.2%
New Haven	266,900	266,100	266,700	264,200	268,300	800	0.3%	-1,400	-0.5%
Norwich-New London	131,000	131,100	130,900	130,700	133,200	-100	-0.1%	-2,200	-1.7%
Waterbury	61,000	61,300	61,300	60,800	63,300	-300	-0.5%	-2,300	-3.6%
Not Seasonally Adjusted data									
Enfield	45,500	45,300	45,800	45,800	46,400	200	0.4%	-900	-1.9%
Torrington	33,900	33,800	34,400	35,000	34,800	100	0.3%	-900	-2.6%
Willimantic-Danielson	35,600	35,500	35,800	35,900	35,600	100	0.3%	0	0.0%

* Less than 0.05% ** Includes Native American tribal government employment

Data in this publication are benchmarked to March 2009. Current month's nonfarm employment data are preliminary, previous months' data are revised. Nonfarm employment, hours and earnings, and labor force data included in this publication are developed in cooperation with the U.S. Department of Labor, Bureau of Labor Statistics.

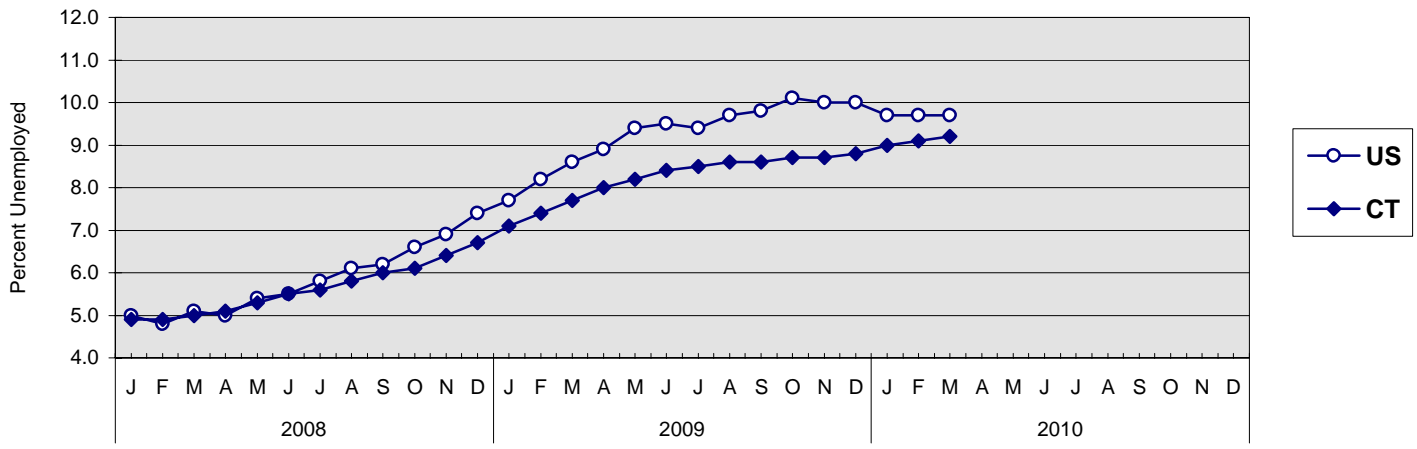
UNEMPLOYMENT

Persons Unemployed - by Place of Residence

CONNECTICUT AND THE UNITED STATES - Seasonally Adjusted

	March 2010		March 2009		Change		February 2010	
	Number	Rate	Number	Rate	Number	Points	Number	Rate
CONNECTICUT								
Unemployed	175,000	9.2	146,100	7.7	28,900	1.5	174,100	9.1
Labor Force	1,907,700		1,888,100		19,600		1,905,600	
UNITED STATES								
Unemployed	15,005,000	9.7	13,310,000	8.6	1,695,000	1.1	14,871,000	9.7
Labor Force	153,910,000		154,164,000		-254,000		153,512,000	

U.S. AND CONNECTICUT UNEMPLOYMENT RATES - Seasonally Adjusted 2008 - 2010



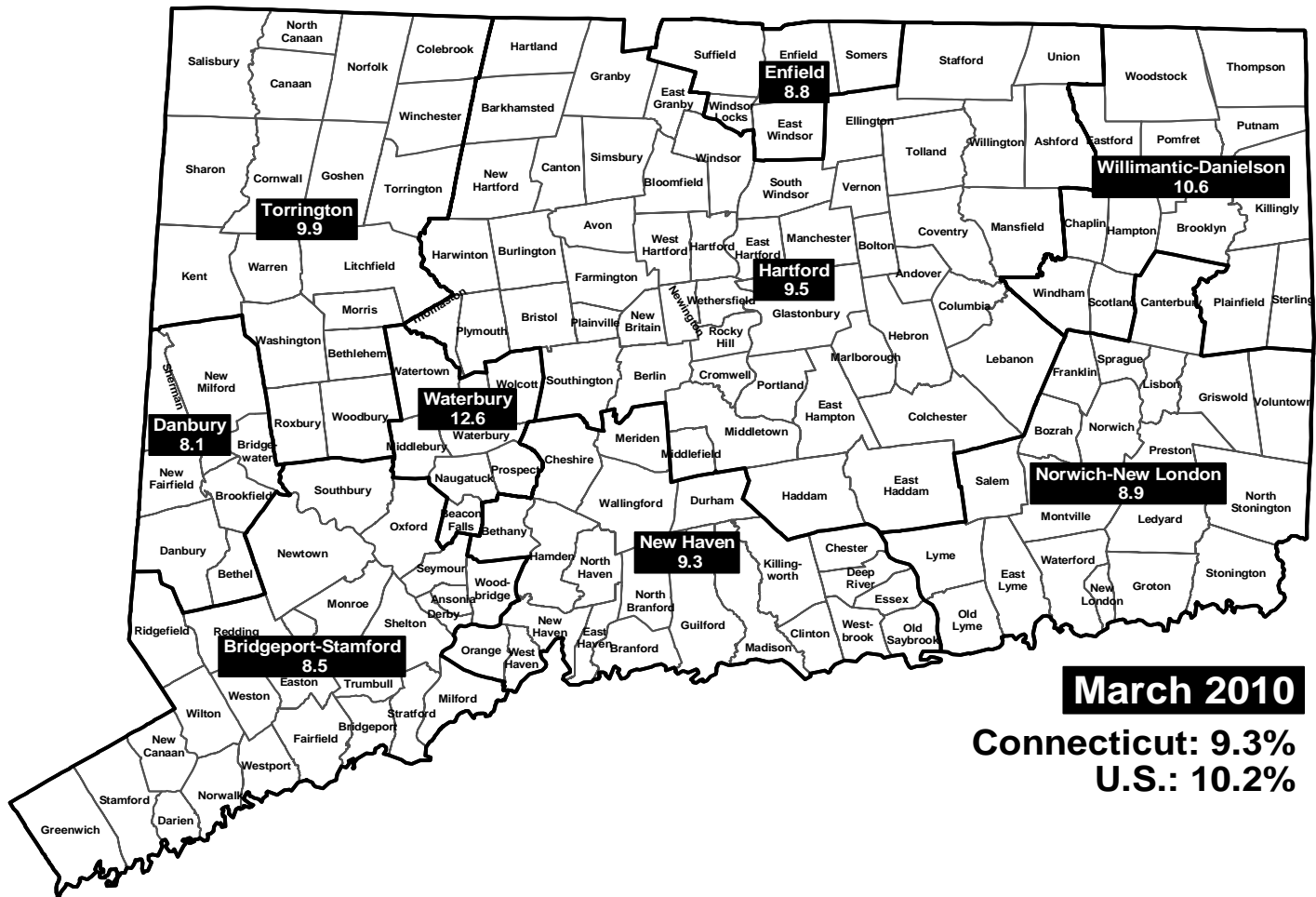
LABOR MARKET AREAS - Not Seasonally Adjusted

	March 2010		March 2009		Change		February 2010	
	Number	Rate	Number	Rate	Number	Points	Number	Rate
Bridgeport-Stamford	40,600	8.5	35,500	7.5	5,100	1.0	42,900	9.0
Danbury	7,300	8.1	6,400	7.0	900	1.1	7,700	8.5
Enfield	4,400	8.8	3,800	7.6	600	1.2	5,000	10.0
Hartford	56,900	9.5	47,900	8.0	9,000	1.5	60,000	10.0
New Haven	29,400	9.3	24,700	8.0	4,700	1.3	31,000	9.7
Norwich-New London	13,700	8.9	12,000	7.9	1,700	1.0	14,400	9.4
Torrington	5,400	9.9	4,600	8.5	800	1.4	5,700	10.5
Waterbury	12,800	12.6	11,000	10.9	1,800	1.7	13,700	13.4
Willimantic-Danielson	6,300	10.6	5,700	9.6	600	1.0	6,900	11.6
CONNECTICUT	175,300	9.3	150,300	8.0	25,000	1.3	185,800	9.8
UNITED STATES	15,678,000	10.2	13,895,000	9.0	1,783,000	1.2	15,991,000	10.4

UNEMPLOYMENT RATES

Not Seasonally Adjusted

LABOR MARKET AREAS



HOURS AND EARNINGS

CONNECTICUT Statewide - Not Seasonally Adjusted

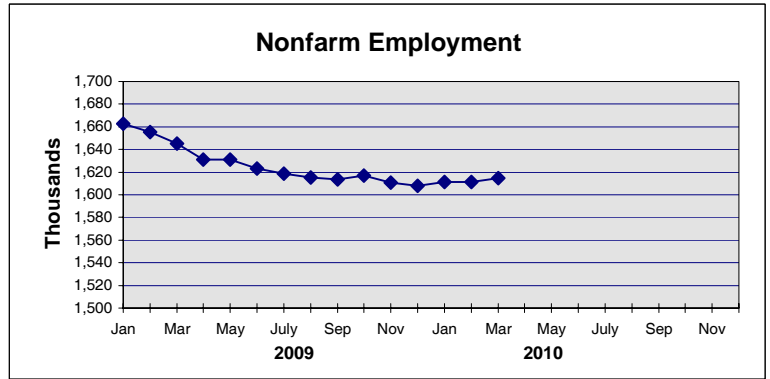
	Average Weekly Earnings				Average Weekly Hours				Average Hourly Earnings			
	Mar. 2010	Mar. 2009	Change over Yr.	Feb. 2010	Mar. 2010	Mar. 2009	Change over Yr.	Feb. 2010	Mar. 2010	Mar. 2009	Change over Yr.	Feb. 2010
Private Industry All Employees	\$920.04	\$937.72	-\$17.68	\$917.48	33.0	33.1	-0.1	32.5	\$27.88	\$28.33	-\$0.45	\$28.23
Manufacturing Production Workers	\$953.86	\$937.10	\$16.76	\$952.02	41.4	41.3	0.1	41.0	\$23.04	\$22.69	\$0.35	\$23.22

Hours and earnings are also developed for the state's major industry sectors and Labor Market Areas. They can be found on our website at www.ctdol.state.ct.us/lmi.

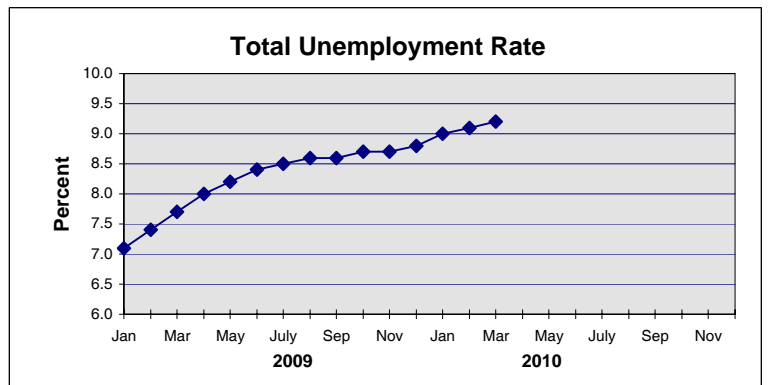
TRENDS

Seasonally Adjusted

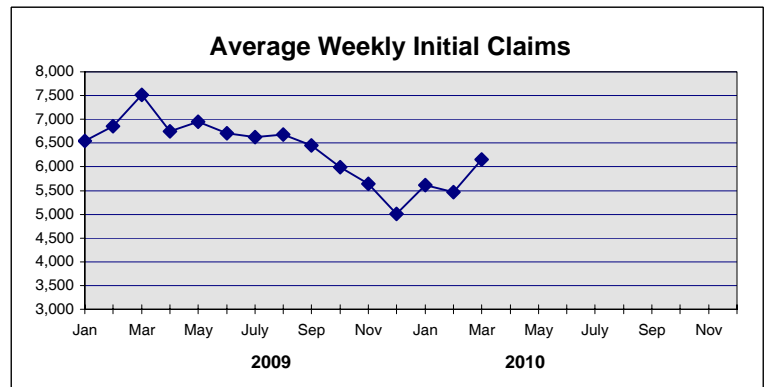
	Nonfarm Employment (000s)	Total Unemployment Rate
2009		
Jan	1,662.9	7.1
Feb	1,655.6	7.4
Mar	1,645.1	7.7
Apr	1,631.1	8.0
May	1,630.8	8.2
Jun	1,623.2	8.4
July	1,618.6	8.5
Aug	1,615.0	8.6
Sep	1,613.6	8.6
Oct	1,617.2	8.7
Nov	1,610.7	8.7
Dec	1,608.1	8.8



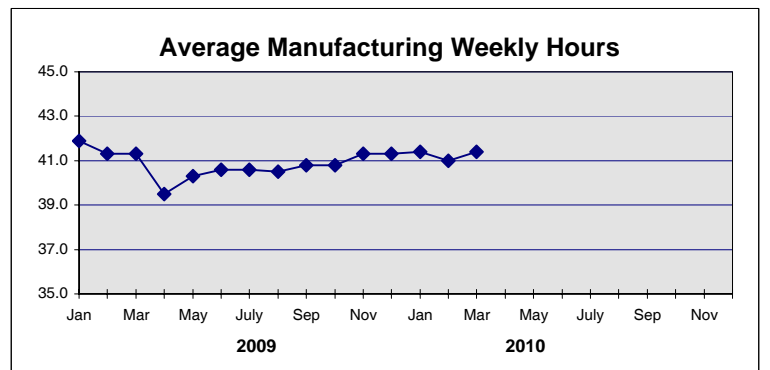
2010		
Jan	1,611.3	9.0
Feb	1,611.5	9.1
Mar	1,614.5	9.2
Apr		
May		
Jun		
July		
Aug		
Sep		
Oct		
Nov		
Dec		



	Avg Weekly Initial Claims	Avg Manufacturing Weekly Hours*
2009		
Jan	6,538	41.9
Feb	6,858	41.3
Mar	7,510	41.3
Apr	6,750	39.5
May	6,949	40.3
Jun	6,706	40.6
July	6,626	40.6
Aug	6,679	40.5
Sep	6,444	40.8
Oct	5,988	40.8
Nov	5,635	41.3
Dec	5,006	41.3



2010		
Jan	5,611	41.4
Feb	5,460	41.0
Mar	6,154	41.4
Apr		
May		
Jun		
July		
Aug		
Sep		
Oct		
Nov		
Dec		



* Not Seasonally Adjusted

** Labor-management dispute